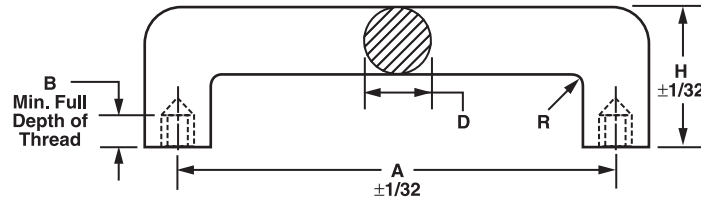


# Table of Contents

<b>PDF Catalog Files</b>	<b>Page</b>
<b>Warranty</b>	<b>1</b>
<b>EZ Order Instructions</b>	<b>2</b>
<b>FMR2002 Front-Mount Retainer/Standoff</b>	<b>7-8</b>
<b>Standoffs &amp; Spacers</b>	<b>9-91</b>
<b>Locking Fasteners</b>	<b>92-108</b>
<b>Self Locking Devices</b>	<b>109</b>
<b>FMR2002 Front-Mount Retainer Assembly</b>	<b>110-112</b>
<b>Screws</b>	<b>113-189</b>
<b>Retainers</b>	<b>190-197</b>
<b>Washers</b>	<b>198-243</b>
<b>Nuts &amp; Bushings</b>	<b>244-254</b>
<b>Miscellaneous Components</b>	<b>255-259</b>
<b>Handles</b>	<b>260-274</b>
<b>Material &amp; Technical Specs</b>	<b>275-287</b>

## ROUND HANDLES



**ORDER EXAMPLE:**

**8400 - 1.500 - 256 - SS - 12**

Basic Part Number	Length A between centers	Thread	Material: See chart	Finish: See page 277
-------------------	--------------------------	--------	---------------------	----------------------

If metric thread is required, add to part number.  
**EXAMPLE: 8400-1.500-M2-SS-12**

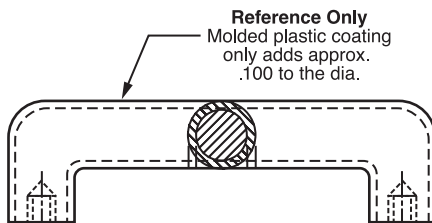
If a different thread depth B is required, add requirement to part number.  
**EXAMPLE: 8400-1.500-256-SS-12 (B = 256 x 3/8)**

Thread	B Min. Depth of Thread
2-56	3/16
4-40	1/4

Available Material (see page 275)	
A	Aluminum
B	Brass
C	Copper
S	Steel 12L14
SS	Stainless Steel, Type 303

Diameter	Height	Approx Radius	Basic Part Number	Length A $\pm 1/32$	Thread	Material	Finish
1/8	1/2	1/8	8400				
	3/4		8402				
	1		8404				
	1-1/4		8406				
	1-1/2		8408				
	2		8410				
5/32	3/4	5/32	8412				
	1		8100				
	1-1/4		8416				
	1-1/2		8418				
	2		8420				
3/16	3/4	3/16	8424				
	7/8		8426				
	1		8428				
	1-1/8		8430				

## FIRM GRIP MOLDED PLASTIC COATING



Recommended Colors	OTHER COLORS (6 Weeks Delivery)
Black BL	White W
Blue B	Yellow Y
Red R	Clear C
Green G	Orange O
	Brown BR
	Purple P

**ORDER EXAMPLE:**

**8400 - 4.00 - 256 - A - 1 - FG - BL**

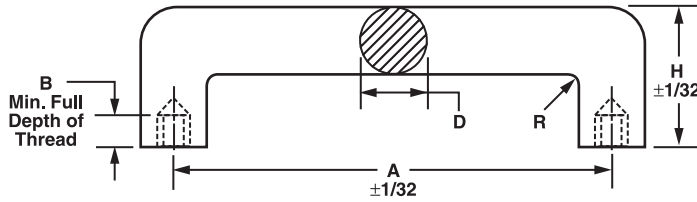
Basic Part Number	Length A between centers	Thread	Material: See chart	Finish: See page 277	Firm Grip: See note below	Color: See chart
-------------------	--------------------------	--------	---------------------	----------------------	---------------------------	------------------



# TECH TIP

**Firm grip handles available in ten different colors.**

## ROUND HANDLES



Thread	B Min. Depth of Thread
2-56	3/16
4-40	1/4
6-32	9/32
8-32	5/16
10-24	3/8
10-32	3/8
1/4-20	9/16
1/4-28	9/16

**ORDER EXAMPLE:**

**8432 - 1.500 - 632 - SS - 12**

Basic Part Number	Length A between centers	Thread	Material: See chart	Finish: See page 277
-------------------	--------------------------	--------	---------------------	----------------------

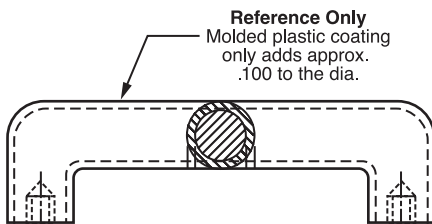
If metric thread is required, add to part number.  
**EXAMPLE: 8432-1.500-M3-SS-12**

If a different thread depth B is required, add requirement to part number.  
**EXAMPLE: 8432-1.500-6-32-SS-12 (B = 6-32 x 3/8)**

Available Material (see page 275)	
A	Aluminum
B	Brass
C	Copper
S	Steel 12L14
SS	Stainless Steel, Type 303

Diameter	Height	Approx Radius	Basic Part Number	Length A ±1/32	Thread	Material	Finish
3/16	1-1/4	3/16	8432				
	1-1/2		8434				
	2		8436				
1/4	1	1/4	8103				
	1-1/4		8104				
	1-1/2		8105				
	2		8106				
	2-1/2		8107				
	2-3/4		8108				
	3		8438				
	3-1/2		8440				
	4		8442				
4-1/4	8444						
5/16	1	5/16	8110				

## FIRM GRIP MOLDED PLASTIC COATING



Recommended Colors	OTHER COLORS (6 Weeks Delivery)
Black BL	White W
Blue B	Yellow Y
Red R	Clear C
Green G	Orange O
	Brown BR
	Purple P

**ORDER EXAMPLE:**

**8432 - 4.00 - 256 - A - 1 - FG - BL**

Basic Part Number	Length A between centers	Thread	Material: See chart	Finish: See page 277	Firm Grip: See note below	Color: See chart
-------------------	--------------------------	--------	---------------------	----------------------	---------------------------	------------------

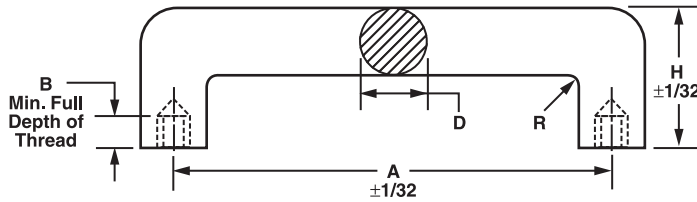


## TECH TIP

**ASM can supply the hardware for all of our handles.**

NOTE: Where "H" dimension is 1 or smaller, thread will be minimum depth possible or minimum of 3 full threads.

## ROUND HANDLES



Thread	B Min. Depth of Thread
2-56	3/16
4-40	1/4
6-32	9/32
8-32	5/16
10-24	3/8
10-32	3/8
1/4-20	9/16
1/4-28	9/16

**ORDER EXAMPLE:**

**8113 - 1.500 - 256 - SS - 12**

Basic Part Number	Length A between centers	Thread	Material: See chart	Finish: See page 277
-------------------	--------------------------	--------	---------------------	----------------------

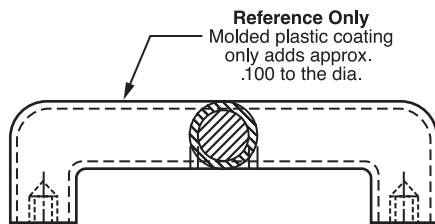
If metric thread is required, add to part number.  
**EXAMPLE: 8113-1.500-M3-SS-12**

If a different thread depth B is required, add requirement to part number.  
**EXAMPLE: 8113-1.500-632-SS-12 (B = 632 x 3/8)**

Available Material (see page 275)	
A	Aluminum
B	Brass
C	Copper
S	Steel 12L14
SS	Stainless Steel, Type 303

Diameter	Height	Approx Radius	Basic Part Number	Length A ±1/32	Thread	Material	Finish
5/16	1-1/4	5/16	8113				
	1-5/16		8109				
	1-3/8		8114				
	1-1/2		8112				
	1-3/4		8115				
	1-7/8		8118				
	2		8116				
	2-1/4		8117				
	3		8122				
	3-1/2		8119				
	4		8120				
5	8446						
3/8	1-9/32	3/8	8121				
	1-5/16		8124				
	1-1/2		8127				
	1-3/4		8130				

## FIRM GRIP MOLDED PLASTIC COATING



Recommended Colors		OTHER COLORS (6 Weeks Delivery)
Black	BL	White W
Blue	B	Yellow Y
Red	R	Clear C
Green	G	Orange O
		Brown BR
		Purple P

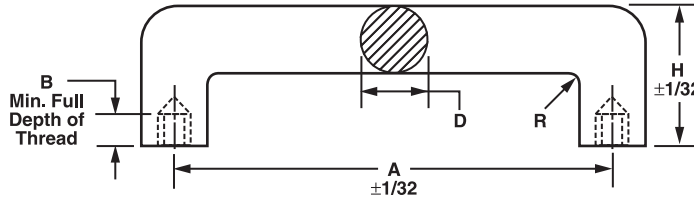
**ORDER EXAMPLE:**

**8113 - 4.00 - 256 - A - 1 - FG - BL**

Basic Part Number	Length A between centers	Thread	Material: See chart	Finish: See page 277	Firm Grip: See note below	Color: See chart
-------------------	--------------------------	--------	---------------------	----------------------	---------------------------	------------------

**NOTE:** Where "H" dimension is 1 or smaller, thread will be minimum depth possible or minimum of 3 full threads.

## ROUND HANDLES



Thread	B Min. Depth of Thread
2-56	3/16
4-40	1/4
6-32	9/32
8-32	5/16
10-24	3/8
10-32	3/8
1/4-20	9/16
1/4-28	9/16
5/16-18	9/16

**ORDER EXAMPLE:**

**8133 - 1.500 - 632 - SS - 12**

Basic Part Number	Length A between centers	Thread	Material: See chart	Finish: See page 277
-------------------	--------------------------	--------	---------------------	----------------------

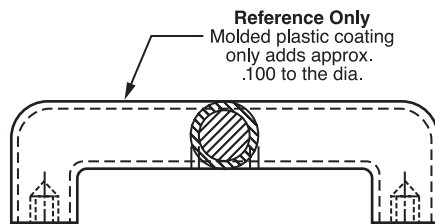
If metric thread is required, add to part number.  
**EXAMPLE: 8133-1.500-M3-SS-12**

If a different thread depth B is required, add requirement to part number.  
**EXAMPLE: 8133-1.500-632-SS-12 (B = 6-32 x 3/8)**

Available Material (see page 275)	
A	Aluminum
B	Brass
C	Copper
S	Steel 12L14
SS	Stainless Steel, Type 303

Diameter	Height	Approx Radius	Basic Part Number	Length A ±1/32	Thread	Material	Finish
3/8	1-7/8	3/8	8133				
	2		8123				
	2-3/8		8125				
	2-1/2		8139				
	3		8126				
	4		8128				
1/2	1-5/8	1/2	8132				
	1-3/4		8134				
	1-7/8		8135				
	2		8136				
	2-3/8		8137				
	2-1/2		8140				
	3		8138				
	4		8142				
	5		8141				

## FIRM GRIP MOLDED PLASTIC COATING



Recommended Colors	OTHER COLORS (6 Weeks Delivery)
Black BL	White W
Blue B	Yellow Y
Red R	Clear C
Green G	Orange O
	Brown BR
	Purple P

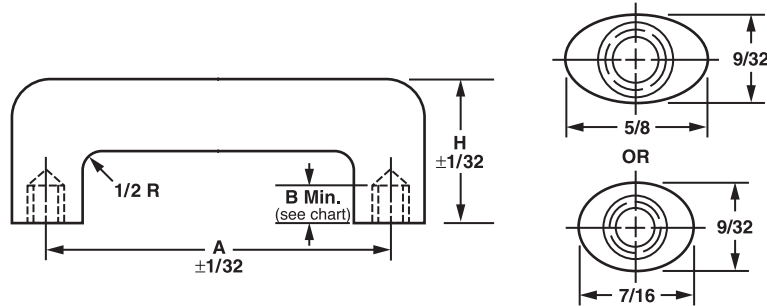
**ORDER EXAMPLE:**

**8133 - 4.00 - 256 - A - 1 - FG - BL**

Basic Part Number	Length A between centers	Thread	Material: See chart	Finish: See page 277	Firm Grip: See note below	Color: See chart
-------------------	--------------------------	--------	---------------------	----------------------	---------------------------	------------------

NOTE: Where "H" dimension is 1 or smaller, thread will be minimum depth possible or minimum of 3 full threads.

## OVAL HANDLES



Recommended Length A $\pm 1/32$	
2.000	4.562
2.250	5.000
2.500	6.000
3.000	6.437
3.500	7.000
4.000	8.000
4.250	9.000
4.500	12.000

**ORDER EXAMPLE:**

**9300 - 2.00 - 10-32 - SS - 12**

Basic Part Number	Length A between centers	Thread	Material: See chart	Finish: See page 277
-------------------	--------------------------	--------	---------------------	----------------------

If metric thread is required, add to part number.  
**EXAMPLE: 9300-1.500-M3-SS-12**

If a different thread depth B is required, add requirement to part number.  
**EXAMPLE: 9300-1.500-632-SS-12 (B = 6-32 x 3/8)**

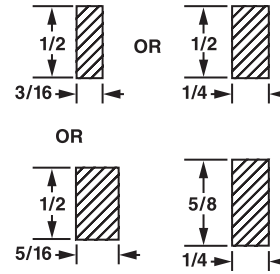
Available Material (see page 275)	
A	Aluminum
SS	Stainless Steel

Thread	B Min. Depth of Thread
2-56	3/16
4-40	1/4
6-32	9/32
8-32	5/16
10-32	3/8

Oval	Height	Basic Part Number	See chart for recommended Length A $\pm 1/32$	Thread	Material	Finish
7/16 x 9/32	1	9300				
	1-9/32	9302				
	1-1/2	9304				
	1-3/4	9306				
	2	9308				
5/8 x 9/32	1	9310				
	1-9/32	9312				
	1-1/2	9314				
	1-3/4	9316				
	2	9318				
	2-1/4	9320				
	2-1/2	9322				
	3	9324				
4	9326					

# RECTANGLE HANDLES



Recommended Length "A" ±1/32
2.000
3.000
4.000
5.000
6.000
7.000
8.000
9.000
10.000

Available Material (see page 275)	
A	Aluminum
B	Brass
S	Steel
SS	Stainless Steel

**ORDER EXAMPLE:**

**9400 - 2.00 - 440 - B - 7**

Basic Part Number	Length A between centers	Thread	Material: See chart	Finish: See page 277
-------------------	--------------------------	--------	---------------------	----------------------

If metric thread is required, add to part number.  
**EXAMPLE: 9400-1.500-M3-SS-12**

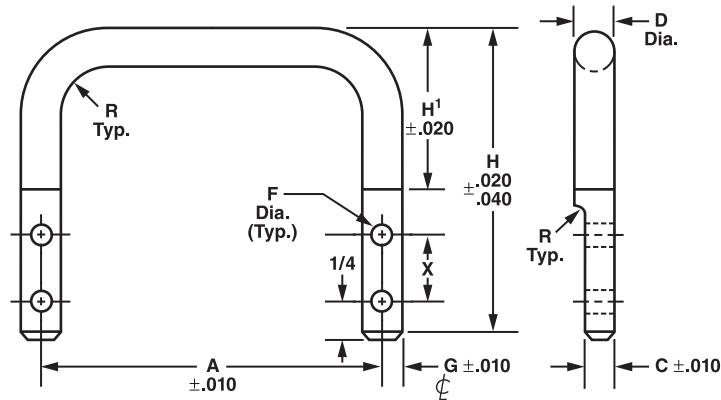
If a different thread depth B is required, add requirement to part number.  
**EXAMPLE: 9400-1.500-632-SS-12 (B = 6-32 x 3/8)**

Thread	B Min. Depth of Thread
2-56	3/16
4-40	1/4
6-32	9/32
8-32	5/16
10-32	3/8

Rectangle	Height	Basic Part Number	See above for Recommended Length "A" ±1/32	Thread	Material	Finish
1/2 x 3/16	1-1/2	9400				
	1-3/4	9402				
	2	9405				
1/2 x 1/4	1-1/2	Δ 9407				
	1-3/4	Δ 9409				
	2	Δ 9411				
1/2 x 5/16	1-1/2	Δ 9413				
	1-3/4	Δ 9415				
	2	Δ 9416				
5/8 x 1/4	1	Δ 9418				
	1-1/2	Δ 9423				
	1-3/4	Δ 9425				
	2	Δ 9426				

Δ Not available in Brass

## SIDE MOUNTED ROUND HANDLE



### ORDER EXAMPLE:

**114032 - 1.000 - A - 22**

Basic Part Number	Length A between centers	Material: See chart	Finish: See page 277
-------------------------	--------------------------------	------------------------	----------------------------

Any one dimension or tolerance may be changed by adding to part number.  
 EXAMPLE: 114032-1.000-A-22MOD (X=.625)

#### Available Material (see page 275)

A	Aluminum
B	Brass
S	Steel
SS	Stainless Steel

Basic Part Number	D Diameter	Radius	H + .020 - .040	H <sup>1</sup> ± .020	F ± .005	G ± .010	C ± .010	X ± .010	A ± .010	Material	Finish
114032	5/16	5/16	2.56	1.40	.204	.156	.219	.41			
114034			3.06	1.90							
114036			3.56	2.40							
114038	3/8	3/8	2.56	1.40		.187	.282				
114040			3.06	1.90							
114042			3.56	2.40							
114044	1/2	3/8	2.56	1.40		.250	.407				
114046			3.06	1.90							
114048			3.56	2.40							



## TECH TIP

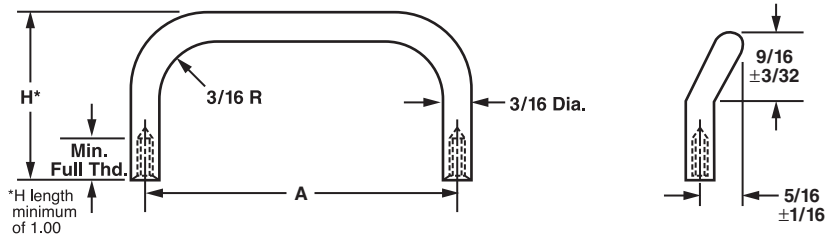
Not sure whether the part you selected will fit in your application? Download a 3D CAD model of the part (in the format of your choice) from [www accuratescrew.com](http://www accuratescrew.com) and find out!



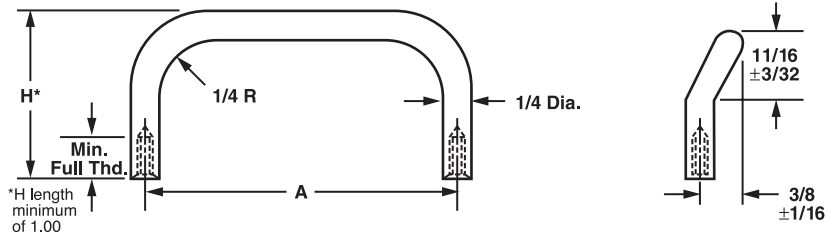
# OFFSET INTERNAL THREAD HANDLES

See pages 260-263 for complete information.

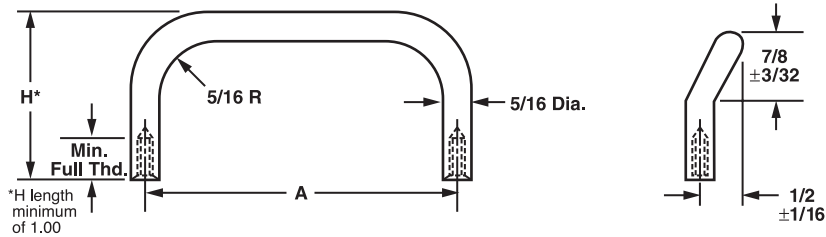
## 3/16 Round



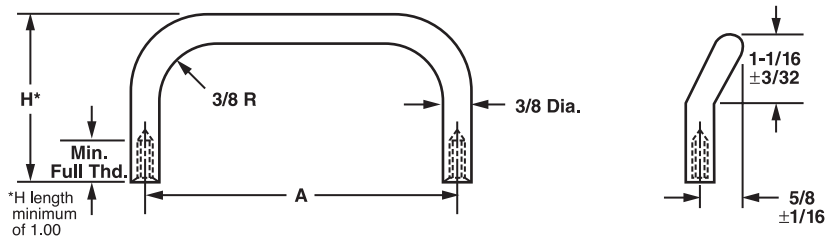
## 1/4 Round



## 5/16 Round



## 3/8 Round



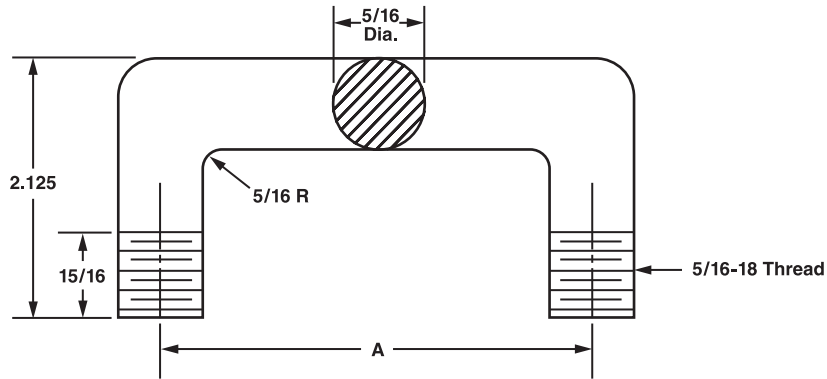
**ORDER EXAMPLE:**

**8428 - 2.00 - 440 - SS - F - 1**

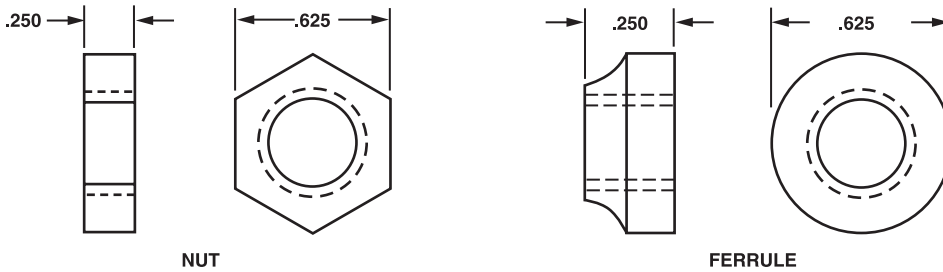
Basic Part Number	Length A between centers	Thread	Material: See chart
		Offset	Finish: See page 277

NOTE: H-length minimum of 1.00

# ROUND EXTERNAL THREADED HANDLES



Threaded ferrule and nut supplied with above handles.



Available Material (see page 275)	
A	Aluminum
B	Brass
C	Copper
S	Steel
SS	Stainless Steel

**ORDER EXAMPLE:**

**9100 - 3.000 - SS - 12**

Basic Part Number	Fill in required length	Material: See chart	Finish: See page 277
-------------------	-------------------------	---------------------	----------------------

L = min. 2.00

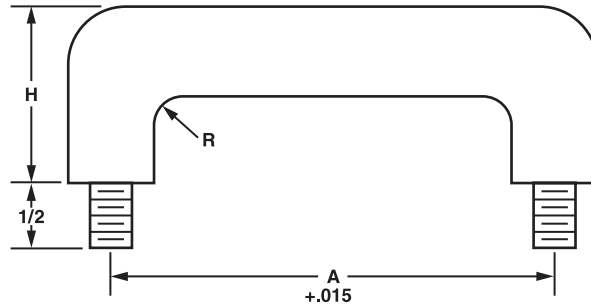
! TECH TIP

We can bend our handles up to 1/2" OD.

## ROUND EXTERNAL THREADED HANDLES WITH SHOULDERS

Available Material (see page 275)	
A	Aluminum
B	Brass
C	Copper
S	Steel
SS	Stainless Steel

Dia.	Recommended Thread
3/16	4-40 or 6-32
1/4	8-32 or 10-32
5/16	10-32 or 1/4-20
3/8	10-32, 1/4-20, or 5/16-18
1/2	10-32, 1/4-20, 5/16-18 or 3/8-24



**ORDER EXAMPLE:**

**9200 - 2.00 - 440 - SS - 12**

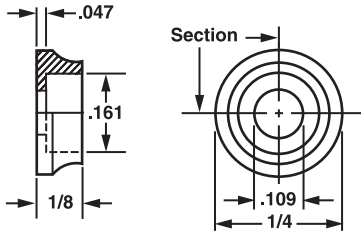
Basic Part Number      Length "A" minimum center-to-center "L" 2.00      Thread      Material: See chart      Finish: See page 277

Part No.	Diameter	Height	Approx. Radius	Length A ± .015	Thread	Material	Finish
9200	3/16	1	3/16				
9202		1-1/2					
9204		2					
9206	1/4	1	1/4				
9208		1-1/2					
9210		2					
9212	5/16	1-13/16	5/16				
9214		2					
9216		2-1/4					
9218	3/8	2	3/8				
9220		2-1/2					
9222		3					
9224	1/2	2-1/2	1/2				
9226		3					
9228		3-1/2					
9230		4					

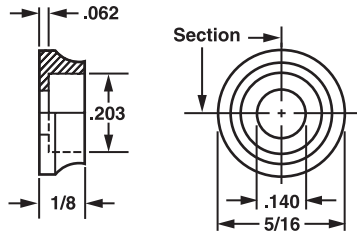
\*Minimum center-to-center "L" 2.00  
 Nuts and washers not supplied.

## FERRULES

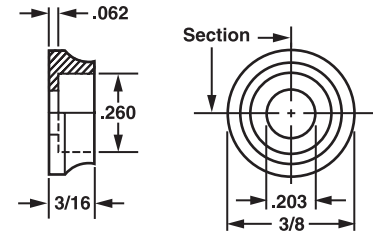
**For 5/32" Diameter Handles**  
 For 2-56 Thread  
 Part Number **8200**



**For 3/16" Diameter Handles**  
 For 4-40 Thread  
 Part Number **8201**

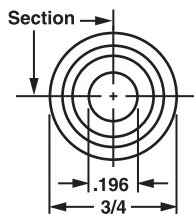
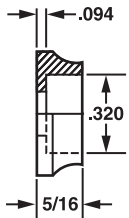


**For 1/4" Diameter Handles**  
 For 10-32 Thread  
 Part Number **8204**

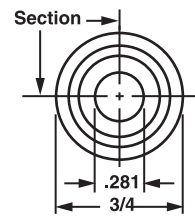


**For 5/16" Diameter Handles**

For 8-32 Thread  
 Part Number **8202**

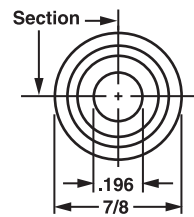
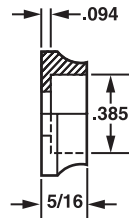


For 1/4-20 Thread  
 Part Number **8202A**

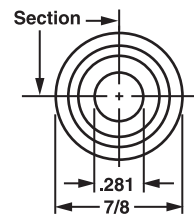


**For 3/8" Diameter Handles**

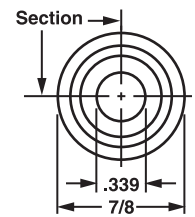
For 10-32 Thread  
 Part Number **8206**



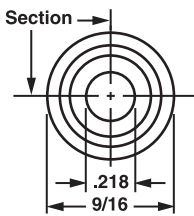
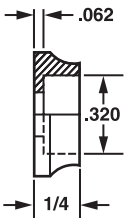
For 1/4-20 Thread  
 Part Number **8206A**



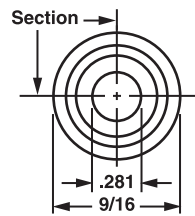
For 5/16-18 Thread  
 Part Number **8206B**



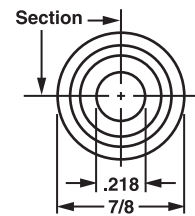
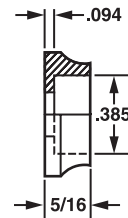
For 10-32 Thread  
 Part Number **8208**



For 1/4-20 Thread  
 Part Number **8208A**

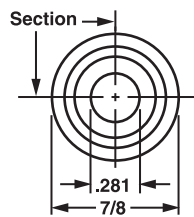
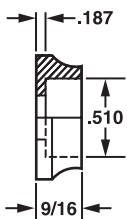


For 10-32 Thread  
 Part Number **8210**

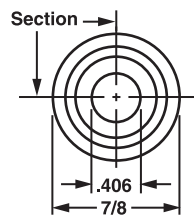


**For 1/2" Diameter Handles**

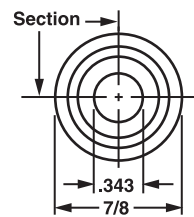
For 1/4-20 Thread  
 Part Number **8209**



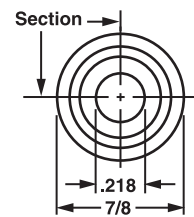
For 3/8-24 Thread  
 Part Number **8209A**



For 5/16-18 Thread  
 Part Number **8209B**



For 10-32 Thread  
 Part Number **8209C**



### ORDER EXAMPLE:

**8200 - SS - 12**

Basic Part Number

Material: See chart

Finish: See page 277

#### Available Material (see page 275)

A	Aluminum
B	Brass
C	Copper
SS	Stainless Steel

## FOLDING HANDLES

Available Material (see page 275)	
A	Aluminum
B	Brass*
C	Copper*
S	Steel*
SS	Stainless Steel

Indicate 90° or 180° in Part Number  
 90° Folding (Two Position)  
 180° Folding (Three Position)

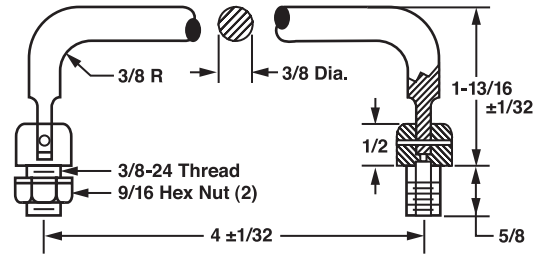
\*Round only

### Part Number 9500

**ORDER EXAMPLE:**

**9500 - 90° - SS - 12**

Basic Part Number	90° Folding 2-position	Material: See chart	Finish: See page 277
-------------------	------------------------	---------------------	----------------------

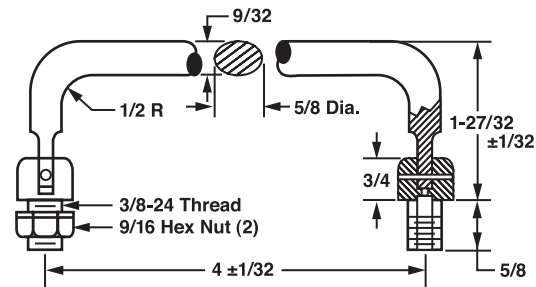


### Part Number 9504

**ORDER EXAMPLE:**

**9504 - 180° - SS - 12**

Basic Part Number	180° Folding 3-position	Material: See chart	Finish: See page 277
-------------------	-------------------------	---------------------	----------------------

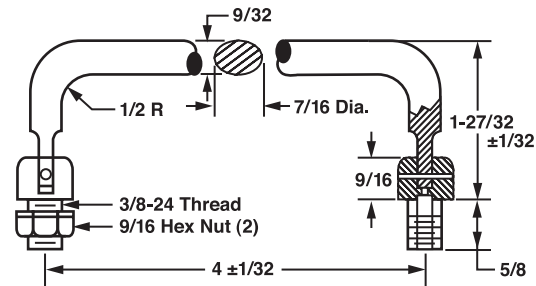


### Part Number 9506

**ORDER EXAMPLE:**

**9506 - 90° - SS - 12**

Basic Part Number	90° Folding 2-position	Material: See chart	Finish: See page 277
-------------------	------------------------	---------------------	----------------------

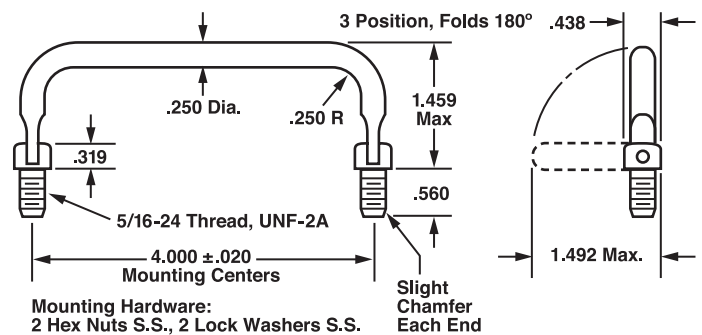


### Part Number 9501

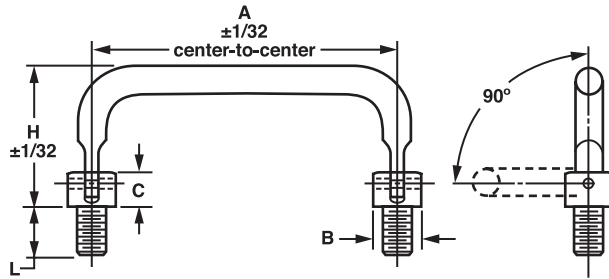
**ORDER EXAMPLE:**

**9501 - 180° - SS - 12**

Basic Part Number	180° Folding 3-position	Material: See chart	Finish: See page 277
-------------------	-------------------------	---------------------	----------------------



## FOLDING - EXTERNAL THREAD ROUND 90° 2-Position Spring Loaded Detents



Available Material (see page 275)	
A	Aluminum
B	Brass
C	Copper
S	Steel
SS	Stainless Steel

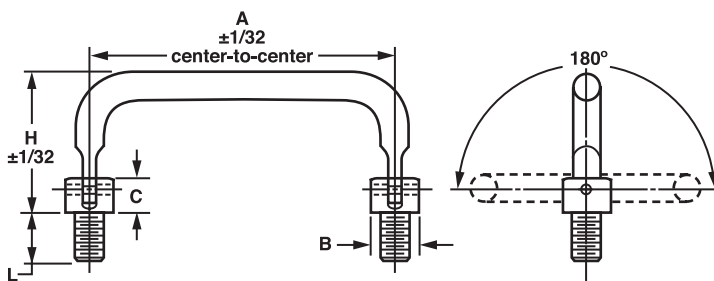
Diameter	Available Thread	L	C	B
1/4 OD	1/4-28	9/16	5/16	7/16
5/16 OD	5/16-24	5/8	3/8	9/16
3/8 OD	3/8-24	5/8	1/2	5/8

**ORDER EXAMPLE:**  
**16684 - 3.000 - A - 3**

Basic Part Number: 16684  
 A: 3.000 (Center-to-Center)  
 Material: A (See chart)  
 Finish: 3 (See page 277)

Basic Part Number	Diameter	H Height	A See Note Below	Material	Finish
16684	1/4	1.460			
16686	5/16	1.530			
16688		1.850			
16690	3/8	1.530			
16692		1.625			
16694		1.850			
16696		2.375			

## 180° 3-Position Spring Loaded Detents



Available Material (see page 275)	
A	Aluminum
B	Brass
SS	Stainless Steel

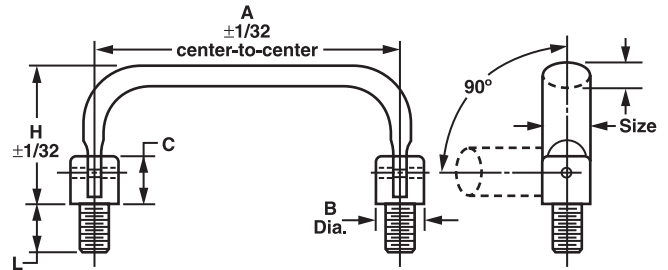
Diameter	Available Thread	L	C	B
1/4 OD	1/4-28	9/16	5/16	7/16
5/16 OD	5/16-24	5/8	3/8	9/16
3/8 OD	3/8-24	5/8	1/2	5/8

**ORDER EXAMPLE:**  
**16698 - 3.000 - A - 3**

Basic Part Number: 16698  
 A: 3.000 (Center-to-Center)  
 Material: A (See chart)  
 Finish: 3 (See page 277)

Basic Part Number	Diameter	H Height	A See Note Below	Material	Finish
16698	1/4	1.460			
16700	5/16	1.530			
16702		1.850			
16704	3/8	1.530			
16706		1.625			
16708		1.850			
16710		2.375			

## FOLDING - EXTERNAL THREAD OVAL 90° 2-Position Spring Loaded Detents



Available Material (see page 275)	
A	Aluminum
SS	Stainless Steel

Oval Size	Available Thread	L	C	B
7/16 x 9/32	5/16-24	5/8	9/16	7/16
5/8 x 9/32	3/8-24		3/4	5/8

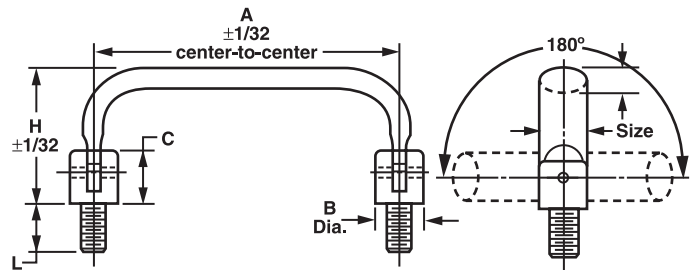
**ORDER EXAMPLE:**

**16712 - 3.000 - A - 3**

Basic Part Number: 16712  
 A: 3.000 (Center-to-Center)  
 Material: A (See chart)  
 Finish: 3 (See page 277)

Basic Part Number	Size	H Height	A See Note Below	Material	Finish
16712	7/16 x 9/32	1.695			
16714		1.791			
16716		1.843			
16718		2.125			
16728	5/8 x 9/32	1.695			
16730		1.791			
16732		1.843			
16734		2.125			

## 180° 3-Position Spring Loaded Detents



Available Material (see page 275)	
A	Aluminum
SS	Stainless Steel

Oval Size	Available Thread	L	C	B
7/16 x 9/32	5/16-24	5/8	9/16	7/16
5/8 x 9/32	3/8-24		3/4	5/8

**ORDER EXAMPLE:**

**16736 - 3.000 - A - 3**

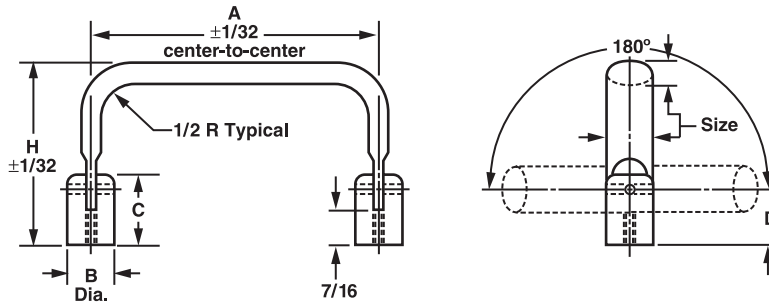
Basic Part Number: 16736  
 A: 3.000 (Center-to-Center)  
 Material: A (See chart)  
 Finish: 3 (See page 277)

Basic Part Number	Size	H Height	A See Note Below	Material	Finish
16736	7/16 x 9/32	1.695			
16738		1.791			
16740		1.843			
16742		2.125			
16752	5/8 x 9/32	1.695			
16754		1.791			
16756		1.843			
16758		2.125			

NOTE: Nuts and washers are included.  
 The "A" center-to-center dimension must be 2.500

## FOLDING - INTERNAL THREAD OVAL

### 180° Infinite Position



Available Material (see page 275)	
A	Aluminum
SS	Stainless Steel

Oval Size	Available Thread	B	C	D
7/16 X 9/32	8-32	7/16	7/8	21/32
5/8 X 9/32	10-32	5/8	1-1/16	3/4

Basic Part Number	Oval Size	H Height	Basic Part Number	Size	H Height
16768	7/16 X 9/32	2.000			
16770		2.500			
16772		3.000			
16780	5/8 X 9/32	2.000			
16782		2.500			
16784		3.000			

**ORDER EXAMPLE:**

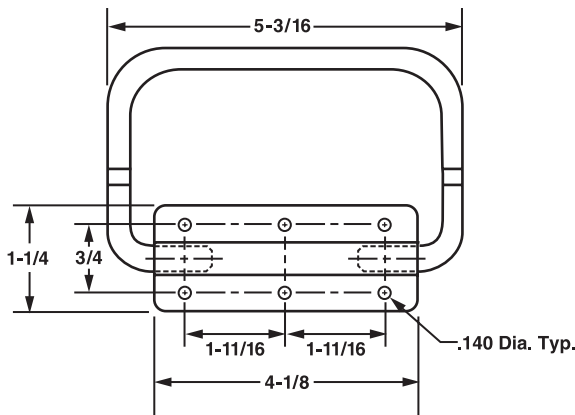
**16768 - 3.000 - A - 3**

Basic Part Number      A Center-to-Center\*      Material: See chart      Finish: See page 277

\*NOTE: The "A" center-to-center dimension must be 2.500

## FOLDING - WITH MOUNTING PLATE

### Rectangular 180° Free Fall



Available Material (see page 275)	
Aluminum Alloy	

**ORDER EXAMPLE:**

**16792**

Basic Part Number

Basic Part Number	Mounting Plate	Handle Finish	Plate Finish
16792	With Holes	Black Epoxy	Black Anodized
16794		Gray Epoxy	Clear Anodized
16796	Without Holes for Spot Welding	Black Epoxy	Black Anodized
16798		Gray Epoxy	Clear Anodized