



ESSENTRA

COMPONENTS

RESTORE ORDER WITH CABLE MANAGEMENT SOLUTIONS

Manage, organise and protect complex cabling with easy-to-install solutions, suited to a range of demanding and varied environments.



www.essentracomponents.co.uk

CABLE MANAGEMENT

CONDUIT AND ACCESSORIES



278

GROMMETS, STRAIN RELIEF
AND BLANKING PLUGS



288

CABLE GLANDS AND ACCESSORIES



315

CABLE ENTRY SYSTEMS



327

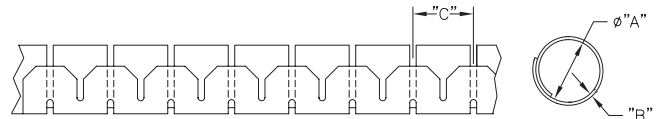
CONDUIT AND ACCESSORIES

Rapid Cable Wrap

SR 1723

Nylon or Polypropylene

- Crush resistant
- Tough durable protection for cable looms
- Protects against damage and wear without restricting flexibility
- Easy to install with special tool
- For clip see page 286



Part Number	Dimensions (mm)				Material	Colour	Installation Tool Part Number	Std Pack Qty
	"A"	Max. Bundle Ø	"B"	"C"				
SHR-05-6NB	5	6	0.8	10.0	Nylon, RMS-85	Black	CAT-05-PP	100m
SHR-08-6NB	8	10	0.8	10.0	Nylon, RMS-85	Black	CAT-08-PP	100m
SHR-15-6NB	15	16	0.8	14.0	Nylon, RMS-85	Black	CAT-15-PP	50m
SHR-20-6NB	20	23	0.9	17.0	Nylon, RMS-85	Black	CAT-20-PP	30m
SHR-25-6NB	25	25	1.0	20.0	Nylon, RMS-85	Black	CAT-25-PP	20m
SHR-32-6NB	32	32	1.3	24.9	Nylon, RMS-85	Black	CAT-32-PP	15m
SHR-05-6VOB	5	6	0.8	10.0	UL94-V0 Nylon, RMS-95	Black	CAT-05-PP	100m
SHR-08-6VOB	8	10	0.8	10.0	UL94-V0 Nylon, RMS-95	Black	CAT-08-PP	100m
SHR-15-6VOB	15	16	0.8	14.0	UL94-V0 Nylon, RMS-95	Black	CAT-15-PP	50m
SHR-20-6VOB	20	23	0.9	17.0	UL94-V0 Nylon, RMS-95	Black	CAT-20-PP	30m
SHR-25-6VOB	25	25	1.0	20.0	UL94-V0 Nylon, RMS-95	Black	CAT-25-PP	20m
SHR-32-6VOB	32	32	1.3	24.9	UL94-V0 Nylon, RMS-95	Black	CAT-32-PP	15m
SHR-05-PPB	5	6	0.8	10.0	Polypropylene, RMS-94	Black	CAT-05-PP	100m
SHR-08-PPB	8	10	0.8	10.0	Polypropylene, RMS-94	Black	CAT-08-PP	100m
SHR-15-PPB	15	16	0.8	14.0	Polypropylene, RMS-94	Black	CAT-15-PP	50m
SHR-20-PPB	20	23	0.9	17.0	Polypropylene, RMS-94	Black	CAT-20-PP	30m
SHR-25-PPB	25	25	1.0	20.0	Polypropylene, RMS-94	Black	CAT-25-PP	20m
SHR-32-PPB	32	32	1.3	24.9	Polypropylene, RMS-94	Black	CAT-32-PP	15m
SHR-08-PPW	8	10	0.8	10.0	Polypropylene, RMS-94	White	CAT-08-PP	100m
SHR-15-PPW	15	16	0.8	14.0	Polypropylene, RMS-94	White	CAT-15-PP	50m
SHR-20-PPW	20	23	0.9	17.0	Polypropylene, RMS-94	White	CAT-20-PP	30m
SHR-25-PPW	25	25	1.0	20.0	Polypropylene, RMS-94	White	CAT-25-PP	20m
SHR-32-PPW	32	32	1.3	24.9	Polypropylene, RMS-94	White	CAT-32-PP	15m
SHR-15-PPS9022	15	16	0.8	14.0	Polypropylene, RMS-94	Silver	CAT-15-PP	50m
SHR-20-PPS9022	20	23	0.9	17.0	Polypropylene, RMS-94	Silver	CAT-20-PP	30m
SHR-25-PPS9022	25	25	1.0	20.0	Polypropylene, RMS-94	Silver	CAT-25-PP	20m
SHR-32-PPS-9022	32	32	1.3	24.9	Polypropylene, RMS-94	Silver	CAT-32-PP	15m

Installation Tool

Part Number	"A" (mm)	"B" Max Bundle Ø (mm)	To Be Used With	Colour	Material	Std Pack Qty
CAT-05-PP-BL	53	6.0	SHR-05-YYY*	Blue	Polypropylene, RMS-150	1
CAT-08-PP	71	9.5	SHR-08-YYY*	Orange/White	Polypropylene, RMS-268 & Polyacetal, RMS-267	1
CAT-15-PP	81	16.0	SHR-15-YYY*	Orange/White	Polypropylene, RMS-268 & Polyacetal, RMS-267	1
CAT-20-PP	100	20.0	SHR-20-YYY*	Orange/White	Polypropylene, RMS-268 & Polyacetal, RMS-267	1
CAT-25-PP	113	24.5	SHR-25-YYY*	Orange/White	Polypropylene, RMS-268 & Polyacetal, RMS-267	1
CAT-32-PP	144	31.0	SHR-32-YYY*	Orange/White	Polypropylene, RMS-268 & Polyacetal, RMS-267	1

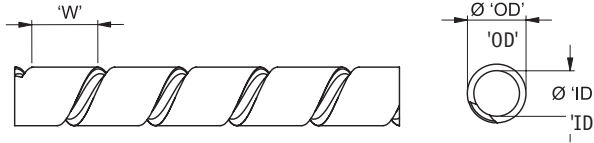
Tool available in bulk packages of 100/box. To order add -BU to the end of the part no.

* YYY = SHR Material

Harness Wrap

HW

Natural/Black PE, RMS-409



Product Number		Dimensions (mm)					Std Pack Qty
Natural	Black	'OD' Ø	'ID' Ø	Wall Thickness	Bundle Capacity	'W'	
HW-3.5-5-PE	HW-3.5-5-PE-BK	3.5	2.3	0.6	2 - 15	5	50
HW-5-7-PE	HW-5-7-PE-BK	5.0	3.7	0.65	4 - 20	7	25
HW-8-10-PE	HW-8-10-PE-BK	8.0	6.5	0.75	7 - 40	10	25
HW-10-12-PE	HW-10-12-PE-BK	10.0	8.2	0.9	12 - 50	12	25
HW-12-14-PE	HW-12-14-PE-BK	12.0	10.0	1.0	13 - 70	14	25
HW-14-16-PE	HW-14-16-PE-BK	14.0	12.0	1.0	15 - 80	16	20
HW-20-22-PE	HW-20-22-PE-BK	20.0	17.6	1.2	20 - 120	22	25
HW-25-27-PE	HW-25-27-PE-BK	25.0	22.2	1.4	25 - 150	27	20

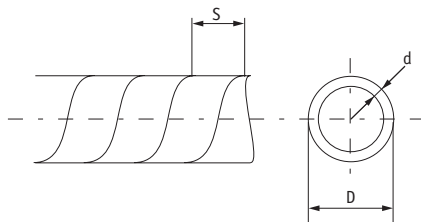
All dimensions apply to extruded tubing before cutting.

Spiral Wrap

SR 1794

Black PE

- Lightweight protective wrap
- Provides cost-effective hose and cable protection

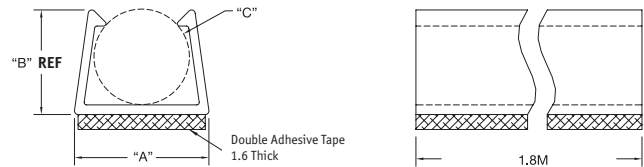
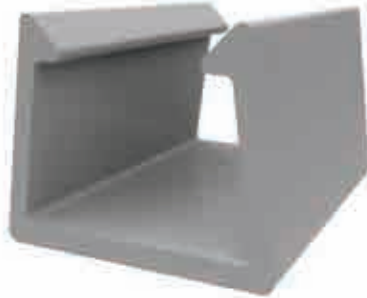


Part Number	Dimensions (mm)			Cable Bundle Dia (mm)	Std Pack Qty
	D	d	S		
SBX-03-E	3.0	0.75	5.0	2-5	10m
SBX-06-E	6.0	1.0	7.0	5-8	10m
SBX-08-E	8.0	1.0	11.0	7-10	10m
SBX-10-E	10.0	1.0	12.0	9-12	10m
SBX-12-E	12.0	1.5	14.0	11-14	10m
SBX-15-E	15.0	1.5	15.0	13-17	10m
SBX-19-E	19.0	2.0	18.0	16-22	10m
SBX-24-E	24.0	2.0	20.0	20-30	10m

Single Cable Duct on Adhesive Base

SCD

Beige, RMS-409, Adhesive, RMS-15



Product Number	Dimensions (mm)			Cable Recommendations		Std Pack Qty
	"A"	"B" Ref	"C" Holding Ø	COAX	COMPUTER	
SCD-1521	7.6	6.4	4 - 5.5	RG58	-	1,83m in ten 1.8m long pieces
SCD-2228	9.1	6.6	4 - 7.1	RG59,62,6	9 Line	1,83m in ten 1.8m long pieces

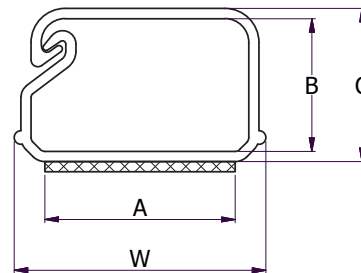
Locking Duct on Adhesive Base

SRL

White, UL94-V0 PVC



- Adhesive base for fast easy installation
- When lid is shut the cables are locked into place
- Lightweight and aesthetically pleasing
- One pack contains six 1.8m lengths



Part Number	Dimensions (mm)				Length (m)	Std Pack Qty
	A	B	W	C Ref.		
SRL1-3-WH6A	15.9	10.2	20.7	12.3	1.8	1
SRL1-5-WH6A	19.1	14.7	25.1	8.5	1.8	1
SRL1-10-WH6A	28.6	20.8	38.3	24.1	1.8	1

Richflex Flexible Channel

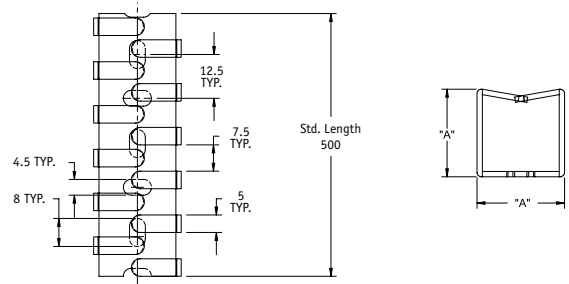
RX

Grey, Polypropylene, RMS-177 Adhesive Back, RMS-93

- 1 piece = 0.5m



Product Number	"A" (mm)	Internal Section mm ²	Mounting Method	Std Pack Qty (pieces)
RX1313-0	12.5	110	Screw	112
RX1313-4	12.5	110	Adhesive	112
RX1616-0	16	185	Screw	84
RX1616-4	16	185	Adhesive	84
RX2020-0	20	320	Screw	112
RX2020-4	20	320	Adhesive	112
RX2525-0	25	500	Screw	70
RX2525-4	25	500	Adhesive	70
RX3030-0	30	720	Screw	50
RX3030-4	30	720	Adhesive	50
RX4040-0	40	1320	Screw	50
RX4040-4	40	1320	Adhesive	50
RX5050-0	50	2040	Screw	32
RX5050-4	50	2040	Adhesive	32

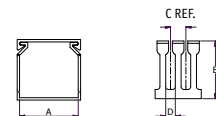


Slotted Wire Duct

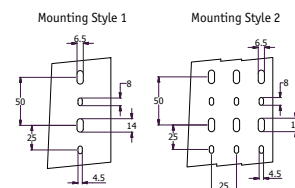
SRWD

Grey PVC

- Lid supplied with base
- Fingers are scored for easy break off
- Used for general purpose control panel wiring and to route and protect wiring in communication cupboards
- Holds breakout wires whilst providing flexibility for adding or removing wires
- 1 piece = 2 metres



Part Number	Dimensions (mm)				Mounting Style	Std Pack Qty
	A	B	C	D		
SRWD-1015	25.4	38.1	20.0	8.0	1	12
SRWD-1515	38.1	38.1	20.0	8.0	1	12
SRWD-1520	38.1	50.8	20.0	8.0	1	8
SRWDN1-1530	38.1	76.2	10.0	4.0	1	12
SRWD-2020	50.8	50.8	20.0	8.0	1	8
SRWDN1-2030	50.8	76.2	10.0	4.0	1	12
SRWD-4020	101.6	50.8	20.0	8.0	2	4



CONDUIT AND ACCESSORIES

Flexible Cable Conduit

Our products have been developed and tested to the most demanding quality standards and have been awarded quality approvals and compliance worldwide

We can offer you:

- Metallic and non-metallic conduit systems & accessories
- Contractor packs offering you the convenience of conduit, fittings and lock nuts in one simple pack
- Quality products that meet your every day needs
- User friendly products offering time saving innovations
- Expert advice and guidance on suitability of products for different applications
- Same day dispatch on all parts



Quick reference guide

Metallic Conduits

CONDUIT SYSTEM	IP Rating available	Compression Strength kg/100mm	Pull of strength kg	Colour	High fatigue life	Temp. range	Flexible	Low fire hazard	Halogen free	Self extinguishing	High abrasion resistance	High UV resistance
		20mm nominal size										
SR 1756 Galvanised Steel 	IP40	350	120	Zinc		-100°C to 300°C	✓	✓	✓	✓	✓	
SR 1757 PVC Coated Galv. Steel 	IP54	350	120	Black		-15°C to 70°C	✓					

Non-Metallic Conduits

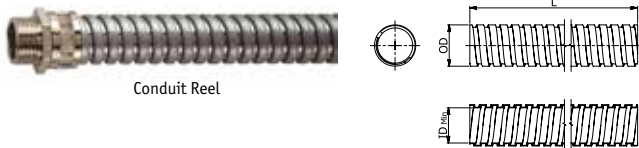
CONDUIT SYSTEM	IP Rating available	Compression Strength kg/100mm	Pull of strength kg	Colour	High fatigue life	Temp. range	Flexible	Low fire hazard	Halogen free	Self extinguishing	High abrasion resistance	High UV resistance
		20mm nominal size										
SR 1758 Nylon 	IP66, IP67	75	40	Black	✓	-40°C to 120°C	✓	✓	✓	✓	✓	✓
SR 1759 Polypropylene 	IP40, IP66	35	25	Black		-20°C to +90°C	✓			✓		

Galvanised Steel Conduit

SR 1756

Galvanised Steel

- Typical applications: underfloor wiring in office blocks
- High mechanical strength
- Highly flexible
- Temperature range -100°C to +300°C
- IP40 rating with standard fittings
- Low fire hazard product
- Self extinguishing
- High abrasion resistant



Fixed External Thread Nickel Plated Brass
Two part fitting comprising shell and body with external thread. This fitting can be inserted into a knockout and secured with a locknut.



Swivel External Thread Nickel Plated Brass
Two part fitting comprising shell and body. The external thread swivels about the main body. Can be used with threaded entries, or knockout secured with a locknut.

Part Number		Nominal Size (mm)	Outside Diameter (mm)	Inside Diameter (mm)	Min Inside Bend Radius	Std Pack Qty
10 m	25 m					
494589	494590	20	20.5	16.9	45	1
494593	-	25	25.0	21.1	55	1
494597	-	32	32.0	28.1	60	1

Fixed Fittings

External thread nickel plated brass

Part Number	Metric Thread Size	Std Pack Qty
494591	M20	10
494595	M25	10
494598	M32	2

Swivel Fittings

External thread nickel plated brass

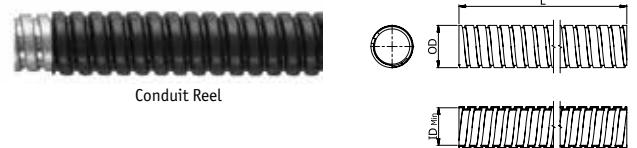
Part Number	Metric Thread Size	Std Pack Qty
494592	M20	10
494596	M25	10
494599	M32	2

PVC Coated Galvanised Steel Conduit

SR 1757

PVC Coated Galvanised Steel

- Typical applications include general factory wiring and connections to machines
- High mechanical strength
- Highly flexible
- IP54 rating with standard fittings
- Temperature range -15°C to 70°C
- Nickel plated brass fittings



Fixed External Thread Nickel Plated Brass
Two part fitting comprising shell and body with external thread. This fitting can be inserted into a knockout and secured with a locknut.



Swivel External Thread Nickel Plated Brass
Two part fitting comprising shell and body. The external thread swivels about the main body. Can be used with threaded entries, or knockout secured with a locknut.

Part Number		Nominal Size (mm)	Outside Diameter (mm)	Inside Diameter (mm)	Min Inside Bend Radius	Std Pack Qty
10 m	25 m					
494600	494601	20	20.5	16.9	45	1
494604	-	25	25.0	21.1	55	1
494608	-	32	32.0	28.1	60	1

Fixed Fittings

External thread nickel plated brass

Part Number	Metric Thread Size	Std Pack Qty
494602	M20	10
-	M25	10
494609	M32	2

Swivel Fittings

External thread nickel plated brass

Part Number	Metric Thread Size	Std Pack Qty
494603	M20	10
494607	M25	10
494610	M32	2

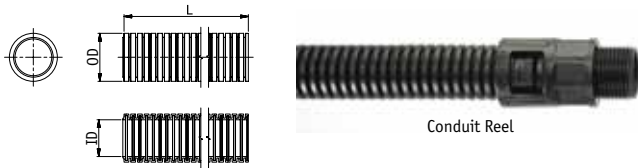
CONDUIT AND ACCESSORIES

Nylon conduit

SR 1758

Black Nylon

- Halogen, sulphur and phosphorus free
- Temperature range: -40°C to 120°C (-20°C to 100°C for moving applications)
- Highly flexible and high fatigue life
- High impact strength and recovers if crushed
- Self-extinguishing
- IP66 when used with standard fittings
- High abrasion resistant
- High UV resistance
- UL94-V2 flame retardancy
- Highly resistant to solvents and oils
- Typical applications include: usage with all types of machinery and in public buildings



Conduit Reel

90° elbow external thread fitting
One piece, slim, fast fit, external threaded
90° elbow fitting suitable for knockouts
(Supplied with locknuts)



Straight external thread fitting
One piece, slim, fast fit, external threaded
fitting suitable for knockouts or threaded
entries. (Supplied with locknuts)



Nylon

Part Number	Nominal Size (mm)	Outside Diameter (mm)	Inside Diameter (mm)	Min Inside Bend Radius	Std Pack Qty
25 m	50 m				
-	494611	20	20.0	14.8	45
494614	494615	21	21.2	16.7	45
494618	494619	25	25.0	19.1	50
494622	494623	28	28.5	22.8	50

Straight external thread

Part Number	Metric Thread Size	Std Pack Qty
494612	M20	10
494616	M21	10
494620	M25	10
494624	M28	10

90° Elbow external thread

Part Number	Metric Thread Size	Std Pack Qty
494613	M20	10
494617	M21	10
494621	M25	10

Corrugated Tubing

CT

Black, PA 6 Heat Stabilised, RMS-423; LDPE, RMS-421

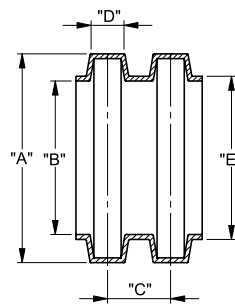


Fig. 1
Solid Version

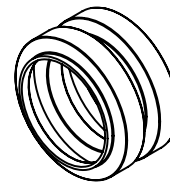
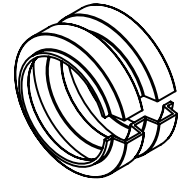


Fig. 2
Slit Version



Part Number				Dimensions (mm)					Std Pack Qty
PA 6 Heat Stabilised, RMS 423		LDPE, RMS-421		Ø "A"	Ø "B"	"C"	"D"	"E"	
Type 1 Solid Version	Type 2 Slit Version	Type 1 Solid Version	Type 2 Slit Version						
CT-4.5-A-PA-BK	CT-S4.5-A-PABK	CT-4.5-A-LDPE-B	CT-S4.5-A-PEBK	7.1	4.8	2.2	1.2	5.1	100m
CT-8.5-A-PA-BK*	CT-S8.5-A-PABK	CT-8.5-A-LDPE-B	CT-S8.5-A-PEBK	11.7	8.4	2.4	1.5	8.8	100m
CT-10-A-PA-BK*	CT-S10-A-PA-BK	CT-10-A-LDPEBK	CT-S10-A-PE-BK	13	9.9	2.7	1.8	10.4	100m
CT-12-A-PA-BK*	CT-S12-A-PA-BK	CT-12-A-LDPEBK	CT-S12-A-PE-BK	15.7	12.2	3.1	2.2	12.8	100m
CT-17-A-PA-BK	CT-S17-A-PA-BK	CT-17-A-LDPEBK	CT-S17-A-PE-BK	21.2	16.6	3.3	2.3	17.2	50m
CT-23-A-PA-BK	CT-S23-A-PA-BK	CT-23-A-LDPEBK	CT-S23-A-PE-BK	28.3	23.2	3.4	2.3	24	50m
CT-29-A-PA-BK*	CT-S29-A-PA-BK	CT-29-A-LDPEBK	CT-S29-A-PE-BK	34.5	29	3.4	2.3	29.8	25m

*UL File No. E350965

Polypropylene Contractor Packs

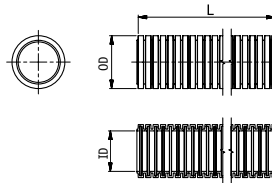
SR 1759

Polypropylene

- Includes 10m of Polypropylene conduit as well as 10 fittings and lock nuts
- All supplied in a handy carry pack for easy ordering, storage and usage
- Typical applications include: buildings, particularly when buried in concrete and plaster
- IP66 when used with standard fittings
- Acid resistant
- Temperature range -20°C to 90°C
- Self extinguishing



Part Number	Description	I.D	Std Pack Qty
494626	M20 thread	14.8	1
494627	M25 thread	19.1	1

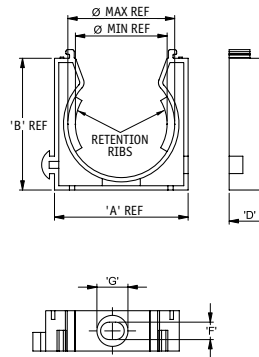


CT Holder - stackable

CT-HSU

UL94 V0 Nylon 6, RMS-435, Black

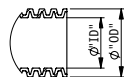
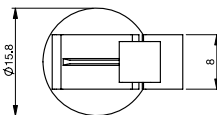
Part Number	Dimensions (mm)							Accepts Tubing Size	Std Pack Qty
	'A'	'B'	'D'	'F'	'G'	Ø Min.	Ø Max		
CT-HSU7-BK	21.5	21	14	4.5	8	6.6	11.5	CT-8.5	25
CT-HSU9-BK	21.5	21	14	4.5	8	10.8	13	CT-10	50
CT-HSU11-BK	28	29	14	5.5	10	11.2	15.6	CT-12	50
CT-HSU16-BK	28	29	14	5.5	10	16.1	21	CT-17	50
CT-HSU21-BK	43	42.4	14	5.5	10	19.6	24.5	CT23	50
CT-HSU29-BK	43	42.4	14	5.5	10	29.6	34.5	CT29	25



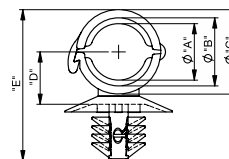
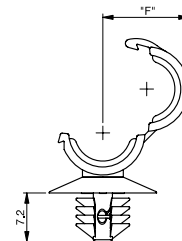
Hinged Locking Clamps

HLCC

Heat stabilized UL94-V2 Nylon 6/6, RMS-47, Black



Tube dimensions



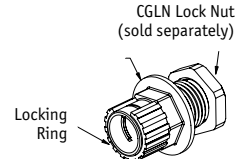
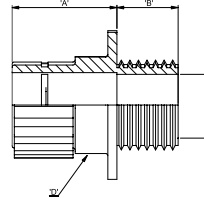
Part number	Recommended Corrugated Tube Size		Panel Hole Ø	Panel Thickness	Dimensions (mm)						Std Pack Qty
	ID	OD			"A"	"B"	"C"	"D"	"E"	"F"	
HLCC-1BK	5	7.1	6.5 - 7.0	0.8 - 3	5.8	7.2	9.6	6.3	19.7	9.8	1000
HLCC-2BK	6.9	9.9	6.5 - 7.0	0.8 - 3	8.3	10	12.4	7.7	22.2	12.6	1000

CONDUIT AND ACCESSORIES

CT Connector - Slotted

CT-MSV

Black UL94-V0 Nylon 6, RMS-435, Clip Ring: POM RMS-434

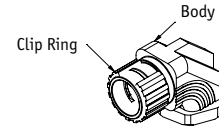
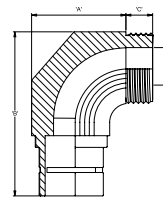


Part Number	Dimensions (mm)					Accepts Tubing Size	UL File No.	Associated CGLN lock Nut (sold separately)	Std Pack Qty
	'A'	'B'	'C' Ø	'D' Ø	Thread Size				
CT-MSV7-M12-BK	19	13	8	16	M12 x 1.5	CT-8.5	E350965	CGLN-M12	50
CT-MSV9-M16-BK	19	13	10	18	M16 x 1.5	CT-10	E350965	CGLN-M16	50
CT-MSV11-M16-BK	23	14	13.5	21	M16 x 1.5	CT-12	E350965	CGLN-M16	50
CT-MSV16-M20-BK	26	14	19	27	M20 x 1.5	CT-17	E350965	CGLN-M20	50
CT-MSV21-M25-BK	32	14	26	36	M25 x 1.5	CT-23	E350965	CGLN-M25	25

CT Connector - Wide Angle

CT-WSV

Black UL94-V0 Nylon 6, RMS-435, Clip Ring: POM RMS-434

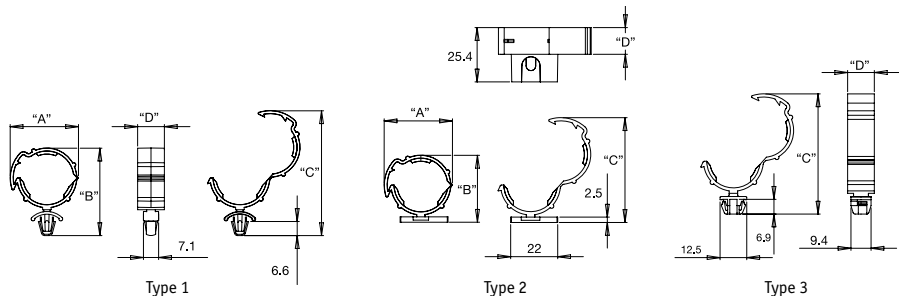


Part Number	Dimensions (mm)					Accepts Tubing Size	CGLN lock Nut (sold separately)	UL File No.	Std Pack Qty
	'A'	'B'	'C'	'D' Ø	Connecting Thread				
CT-WSV9-M16-BK	26	42	7.5	10	M16 x 1.5	CT-10	CGLN-M16	E350965	50
CT-WSV11-M20-BK	29	50	8	12	M20 x 1.5	CT-12	CGLN-M20	E350965	50
CT-WSV16-M25-BK	32	59	10	16	M25 x 1.5	CT-17	CGLN-M25	E350965	50
CT-WSV21-M32-BK	39	69	11	22	M32 x 1.5	CT-23	CGLN-M32	NO UL	25

SHR Clips

SHR-C

Black UL94-V2 Nylon 6/6, RMS-01



Part Number	Type	Dimensions (mm)				Accepts SHR Size	Mounting Method	Std Pack Qty
		"A"	"B"	"C"	"D"			
SHR-C1	1	29	42.5	58	12.5	To hold Richco Harness Wrap SHR-20 and SHR-25 sizes	Snap Lock into a 6.4 Hole in a 0.8-2 Panel	500
SHR-C2	2	30	32.5	47	12.5		#8 or M4 Screw	500
SHR-C3	2	30	32.5	47	12.5		0.8 Thick Double Sided Adhesive Tape, RMS-375	500
SHR-C4	3	30	40.5	56	12.5		Snap Lock into a 9.5 Square Hole in a 0.8-2 Panel	500

Metal Edge Mounting Clip for Corrugated Tube

SR 6262

Polyamide and Stainless Steel 302

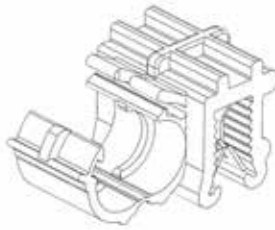
- Push on plastic/metal sheet edge anchors, for use with corrugated tubing
- Simple Tube mounting solution for all sheet material applications
- Top or side mounting options
- Individual or multi-tube mounting on same base



Type 1



Type 2



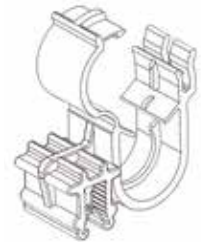
Type 3



Type 4



Type 5



Type 6

Part Number	Dimensions (mm)						Type	Corrugated Tube NW	Std Pack Qty
	Panel Thickness (mm)	Width	Length	Height	Height to CT Centre				
550261	0.7-3mm	15	15	20	15.5	1	NW 4.5	100	
550262	0.7-3mm	15	15	20	15.5	2	NW 4.5	100	
550263	0.7-3mm	20	15	14.5	6.5	3	NW 4.5	100	
550264	3-6mm	20	20	17	7.7	3	NW 4.5	100	
550265	3-6mm	20	20	21	18.5	2	NW 4.5	100	
550266	3-6mm	15	15	23	17.5	2	NW 7.5	100	
550267	3-6mm	12	22	23	18.5	1	NW 10	100	
550268	0.7-3mm	22	15	20	8.7	3	NW 10	100	
550269	3-6mm	22	20	20	8.9	3	NW 10	100	
550270	0.7-3mm	12	34	24.4	19.4	4	2 x NW 10	100	
550271	0.7-3mm	15	41	20	13.6	5	2 x NW 10	100	
550272	0.7-3mm	30	15	30	8.5/18.5	6	2 x NW 10	100	
550273	0.7-3mm	15	15	23.5	10.5	3	NW 13	100	
550274	3-6mm	23	20	32	23.3	2	NW 13	100	
550275	3-6mm	13	23	30	20	1	NW 13	100	
550276	0.7-3mm	30	15	32	22.7	2	NW 17	100	

CT-Corrugated tubing

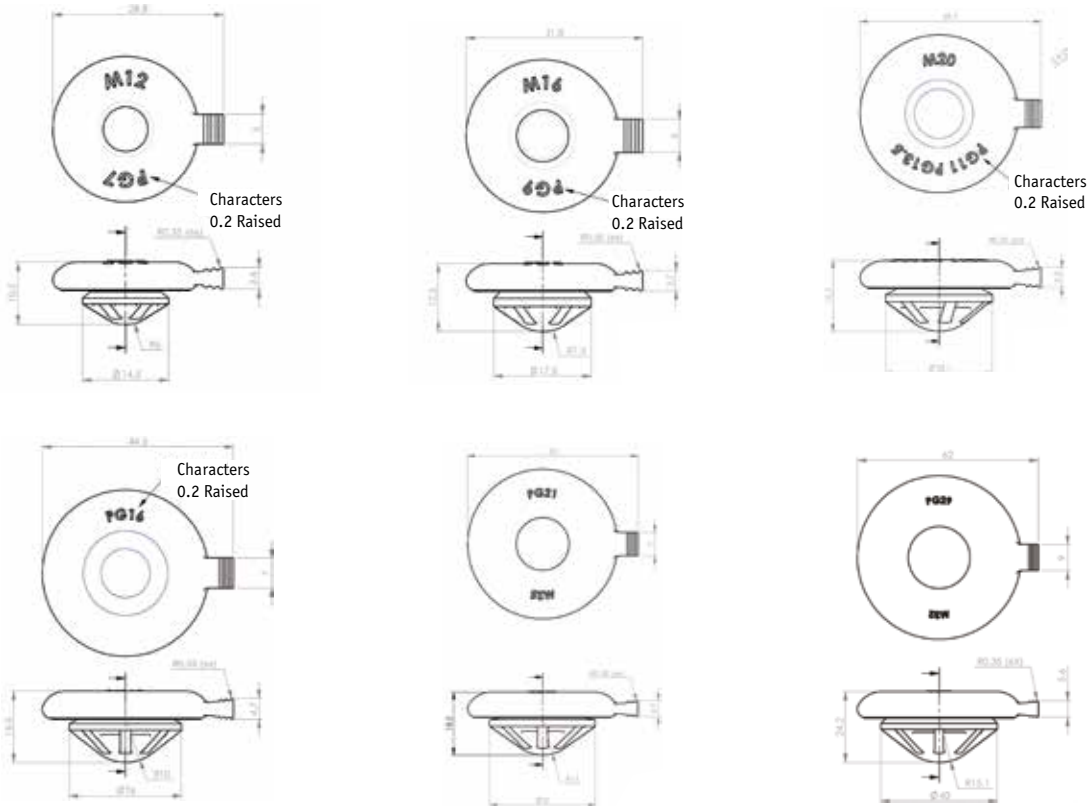
GROMMETS, STRAIN RELIEF AND BLANKING PLUGS

Push In Cable Blanking Plug

SR 6275

Silicone Rubber

- Protective cover for cable gland mounting holes
- Can be pushed into place on the end of a tool
- Range of panel depths
- Fits standard Metric and PG sizes
- Pull tab for easy release
- Complies with IP67



Part Number	Dimensions (mm)			Cable Gland Sizes Metric/PG	Std Pack Qty
	Hole Diameter	Panel Thickness Range			
551846	12.2 -12.5	1-2		M12 / PG7	1000
551847	15.4 -16.2	1-2		M16 / PG9	500
551848	18.8 -20.7	1-2		M20 / PG11 + PG13.5	500
551849	22.8	1-2		PG16	100
551850	25.2 -28.6	1-2		M25 / PG21	100
551851	32.2 -35.4	1-2		M32	100

Standard Grommets - Imperial

SR1700/1701

Black PVC

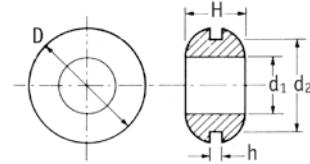
- Protects wires and cables passing through panels

Black Thermoplastic Rubber

- Resistant to most oils and greases
- Withstands temperatures from -40°C to 135°C

TPE

- A greener alternative to PVC
- Suitable for harsh environments with a wider operating temperature range
- Very stable material offering a long operating life



Part Number		Mounting Hole (mm)	Panel Hole Thickness (mm)	Dimensions (mm)			Std Pack Qty
PVC	TPR			d1	D	H	
11177	15057	4.8	0.8	2.8	8.0	4.8	10000
11026	15058	4.8	1.6	3.2	8.0	6.4	10000
15515	-	6.0	1.2	3.2	8.8	4.0	10000
10629*	15060	6.4	0.8	4.0	9.5	4.0	10000
11333	15059	6.4	1.6	4.0	9.5	6.3	10000
10280	15061	6.4	1.6	4.8	9.5	7.0	10000
12603	-	6.4	1.6	4.8	9.5	7.0	10000
11402	15062	6.4	3.0	4.0	9.5	8.0	10000
498069	-	7.0	1.5	4.8	11.1	6.4	10000
10518	-	9.5	1.6	4.8	12.5	6.8	10000
15501	-	7.9	1.2	5.6	11.1	6.4	10000
10117	-	7.9	1.6	3.0	11.0	8.0	10000
-	15064	8.0	0.8	4.8	11.0	4.8	10000
11105	-	8.0	0.8	5.5	11.0	5.5	10000
10597*	-	8.0	1.6	5.5	11.0	5.5	10000
-	15065	8.0	1.6	5.5	11.0	5.5	10000
10489	-	8.0	0.8	4.8	11.0	4.8	10000
11318	15072	9.5	1.2	7.0	13.8	4.0	10000
-	15067	9.5	1.6	4.8	12.5	6.8	10000
10885*	15069	9.5	1.6	6.4	14.2	6.4	10000
11178	-	9.5	1.6	6.4	14.2	7.0	10000
11303	-	9.5	1.6	6.4	14.2	5.0	10000
10428	15073	9.5	1.6	8.0	14.2	4.8	10000
11107	15074	9.5	1.6	8.0	14.2	8.0	10000
15505	-	9.5	1.2	5.6	11.1	4.0	10000
-	15068	9.5	2.4	6.4	14.2	7.0	10000
15523	-	9.6	3.2	4.0	15.9	6.4	10000
11272	15071	10.2	1.2	7.0	13.8	4.5	10000
40045	-	10.3	1.6	7.2	14.3	4.0	10000
40041	-	10.3	1.6	7.9	15.9	7.9	10000
11146	15075	11.0	1.6	8.0	14.2	4.8	10000
11151	15076	11.0	1.6	8.0	14.2	8.0	10000
10744	15078	11.0	1.6	8.0	16.0	6.4	10000
15524	-	11.9	1.6	6.4	15.9	7.9	5000
15506	-	11.9	2.0	9.6	17.5	6.8	5000
10605	15079	12.5	1.6	6.4	16.0	8.0	10000
10646	15080	12.5	1.6	8.0	16.0	6.4	10000
10644	15084	12.5	1.6	9.5	17.0	7.0	10000
11019	-	12.5	1.6	9.5	19.0	6.4	5000
10881	15086	12.5	1.6	11.0	19.0	6.4	5000
10770	15081	12.5	3.0	8.0	16.0	8.0	10000
10911	15083	12.5	3.0	9.5	17.0	8.8	10000
15508	-	13.5	3.2	9.6	19.0	9.6	5000
40042	-	13.5	4.0	9.6	23.0	8.8	5000
10592	-	14.2	1.6	9.5	19.0	6.4	5000
10281	15087	14.2	1.6	11.0	19.0	6.4	5000
15528	-	15.9	0.8	11.1	19.0	9.5	5000
40010**	-	15.9	1.2	12.7	20.6	5.0	10000

Part Number		Mounting Hole (mm)	Panel Hole Thickness (mm)	Dimensions (mm)			Std Pack Qty
PVC	TPR			d1	D	H	
10738	15089	16.0	1.2	12.5	20.5	7.0	5000
10628	15090	17.5	1.6	12.5	22.0	6.4	4000
10512	-	17.5	1.6	14.2	22.0	4.8	10000
15500	-	19.0	1.6	12.0	25.4	7.9	2000
11029	15096	19.0	1.6	12.5	25.5	6.4	2500
11326	-	19.0	1.6	16.0	22.0	5.5	10000
10293	15093	19.0	1.6	16.0	24.0	6.0	7000
10215	-	19.0	1.6	17.5	24.0	4.8	10000
40047	-	19.0	4.8	11.1	25.4	9.5	8000
11181	-	20.0	1.6	12.5	25.5	6.4	2500
30007	15095	20.0	1.6	16.0	24.0	6.5	7000
11025	-	20.5	1.2	16.0	27.0	8.0	4000
-	15098	20.5	1.2	16.0	27.0	8.0	10000
11213	-	25.2	1.2	18.5	31.4	7.5	2000
10487	15099	25.2	1.6	18.5	31.4	8.0	2000
10419	-	25.2	1.6	22.0	30.0	8.0	4000
-	15101	25.5	1.6	22.0	30.0	8.0	10000
15514**	-	30.6	3.2	25.4	44.4	9.9	1000
11214	15102	31.0	1.6	24.9	38.0	7.8	2000
11208	-	32.0	0.8	25.5	44.5	6.4	1000
10446	15105	37.0	1.6	31.2	45.5	9.5	1000
10261	15104	38.0	3.0	32.0	46.0	11.0	1000
11072	15106	50.0	1.6	45.0	60.0	10.0	500

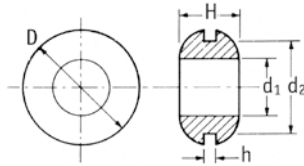
* Grade VX321 Shore A 43

** Curved internal shoulders

TPE

Part Number		Mounting Hole (mm)	Panel Hole Thickness (mm)	Dimensions (mm)			Std Pack Qty
UL94-HB TPE	UL94-V0 TPE			d1	D	H	
HG-2	HG-2-V0	4.8	1.6	3.2	8.0	6.4	1000
HG-2.5	HG-2.5-V0	6.4	1.6	4.0	9.5	6.3	1000
HG-3	HG-3-V0	7.7	0.8	4.8	10.9	4.8	1000
HG-3.5	HG-3.5-V0	8.0	0.8	5.5	11.0	5.5	1000
HG-4	HG-4-V0	9.5	1.6	6.4	14.2	7.0	1000
HG-5	HG-5-V0	10.9	1.6	8.0	14.3	4.8	1000
HG-17	HG-17-V0	11.0	2.0	8.0	16.0	7.0	1000
HG-6	HG-6-V0	12.5	1.6	9.5	17.0	7.0	1000
HG-8	HG-8-V0	16.8	1.6	12.6	21.5	6.4	1000
HG-9	HG-9-V0	17.1	1.6	14.2	22.2	4.8	1000
HG-11	HG-11-V0	18.7	1.6	17.1	23.7	4.8	1000
HG-10	HG-10-V0	18.8	1.6	15.5	22.2	5.6	1000
HG-18	HG-18-V0	19.0	2.4	12.7	24.0	7.1	1000
HG-12	HG-12-V0	24.8	1.6	18.6	31.3	8.0	1000
HG-14	HG-14-V0	25.1	1.6	21.8	30.2	8.0	1000
HG-16	HG-16-V0	31.5	1.6	24.6	38.1	8.0	1000

GROMMETS, STRAIN RELIEF AND BLANKING PLUGS



Standard Grommets - Metric

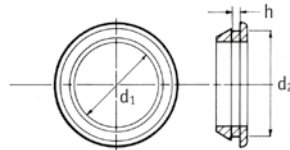
SR1700/SR1713

SR1700 Black PVC/SR1713 Black EPDM

- Protect wires and cables passing through panels
- EPDM - heat resistant material for use in extreme temperature environments -40 °C to 125 °C

Part Number		Dimensions (mm)					Std Pack Qty
PVC	EPDM	Mounting Hole (d2)	Panel Hole Thickness	d1	D	H	
498021	498062	5.0	1.0	2.0	8.0	4.0	1000
498022	498063	5.0	1.5	2.0	8.0	4.5	1000
498023	498064	5.0	2.0	2.0	8.0	5.0	1000
498024	498065	5.0	1.0	3.0	8.0	4.0	1000
498025	498066	5.0	1.5	3.0	8.0	4.5	1000
498026	498067	5.0	2.0	3.0	8.0	5.0	1000
498027	498068	7.0	1.5	3.0	10.0	6.0	500
498028	498070	8.0	1.0	4.0	11.0	8.0	500
498029	498071	8.0	2.0	4.0	11.0	6.0	500
498030	498072	8.0	3.0	4.0	11.0	7.0	500
498031	498073	8.0	1.0	6.0	11.0	5.0	500
498032	498074	8.0	2.0	6.0	11.0	6.0	500
-	498075	9.0	1.0	6.0	12.0	5.0	500
-	498076	9.0	1.5	6.0	12.0	5.5	500
-	498077	9.0	2.0	6.0	12.0	6.0	500
-	498078	9.0	3.0	6.0	12.0	7.0	500
-	498079	9.0	4.0	6.0	12.0	8.0	500
498033	498080	10.0	1.0	6.0	14.0	6.0	500
498034	498081	10.0	1.5	6.0	14.0	6.5	500
498035	498082	10.0	2.0	6.0	14.0	7.0	500
498036	498083	10.0	3.0	6.0	14.0	8.0	500
498037	498084	10.0	1.0	8.0	14.0	6.0	500
498038	498085	10.0	1.5	8.0	14.0	6.5	500
498039	498086	10.0	2.0	8.0	14.0	7.0	500
498040	498087	10.0	3.0	8.0	14.0	8.0	500
-	498088	11.0	1.0	8.0	16.0	6.0	250
-	498089	11.0	2.0	8.0	16.0	7.0	250
-	498090	11.0	3.0	8.0	16.0	8.0	250
-	498091	11.0	4.0	8.0	16.0	9.0	250
498041	498092	12.0	1.0	8.0	16.0	6.0	250
498042	498093	12.0	2.0	8.0	16.0	7.0	250
498043	498094	12.0	3.0	8.0	16.0	8.0	250
498044	498095	12.0	4.0	8.0	16.0	9.0	250

Part Number		Dimensions (mm)					Std Pack Qty
PVC	EPDM	Mounting Hole (d2)	Panel Hole Thickness	d1	D	H	
498045	498096	12.0	1.0	10.0	16.0	6.0	250
498046	498097	12.0	1.5	10.0	16.0	6.5	250
498047	498098	12.0	2.0	10.0	16.0	7.0	250
498048	498099	12.0	3.0	10.0	16.0	8.0	250
-	498100	14.0	1.0	11.0	18.0	6.0	250
-	498101	14.0	2.0	11.0	18.0	7.0	250
-	498102	14.0	3.0	11.0	18.0	8.0	250
498049	498103	15.0	1.0	11.0	20.0	6.0	250
498050	498104	15.0	2.0	11.0	20.0	7.0	250
498051	498105	15.0	3.0	11.0	20.0	8.0	250
498052	498106	15.0	4.0	11.0	20.0	9.0	250
498053	498107	18.0	1.0	12.0	22.0	6.0	250
498054	498108	18.0	2.0	12.0	22.0	7.0	250
498055	498109	18.0	3.0	12.0	22.0	8.0	250
498056	498110	18.0	4.0	12.0	22.0	9.0	250
498057	498111	22.0	1.0	16.0	27.0	7.0	100
498058	498112	22.0	1.5	16.0	27.0	7.5	100
498059	498113	22.0	2.0	16.0	27.0	8.0	100
498060	498114	22.0	3.0	16.0	27.0	9.0	100
498061	498115	22.0	4.0	16.0	27.0	10.0	100
-	498116	27.0	1.0	21.0	34.0	9.0	50
-	498117	27.0	2.0	21.0	34.0	10.0	50
-	498118	27.0	3.0	21.0	34.0	11.0	50
-	498119	27.0	4.0	21.0	34.0	12.0	50
-	498120	40.0	1.0	31.0	48.0	12.0	25
-	498121	40.0	2.0	31.0	48.0	13.0	25
-	498122	40.0	3.0	31.0	48.0	14.0	25
-	498123	40.0	4.0	31.0	48.0	15.0	25
-	498124	52.0	1.0	41.0	60.0	13.0	10
-	498125	52.0	2.0	41.0	60.0	14.0	10
-	498126	52.0	3.0	41.0	60.0	15.0	10
-	498127	52.0	4.0	41.0	60.0	16.0	10



Quick-Fit Grommets

SR 1702

Black PVC/TPE, RMS-262/Silicone Rubber, RMS-368

- Snap neatly and quickly into position

PVC

Part Number			Dimensions (mm)		Std Pack Qty
Panel Thickness h (mm)			d1	d2	
1.5mm	2.0mm	3.0mm			
16200	16210	16220	6.0	10.0	5000
16201	16211	16221	7.0	11.0	10000
16202	16212	16222	8.0	12.0	10000
16203	16213	16223	10.0	14.0	10000
16204	16214	16224	12.0	16.0	10000
16205	16215	16225	14.0	18.0	10000
16206	16216	16226	16.0	20.0	4000
16207	16217	16227	18.0	22.0	4000
16208	16218	16228	22.0	26.0	4000
16209	16219	16229	24.0	28.0	2000

TPE/Silicone

Part Number			Dimensions (mm)		Std Pack Qty
Panel Thickness h (mm)			d1	d2	
1.5mm	2.0mm	3.0mm			
TPE	TPE	Silicone			
QFG-16200	-	-	6.0	10.0	1000
QFG-16201	-	-	7.0	11.0	1000
QFG-16203	-	-	10.0	14.0	1000
QFG-16204	-	-	12.0	16.0	1000
QFG-16207	-	-	18.0	22.0	1000
-	QFG-16207	-	22.0	26.0	1000
-	-	QFG-1	13.0	18.5-20	1000

GROMMETS, STRAIN RELIEF AND BLANKING PLUGS

Grommets IP67

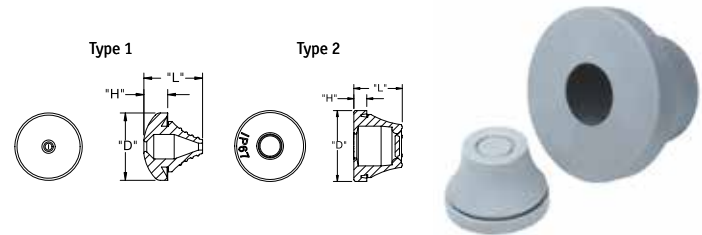
SR 1703

EPDM

- Provide dust and watertight seal
- Suitable for external applications
- Act as a blanking plug until cable is installed
- Withstand vibration

- Quick and easy to install:

1. Press into hole
2. Puncture diaphragm by inserting wire
3. Gently pull cable back to secure



Metric Range (Type 2)

Part Number (Grey)	Part Number (Black)	Panel Hole Size	Dimensions (mm)			Panel Thickness Range (mm)	Compatible Cable Diameter Range (mm)	Std Pack Qty
			D	L	H			
283120001499	283120059999	M12	20.0	12.8	7.2	0.5-2.0	4.0-7.0	50
283160001499	283160059999	M16	21.0	17.7	6.7	1.0-4.0	5.0-9.0	50
283200001499	283200059999	M20	25.5	20.0	6.6	1.0-4.0	8.0-13.0	50
283250001499	283250059999	M25	30.5	21.3	6.0	1.0-4.0	11.0-17.0	50
283320001499	283320059999	M32	38.5	24.6	6.0	1.0-4.0	15.0-20.0	25
283400001499	283400059999	M40	48.5	29.5	7.8	1.0-4.0	19.0-28.0	25
283500001499	283500059999	M50	60.5	34.8	9.8	1.0-4.0	27.0-35.0	10
283630001499	283630059999	M63	73.5	40.0	10.0	1.0-4.0	34.0-45.0	5

PG Range

Part Number (Grey) Type 2	Part Number (Black) Type 2	Part Number (Type 1)	Panel Hole Size	Dimensions (mm)			Panel Thickness Range (mm)	Compatible Cable Diameter Range (mm)	Std Pack Qty
				D	L	H			
283120101499	283120159999	LTG-199017*	PG-7	20.0	12.6	7.2	0.5-2.0	3.0-5.0	50
283160101499	283160159999	-	PG-9	21.0	17.8	7.5	1.0-4.0	5.0-7.0	50
283200101499	283200159999	-	PG-11	24.0	19.8	7.1	1.0-4.0	7.0-10.0	50
283250101499	283250159999	-	PG-16	28.0	21.6	6.9	1.0-4.0	10.0-14.0	50
283320101499	283320159999	-	PG-21	35.0	24.6	7.0	1.0-4.0	14.0-20.0	25
283400101499	283400159999	-	PG-29	46.0	28.5	8.5	1.0-4.0	20.0-26.0	25
283500101499	283500159999	-	PG-36	58.0	34.9	11.0	1.0-4.0	26.0-35.0	10

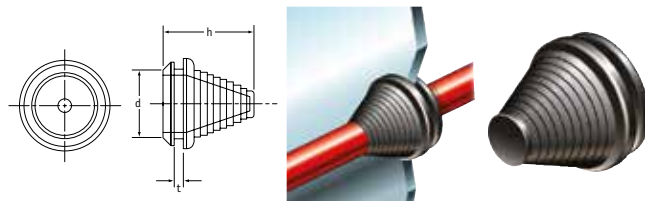
* Standard Pack Quantity = 1000

Stepped Grommets

SR 1709

Black PVC

- Stepped sleeve can be cut to requirements
- Suit a range of cable diameters
- Protect cables passing through panels
- Act as blanking plug until cut



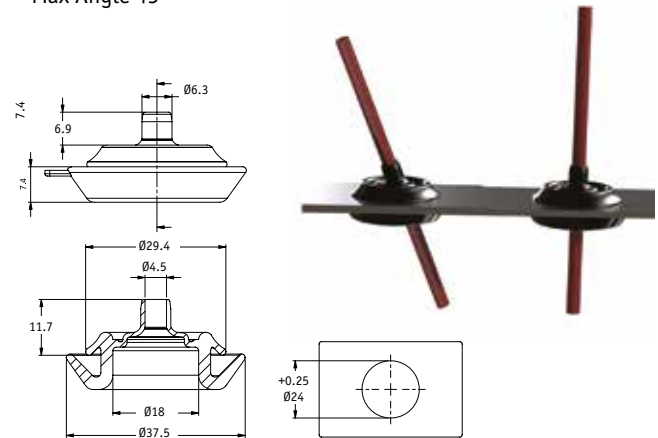
Part Number	Dimensions (mm)			Cable Range (mm)	Std Pack Qty
	d	t	h		
462039	12.7	3	32.5	5-9	1000
462040	21.0	3	27.5	5-17	1000
462041	26.0	3	29.5	10-22	1000

Angular Hole Grommet

AHG

Black EPDM 60 Shore A RMS-420

- Max Angle 45 °



Part Number	Ø Cable Size	Dimensions (mm)		Std Pack Qty
		Panel Thickness	Hole Ø	
AHG-1	5-7	1 - 2.5	24	500

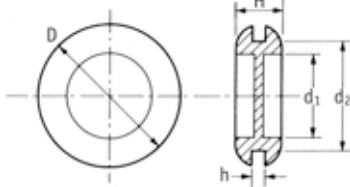
GROMMETS, STRAIN RELIEF AND BLANKING PLUGS

Diaphragm Grommets

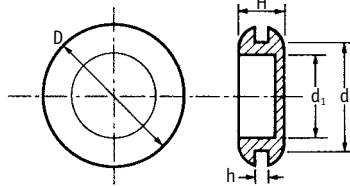
SR 1705

Black PVC/TPE, RMS-262

- Thin central film can be pierced to allow a range of different-sized wires to pass through



Type 1



Type 2

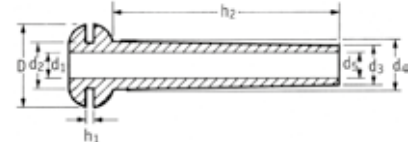
Part Number	Type	Material	Dimensions (mm)					Std Pack Qty
			D	d1	d2	h	H	
19426	1	PVC	19.0	11.0	16.0	1.5	5.8	5000
19427	1	PVC	22.0	12.5	16.0	2.4	8.0	5000
19428	1	PVC	25.5	15.5	19.0	1.6	8.0	2500
15512	1	PVC	25.4	15.9	19.0	2.0	7.9	2500
10134	1	PVC	25.5	15.5	19.0	2.4	8.8	2500
19429	1	PVC	25.5	15.5	19.0	3.2	9.6	2500
10187	1	PVC	25.5	15.5	20.0	1.6	8.0	2500
10806	1	PVC	36.5	19.0	25.5	2.4	8.4	2000
19430	1	PVC	39.0	25.5	32.0	2.4	8.0	1000
19431	1	PVC	39.0	25.5	32.0	4.0	9.5	1000
19432	2	PVC	12.7	6.4	9.9	1.6	6.7	10000
19433	2	PVC	15.7	9.5	12.5	1.5	6.4	10000
19434	2	PVC	17.5	8.0	11.0	1.6	8.0	10000
19435	2	PVC	19.0	11.0	16.0	1.6	8.0	5000
19436	2	PVC	25.5	18.8	22.0	1.6	8.0	4000
19437	2	PVC	25.5	16.0	19.0	1.5	7.0	4000
19438	2	PVC	25.5	16.0	20.0	1.5	7.0	4000
19439	2	PVC	30.0	20.5	25.5	1.5	8.0	2000
19442	2	TPE	49.0	31.0	42.0	2.4	10.1	1000
DGB-2.5	2	TPE	9.4	4.1	6.4	0.8	3.6	1000
DGB-4	2	TPE	12.7	6.4	9.9	1.5	6.6	1000
DGB-5	2	TPE	15.7	9.5	12.5	1.5	6.4	1000
DGB-6	2	TPE	17.5	8.0	11.0	1.5	8.0	1000
DGB-7	2	TPE	19.0	11.0	16.0	1.5	8.0	1000
DGB-10	2	TPE	25.5	18.4	22.0	1.5	8.0	1000
DGB-11	2	TPE	25.5	16.0	19.0	1.5	7.0	1000
DGB-13	2	TPE	30.0	20.5	25.5	1.5	8.0	1000

Grommet Sleeves

SR 1710

Black PVC

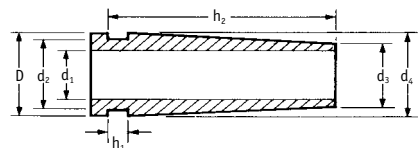
- Provide extra support and protection for cables and wires passing through panels



Type 1

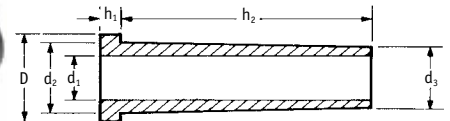
Part Number	Dimensions (mm)								Std Pack Qty
	D	d2	d1	d5	h1	d4	d3	h2	
12461*	14.2	7.6	6.1	5.5	3.8	8.2	7.1	31.7	1000
60466	14.3	8.7	5.1	5.1	1.6	8.7	7.1	42.0	1000
50687	14.2	9.5	6.4	6.4	2.4	9.5	7.9	14.3	1000
12468	14.0	9.5	6.4	6.4	2.6	9.5	7.9	23.0	1000

* Features a flange on the narrow end.



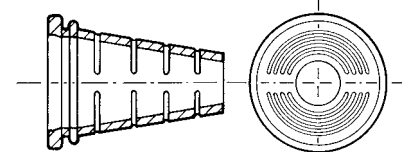
Type 2

Part Number	Dimensions (mm)							Std Pack Qty
	D	d2	d1	h1	d4	d3	h2	
12462	15.1	12.7	9.5	3.2	14.3	11.9	35.5	1000
51409	19.1	12.7	9.7	0.8	15.1	12.2	26.8	1000



Type 3

Part Number	Dimensions (mm)						Std Pack Qty
	D	d1	d2	d3	h1	h2	
40016	9.5	4.0	7.1	5.4	2.6	21.8	1000
15517	9.8	4.0	7.5	5.6	2.4	38.9	5000
12463	11.5	6.8	9.3	9.3	1.6	36.0	1000
60218	14.0	6.2	9.6	8.0	1.6	41.3	1000
60752	14.3	7.9	11.1	10.5	3.2	38.1	1000
12464	19.1	10.3	14.3	12.7	3.2	38.1	1000



Multi-Cable Grommet

- Graduated sleeve can be cut to requirements

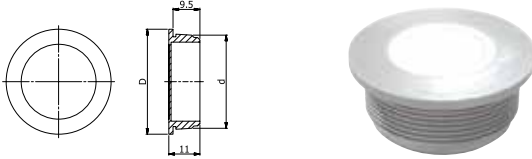
Part Number	Dimensions (mm)			Std Pack Qty
	Hole Size (mm)	Panel Thickness	Cable Range	
12312	20.0	1.6	8.0-17.0	1000

Push In Twin Component Grommet

SR 1753

Grey Polyethylene / Thermoplastic elastomere

- IP 66
- Temperature range: -40°C to 80°C, intermittent to approximately 100°C
- Dust tight, quick and easy mounting
- For enclosures with more than 2mm wall thickness



Part Number	Dimensions (mm)			Cable Range (mm)	Std Pack Qty
	d	D	Height		
494632	16.0	21.2	11.0	1.0 - 9.0	100
494633	20.0	25.2	11.0	1.0 - 13.0	100
494634	25.0	30.2	11.0	1.0 - 18.0	100
494635	32.0	37.2	11.0	1.0 - 25.0	50

Screw In Twin Component Grommet

SR 1752

Grey Polypropylene / Thermoplastic elastomere

- IP 66
- Temperature range: -30°C to 80°C, intermittent to approximately 100°C
- Dust tight, quick and easy mounting
- For applications with threaded holes or fixing without locknut



Part Number	Thread Size (d)	Dimensions (mm)			Cable Range (mm)	Std Pack Qty
		SW	D	Height (mm)		
494628	M16 x 1.5	17.0	19.0	15.0	1.0 - 9.0	100
494629	M20 x 1.5	20.0	22.0	15.0	1.0 - 13.0	100
494630	M25 x 1.5	24.0	27.0	15.0	1.0 - 18.0	100
494631	M32 x 1.5	32.0	36.0	15.0	1.0 - 25.0	50

Strain Relief Membrane Entry

SR 1755

Grey Polyamide / Thermoplastic Elastomere

- IP 66 / 67
- Temperature range: -40°C to 65°C
- UV resistant
- Suitable for applications where space is limited and flexibility and appearance are important
- Wall thickness: 0.8 - 3.5mm



Part Number	Dimensions (mm)			Cable Range (mm)	Std Pack Qty
	d	D	Height		
494642	20.7	33	15.0	6.0 - 13.0	100

Membrane Entry

SR 1754

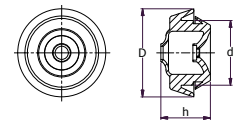
Nylon / Thermoplastic Elastomere

- IP 67
- Temperature range: -20°C to 125°C
- Suitable for unthreaded holes
- Quick and easy installation without tools
- Cable anchorage type A (same standard as most cable glands)

- Sealed until the cable is installed
- Push out the membrane using the cable
- Panel Thickness: 1.5-5.0mm



Part Number			Panel Hole Size	Dimensions (mm)			Compatible Cable Diameter Range (mm)	Compatible Panel Hole Thickness (mm)	Std Pack Qty
Grey	Black	White		h	d	D			
284200022545	284200059945	284200016445	M20	17.2	20.5	25.0-29.0	4.0-11.0	5.5	50
284250022545	284250059945	284250016445	M25	17.2	25.5	30.0-35.0	4.0-13.0	5.7	50
284200122545	284200159945	284200116445	M20	19.0	20.5	25.0-30.0	4.0-11.0	5.5	50
284250122545	284250159945	284250116445	M25	19.0	25.5	30.0-36.0	4.0-13.0	5.7	50



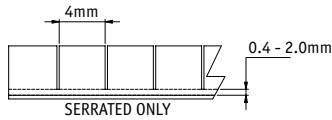
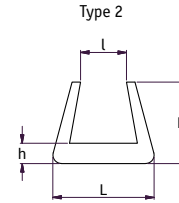
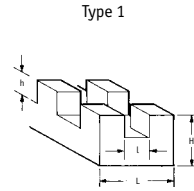
GROMMETS, STRAIN RELIEF AND BLANKING PLUGS

Grommet Strips

SR 1712

Natural Polythene/Nylon, RMS-413

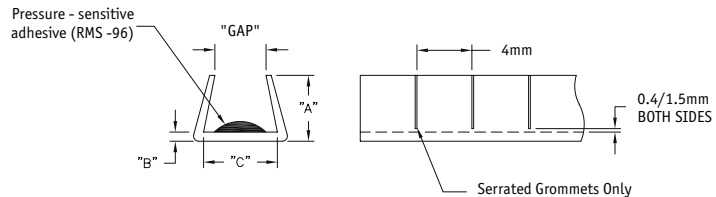
- Protect against damage from sharp panel edges
- Ideal for tight radii in panel cut-outs and holes



Part Number		Type	Material	Dimensions (mm)				Std Pack Qty (m)
Solid Lengths	Serrated			L	l	H	h	
-	49087	1	Polythene	2.20	0.9	2.4	1.8	25
-	49088	1	Polythene	3.80	1.4	4.0	2.5	25
-	49089	1	Polythene	4.50	2.3	4.0	2.5	25
-	49090	1	Polythene	5.60	3.3	4.0	2.5	25
-	49091	1	Polythene	8.30	5.0	5.8	4.0	25
-	49092	1	Polythene	9.80	6.6	6.1	4.3	25
NGSE-1	SGSE-1	2	Nylon	2.40	0.5	3.2	0.8	30
NGSE-2	SGSE-2	2	Nylon	4.40	0.9	4.4	0.8	30
NGSE-2.5	SGSE-2.5	2	Nylon	4.40	1.5	4.4	0.8	30
-	SGSE-3	2	Nylon	6.40	2.7	4.8	1.2	30
NGSE-4	SGSE-4	2	Nylon	6.10	4.2	4.8	1.2	30
NGSE-5	SGSE-5	2	Nylon	8.00	4.8	4.8	1.2	30
PGSE-1	SPGSE-1	2	Polythene (RMS-412)	2.53	0.5	3.2	0.8	30
-	SPGSE-1.5	2	Polythene (RMS-412)	3.20	0.9	4.4	0.8	30
PGSE-2	SPGSE-2	2	Polythene (RMS-412)	5.00	0.6	4.4	0.8	30
PGSE-2.5	SPGSE-2.5	2	Polythene (RMS-412)	4.40	1.5	4.4	0.8	30
PGSE-3	SPGSE-3	2	Polythene (RMS-412)	6.40	2.7	4.8	1.2	30
-	SPGSE-4	2	Polythene (RMS-412)	7.20	4.2	4.8	1.2	30
PGSE-5	SPGSE-5	2	Polythene (RMS-412)	7.20	4.8	4.8	1.2	30

Continuous Grommet Strip with Adhesive

NGSG/SNGSG/PGSG/SPGSG



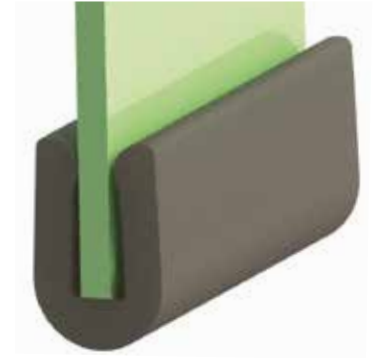
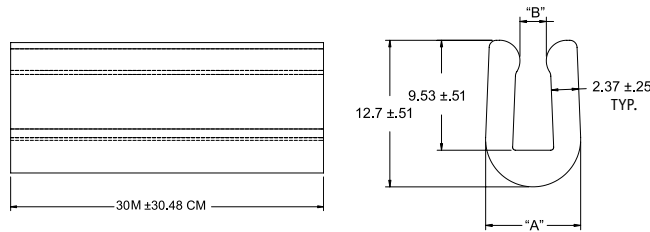
Part Number		Colour	Material	Panel Thickness Range	Dimensions (mm)				Std Pack Qty
Solid Lengths	Serrated Lengths				"GAP"	"A"	"B"	"C"	
NGSG-2	SNGSG-2	Natural	UL94-HB Nylon, RMS-88	0.9 - 1.8	0.9	4.4	0.8	2.8	30M Roll
-	SNGSG-2B	Black	UL94-HB Nylon, RMS-88	0.9 - 1.8	0.9	4.4	0.8	2.8	30M Roll
NGSG-2.5	SNGSG-2.5	Natural	UL94-HB Nylon, RMS-88	1.8 - 2.7	1.5	4.4	0.8	2.8	30M Roll
NGSG-3	SNGSG-3	Natural	UL94-HB Nylon, RMS-88	2.7 - 4.2	2.7	4.8	1.2	4	30M Roll
PGSG-2	SPGSG-2	Natural	Polyethylene, RMS-418	0.9 - 1.8	0.9	4.4	0.8	2.8	30M Roll
PGSG-2B	SPGSG-2B	Black	Polyethylene, RMS-418	0.9 - 1.8	0.9	4.4	0.8	2.8	30M Roll
PGSG-6*	SPGSG-6*	Natural	Polyethylene, RMS-418	0.9 - 1.8	0.9	4.1	0.6	1.5	30M Roll
PGSG-6B*	-	Black	Polyethylene, RMS-418	0.9 - 1.8	0.9	4.1	0.6	1.5	30M Roll
PGSG-2.5	SPGSG-2.5	Natural	Polyethylene, RMS-418	1.8 - 2.7	1.5	4.4	0.8	2.8	30M Roll
PGSG-2.5B	SPGSG-2.5B	Black	Polyethylene, RMS-418	1.8 - 2.7	1.5	4.4	0.8	2.8	30M Roll
-	SPGSG-7*	Natural	Polyethylene, RMS-418	1.8 - 2.7	1.5	4.8	0.9	2.5	30M Roll
PGSG-3	SPGSG-3	Natural	Polyethylene, RMS-418	2.6 - 4.2	2.7	4.8	1.2	4	30M Roll
PGSG-3B	SPGSG-3B	Black	Polyethylene, RMS-418	2.6 - 4.2	2.7	4.8	1.2	4	30M Roll
-	SPGSG-8*	Natural	Polyethylene, RMS-418	2.6 - 4.2	2.7	4.8	0.9	4	30M Roll

*Parts are extra flexible

Rubber Edge Grommet

RG

Black, TPE, RMS-214



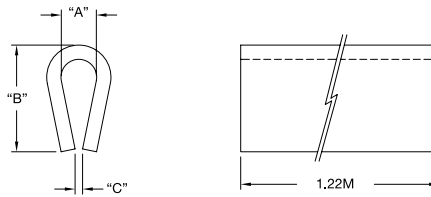
Part Number	Dimensions (mm)			Std Pack Qty
	Panel Thickness	"A"	"B"	
RG-1	1.6	6.74	0.76	30M Roll
RG-2	2.36	7.44	1.52	30M Roll
RG-3	3.18	8.23	2.29	30M Roll

Duro-Strip Channel

DSC

RMS-413, Nylon 6

RMS-21, Nylon 66.6

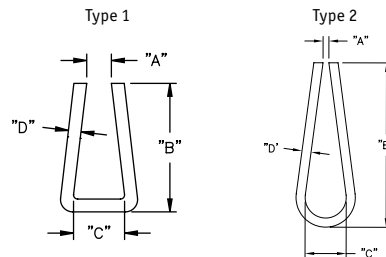


Part Number	Dimensions (mm)				Material	Std Pack Qty
	"A" ± 0.4	"B" ± 0.8	"C"	Panel Thickness		
DSC-5-48	1.6	7.6	0.8	0.8	MDS Filled Nylon, RMS-21	1.22M lengths x 25
DSC-1-48	3.2	9.5	0.5	1.2	RMS-413	1.22M lengths x 25
DSC-2-48	4.8	12.7	0.8	1.2	RMS-413	1.22M lengths x 25
DSC-3-48	6.4	15.9	1.1	1.6	MDS Filled Nylon, RMS-21	1.22M lengths x 25

Channel

CH

White, Polystyrene, RMS-16



Part Number	Type	Dimensions (mm)				Std Pack Qty
		"A"	"B"	"C" Min.	"D"	
CH200X250-48	1	5.1	9.5	6.4	0.8	1.22M lengths x 25
CH15X50-48	1	0.4	11.1	1.3	0.8	1.22M lengths x 25
CH20X141-48	2	0.5	14.3	3.6	0.8	1.22M lengths x 25

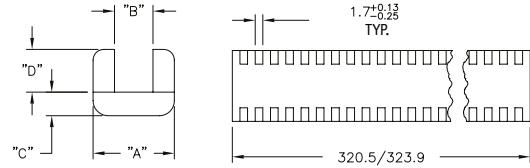
GROMMETS, STRAIN RELIEF AND BLANKING PLUGS

Moulded Grommet Strip

MGS

Natural, Nylon 6/6, RMS-01

- Complies with NASM21266
- Minimum hole \varnothing 25.4mm



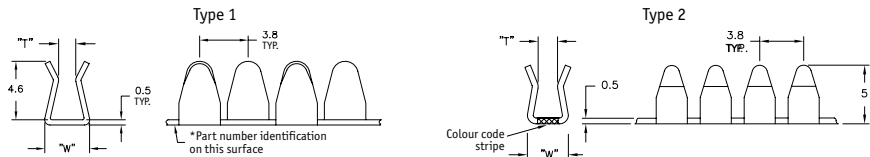
Part Number	Dimensions (mm)					Std Pack Qty (Pieces)
	Panel Thickness	"A" + 0.38/-0.13	"B" + 0.38/-0.13	"C" + 0.38/-0.13	"D" + 0.38/-0.13	
MGS-1-01	0.4 - 1.3	3.8	1.4	1.4	2.5	100
MGS-2-01	1.3 - 2.2	4.4	2.3	1.4	2.5	100
MGS-3-01	2.2 - 3.3	5.6	3.3	1.4	2.5	100
MGS-4-01	3.3 - 4.9	8.3	5.0	1.8	4.1	100
MGS-5-01	4.9 - 6.5	9.8	6.6	1.8	4.3	100
MGS-6-01	6.5 - 8.1	11.3	8.1	1.9	4.6	100
MGS-8-01	9.7 - 13	16.3	13.1	1.9	4.6	50

Metal Continuous Grommet

MCG/MCGF

Black, 304 Stainless Steel, RMS-283; Coating: Nylon 11, RMS-192

- Dielectric Strength: 1000 volts @ 50 Hz
- Operating Temperature Range: -40°C to 140°C
- UL94-V0 flammability rating
- MCGF Series is more flexible than the MCG series because of its design



Part Number	Type	"T" (mm)	"W" (mm)	Color Code Strip, RMS-346	Std Pack Qty
MCG-1N	1	0.7 - 1.1	3.6	Not Applicable	30m reel
MCG-2N	1	1.1 - 1.4	3.6	Not Applicable	30m reel
MCG-3N	1	1.4 - 1.7	3.6	Not Applicable	30m reel
MCG-4N	1	1.7 - 2.3	4.6	Not Applicable	30m reel
MCG-6N	1	2.9 - 3.3	4.6	Not Applicable	30m reel
MCGF-1N	2	0.7 - 1.1	3.3	White	30m reel
MCGF-2N	2	1.1 - 1.4	3.3	Pink	30m reel
MCGF-3N	2	1.4 - 1.7	3.3	Yellow	30m reel

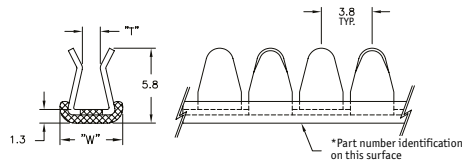
Hand held cutting tool needed, order part number MCGS-1

Metal Continuous Cushioned Grommet

MCCG

Black, 304 Stainless Steel, RMS-283; Coating: Nylon 11, RMS-192,
Cushion: TPE, 60 Shore D, RMS-300

- Dielectric Strength: 1500 volts @ 50 Hz
- Operating Temperature Range: -40°C to 85°C
- UL94-V0 flammability rating



Part Number	"T" Panel Thickness (mm)	"W" (mm)	Std Pack Qty
MCCG-2N	1.1 - 1.4	4.8	30m reel
MCCG-3N	1.4 - 1.7	4.8	30m reel
MCCG-4N	1.7 - 2.3	5.8	30m reel
MCCG-6N	2.9 - 3.3	5.8	30m reel

Hand held cutting tool needed, order part number MCGS-1

Edge Wire Saddle

EWSE

Black Nylon, UL94-V2 Nylon 6/6, RMS-01

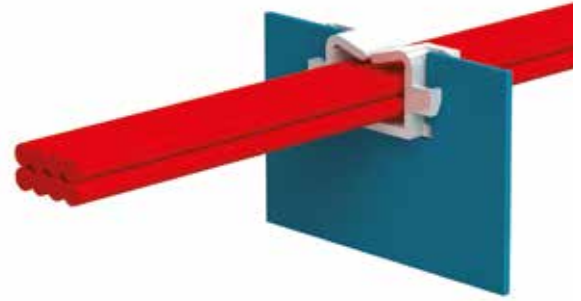


Fig. 1

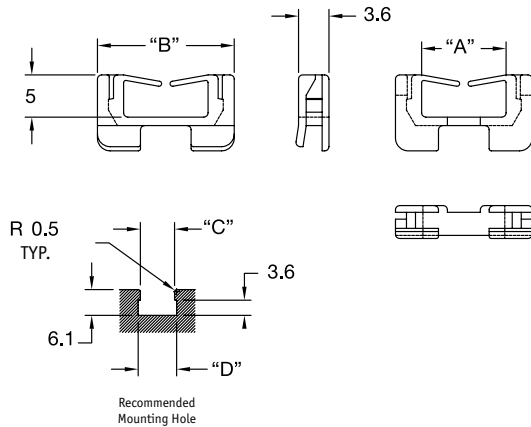
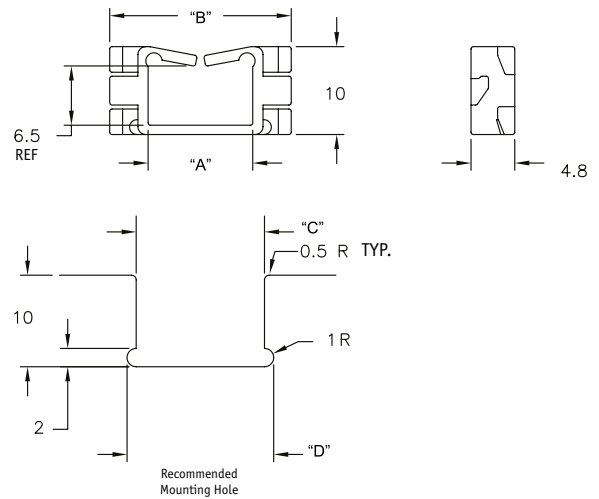


Fig. 2

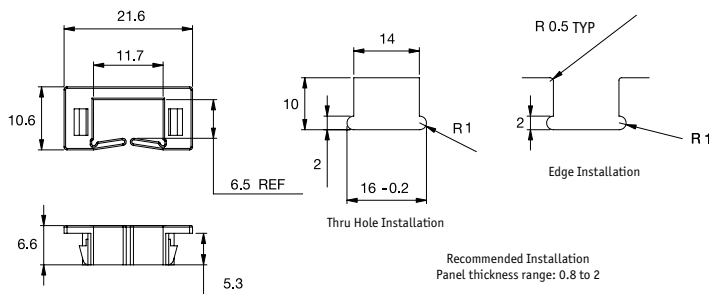
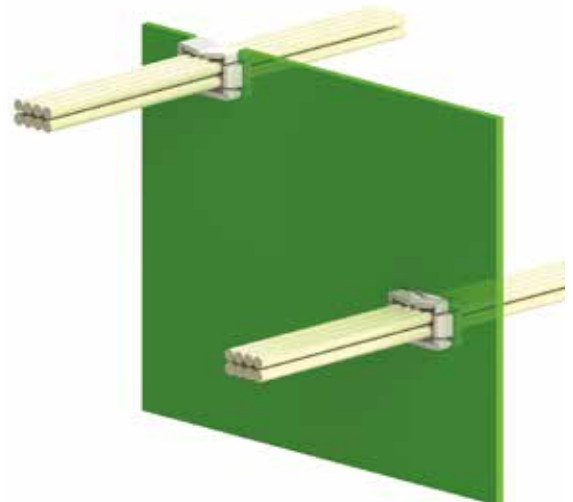


Part Number	Dimensions (mm)				Panel Thickness	Colour	Fig.	Std Pack Qty
	"A"	"B"	"C"	"D"				
EWSE-8.1-01	5.0	11.3	8.1	9.1	0.8 - 1.6	Natural	1	1000
EWSE-12.8-01	10.0	16.2	12.8	13.8	0.8 - 1.6	Natural	1	1000
EWSE-1-01	11.6	20.0	14.0	16.0	0.8 - 1.2	Black	2	1000
EWSE-2-01	11.6	20.0	14.0	16.0	1.2 - 1.6	Natural	2	1000
EWSE-3-01	11.6	20.0	14.0	16.0	1.6 - 2.0	Grey	2	1000

Edge Wire Saddle

EWSE

Natural, Nylon 6/6, RMS-01



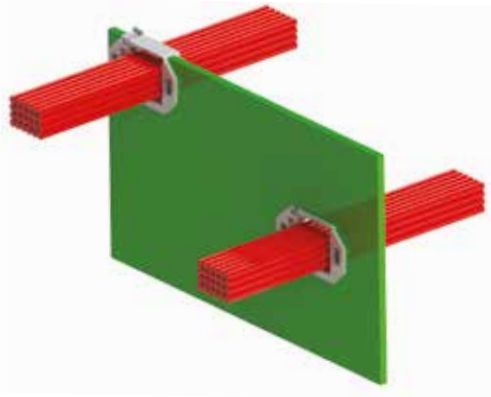
Product Number	Std Pack Qty
EWSJS-1-01	1000

GROMMETS, STRAIN RELIEF AND BLANKING PLUGS

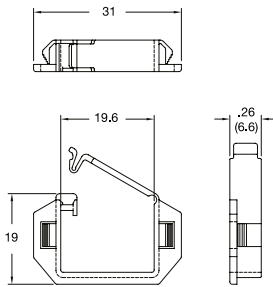
Hinged Edge Wire Saddle

HEWSE

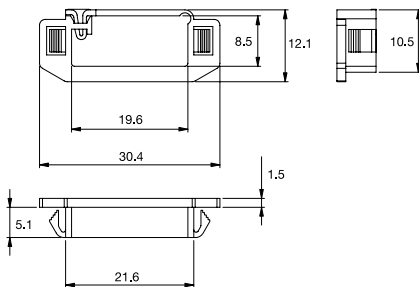
Natural



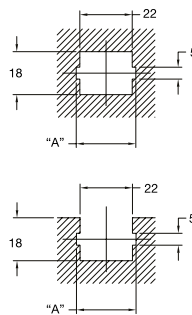
Type 1



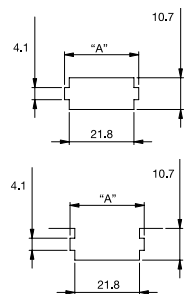
Type 2



Panel mounting details



Panel mounting details



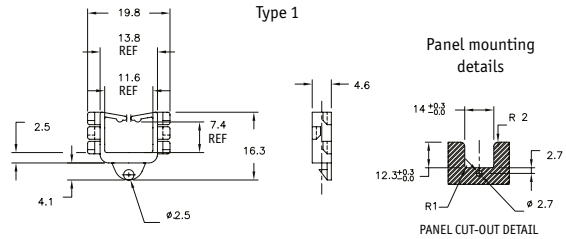
Edge Wire Saddle

LEWSE

Natural



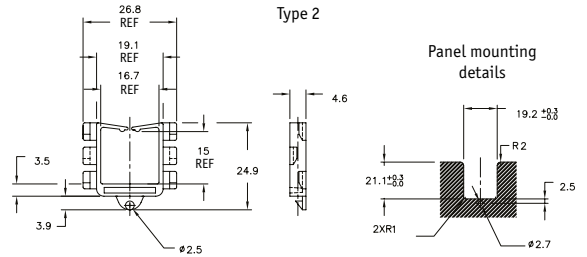
Type 1



Panel mounting details

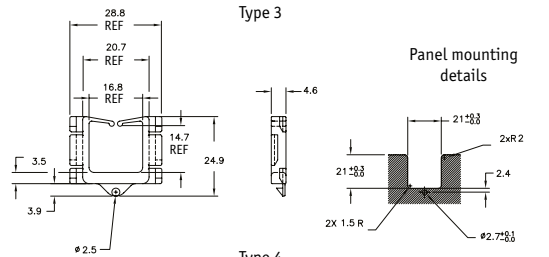
PANEL CUT-OUT DETAIL

Type 2



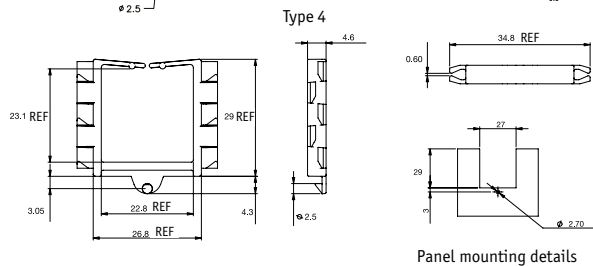
Panel mounting details

Type 3



Panel mounting details

Type 4



Panel mounting details

Part Number		Type	Dimensions (mm)		Std Pack Qty
UL94-V2 Nylon 6/6, RMS-01	UL94-V0 Nylon F.R. 6/6, RMS-19		Panel Thickness	"A"	
HEWSE-22-01	HEWSE-22-19	1	0.5 - 1.6	25	1000
HEWSE-25-01	HEWSE-25-19	2	0.8 - 1.6	25	1000
HEWSE-25-01	HEWSE-25-19	2	2.0	26	1000

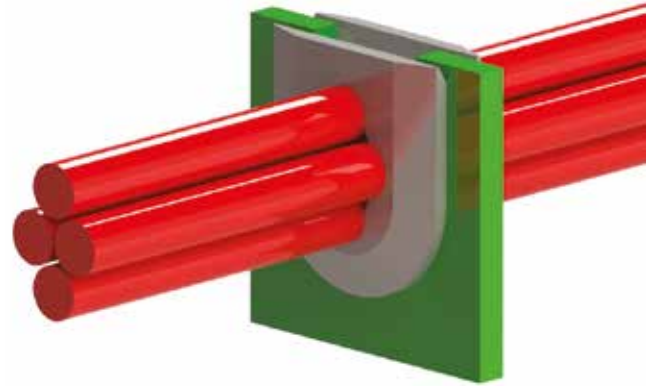
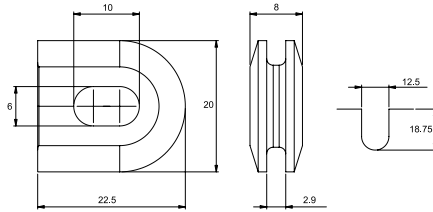
Part Number		Type	Panel Thickness (mm)	Std Pack Qty
Nylon 6/6, RMS-01	UL94-V0 Nylon 6/6, RMS-19			
LEWSE-14-01	LEWSE-14-19	1	0.8-1.6	1000
LEWSE-19-01	LEWSE-19-19	2	0.8-1.6	1000
LEWSE-21-01	-	3	0.8-1.6	1000
LEWSE-27-01	LEWSE-27-19	4	0.8-1.6	1000

Cable Grommet

CGB

Black Silicone Rubber 65 Shore A, RMS-379

- Continuous working temperature: 180 °C
- Dimensions reflect product in an installed state



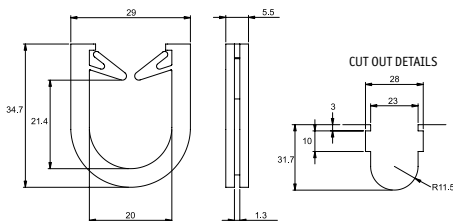
Part Number	Max Panel Thickness (mm)	Std Pack Qty
CGB-1	2.8	1000

Cable Grommet

CGC

Natural UL94-V2 Nylon 6/6, RMS-01

- Continuous working temperature: 80 °C
- Dimensions reflect product in an installed state



Part Number	Panel Thickness (mm)	Std Pack Qty
CGC-1-01	1.2	250

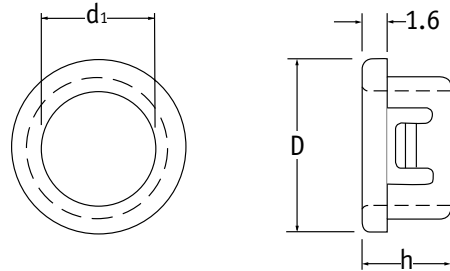
GROMMETS, STRAIN RELIEF AND BLANKING PLUGS

Snap-Fit Bushes

SR 1706

Black Nylon - (Heat Stabilised to UL94-V2)

- Effortless snap-fit into panels
- Easy installation, no tools required
- Protect against rough panel hole edges



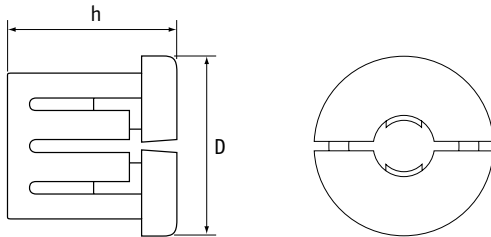
Part Number	Panel Dimensions (mm)		Part Dimensions (mm)			Std Pack Qty
	Mounting Hole Dia	Max Panel Thickness	d1	D	h	
465903	4.7	1.6	3.2	6.4	5.9	1000
110492	6.6	1.6	3.2	8.0	8.0	1000
465905	7.1	1.6	5.5	8.7	5.9	1000
PGSB-3	7.9	1.6	6.3	9.5	5.9	1000
PGSB-2	8.0	1.6	4.8	9.5	8.0	1000
465907	8.7	1.6	5.5	10.3	6.4	1000
465908	9.5	1.6	6.3	11.1	6.4	1000
110494	9.5	3.2	4.8	11.9	10.3	1000
PGSB-5	9.5	3.2	6.4	11.9	10.3	1000
465909	10.3	1.6	7.1	11.9	6.4	1000
465910	11.1	1.6	7.9	12.7	6.4	1000
PGSB-6	11.0	3.2	6.4	13.5	10.3	1000
PGSB-7	11.0	3.2	8.0	13.5	10.3	1000
PGSB-8	11.0	3.2	6.2	13.5	10.3	1000
PGSB-9	11.9	1.6	8.6	13.5	6.4	1000
PGSB-12	12.7	1.6	9.5	14.3	6.4	1000
110499	12.7	3.2	6.4	14.7	10.3	1000
110500	12.7	3.2	8.0	14.7	10.3	1000
110501	12.7	3.2	9.5	14.7	10.3	1000
465893	12.7	6.4	9.9	14.7	14.3	1000
PGSB-13	13.5	1.6	10.3	15.1	6.4	1000
PGSB-14	14.3	3.2	8.0	16.7	10.3	1000
110504	14.3	3.2	11.0	16.7	10.3	1000
PGSB-18	15.9	3.2	11.0	18.2	10.3	1000
110507	15.9	3.2	12.7	18.2	10.3	1000
PGSB-20	17.5	3.2	12.7	19.8	10.3	1000
PGSB-21	17.5	3.2	14.3	19.8	10.3	1000
PGSB-24	19.1	1.6	15.9	21.0	6.4	1000
PGSB-23	19.0	3.2	14.3	21.4	10.3	1000
110513	19.0	3.2	16.0	21.4	10.3	1000
PGSB-25	19.8	1.6	15.9	21.8	6.4	1000
110514	20.6	3.2	14.3	22.6	10.3	1000

Part Number	Panel Dimensions (mm)		Panel Dimensions (mm)			Std Pack Qty
	Mounting Hole Dia	Max Panel Thickness	d1	D	h	
110515	20.6	3.2	16.0	22.6	10.3	1000
PGSB-30	22.2	1.6	19.0	23.8	6.4	1000
465894	22.2	6.4	17.5	24.2	14.3	1000
PGSB-29	22.2	3.2	17.5	24.2	11.5	1000
465919	25.4	1.6	22.3	27.0	6.4	1000
110522	25.4	3.2	19.0	28.6	11.5	1000
465895	25.4	6.4	19.4	28.6	14.3	1000
PGSB-32	27.8	3.2	20.5	30.9	11.5	1000
PGSB-33	27.8	3.2	22.0	30.9	11.5	1000
PGSB-34	27.8	3.2	24.0	30.9	11.5	1000
465896	27.8 - 28.6	6.4	23.8	30.9	14.3	1000
465898	31.8	6.4	25.4	33.2	14.3	1000
110526	30.2	3.2	24.0	33.3	11.5	1000
465897	30.2	6.4	23.8	33.3	14.3	1000
PGSB-35	32.0	3.2	24.0	34.5	11.5	1000
PGSB-36	34.9	3.2	25.4	37.3	11.5	1000
465899	34.9	6.4	25.4	38.1	14.3	1000
PGSB-37	38.0	3.2	27.0	40.9	11.5	1000
PGSB-38	38.0	3.2	28.5	40.9	11.5	1000
PGSB-39	38.0	3.2	33.3	40.9	11.5	1000
465900	38.1	6.4	33.3	41.2	14.3	500
465901	44.5	6.4	34.9	47.6	14.3	500
PGSB-40	45.0	3.2	35.0	47.6	11.5	1000
465902	50.8	6.4	41.3	54.0	14.3	500
PGSB-41	51.0	3.2	41.0	54.0	11.5	1000
465884	53.1	6.4	46.0	59.7	18.3	500
PGSB-43	57.2	6.4	46.0	61.1	18.3	500
465886	63.5	6.4	51.0	67.5	18.1	500
465887	76.2	6.4	61.9	80.2	18.1	500
465888	85.7	6.4	71.4	92.9	18.3	500
465889	88.9	6.4	74.6	92.8	18.1	250
465890	101.6	6.4	87.3	105.6	18.1	250

Snub Bushes

SR 1724

Black Nylon 6.6 - (Heat Stabilised to UL94-V2)



Part Number	Panel Dimensions (mm)			Part Dimensions (mm)		Std Pack Qty
	Mounting Hole Dia	Max Panel Thickness	Cable Size (mm)	D	h	
466908	9.5	3.2	3.2	11.7	10.7	1000
SB-1	9.5	3.2	3.8	11.4	12.1	1000
466909	11.1	3.2	4.8	11.9	11.2	1000
SB-2	11.1	3.2	5.6	14	12.1	1000
SB-3	12.7	3.2	7.1	16	12.1	1000
466910	12.7	6.4	3.2	14.2	11.2	1000

Glossy Plugs

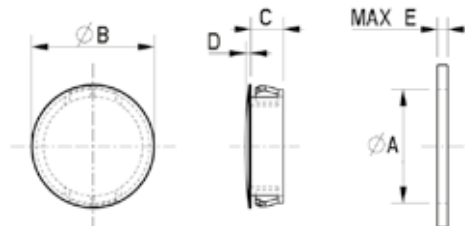
SR 1740

Black Nylon 66 (PA 6.6)

- Closes unused holes in panels up to 3.2mm thickness
- Clips beneath the head assure secure coverage of the hole
- Quick and easy assembly



Part Number	Dimensions (mm)				Max Panel Thickness (E)	Std Pack Qty
	A	B	C	D		
168002022002	6.4	7.9	6.4	1.6	1.6	100
168002522002	8	9.5	6.4	1.6	1.6	100
168003022002	9.5	12	8.7	1.6	3.2	100
168003522002	11	13.5	8.7	1.6	3.2	100
168004022002	12.7	14.6	8.7	1.6	3.2	100
168004522002	14.3	16.7	8.7	1.6	3.2	100
168005022002	15.9	18.2	8.7	1.6	3.2	100
168005522002	17.5	20	8.7	1.6	3.2	100
168006022002	19	23.2	8.7	1.6	3.2	100
168006522002	20.6	22.6	8.7	1.6	3.2	100
168007022002	22.2	25.8	9.9	1.6	3.2	100
168007522002	25.5	30.5	9.9	1.6	3.2	100
168008022002	28.3	31	9.9	1.6	3.2	100
168008522002	30.1	33.3	12.7	1.6	3.2	50
168009022002	32	34.9	9.9	1.6	3.2	50
168009522002	35	38	9.9	1.6	3.2	50
168010022002	38	42.7	9.9	1.6	3.2	50
168011022002	45	48.4	9.9	1.6	3.2	50
168012022002	51	55	9.9	1.6	3.2	50
466924	50.8	54.8	14.3	1.6	6.4	100
466941	50.8	54.8	11.5	1.6	3.2	100

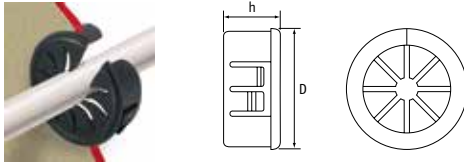


GROMMETS, STRAIN RELIEF AND BLANKING PLUGS

Open/Closed Universal Bushes

SR 1737

Black Nylon 6.6 - (Heat Stabilised to UL94-V2)

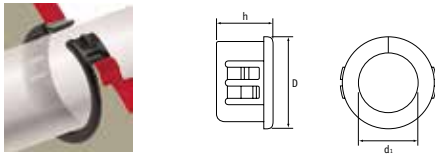


Part Number	Panel Dimensions (mm)		Part Dimensions (mm)			Std Pack Qty
	Mounting Hole Dia	Max Panel Thickness	Max I.D.	D	h	
466888	15.9	3.2	11.1	18.2	10.3	1000
466889	19.0	3.2	12.7	20.6	10.3	500
466890	22.2	3.2	14.3	23.4	10.3	500
466891	25.4	3.2	19.0	27.0	10.3	500
466892	27.8	3.2	20.6	30.2	10.3	100
466893	31.8	3.2	23.8	37.3	10.3	100
466894	34.9	3.2	25.4	37.3	10.3	100
466895	38.1	3.2	26.9	40.1	10.7	100

Open/Closed Bushes

SR 1738

Black Nylon 6.6 - (Heat Stabilised to UL94-V2)



Part Number	Part Dimensions (mm)					Std Pack Qty
	Mounting Hole Dia	Max. Panel Thickness	D	d1	h	
PGSA-0407A*	7.0	1.0	10.4	4.8	5.0	1000
PGSA-1013A*	13.0	1.5	16.2	9.2	5.3	500
PGSA-1316A*	16.0	1.4	19.4	12.2	5.4	500
PGSA-1519A*	19.0	1.5	22.7	14.3	5.7	500
PGSA-1822A*	22.0	1.6	25.5	17.6	5.6	500
PGSA-2024A1*	24.0	1.2	27.0	19.5	5.3	500
PGSA-2024A*	24.0	1.6	27.0	19.5	5.3	500
PGSA-2327A*	27.1	1.0	35.1	22.9	6.0	200
PGSA-2529A*	29.0	1.1	35.1	24.5	7.0	200
PGSB-0609A*	9.5	1.7	11.4	6.6	6.5	1000
PGSB-1A*	9.5	3.2	10.7	6.7	9.9	1000
PGSB-2A*	11.1	3.2	12.7	7.9	10.3	1000
PGSB-1013A*	13.0	3.5	14.9	9.0	10.5	500
PGSB-3A*	14.3	3.2	16.3	9.9	10.3	500
466900	15.9	3.2	17.5	11.5	10.3	500
PGSB-1316A*	16.0	3.5	18.0	10.5	10.5	500
PGSB-1216A*	16.5	3.3	18.6	12.3	10.0	500
466901	19.0	3.2	20.2	13.9	10.3	500
PGSB-1519A*	19.0	3.3	20.6	14.5	11.0	500
PGSB-1822A*	22.0	3.5	24.8	17.3	11.5	200
466902	22.2	3.2	23.4	17.7	10.3	500
PGSB-9A*	25.0	3.0	26.4	20.4	10.3	200
PGSB-4A*	25.4	3.2	26.6	20.6	10.3	200
PGSB-5A*	27.8	3.2	29.4	22.2	10.3	200
PGSB-6A*	31.8	3.2	34.1	26.6	10.3	200
PGSB-7A*	34.9	3.2	37.3	29.7	10.3	200
PGSB-8A*	38.1	3.2	40.1	31.7	10.7	200

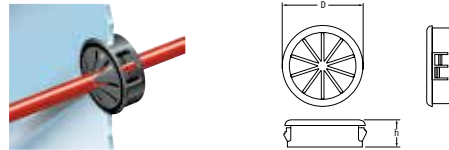
* UL #E320906

Universal Bushes

SR 1707

Black Nylon

- Effortless snap-fit into panels
- Protect against rough hole edges
- Ideal for wire, cable and irregular-shaped items



Part Number	Dimensions (mm)					Std Pack Qty
	Mounting Hole Dia.	Max Panel Thickness	Max. Cable Bundle	D	h	
PGSD-1*	12.7	1.6	7.9	15.2	6.4	500
PGSD-5*	12.7	3.2	7.9	15.2	9.8	500
466847	12.7	6.4	7.6	15.2	13.8	1000
PGSD-2*	15.9	1.6	11.1	18.5	6.4	500
PGSD-6*	15.9	3.2	11.1	18.5	10.3	500
466848	15.9	6.4	11.1	18.3	14.0	1000
466849	19.0	6.4	12.7	21.4	14.0	1000
PGSD-3*	19.5	1.6	12.7	21.4	6.4	200
PGSD-7*	19.5	3.2	12.7	21.4	9.9	200
110536	20.6	3.2	12.7	22.6	9.9	1000
PGSD-4*	22.2	1.6	14.2	23.8	6.4	200
PGSD-8*	22.2	3.2	14.2	23.8	11.5	200
466850	22.2	6.4	14.3	23.8	14.0	1000
PGSD-9*	25.4	3.2	19.1	27.0	11.5	200
110539	27.8	3.2	20.6	29.3	11.5	1000
466852	27.8	6.4	20.6	29.4	14.0	1000
PGSD-10*	34.9	3.2	25.4	37.8	11.5	100
466853	34.9	6.4	25.4	37.8	14.3	500
PGSD-11*	38.1	3.2	27.0	40.9	11.4	100
466854	38.1	6.4	26.9	40.9	14.3	500

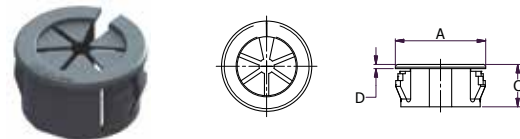
* UL #E320906

Open Universal Bushing

PGSC

Black UL94-V2 Nylon 6/6

- Easy to push in design locks into place at common panel thicknesses
- Open design allows bushing to be assembled into holes that already contain a bundle
- Adjust to accept various diameters and shapes



Part Number	Compatible Mounting Hole Range (mm)	Max. Panel Thickness Range (mm)	Maximum Internal Diameter (mm)	Dimensions (mm)			Std Pack Qty
				A	C	D	
PGSC-1319A	19.0-19.1	0.8-3.0	12.7	21.8	9.9	1.0	500
PGSC-1422A	22.2-22.4	0.8-3.0	14.3	23.8	11.5	1.0	200
PGSC-1926A	25.4-25.5	0.8-3.0	19.0	27.0	11.5	1.0	200
PGSC-2128A	27.8-28.0	0.8-3.0	20.7	29.5	11.5	1.0	200

RELAX – WE HAVE WHAT YOU NEED

▶ Over **35,000** products online
and 1 billion parts in stock

▶ Easy ordering,
by phone or **online**

OVER
1,000
NEW
PRODUCTS



OUR PROMISE TO YOU:

▶ **FREE SAMPLES** – try before you buy

▶ **SMALL PACKS** – available in the quantities you need

▶ **RELIABLE DELIVERY** – same day shipping from stock

TEL: 0845 758 5070 • FAX: 0845 609 0049
www.essentracomponents.co.uk



HERE ARE JUST A FEW OF OUR NEW PRODUCTS

AUTOMATION & CONTROL

Pages 330-343



HANDLES & KNOBS

Pages 526-599



CABLE MANAGEMENT

Pages 276-329



LOCKS

Pages 344-487



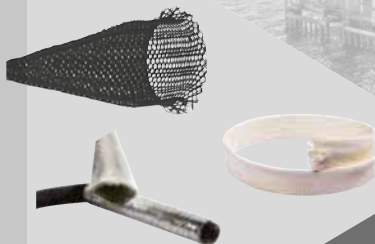
CASTORS

Pages 600-651



HYDRAULICS & PNEUMATICS

Pages 62-83



OVER 35,000 PRODUCTS
ONLINE. VISIT OUR WEBSITE!

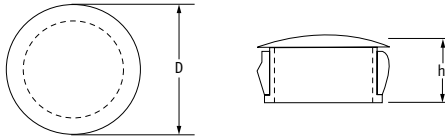
www.essentracomponents.co.uk

Domed Blanking Plugs

SR 1086

Black or White Nylon - (Heat Stabilised to UL94-V2)

- Snap into panel thicknesses of 1.6 to 3.2mm
- Ideal for closing panel cavities from 4.8 to 51mm in diameter



Part Number		Panel Dimensions (mm)		Part Dimensions (mm)		Std Pack Qty
Black	White	Mounting Hole Dia.	Max. Panel Thickness	D	h	
460006	462727	4.8	1.6	6.4	5.9	1000
PGM-4	-	4.8	1.7	6.0	5.2	1000
460007	462728	6.4	1.6	8.0	8.0	1000
PGM-6	-	6.4	1.7	7.6	5.6	1000
PGM-7	-	7.1	1.6	11.0	7.0	1000
PGM-8	-	7.8	1.6	9.5	6.0	1000
460008	462729	8.0	1.6	9.5	8.0	1000
460009	462730	9.5	3.2	12.0	10.0	1000
PGM-9	-	9.6	1.2	13.0	6.5	1000
PGM-10	-	9.8	1.4	13.0	6.0	1000
460010	462731	11.1	3.2	13.5	10.3	1000
PGM-3	-	11.9	1.6	13.5	6.4	1000
PGM-5	-	12.7	1.6	14.3	6.4	1000
460011	462732	12.7	3.2	14.6	10.3	1000
466855	466871	12.7	6.4	14.7	14.3	1000
PGM-13	-	12.9	2.1	17.0	8.0	1000
PGM-11	-	13.5	1.6	15.1	6.4	500
460012	461285	14.3	3.2	16.7	10.3	1000
PGM-12	-	15.9	1.6	18.2	6.4	500
460013	462733	15.9	3.2	18.2	10.3	1000
466856	-	15.9	6.4	18.2	14.3	1000
PGM-16	-	16.0	2.0	20.0	8.0	500
466867	-	16.0	2.5	18.5	10.3	1000
PGM-28	462734	17.5	3.2	20.0	10.3	1000
PGM-19	-	19.0	3.2	23.5	10.5	500
460015	462735	19.0	3.2	23.2	10.3	1000
PGM-14	-	19.1	1.6	21.4	6.4	500
466857	466873	19.1	6.4	23.4	14.3	1000

Part Number		Panel Dimensions (mm)		Part Dimensions (mm)		Std Pack Qty
Black	White	Mounting Hole Dia.	Max. Panel Thickness	D	h	
PGM-15	-	19.8	1.6	22.6	6.4	500
466868	466884	20.0	2.5	22.6	10.3	1000
460016	462736	20.6	3.2	22.6	10.3	1000
PGM-22	-	22.0	3.0	26.0	9.6	500
PGM-17	-	22.2	1.6	24.6	6.4	500
-	462737	22.2	3.2	25.8	11.5	1000
PGM-29	-	22.2	3.2	28.6	11.5	200
466858	466874	22.2	6.4	25.8	14.3	1000
466869	466885	25.0	2.5	29.8	11.5	1000
460018	462738	25.4	3.2	30.5	11.5	1000
PGM-25	-	25.5	3.2	28.0	12.7	200
PGM-32	462739	27.8	3.2	31.0	11.5	1000
466860	-	27.8-28.6	6.4	30.9	14.3	1000
460020	462740	30.0	3.2	33.3	11.5	1000
466861	466877	30.1	6.4	33.3	14.3	600
PGM-30	-	30.6	3.2	34.0	13.0	200
466862	-	31.7	6.4	34.9	14.3	1000
466870	-	32.0	2.5	35.3	11.5	1000
PGM-18	462741	32.0	3.2	34.9	11.5	1000
466863	466879	34.9	6.4	38.1	14.3	1000
PGM-20	462742	35.0	3.2	38.0	11.5	1000
PGM-31	462743	38.0	3.2	42.7	11.5	1000
466864	466880	38.1	6.4	42.4	14.3	1000
466865	466881	44.5	6.4	48.4	14.3	1000
PGM-21	462744	45.0	3.2	48.4	11.5	500
PGM-23	-	50.8	3.2	55.1	11.9	100
466866	466882	50.8	6.4	55.1	14.3	1000
460025	462745	51.0	3.2	55.0	11.5	500

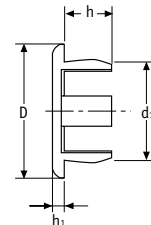
Part Number	Dimensions (mm)				Panel Thickness Range	Std Pack Qty
	D	d1	h	h1		
161004015402	7.0	4.0	6.0	1.1	0.8 - 3.8	1000
161006015402	10.4	6.0	6.0	1.1	0.8 - 3.8	1000
161006415402	10.4	6.4	6.0	1.1	0.8 - 3.8	1000
161008015402	12.0	8.0	6.0	1.2	0.8 - 3.8	1000
161009515402	13.5	9.5	6.0	1.2	0.8 - 3.8	1000
161010015402	14.0	10.0	6.0	1.2	0.8 - 3.8	1000
161012015402	16.0	12.0	6.0	1.3	0.8 - 3.8	1000
161012715402	17.1	12.7	6.0	1.3	0.8 - 3.8	500
161014015402	18.7	14.0	6.0	1.4	0.8 - 3.8	500
161014315402	18.7	14.3	6.0	1.4	0.8 - 3.8	500
161015915402	20.4	15.9	6.0	1.4	0.8 - 3.8	500
161018015402	22.8	18.0	6.0	1.5	0.8 - 3.8	500
161019115402	24.0	19.1	6.0	1.5	0.8 - 3.8	250
161020015402	24.8	20.0	6.0	1.5	0.8 - 3.8	250
161022215402	27.4	22.2	6.0	1.6	0.8 - 3.8	250
161024015402	29.2	24.0	6.0	1.6	0.8 - 3.8	250
161025415402	30.6	25.4	6.0	1.6	0.8 - 3.8	250

Sheet Cover Caps

SR 2041

Beige Nylon

- Designed to seal openings in sheet material
- Other colours available online



GROMMETS, STRAIN RELIEF AND BLANKING PLUGS

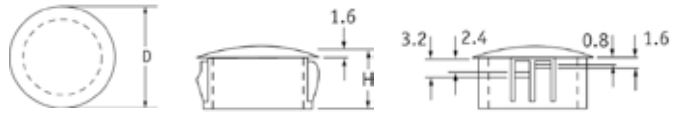
Vent Plugs

SR 1708

Black Nylon



- Provide ventilation access for cooling fans, moving parts and heat-emitting components



Part Number	Panel Dimensions (mm)		Part Dimensions (mm)		Std Pack Qty
	Mounting Hole Dia	Max Panel Thickness	D	H	
110490	22.2	3.2	25.8	11.5	1000
110491	25.4	3.2	30.5	11.5	1000

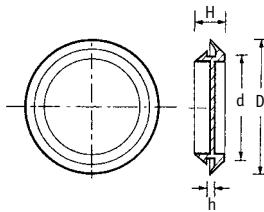
Snap-Fit Blanking Plugs

SR 1760

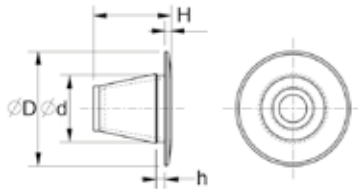
LDPE

- Type 1 - Ideal for metal panels up to 2.5mm thick
- Snap neatly into position
- Locks tightly, especially in thin sheet
- For protection and covering purposes

Type 1 - Natural



Type 2 - Black



Part Number	Dimensions (mm)				Type	Std Pack Qty
	D	d	h	H		
10923	20.0	9.5	3.0	8.5	1	5000
12540	24.0	12.5	3.0	9.8	1	5000
12975	27.0	14.0	3.0	10.0	1	5000
12541	27.5	16.0	3.0	9.8	1	5000
12543	31.5	20.0	3.0	9.8	1	5000
12544	33.5	22.0	3.0	9.8	1	5000
12545	36.5	25.0	3.0	9.8	1	3000
12546	39.5	28.0	3.0	9.8	1	2500
12976	41.0	31.5	3.0	9.2	1	2000
12547	49.5	38.0	3.0	9.8	1	1500
12631	59.0	47.5	3.0	9.8	1	1500
12548	61.5	50.0	3.0	9.8	1	1000
12632	62.5	51.0	3.0	9.5	1	1000
010008022003	15	8	0.5-1.2	12	2	1000
010010022003	17	10	0.5-1.2	12	2	500

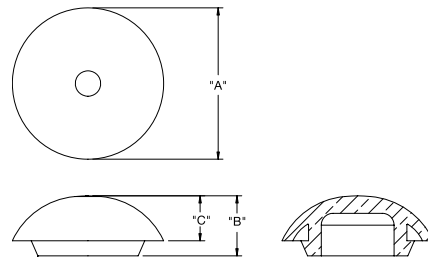
Liquid Tight Plug IP67

LTP

UL94-V0 Silicone Rubber, RMS-398

Black

- Offers protection to IP 67



Part Number	Dimensions (mm)				Std Pack Qty
	Mounting Hole Ø	"A"	"B"	"C"	
LTP-4	12.7	23.4	11.4	7.3	1000
LTP-7	15.88	27.6	11.3	8.1	500
LTP-5	19.1	29.2	13	8.9	500
LTP-1	22.23	32	12.7	9.5	1000
LTP-6	25.4	35.8	14.2	10.1	200
LTP-2	27.76	39.2	13.7	10.5	500
LTP-3	34.93	46.2	14.7	11	200

GROMMETS, STRAIN RELIEF AND BLANKING PLUGS

Part Number		Dimensions (mm)					Std Pack Qty
SR 1750	SR 1751	D	d1	d2	h	H	
PVC	TPR						
10860	15150	9.3	9.3	4.7	1.6	4.6	10000
10825	15151	9.5	9.5	6.4	1.6	5.0	10000
10832	-	14.5	10.6	8.0	0.8	4.0	10000
10233	-	14.5	10.6	8.0	1.6	4.5	10000
10488	-	15.0	12.4	9.5	1.6	6.6	10000
10912	15155	17.7	12.8	11.2	1.6	6.2	10000
10768	-	17.0	15.5	11.5	1.6	7.0	5000
15511	-	17.5	15.9	11.9	1.2	7.1	10000
50680	-	19.0	13.1	12.0	0.8	6.5	10000
10502	15157	18.7	15.5	12.7	1.6	5.6	5000
11321	15158	20.0	18.4	14.9	1.3	7.0	10000
10213	15159†	22.0	19.0	15.5	1.6	7.5	5000
40043*	-	19.0	19.0	15.9	1.6	7.1	10000
12914	-	20.0	18.5	16.3	1.3	7.0	5000
10678	15160	25.0	22.0	19.0	1.6	6.5	5000
10499	15161	25.0	22.0	20.0	1.6	6.5	5000
11152	15162	28.5	26.7	26.7	2.4	8.2	3000
10902	-	28.5	27.0	22.5	1.6	7.5	3000
11027	15164	30.0	27.5	24.5	2.4	8.7	2000
10705	15166	32.0	28.3	25.4	1.6	9.0	3000
11148	15165	32.0	28.3	25.4	2.4	9.0	3000
11323	-	38.5	28.5	25.0	0.8	4.6	3000
11281	15170	38.2	35.4	32.0	3.1	7.15	2000
11239	-	38.2	35.4	31.5	0.8	7.0	2000
11059	15168	38.2	35.4	31.5	1.6	7.5	2000
10877	15171	43.7	43.0	38.2	1.6	8.2	1500
10320	15172	57.5	52.6	51.5	1.6	12.4	500

* Solid style, no recess on blind side.
† packed in 1,000

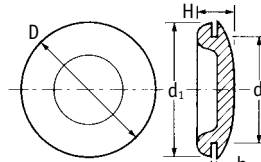
Blanking Plugs

SR 1750/1751

SR 1750 Black PVC

SR 1751 Black TPR

- Ideal for metal panels
- Acid-resistant
- TPR withstands temperatures between -40°C and 135°C
- PVC withstands temperatures up to 50°C



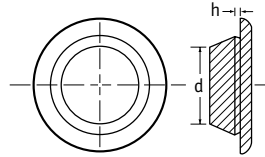
Body Plugs

SR 1765

Black TPR

- Quick to fit
- Each size covers a range of panel thicknesses
- Withstand temperatures between -40°C and 135°C

Part Number	Dimensions (mm)		Std Pack Qty
	Panel Hole Size d	Panel Thickness h	
16230	10.0	0.8-2.0	5000
16231	12.0	0.8-2.0	5000
16232	14.0	0.8-2.0	5000
16233	16.0	0.8-2.0	5000
16234	18.0	0.8-2.0	2500
16235	20.0	0.8-2.0	2500
16236	22.0	0.8-2.0	2500
16237	25.0	0.8-2.0	3000
16238	30.0	0.8-2.0	2000
10517	45.0	0.8-2.0	1000



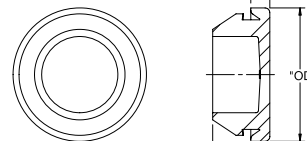
Body Plugs IP67

BP

Black UL94-HB TPE

- Offers protection to IP 67 at maximum panel thickness

Part Number	Panel Hole Ø Ref.	Panel Thickness	"OD"	"T"	"C"	Material	Std Pack Qty
BP-3	22	1.6 - 3	28	12	4	RMS-168	1000
BP-4	26.5	0.8 - 2	32.5	12	4	RMS-168	1000

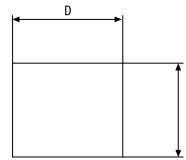


GROMMETS, STRAIN RELIEF AND BLANKING PLUGS

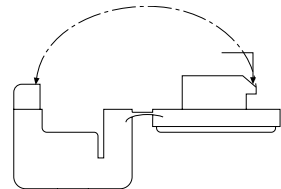
Self-Lock Strain Relief Bushes

SR 1742

Nylon 6.6 - (Heat Stabilised to UL94-V2)



Mounting Hole



Locking Tab

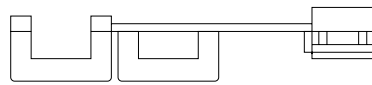
Part Number		UL/CSA Description	Fits Cable		Hole Size (mm)		Max Panel Thickness (mm)	Std Pack Qty
Black	White		Size (mm)	Shape	D	L1		
465701	-	ST-100N	3.0 x 5.6 - 4.1 x 7.6	Flat	11.5	13.0	2.5	500
-	465704	ST-101N	5.6 - 7.4	Round	11.5	13.0	2.5	500
465707	-	ST-201N	7.4 - 9.1	Round	17.5	17.5	4.0	500
465711	-	ST-301N	9.0 - 10.6	Round	17.5	17.5	4.0	500

Split Panel Strain Relief Bushes

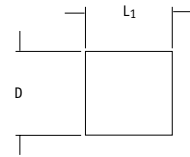
SR 1744

Nylon 6.6 - (Heat Stabilised to UL94-V2)

- Securely anchors, insulates, and protects cables when mounted onto a split panel
- Protect against the forces of pull, push, or twist and are suitable for round or flat cables



Wire Locking Ratchet



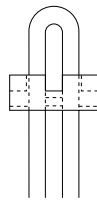
Mounting Hole Split Chassis

Part Number	Colour	UL/CSA Description	Cable Diameter (mm)	Max Panel Thickness (mm)	Hole Size (mm)		Std Pack Qty
					D	L1	
465714	Black	SR 8R-200	6.4 - 15.2	2.5	22.2	22.2	500
465715	White	SR 8R-201	6.4 - 15.2	2.5	22.2	22.2	500

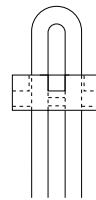
Non-Slip Strain Relief Bushes

SR 1745

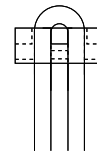
Nylon 6.6 - (Heat Stabilised to UL94-V2)



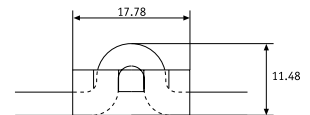
Loop wire through



Flip hinge pin through wire



Pull wire tight



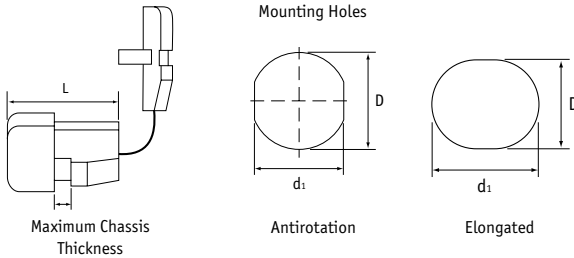
Snap wire straight

Part Number	Colour	UL/CSA Description	Cable Diameter (mm)	Std Pack Qty
465716	Black	ISR-14-27	3.8 x 7.1	1000

Straight Strain Relief Bushes

SR 1730

Nylon 6.6 - (Heat Stabilised to UL94-V2)



Part Number		Fits Cable		Dimensions (mm)			Max. Panel Thickness	Std Pack Qty
Black	White	Shape	Size (mm)	D	d1	L		
497648	-	Flat	2.3x4.5 - 2.8x5.3	9.5	8.7	10.3	0.5 - 1.6	100
497651	-	Flat	2.3x4.5 - 2.8x5.3	9.5	8.7	10.3	1.8 - 3.2	100
465718	-	Flat	2.3x4.5-2.8x5.3	9.5	8.7	10.3	1.6	1000
465720	-	Flat	2.3x4.5-2.8x5.3	9.5	8.7	10.3	3.2	1000
497646	-	Flat	3.0x5.6	11	9.9	10.3	1.9 - 2.5	100
465724	-	Flat	3x5.6	11	9.9	10.3	1.2	1000
497653	-	Flat	3.0x5.6	11.2	9.9	10.3	1.0 - 1.6	100
497652	-	Flat	3.0x7.1 - 3.8x7.6	12.7	11.8	10.3	0.5 - 1.6	100
497658	-	Flat	3.0x7.1 - 3.8x7.6	12.7	11.8	10.3	1.8 - 2.5	100
497655	-	Flat	5.0x10.4	14.3	12.9	15.2	0.5 - 1.6	100
497640	-	Flat	5.0x10.4	14.3	12.9	15.2	1.8 - 3.5	100
465766	-	Flat	3x7.1-3.8x7.6	12.7-13.1	11.8	13.8	1.2	500
465736	-	Flat	3x7.1-3.8x7.6	12.7-13.1	10.3	10.3	1.6	500
465722	-	Round	3-4.7	9.5	8.4	10.3	1.6	1000
465768	-	Round	7.6	12.7	11.8	11	2.3	500
497641	-	Round	7.6	12.7	11.8	11	1.8 - 2.3	100
497637	-	Round	6.2 - 7.4	12.8	11.5	11	0.5 - 1.6	100
497638	-	Round	6.2 - 7.4	13	11.5	11	1.8 - 2.5	100
465782	465783	Round	7.6	15.9	14	14.8	1.6	500
465778	-	Round	7.6	15.9	14	14.8	3.2	500
497644	-	Round	7.4 - 8.2	15.9	14	14.8	0.5 - 1.6	100
497643	-	Round	7.4 - 8.2	15.9	14	14.8	1.9 - 3.2	100
497642	-	Round	8.2 - 9.2	15.9	14	14.8	0.5 - 1.6	100
497645	-	Round	8.2 - 9.2	15.9	14	14.8	1.9 - 3.2	100
465774	465775	Round	8.2-9.2	15.9	14	14.8	1.6	500
497647	-	Round	9.2 - 10.5	19.7	17	19	1.9 - 3.2	100
497657	-	Round	12.0 - 15.2	21.6	21.3	20.6	1.9 - 3.2	100
465794	-	Round	13.5-15.2	22.2	21.3	20.8	1.6	200
465796	-	Round	13.5-15.2	22.2	21.3	20.8	3.2	200
465790	-	Round	9.4-11	22.2	19.6	19	3.2	200
465792	-	Round	9.4-11	22.2	19.6	19	5.1	200
497654	-	Round	9.2 - 10.5	28	25.5	25.2	1.0 - 3.2	100
465746	465747	Round	5.6-6.3	12.7-13.1	11.5	11	2.5	500
465750	465751	Round	6.4-7.4	12.7-13.1	11.5	11	1.6	500
465752	465753	Round	6.4-7.4	12.7-13.1	11.5	11	4	500
465744	-	Round	6.5-7.5	12.7-13.1	11.5	11	2.5	500
465780	-	Round	7.6-9.2	15.9-17.4	14	17.1	4	500
465788	465789	Round	9.1-10.9	19-19.8	16.8	19	1.6	200
465784	-	Round	9.2-11	19-19.8	16.8	19	1.6	200

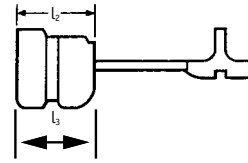
GROMMETS, STRAIN RELIEF AND BLANKING PLUGS

Strain Relief Bushes

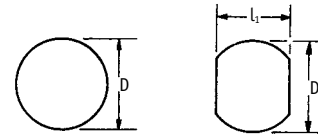
SR 1711

Black Nylon 6.6

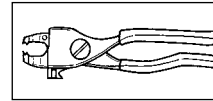
- Eliminate cable strain and wear
- Withstand temperatures up to +85°C
- Crimped onto cable and inserted into hole using tool part number 34811
- For round or elongated holes



Hole shapes



Installation tool



Part Number 34811

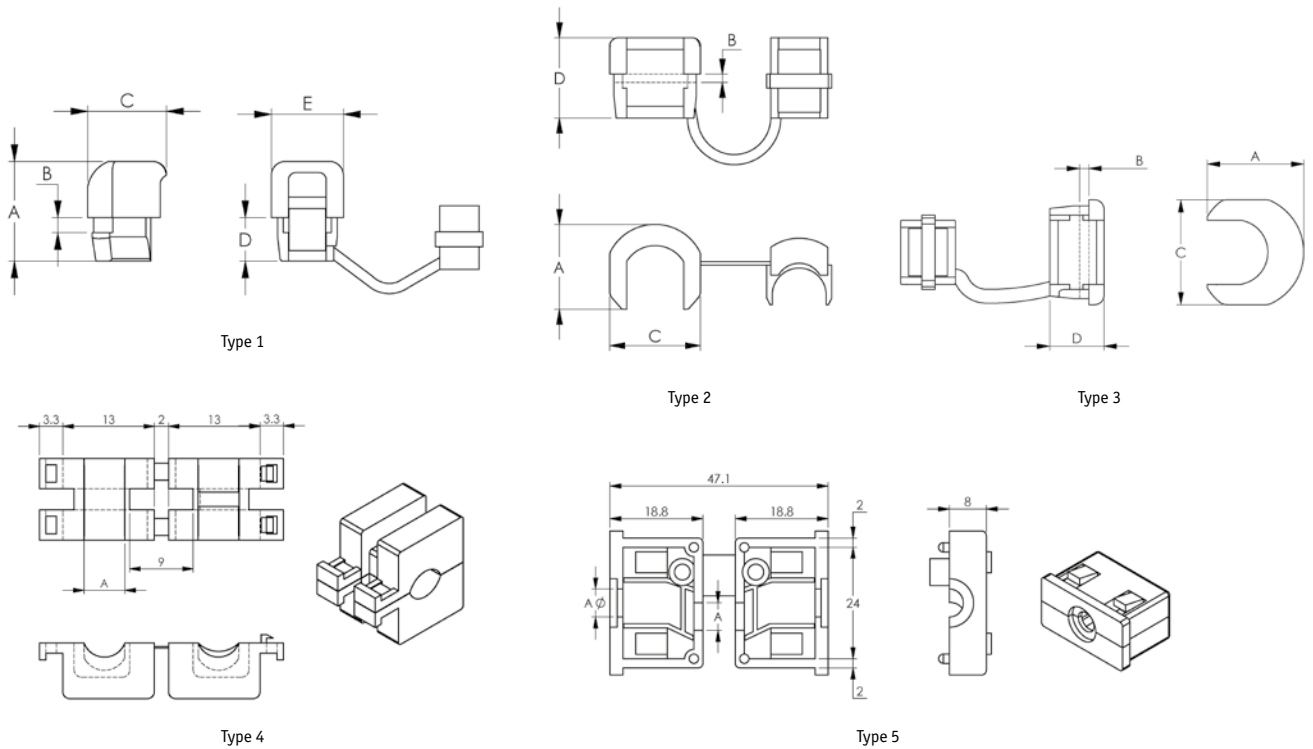
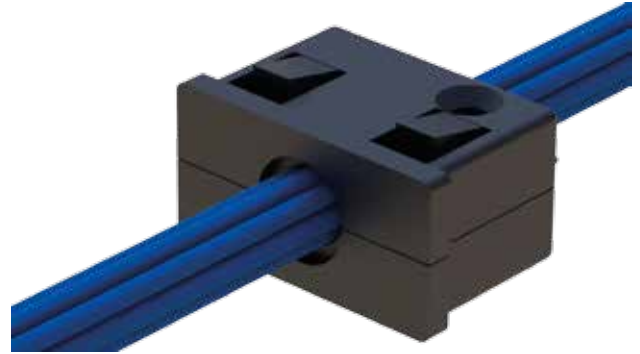
Part Number	UL Number	Wires Accommodated	Fits Cable		Dimensions (mm)			Max. Panel Thickness (mm)	Std Pack Qty
			Shape	Size (mm)	D	l1	l2		
SRB-D-3	-	SP-1,SPT-1 #18/2	Flat	3x5.6	11.1	10.0	10.4	1.6	500
SRB-F-1	E107293	SPT-1	Flat	3x5.6	9.5	8.7	10.4	1.6	1000
460992	-	-	Flat	3x7.6	12.7	12.7	11.8	1.6	1000
SRB-F-2	-	SP-1,SPT-1 #18/2	Flat	2.8x5.3	9.5	8.8	10.4	1.6	500
SRB-F-2	-	XT (Clockwise) #18/2	-	2.3x4.6	-	-	-	-	-
SRB-F-3	E107293	SPT-1	Flat	3x5.6	11.0	9.9	10.4	1.6	1000
SRB-F-4	-	SP-2,SPT-2 #16/2,HPN #16/2	Flat	4.1x7.6	13.1	11.8	12.7	2.5	500
SRB-F-4	-	SP-2,SPT-2 #18/2,HPN #18/2	-	3.8x7.1	12.7	-	-	-	-
SRB-F-5	-	HPN #16/3	Flat	4.1x9.4	14.3	13.5	15.2	3.3	500
SRB-F-5	-	SPT-2 #18/3	-	3.8x8.6	-	-	-	-	-
SRB-F-5	-	SPT-3 #16/2	-	5.1x9.4	-	-	-	-	-
SRB-F-5	-	SPT-3 #18/2	-	4.6x8.9	-	-	-	-	-
SRB-F-6	E107293	SPT-1	Flat	3x5.6	11.0	9.9	10.4	2.5	1000
SRB-F-7	-	SPT-1 #18/3	-	3x7.6	-	-	-	-	-
SRB-F-7	-	HPN #18/2	-	3.8x7.1	12.7	11.6	10.2	1.8	500
SRB-F-7	-	HPN #16/2	-	4.1x7.6	-	-	-	-	-
SRB-F-8	E107293	SPT-2	Flat	3.71x7.6	12.7	11.8	10.4	1.6	1000
SRB-F-8	E107293	-	-	3.8x7.6	13.1	-	-	-	-
SRB-F-9	E107293	SPT-2	Flat	3.71x7.6	12.7	-	-	2.5	-
SRB-F-9	E107293	-	-	3.8x7.6	13.1	-	-	-	-
460998	-	-	Round	7.2	15.9	15.9	14.0	1.6	500
SRB-R-1	E107293	SVI	Round	6.4	12.7	11.5	10.9	1.6	-
SRB-R-1	E107293	SVT	-	7.4	13.1	-	-	-	-
SRB-R-2	E107293	SVI	Round	6.4	12.7	-	-	2.5	-
SRB-R-2	E107293	SVT	-	7.4	13.1	-	-	-	-
460999	-	-	Round	7.6	12.7	12.7	11.8	2.3	1000
SRB-R-3	E107293	SJT #18/3	Round	7.6	15.9	14.0	14.8	1.6	500
SRB-R-4	E107293	SJT #18/3	Round	-	-	-	-	3.2	-
SRB-R-5	-	SV,SVT #18/2	Round	6.35	12.7	11.8	10.9	2.5	-
SRB-R-5	-	SV,SVT #18/3	-	6.73	13.1	-	-	-	-
SRB-R-5	-	HPD #16/2	-	7.37	-	-	-	-	-
SRB-R-5	-	HPD #18/2	-	6.86	12.7	-	-	-	-
SRB-R-6	-	SJ,SJT,SJO #16/2	Round	8.26	16.7	14.5	17.3	3.2	-
SRB-R-6	-	SJ,SJT,SJO #18/2	-	7.62	-	-	-	-	-
SRB-R-6	-	SJ,SJT,SJO #16/3	-	9.02	17.5	-	-	-	-
SRB-R-6	-	SJ,SJT,SJO #18/3	-	8.38	-	-	-	-	-
SRB-R-7	E107293	SJT #16/3	Round	8.2-9.2	15.9	14.0	14.8	1.6	-
SRB-R-8	E107293	SJT #16/3	Round	-	-	-	-	3.2	-
SRB-R-9	E107293	SJT #14/3	Round	9.2-10.5	19.0	16.5	19.1	1.6	100
SRB-R-9	E107293	-	-	11	19.8	-	-	-	-
SRB-R-10	E107293	SJT #14/3	Round	9.2-10.5	19.0	-	19.4	3.2	-
SRB-R-10	E107293	-	-	11	19.8	-	-	-	-

Strain Relief Bushes

SR 6280

Black, Nylon 6/6 UL94-V2

- Prevents strain damage to cables and equipment
- Prevents accidental disconnections
- Anchors cable to equipment
- Seals cable entry point



Part Number	Dimensions (mm)					Type	Style	Max Panel Thickness	Wire Style	Std Pack Qty
	A	B	C	D	E					
XSRBRA01-01	14.8	15.4	4.8	11.1	13.1	1	1	2.5	SV / 6 Ø	1000
XSRB18-01	15.1	15.5	3.6	11.3	-	2	2	2.4	SJT / 18.2 Ø	1000
XSRB12-01	11.4	11.2	4.8	6.4	-	3	2	1.3	S.P.S / 12 Ø	1000
XSRB10-01	14.8	15.4	4.8	11.1	-	1	3	1	SJT / 10.5 Ø	1000
XSRB15-01	15.1	15.5	3.6	11.3	-	2	3	2.4	SJT / 13.5 Ø	1000

Part Number	Dimensions (mm)	Panel Thickness	Style	Std Pack Qty
	A			
XSRBS01-01	5.8	3	4	1000
XSRBS02-01	6	1.2	5	1000
XSRBS03-01	8.5	1.2	5	1000

GROMMETS, STRAIN RELIEF AND BLANKING PLUGS

Quick Bushing

SR6442

Natural Nylon

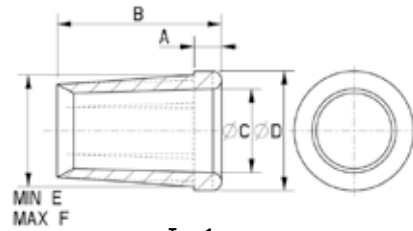
- Full protection of wires in threaded spaces
- Statutory requirement for lighting equipment
- Protects and insulates



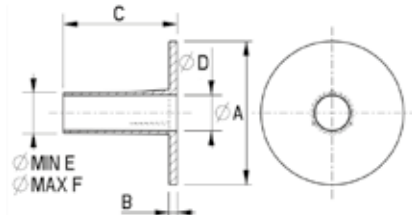
Type 1



Type 2



Type 1



Type 2

Part Number	Dimensions (mm)						Type	Std Pack Qty
	A	B	C	D	E	F		
017007000003	2	12	6	8.5	7	8	1	1000
017116000001	16	1.5	20	6	7	8	2	500
017125000001	25	1.5	20	6	7	8	2	500

TRY BEFORE YOU
BUY - REQUEST
YOUR **FREE**
SAMPLES TODAY

Call 0845 758 5070 or visit
www.essentracomponents.co.uk

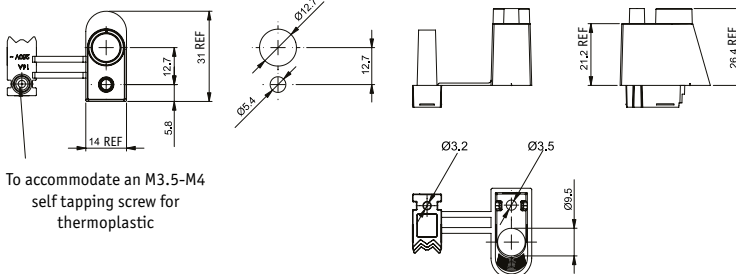
Mains Lead Clamp

MLC

Black UL94-V2 Nylon 6/6, RMS-01

- Clamp mounts into the chassis to secure the main power cable in appliances
- Clamp provides strain relief to the cable and protects the cable from the metal cutout

Panel Mounting Details



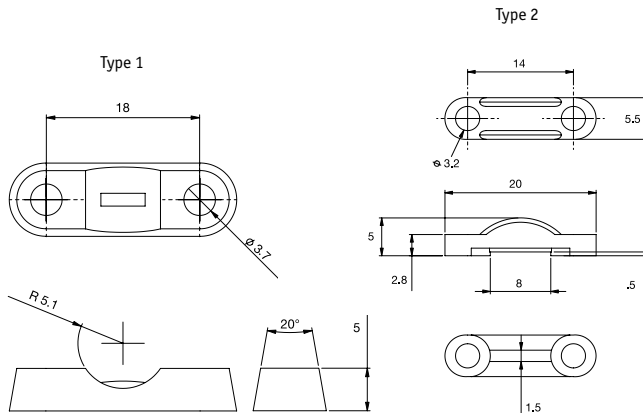
Part Number	Cable Ø Accepted (mm)	Panel Thickness (mm)	Std Pack Qty
MLC-1	6.8 - 8.5	0.5 - 2	500



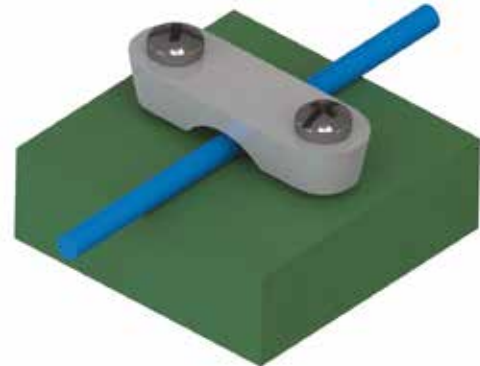
Strain Relief Clamp

SRCCC

- Clamp mounts into the chassis to secure the main power cable in appliances
- Clamp provides strain relief to the cable and protects the cable from the metal cutout



Part Number	Type	UL94-V2, Nylon 6/6	Colour	Max. Cable Ø (mm)	Mounting Screws	Std Pack Qty
SRCC-1	1	RMS-48	Gray	4.5	M3	1000
SRCC-2	2	RMS-01	Black	8	M3	1000



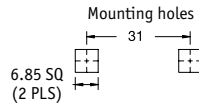
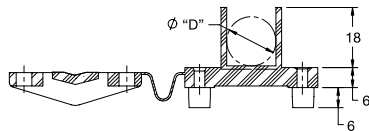
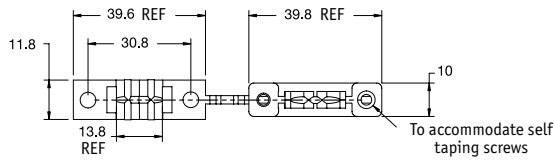
GROMMETS, STRAIN RELIEF AND BLANKING PLUGS

Hinged Locking Clamp

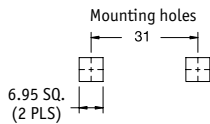
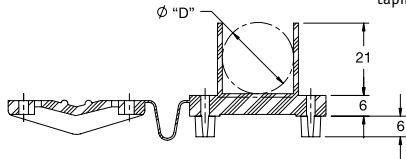
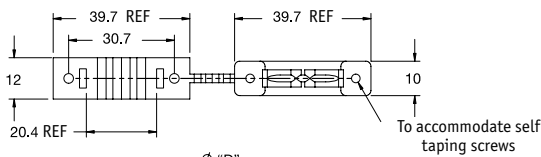
HMCC



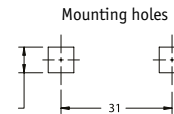
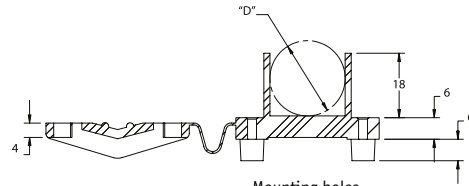
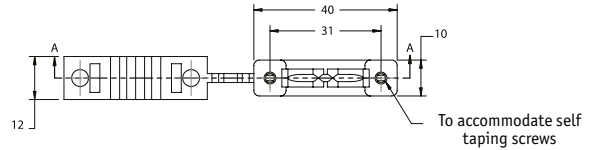
HMCC-1
Type 1



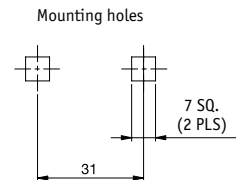
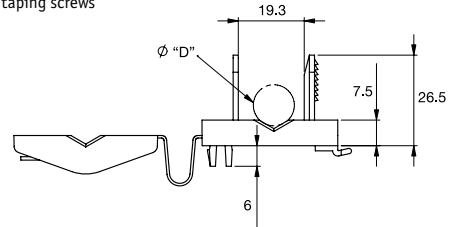
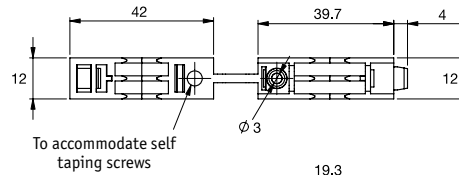
HMCC-3
Type 3



HMCC-2
Type 2



HMCC-4
Type 4



Part Number			Type	"D" Max. Bundle Ø (mm)	Self Tapping Mounting Screws	Mounting Panel Thickness (mm)	Std Pack Qty
Natural UL94-V2 Nylon 6/6, RMS-01	Black UL94-V2 Nylon 6/6, RMS-01	Natural UL94-V0 Nylon 6/6, RMS-19					
HMCC-1-01	HMCC-1-01BK	HMCC-1-19	1	15.1	2x #8	0.6-1.5	500
HMCC-2-01	HMCC-2-01BK	HMCC-2-19	2	16.0	#8	0.6-1.5	1000
HMCC-3-01	HMCC-3-01BK	HMCC-3-19	3	20.9	2x M3.5, M4, #8	0.6-1.5	1000
HMCC-4-01	HMCC-4-01BK	HMCC-4-19	4	12.0	1x M3.5, M4, #8	0.8-1.2	1000

High Performing Cable Gland – Metric Thread

CG-M

Gland Body and Nut: UL94-V2 Nylon 6, RMS-36

Outer Sealing Gland: CR/NBR, RMS-37

Inner Sealing Gland: TPE, RMS-40

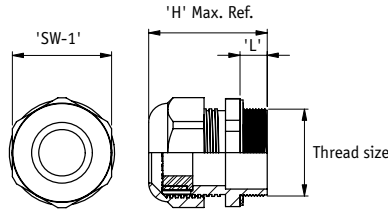
Sealing Washer: NBR, RMS-41^

- Protection Class: IP68 – 5 Bar
- Operating temperature: -20°C – 100°C
- Remove the inner sealing gland for larger cable diameters



Locknuts

Part Number		Dimensions (mm)		Std Pack Qty
Grey	Black	SW-1	H	
CGLN-M12	CGLN-M12-BK	17.0	5.0	100
CGLN-M16	CGLN-M16-BK	22.0	5.0	100
CGLN-M20	CGLN-M20-BK	27.0	6.0	100
CGLN-M25	CGLN-M25-BK	32.0	6.0	100
CGLN-M32	CGLN-M32-BK	41.0	7.0	100
CGLN-M40	CGLN-M40-BK	50.0	7.0	50



Cable Glands

Part Number		Thread Size	Dimensions (mm)				Std Pack Qty		
Grey	Black		Cable Ø Range		Suggested Clearance Hole for Non-Threaded Mounting	"L"		"SW-1"	"H" Max. Ref.
			Min. Ø	Max. Ø					
CG-M12-1*	CG-M12-1-BK*	M12	2	5	12.2	8	15	31.0	100
CG-M16-1	CG-M16-1-BK	M16	3	10	16.2	8	20	35.5	100
CG-M20-1	CG-M20-1-BK	M20	5	13	20.2	8	24	36.0	100
CG-M25-1	CG-M25-1-BK	M25	8	17	25.2	8	29	43.0	50
CG-M32-1^	CG-M32-1-BK^	M32	12	21	32.2	10	36	50.0	25
CG-M40-1^	CG-M40-1-BK^	M40	16	28	40.2	10	46	51.0	10

*CG-M12-1 sold with outer sealing gland only.

^Sealing Washer included with threads M32 and M40.



High Performing Cable Gland – PG Thread

CG-PG

Body and Nut: UL94-V2 Nylon 6, RMS-36

Sealing Gland: CR/NBR, RMS-37

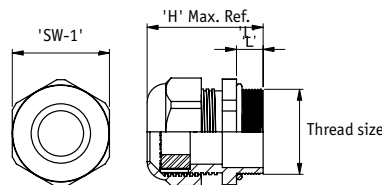
O-Ring: NBR, RMS-41*

- Protection Class: IP68 – 5 Bar
- Operating temperature: -20°C – 100°C



Locknuts

Part Number		Dimensions (mm)		Std Pack Qty
Grey	Black	SW-1	H	
CGLN-PG7	CGLN-PG7-BK	19.0	5.0	100
CGLN-PG9	CGLN-PG9-BK	22.0	5.0	100
CGLN-PG11	CGLN-PG11-BK	24.0	5.0	100
CGLN-PG13.5	CGLN-PG13.5-BK	27.0	6.0	100
CGLN-PG16	CGLN-PG16-BK	30.0	6.0	100
CGLN-PG21	CGLN-PG21-BK	36.0	7.0	100
CGLN-PG29	CGLN-PG29-BK	46.0	7.0	100
CGLN-PG36	CGLN-PG36-BK	60.0	8.0	50



Cable Glands

Part Number		Thread Size	Dimensions (mm)				Std Pack Qty		
Grey	Black		Cable Ø Range		Suggested Clearance Hole for Non-Threaded Mounting	"L"		"SW-1"	"H" Max. Ref.
			Min. Ø	Max. Ø					
CG-PG7-1	CG-PG7-1-BK	PG7	2	5	12.7	8	15	30.5	100
CG-PG7-2	CG-PG7-2-BK	PG7	3	6.5	12.7	8	15	30.5	100
CG-PG9-1	CG-PG9-1-BK	PG9	2	6	15.4	8	19	34.0	100
CG-PG9-2	CG-PG9-2-BK	PG9	4	8	15.4	8	19	34.0	100
CG-PG11-1	CG-PG11-1-BK	PG11	3	7	18.8	8	22	37.0	100
CG-PG11-2	CG-PG11-2-BK	PG11	5	10	18.8	8	22	37.0	100
CG-PG13.5-1	CG-PG13.5-1-BK	PG13.5	6	12	20.7	9	24	39.0	100
CG-PG16-1	CG-PG16-1-BK	PG16	10	14	22.8	10	27	42.5	50
CG-PG21-1	CG-PG21-1-BK	PG21	9	16	28.6	11	33	47.5	50
CG-PG21-2	CG-PG21-2-BK	PG21	13	18	28.6	11	33	47.5	50
CG-PG29-1*	CG-PG29-1-BK*	PG29	12	20	37.4	11	42	53.0	25
CG-PG36-1*	CG-PG36-1-BK*	PG36	20	26	47.5	13	53	61.0	10
CG-PG36-2*	CG-PG36-2-BK*	PG36	22	32	47.5	13	53	61.0	10

*O-Ring included with threads PG29 and PG36.



CABLE GLANDS AND ACCESSORIES

Nylon Cable Glands

SR 1704

Nylon 6

- Protection rating IP68 (when wed with our accessories)
- Flammability rating: UL94-V2
- Locknut and sealing washer available separately



PG Range - Standard Mounting Thread

Part Number		Mounting Thread Size	Mounting Thread Length (mm)	Cable Range (mm)	Std Pack Qty
Black	Grey				
467152	467177	PG 7	8.0	3.0 - 6.5	50
467153	467178	PG 7	8.0	2.0 - 5.0	50
467154	467179	PG 9	8.0	4.0 - 8.0	50
467155	467180	PG 9	8.0	2.0 - 6.0	50
467156	467181	PG 11	8.0	5.0 - 10.0	50
467157	467182	PG 11	8.0	3.0 - 7.0	50
467158	467183	PG 13.5	9.0	6.0 - 12.0	50
467159	467184	PG 13.5	9.0	5.0 - 9.0	50
467160	467185	PG 16	10.0	10.0 - 14.0	50
467161	467186	PG 16	10.0	7.0 - 12.0	50
467164	467189	PG 21	10.0	13.0 - 18.0	50
467165	467190	PG 21	10.0	9.0 - 16.0	50
467168	467193	PG 29	12.0	18.0 - 25.0	25
467169	467194	PG 29	12.0	13.0 - 20.0	25
467170	467195	PG 36	14.0	22.0 - 32.0	10
467171	467196	PG 36	14.0	20.0 - 26.0	10
467172	467197	PG 42	14.0	32.0 - 38.0	10

Metric Range - Standard Mounting Thread

Part Number					Mounting Thread Size	Mounting Thread Length (mm)	Cable Range (mm)	Std Pack Qty
Black	Grey	White	Blue	Red				
467242	467272	-	-	-	M12 x 1.5	8.0	3.0 - 6.5	50
467243	467273	-	-	-	M12 x 1.5	8.0	2.0 - 5.0	50
467246	467276	-	-	-	M16 x 1.5	8.0	4.0 - 8.0	50
467247	467277	-	-	-	M16 x 1.5	8.0	2.0 - 6.0	50
467250	467280	467250-W	467250-B	467250-R	M20 x 1.5	9.0	6.0 - 12.0	50
467251	467281	467251-W	467251-B	467251-R	M20 x 1.5	9.0	5.0 - 9.0	50
467256	467286	467256-W	467256-B	467256-R	M25 x 1.5	10.0	13.0 - 18.0	50
467257	467287	467257-W	467257-B	467257-R	M25 x 1.5	10.0	9.0 - 16.0	50
467262	467292	-	-	-	M32 x 1.5	11.0	16.0 - 21.0	25
467263	467293	-	-	-	M32 x 1.5	11.0	13.0 - 18.0	25
467266	467296	-	-	-	M40 x 1.5	14.0	22.0 - 32.0	10
467267	467297	-	-	-	M40 x 1.5	14.0	20.0 - 26.0	10
467268	467298	-	-	-	M50 x 1.5	14.0	32.0 - 38.0	10
467269	467299	-	-	-	M50 x 1.5	14.0	25.0 - 31.0	10
467270	467300	-	-	-	M63 x 1.5	14.0	37.0 - 44.0	10
467271	467301	-	-	-	M63 x 1.5	14.0	29.0 - 35.0	10

PG Range - Long Mounting Thread

Part Number		Mounting Thread Size	Mounting Thread Length (mm)	Cable Range (mm)	Std Pack Qty
Black	Grey				
467202	467222	PG 7	15.0	3.0 - 6.5	50
467203	467223	PG 7	15.0	2.0 - 5.0	50
467204	467224	PG 9	15.0	4.0 - 8.0	50
467205	467225	PG 9	15.0	2.0 - 6.0	50
467206	467226	PG 11	15.0	5.0 - 10.0	50
467207	467227	PG 11	15.0	3.0 - 7.0	50
467208	467228	PG 13.5	15.0	6.0 - 12.0	50
467209	-	PG 13.5	15.0	5.0 - 9.0	50
467212	467232	PG 21	15.0	13.0 - 18.0	50
467213	467233	PG 21	15.0	9.0 - 16.0	50
467214	467234	PG 29	18.0	18.0 - 25.0	25
467215	467235	PG 29	18.0	13.0 - 20.0	25
467216	467236	PG 36	18.0	22.0 - 32.0	10
467217	-	PG 36	18.0	20.0 - 26.0	10
467218	467238	PG 42	18.0	32.0 - 38.0	10
467220	-	PG 48	18.0	37.0 - 44.0	10

Metric Range - Long Mounting Thread

Part Number		Mounting Thread Size	Mounting Thread Length (mm)	Cable Range (mm)	Std Pack Qty
Black	Grey				
467302	467324	M12 x 1.5	15.0	3.0 - 6.5	50
467303	467325	M12 x 1.5	15.0	2.0 - 5.0	50
467304	467326	M16 x 1.5	15.0	4.0 - 8.0	50
467305	467327	M16 x 1.5	15.0	2.0 - 6.0	50
467308	467330	M20 x 1.5	15.0	6.0 - 12.0	50
467309	467331	M20 x 1.5	15.0	5.0 - 9.0	50
467314	467336	M25 x 1.5	15.0	13.0 - 18.0	50
467315	467337	M25 x 1.5	15.0	9.0 - 16.0	50
467316	467338	M32 x 1.5	15.0	18.0 - 25.0	25
467317	467339	M32 x 1.5	15.0	13.0 - 20.0	25
467318	467340	M40 x 1.5	18.0	22.0 - 32.0	10
467319	-	M40 x 1.5	18.0	20.0 - 26.0	10
467320	467342	M50 x 1.5	18.0	32.0 - 38.0	10
467322	467344	M63 x 1.5	18.0	37.0 - 44.0	10

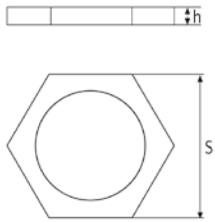
NPT Range

Part Number		Mounting Thread Size	Mounting Thread Length (mm)	Cable Range (mm)	Std Pack Qty
Black	Grey				
467347	-	3/8" NPT	15.0	2.0 - 6.0	50
467348	467356	1/2" NPT	13.0	6.0 - 12.0	50
467349	467357	1/2" NPT	13.0	5.0 - 9.0	50
467350	467358	3/4" NPT	15.0	13.0 - 18.0	25
467351	467359	3/4" NPT	15.0	9.0 - 16.0	25
467352	-	1" NPT	16.0	18.0 - 25.0	25

Locknuts and Sealing Washers for Cable Glands

SR 1741/1729

Nylon 6, brass and Neoprene



Nylon Locknut



Brass Locknut



Washer for Nylon Gland



Washer for Brass Gland

Nylon/Neoprene

Part Number		Locknut Thread Size	Dimensions (mm)		Washer Part Number	Std Pack Qty
Black	Grey		S	h		
467585	467741	PG 7	18.0 - 19.0	5.0	467643	50
467586	467742	PG 9	22.0	5.0	467644	50
467587	467743	PG 11	24.0	5.0	467645	50
467588	467744	PG 13.5	27.0	5.5	467646	50
467589	467745	PG 16	30.0	5.5	467647	50
467591	467746	PG 21	36.0	6.0	467649	50
467593	467747	PG 29	46.0	7.0	467651	25
467594	467748	PG 36	59.0 - 60.0	8.0	467652	10
467595	467749	PG 42	63.0 - 65.0	8.0	467653	10
467596	467750	PG 48	69.0 - 70.0	8.0	467654	10
467598	467752	M12 x 1.5	18.0	5.0	467656	50
467600	467753	M16 x 1.5	22.0	5.0	467658	50
467602	467754	M20 x 1.5	27.0	5.5	467660	50
467605	467755	M25 x 1.5	33.0	6.5	467663	50
467608	467756	M32 x 1.5	39.0 - 42.0	8.0	467667	25
467610	467757	M40 x 1.5	50.0 - 52.0	7.0	467669	10
467611	467758	M50 x 1.5	63.0 - 65.0	8.0	467670	10
467613	467759	M63 x 1.5	75.0	8.0	467671	10
467614	-	3/8" NPT	24.0	5.0	467672	50
467615	467761	1/2" NPT	27.0	7.0	467673	50
467616	467762	3/4" NPT	32.0	7.0	467674	25
467617	467763	1" NPT	40.7	7.0	467675	25

Brass/Neoprene

Part Number	Locknut Thread Size	Dimensions (mm)		Corresponding Washer Part Number	Std Pack Qty
		S	h		
490711	PG 7	15.0	2.5	467677	25
490712	PG 9	18.0	3.0	467678	25
490713	PG 11	21.0	3.5	467679	25
490714	PG 13.5	22.0	3.5	467680	25
490715	PG 16	24.5	3.5	467681	25
490716	PG 21	32.5	3.5	467682	25
490717	PG 29	41.0	4.0	467683	10
490718	PG 36	51.0	5.0	467684	10
490719	PG 42	60.0	5.0	467685	10
490720	PG48	64.0	5.0	467686	10
490721	M12 x 1.5	14.0	2.5	467687	25
490722	M16 x 1.5	18.0	3.0	467688	25
490723	M20 x 1.5	23.5	3.0	467690	25
490724	M25 x 1.5	29.0	3.5	467692	25
490725	M32 x 1.5	36.0	4.0	467693	10
490726	M40 x 1.5	46.0	4.5	467694	10
490727	M50 x 1.5	55.0	5.0	467695	10
490728	M63 x 1.5	70.0	5.5	467696	10
490729	3/8" NPT	19.5	3.0	467697	25
490730	1/2" NPT	24.0	4.5	467698	25
490731	3/4" NPT	31.5	3.5	467699	10
490732	1" NPT	38.0	4.0	467700	10

Spiral Cable Glands

SR 1714

Nylon 6

- Locknut and sealing washer available separately



Metric Range

Part Number		Mounting Thread Size	Mounting Thread Length (mm)	Cable Range (mm)	Std Pack Qty
Black	Grey				
467386	467400	M12 x 1.5	8.0	3.0 - 6.5	50
467388	467402	M16 x 1.5	8.0	4.0 - 8.0	25
467392	467406	M20 x 1.5	9.0	6.0 - 12.0	25
467396	467410	M25 x 1.5	10.0	13.0 - 18.0	10

NPT Range

Part Number	Colour	Mounting Thread Size	Mounting Thread Length (mm)	Cable Range (mm)	Std Pack Qty
467414	Black	3/8" NPT	15.0	4.0 - 8.0	50
467416	Black	1/2" NPT	13.0	6.0 - 12.0	50

PG Range

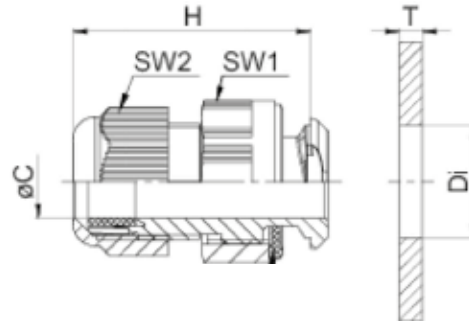
Part Number		Mounting Thread Size	Mounting Thread Length (mm)	Cable Range (mm)	Std Pack Qty
Black	Grey				
467362	467374	PG 7.0	8.0	3.0 - 6.5	50
467364	467376	PG 9.0	8.0	4.0 - 8.0	25
467366	467378	PG 11.0	8.0	5.0 - 10.0	25
467368	467380	PG 13.5	9.0	6.0 - 12.0	25
467370	467382	PG 16.0	10.0	10.0 - 14.0	10
467372	467384	PG 21.0	10.0	13.0 - 18.0	10

CABLE GLANDS AND ACCESSORIES

Easy fix Cable Gland

Polyamide PA6 V-2

- Quick and easy installation with no inner thread required
- Protection rating IP68 to 5 bar
- Temperature range -20°C to 100°C



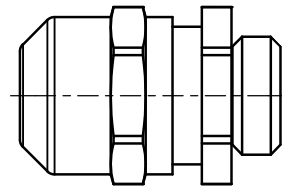
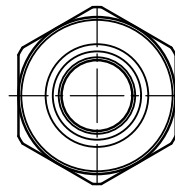
Part Number			Compatible Type	Compatible Hole \varnothing (mm)	Compatible wall thickness (mm)	Dimensions (mm)				Pack Quantity
Black (RAL 9005)	Light Grey (RAL 7001)	Dark Grey (RAL 7035)				H	C	SW1	SW2	
1334494	1334493	1334492	M16	16.1 - 16.3	1 - 4	38.5	5 - 10	24	20	100
1334497	1334496	1334495	M20	20.1 - 20.4	1 - 4	42.5	8 - 13	26	24	100
1334500	1334499	1334498	M25	25.1 - 25.4	1 - 4	48	11 - 17	32	29	50
1334503	1334502	1334501	M32	32.1 - 32.4	1 - 4	58.5	15 - 21	42	36	50

Stainless Steel Cable Glands

SR6462

Stainless Steel A2

- Protection class to EN 60 529: IP 68 to 5 bar (30 min)
- Protection class to DIN 40 050-T9: IP 69K
- Temperature range: -40°C to 100°C, interm. Up to approx. 120°C
- Gasket: EPDM



Metric Range

Part Number	Mounting Thread Size	Mounting Thread Length (mm)	Cable Range (mm)	Std Pack Qty
551786	M12 x 1.5	5	3.0-7.0	10
551787	M16 x 1.5	5	4.5-10.0	10
551788	M20 x 1.5	6	6.0-13.0	10
551789	M25 x 1.5	7	9.0-17.0	10
551790	M32 x 1.5	8	13.0-21.0	5
551791	M40 x 1.5	8	16.0-28.0	5
551792	M50 x 1.5	9	21.0-35.0	2
551793	M63 x 1.5	10	34.0-48.0	1

Brass Cable Glands

SR 1717

Nickel Plated Brass

- Protection Rating IP68
- Locknut and sealing washer available separately
- Operating temperature range: -20°C to 85°C
- CE approved



Metric Range

Part Number	Mounting Thread Size	Mounting Thread Length (mm)	Cable Range (mm)	Std Pack Qty
490687	M12 x 1.5	6.5	3.0 - 6.5	25
490688	M12 x 1.5	6.5	2.0 - 5.0	25
490689	M16 x 1.5	8.0	4.0 - 8.0	25
490690	M16 x 1.5	8.0	2.0 - 6.0	25
490691	M20 x 1.5	6.5	6.0 - 12.0	25
490692	M20 x 1.5	6.5	5.0 - 9.0	25
490693	M25 x 1.5	8.0	13.0 - 18.0	25
490694	M25 x 1.5	8.0	9.0 - 16.0	25
490695	M32 x 1.5	10.0	18.0 - 25.0	10
490696	M32 x 1.5	10.0	13.0 - 20.0	10
490697	M40 x 1.5	10.0	22.0 - 32.0	10
490698	M40 x 1.5	10.0	20.0 - 26.0	10
490699	M50 x 1.5	13.0	32.0 - 38.0	10
490700	M50 x 1.5	13.0	25.0 - 31.0	10
490701	M63 x 1.5	10.5	37.0 - 44.0	10
490702	M63 x 1.5	10.5	29.0 - 35.0	10

NPT Range

Part Number	Mounting Thread Size	Mounting Thread Length (mm)	Cable Range (mm)	Std Pack Qty
490703	3/8" NPT	15.0	4.0 - 8.0	25
490704	3/8" NPT	15.0	2.0 - 6.0	25
490705	1/2" NPT	13.0	6.0 - 12.0	25
490706	1/2" NPT	13.0	5.0 - 9.0	25
490707	3/4" NPT	13.0	13.0 - 18.0	10
490708	3/4" NPT	13.0	9.0 - 16.0	10
490709	1" NPT	13.0	18.0 - 25.0	10
490710	1" NPT	13.0	13.0 - 20.0	10

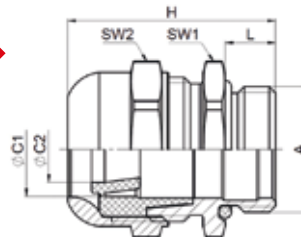
PG Range

Part Number	Mounting Thread Size	Mounting Thread Length (mm)	Cable Range (mm)	Std Pack Qty
490667	PG 7	7.0	3.0 - 6.5	25
490668	PG 7	7.0	2.0 - 5.0	25
490669	PG 9	7.0	4.0 - 8.0	25
490670	PG 9	7.0	2.0 - 6.0	25
490671	PG 11	7.0	5.0 - 10.0	25
490673	PG 13.5	7.0	6.0 - 12.0	25
490674	PG 13.5	7.0	5.0 - 9.0	25
490675	PG 16	6.5	10.0 - 14.0	25
490676	PG 16	6.5	7.0 - 12.0	25
490677	PG 21	8.0	13.0 - 18.0	25
490678	PG 21	8.0	9.0 - 16.0	25
490679	PG 29	9.0	18.0 - 25.0	10
490680	PG 29	9.0	13.0 - 20.0	10
490681	PG 36	10.5	22.0 - 32.0	10
490682	PG 36	10.5	20.0 - 26.0	10
490683	PG 42	11.5	32.0 - 38.0	10
490684	PG 42	11.5	25.0 - 31.0	10
490685	PG 48	13.0	37.0 - 44.0	10

High Performing Brass Cable Glands

Nickel Plated Brass

- Sealing insert fulfills UL94HB
- Protection class to EN 62444: IP68 to 10 bar
- Temperature range -40°C to 100°C



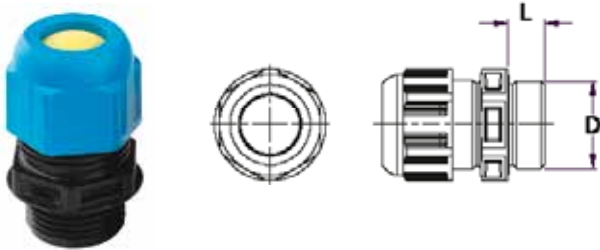
Part Number	Compatible Type	Dimensions (mm)							Pack Quantity
		C	C2	C1	L	SW1	Sw2	H	
1334484	M12	3 - 8	3 - 5	5 - 8	6.5	16	16	25.5	100
1334485	M16	5 - 10.5	5 - 7.5	7.5 - 10.5	7	20	20	31.5	100
1334486	M20	8 - 15	8 - 10.5	10.5 - 15	8	25	25	33	50
1334487	M25	12.5 - 20.5	12.5 - 15.5	15.5 - 20.5	8	32	32	33.5	50
1334488	M32	17 - 25.5	17 - 20.5	20.5 - 25.5	9	36	36	40.5	25
1334489	M40	24 - 33	24 - 29	29 - 33	9	45	45	43	10
1334490	M50	31 - 42	31 - 37.5	37.5 - 42	10	55	55	47.5	5
1334491	M62	40 - 53	46 - 53	46 - 53	10	70	70	53	5

CABLE GLANDS AND ACCESSORIES

ATEX Low Voltage Cable Glands

SR6464

Polyamide



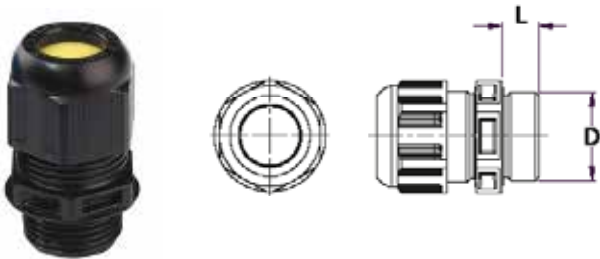
- For Intrinsic Safety
- Explosion protection: II 2 G Ex e II II 2 D Ex tD A21 IP68
- Certification: PTB 05 ATEX 1068 X
- Protection class to EN 60 529: IP68
- Protection class to DIN 40 050-T9: IP 69K
- Flame Protection: Glow wire test 750°C acc. To EN 60695-2-11
- Temperature range: -40°C to 75°C

Part Number	D (mm)	L (mm)	Cable Range (mm)	Std Pack Qty
551801	M16 x 1.5	9.0	4.0-9.0	50
551802	M20 x 1.5	10.0	6.0-13.0	50
551803	M25 x 1.5	10.0	7.0-17.0	50
551804	M32 x 1.5	12.0	13.0-21.0	25
551805	M40 x 1.5	12.0	17.0-28.0	10
551806	M50 x 1.5	14.0	23.0-25.0	4
551807	M63 x 1.5	15.0	34.0-48.0	1

ATEX Cable Glands

SR6463

Black Polyamide



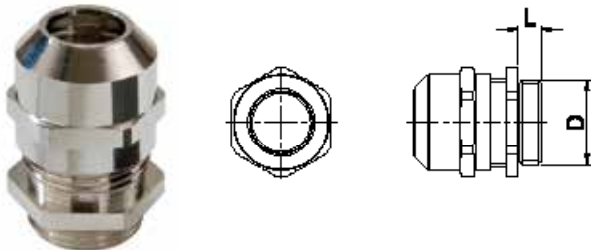
- For Increased Safety
- Explosion protection: II 2 G Ex e II II 2 D Ex tD A21 IP68
- Certification: PTB 05 ATEX 1068 X
- Protection class to EN 60 529: IP68 5bar (30min)
- Protection class to DIN 40 050-T9: IP 69K
- Flame Protection: Glow wire test 750°C acc. To EN 60695-2-11
- Temperature range: -40°C to 75°C

Part Number	D (mm)	L (mm)	Cable Range (mm)	Std Pack Qty
551794	M16 x 1.5	9.0	4.0-9.0	50
551795	M20 x 1.5	10.0	6.0-13.0	50
551796	M25 x 1.5	10.0	7.0-17.0	50
551797	M32 x 1.5	12.0	13.0-21.0	30
551798	M40 x 1.5	12.0	17.0-28.0	10
551799	M50 x 1.5	14.0	23.0-25.0	4
551800	M63 x 1.5	15.0	34.0-48.0	1

Atex Cable Glands

SR 1763

Nickel Plated Brass



- Explosion Protection: II 2 G EX e II II 2 D Ex tD A21 IP68
- Certification: PTB 04 ATEX 1112 X
- Protection Class to EN 60 529: IP68 to 5 bar (30 min)
- Protection class to DIN 40 050-T9: IP69K
- Temperature Range: -40°C to 75°C

Part Number	D (mm)	L (mm)	Cable Range (mm)	Std Pack Qty
495133	M12 x 1.5	5.0	4.0 - 7.0	50
495134	M16 x 1.5	5.0	5.0 - 10.0	50
495135	M20 x 1.5	6.0	6.0 - 13.0	50
495136	M25 x 1.5	7.0	10.0 - 17.0	50
495137	M32 x 1.5	8.0	13.0 - 21.0	25
495138	M40 x 1.5	8.0	16.0 - 28.0	10
495139	M50 x 1.5	9.0	21.0 - 35.0	10
495140	M63 x 1.5	10.0	32.0 - 48.0	10

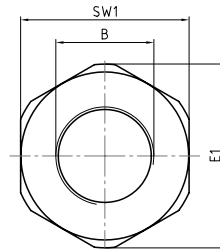
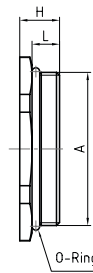
Polyamide Reducers

Polyamide PA6

- Reduce threaded or clearance holes to smaller thread sizes
- Protection grade: dependent on combination with other components
- Temperature range -40°C to 100°C



Part Number		Dimensions (mm)						Pack Quantity
Black (RAL 9005)	Dark Grey (RAL 7035)	A	B	L	SW1	H		
1335889	1335911	M16 x 1.5	M12 x 1.5	8	24	12	100	
1335890	1335912	M20 x 1.5	M12 x 1.5	8	24	12	100	
1335891	1335913	M20 x 1.5	M16 x 1.5	8	24	12	100	
1335892	1335914	M25 x 1.5	M12 x 1.5	8	29	14	100	
1335893	1335915	M25 x 1.5	M16 x 1.5	8	29	14	100	
1335894	1335916	M25 x 1.5	M20 x 1.5	8	29	14	100	
1335895	1335917	M32 x 1.5	M12 x 1.5	10	36	16	50	
1335896	1335918	M32 x 1.5	M16 x 1.5	10	36	16	50	
1335897	1335919	M32 x 1.5	M20 x 1.5	10	36	16	50	
1335898	1335920	M32 x 1.5	M25 x 1.5	10	36	16	50	
1335899	1335921	M40 x 1.5	M16 x 1.5	10	46	16	50	
1335900	1335922	M40 x 1.5	M20 x 1.5	10	46	16	50	
1335901	1335923	M40 x 1.5	M25 x 1.5	10	46	16	50	
1335902	1335924	M40 x 1.5	M32 x 1.5	10	46	16	50	
1335903	1335925	M50 x 1.5	M20 x 1.5	12	55	18	25	
1335904	1335926	M50 x 1.5	M25 x 1.5	12	55	18	25	
1335905	1335927	M50 x 1.5	M32 x 1.5	12	55	18	25	
1335906	1335928	M50 x 1.5	M40 x 1.5	12	55	18	25	
1335907	1335929	M63 x 1.5	M25 x 1.5	12	68	18	25	
1335908	1335930	M63 x 1.5	M32 x 1.5	12	68	18	25	
1335909	1335931	M63 x 1.5	M40 x 1.5	12	68	18	25	
1335910	1335932	M63 x 1.5	M50 x 1.5	12	68	18	25	



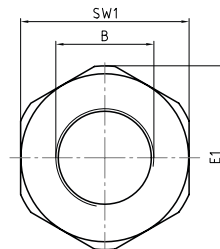
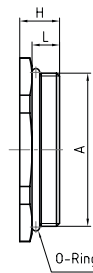
Brass Reducers

Nickel-plated Brass

- Reduce threaded or clearance holes to smaller thread sizes
- Protection grade: Max IP68 dependent on combination with other components
- Temperature range -40°C to 100°C



Part Number	Dimensions (mm)						Pack Quantity
	A	B	L	SW1	H		
1335872	M16 x 1.5	M12 x 1.5	8	24	12	100	
1335873	M20 x 1.5	M12 x 1.5	8	24	12	100	
1335874	M20 x 1.5	M16 x 1.5	8	24	12	100	
1335875	M25 x 1.5	M16 x 1.5	8	29	14	100	
1335876	M25 x 1.5	M20 x 1.5	8	29	14	100	
1335877	M32 x 1.5	M16 x 1.5	10	36	16	50	
1335878	M32 x 1.5	M20 x 1.5	10	36	16	50	
1335879	M32 x 1.5	M25 x 1.5	10	36	16	50	
1335880	M40 x 1.5	M20 x 1.5	10	46	16	25	
1335881	M40 x 1.5	M25 x 1.5	10	46	16	25	
1335882	M40 x 1.5	M32 x 1.5	10	46	16	25	
1335883	M50 x 1.5	M25 x 1.5	12	55	18	10	
1335884	M50 x 1.5	M32 x 1.5	12	55	18	10	
1335885	M50 x 1.5	M40 x 1.5	12	55	18	10	
1335886	M63 x 1.5	M32 x 1.5	12	68	18	10	
1335887	M63 x 1.5	M40 x 1.5	12	68	18	10	
1335888	M63 x 1.5	M50 x 1.5	12	68	18	10	



OUR FULL RANGE OF ACCESS SOLUTIONS PRODUCTS

- Ask for our Access Solutions catalogue

LOCKS

Pages 344-404

**LATCHES &
CATCHES**

Pages 405-431



**DISPLAY
LOCKS**

Pages 385-390



**COMPRESSION
LOCKS**

Pages 391-404

E
ESSENTRA



ACCESS SOLUTIONS



HINGES

Pages 433-487



Call 0845 758 5070

www.essentraaccessolutions.com

Multi Slot Cable Glands

SR 6264

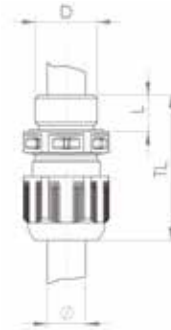
Polyamide, EPDM

- Multiple cable slots
- Moulded sealing washer
- Protection class to EN 60 529: IP 68 to 5 bar (30 min)
- Temperature Range -40°C to 100°C

Item A

Cable Gland Body Polyamide

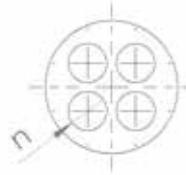
Part Number	Dimensions (mm)					Std Pack Qty
	D	Colour	L	TL	Cable Dia.	
550911	Metric M12 x 1.5	Grey RAL7035	9	29-34	3-7	50
550917	Metric M16 x 1.5	Grey RAL7035	9	31-37	4.5-10	50
550923	Metric M20 x 1.5	Grey RAL7035	10	36-45	6-13	50
550930	Metric M25 x 1.5	Grey RAL7035	10	38-47	9-17	50
550937	Metric M32 x 1.5	Grey RAL7035	10	42-51	13-21	25
550943	Metric M40 x 1.5	Grey RAL7035	12	52-65	16-28	10
550912	Metric M12 x 1.5	Black RAL9005	9	29-34	3-7	50
550918	Metric M16 x 1.5	Black RAL9005	9	31-37	4.5-10	50
550924	Metric M20 x 1.5	Black RAL9005	10	36-45	6-13	50
550931	Metric M25 x 1.5	Black RAL9005	10	38-47	9-17	50
550938	Metric M32 x 1.5	Black RAL9005	10	42-51	13-21	25
550944	Metric M40 x 1.5	Black RAL9005	12	52-65	16-28	5



Item B

Slotted Sealing Insert

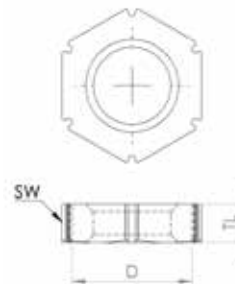
Part Number	Dimensions (mm)			Std Pack Qty
	D	No of Conductors	Cable Dia.	
550915	M12 x 1.5	2	1-2	10
550916	M12 x 1.5	4	0.5-2	10
550921	M16 x 1.5	2	2-4	10
550922	M16 x 1.5	3	1-2.1	10
550927	M20 x 1.5	2	4-6	10
550928	M20 x 1.5	3	2.5-4	10
550934	M25 x 1.5	2	5-7	10
550935	M25 x 1.5	3	5-7	10
550936	M25 x 1.5	4	4-6	10
550941	M32 x 1.5	3	6-8	10
550942	M32 x 1.5	4	5-7	10
550947	M40 x 1.5	4	8-10	10



Item C

Lock Nut Polyamide

Part Number	Dimensions (mm)			Std Pack Qty
	D	Colour	TL	
550913	Metric M12 x 1.5	Grey RAL7035	5	50
550919	Metric M16 x 1.5	Grey RAL7035	5	50
550925	Metric M20 x 1.5	Grey RAL7035	5	50
550932	Metric M25 x 1.5	Grey RAL7035	5	50
550939	Metric M32 x 1.5	Grey RAL7035	6	25
550945	Metric M40 x 1.5	Grey RAL7035	6	10
550914	Metric M12 x 1.5	Black RAL9005	5	50
550920	Metric M16 x 1.5	Black RAL9005	5	50
550926	Metric M20 x 1.5	Black RAL9005	5	50
550933	Metric M25 x 1.5	Black RAL9005	5	50
550940	Metric M32 x 1.5	Black RAL9005	6	25
550946	Metric M40 x 1.5	Black RAL9005	6	10



Not Sold Separately

Complete Assembly - ItemA + ItemB + Item C

CABLE GLANDS AND ACCESSORIES

EMC Cable Glands

SR 6266

Nickel Plated Brass



Basic Gland



Advanced Gland Body



Contact Cone



Flat Lock Nut - Type 1



Spiked Lock Nut - Type 2

- Metric Threads
- Specially constructed to terminate shielded cables to maintain screening
- Protection class to EN 60 529: IP 68 to 5 bar (30 min)
- Temperature Range -20°C to 100°C
- Reduces radiated EMI noise from equipment
- Available in basic and advanced versions
- Lock Nut sold separately

Basic EMC Gland-Contact Fingers: Type 1

Part Number	Cable Range	D- Thread Type	Dimensions (mm)			Std Pack Qty
			L- Overall Length	TL- Thread Length	SW - Width Across Flats	
34002803E	3-6.5	M12 x 1.5	28	6	14	50
34002804E	4-8	M16 x 1.5	30	7	18	50
34002805E	6-12	M20 x 1.5	33	8	22	50
34002806E	10-14	M25 x 1.5	36	8	27	25
34002807E	13-18	M32 x 1.5	42	9	34	25
34002808E	18-25	M40 x 1.5	48	9	43	20
34002809E	3-6.5	M12 x 1.5	33.8	12	14	50
34002810E	4-8	M16 x 1.5	34.6	12	18	50
34002811E	6-12	M20 x 1.5	36.5	12	22	50
34002812E	10-14	M25 x 1.5	39.5	12	27	25
34002813E	13-18	M32 x 1.5	48	15	34	25
34002814E	18-25	M40 x 1.5	54	15	43	20

Advanced EMC Gland- Contact Cone: Type 2

Part Number	Cable Range	D- Thread Type	Dimensions (mm)			Std Pack Qty
			L- Overall Length	TL- Thread Length	SW - Width Across Flats	
551239	3-7	M12 x 1.5	30	5	16	50
551240	4.5-10	M16 x 1.5	34	6	20	50
551241	6-13	M20 x 1.5	37	6	24	50
551242	9-17	M25 x 1.5	42	7	29	50
551243	13-21	M32 x 1.5	44	8	36	25
551244	16-28	M40 x 1.5	55	8	46	10

Lock Nuts

Part Number	Dimensions (mm)			Type	Std Pack Qty
	D- Thread Type	SW - Width Across Flats	TL- Thread Length		
551227	M12 x 1.5	15	2.8	1	50
551228	M16 x 1.5	19	2.8	1	50
551229	M20 x 1.5	24	3	1	50
551230	M25 x 1.5	30	3.5	1	50
551231	M32 x 1.5	36	4	1	25
551232	M40 x 1.5	46	5	1	10
551233	M12 x 1.5	15	4.7	2	50
551234	M16 x 1.5	19	4.7	2	50
551235	M20 x 1.5	24	4.7	2	50
551236	M25 x 1.5	30	5.2	2	50
551237	M32 x 1.5	36	5.7	2	25
551238	M40 x 1.5	46	6.5	2	10

Vent Plugs

SR6260

Polyamide PA 6-V2, Acrylic Co -Polymer, Nitrile Rubber

- Allows air pass through the vent but blocks moisture and dust
- Prevents pressure build up within enclosures
- Prevents seal failures or access problems due to pressure differentials
- Available in three different permeabilities



Fig 1



Fig 2



Fig 3



Fig 4



Fig 5



Fig 6



Fig 7



Fig 8

Part Number			Mounting Style	Dimensions (mm)						Fig	Std Pack Qty
Grey RAL 7001	Grey RAL 7035	Black RAL 9005		Hole Ø	Permeability at 70mBar Ltr/Hr	TL	TD	H	D		
34002733E	34002740E	34002747E	Short Thread	M12X1,5	25	6	12	7.5	17	1	100
34002734E	34002741E	34002748E	Long Thread	M12X1,5	25	10	12	7.5	17	1	100
34002735E	34002742E	34002749E	Snap In	Snap Fit	25	7.5	5.5	9.2	17	2	100
34002736E	34002743E	34002750E	Short Thread	M12X1,5	120	10	12	12.5	24	6	100
34002737E	34002744E	34002751E	Short Thread	M16X1,5	120	10	16	12.5	24	6	100
34002738E	34002745E	34002752E	Short Thread	M20X1,5	120	10	20	12.5	24	6	100
34002754E	34002761E	34002768E	Short Thread	M12X1,5	120	6	12	7.5	17	1	100
-	34002762E	34002769E	Long Thread	M12X1,5	120	10	12	7.5	17	1	100
34002756E	34002763E	34002770E	Snap In	Snap Fit	120	7.5	5.5	9.2	17	2	100
34002757E	34002764E	34002771E	Short Thread	M12X1,5	450	10	12	12.5	24	6	100
34002758E	34002765E	34002772E	Short Thread	M16X1,5	450	10	16	12.5	24	6	100
34002759E	34002766E	34002773E	Short Thread	M20X1,5	450	10	20	12.5	24	6	100
34002760E	34002767E	34002774E	Long Thread	M40X1,5	1350	18	40	19	60	7	100
34002775E	34002782E	34002789E	Short Thread	M12X1,5	300	6	12	7.5	17	1	100
34002776E	34002783E	34002790E	Long Thread	M12X1,5	300	10	12	7.5	17	1	100
34002777E	34002784E	34002791E	Snap In	Snap Fit	300	7.5	5.5	9.2	17	2	100
34002778E	34002785E	34002792E	Short Thread	M12X1,5	750	10	12	12.5	24	6	100
34002779E	34002786E	34002793E	Short Thread	M16X1,5	750	10	12	12.5	24	6	100
34002780E	34002787E	34002794E	Short Thread	M20X1,5	750	10	20	12.5	24	6	100

Stainless Steel, Acrylic Co -Polymer

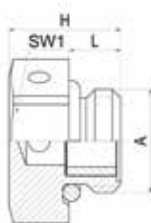
Part Number	Mounting Style	Dimensions (mm)						Fig	Std Pack Qty
		Hole Ø	Permeability at 70mBar Ltr/Hr	TD	TL	H	D		
34002796E	Low Profile	M4 X 0.7	35	4	3.1	2.7	12.3	8	100
34002797E	Long Thread	M12 x 1.5	25	12	10	11	17	3	100
34002798E	Short Thread	M12 x 1.5	25	12	6	15.2	17	3	100
34002799E	Short Thread	M16 x 1.5	25	16	6	12.4	17	3	100
34002800E	Long Thread	M16 x 1.5	25	16	6	16.5	17	3	100
34002801E	Short Thread	M20 x 1.5	120	20	6	13.5	17	3	100
34002802E	Long Thread	M20 x 1.5	120	20	6	17	17	3	100

CABLE GLANDS AND ACCESSORIES

Polyamide Venting Element

Polyamide PA6 V-0

- Protection for electronic enclosures against condensation, water and pressure
- Protection grade: IP68 0.6 bar
- Temperature range -40°C to 100°C

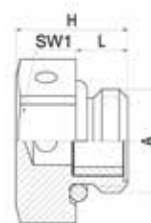


Part Number		Dimensions (mm)				Std Pack Qty
Black	Grey	A	L	SW1	H	
-	1334479	M12 x 1.5	6	17	13.8	100
1334474	1334473	M12 x 1.5	10	17	17.8	100
1334476	1334475	M20 x 1.5	10	27	21.6	10
1334478	1334477	M40 x 1.5	18	50	35.6	5

Stainless Steel Venting Element

Stainless Steel 303

- Protection for electronic enclosures against condensation, water and pressure
- Protection grade: IP68 0.6 bar
- Temperature range -40°C to 100°C



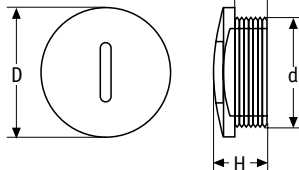
Part Number	Dimensions (mm)				Std Pack Qty
	A	L	SW1	H	
1334480	M12 x 1.5	6	17	13	25
1334481	M20 x 1.5	6	26	13	10
1334482	M40 x 1.5	8	45	18	5

Cable Gland Covers

SR 1782

Grey Nylon 6.6 and Brass

- To block entry holes for cable glands when not in use



Nylon PG Thread Range

Part Number		Dimensions (mm)				Std Pack Qty
Black	Grey	d	D	H	h	
467427	467437	PG 7	15.0	12.5	8.5	50
467428	467438	PG 9	19.0	13.0	8.5	50
467429	467439	PG 11	22.0	13.0	9.0	50
467430	467440	PG 13.5	25.0	13.0	9.0	50
467431	467441	PG 16	27.0	15.0	10.5	50
467432	467442	PG 21	33.0	13.5	8.5	50
467433	467443	PG 29	44.0	16.0	11.5	25
467434	467444	PG 36	55.0	18.0	13.5	25
467435	-	PG 42	62.0	18.5	13.5	25
467436	467446	PG 48	68.0	19.5	14.5	25

Nylon Metric Thread Range

Part Number		Dimensions (mm)				Std Pack Qty
Black	Grey	d	D	H	h	
467447	467458	M12 x 1.5	15.0	12.5	8.5	50
467448	467459	M16 x 1.5	19.0	13.0	8.5	50
467450	467461	M20 x 1.5	25.0	13.0	9.0	50
467452	467463	M25 x 1.5	30.0	15.5	10.5	50
467454	467465	M32 x 1.5	38.0	16.0	10.5	25
467455	467466	M40 x 1.5	46.0	16.0	11.5	25
467456	467467	M50 x 1.5	56.0	18.0	13.5	25
467457	467468	M63 x 1.5	68.0	19.0	14.0	25

Brass PG Thread Range

Part Number	Dimensions (mm)				Std Pack Qty
	d	D	H	h	
490649	PG 7	14.0	8.0	5.5	50
490650	PG 9	17.0	9.0	6.0	50
490651	PG 11	20.0	9.0	6.0	50
490652	PG 13.5	22.0	9.5	6.5	50
490653	PG 16	24.0	9.5	6.5	50
490655	PG 29	39.5	13.0	7.5	25
490657	PG 42	55.5	16.0	9.5	25
490658	PG 48	64.5	17.5	9.5	25

Brass Metric Thread Range

Part Number	Dimensions (mm)				Std Pack Qty
	d	D	H	h	
490659	M12 x 1.5	14.0	7.0	5.0	50
490660	M16 x 1.5	18.0	8.0	6.0	50
490661	M20 x 1.5	22.0	8.0	6.5	50
490662	M25 x 1.5	27.0	10.0	7.0	50
490663	M32 x 1.5	34.0	11.0	8.0	25
490664	M40 x 1.5	44.0	13.0	5.0	25
490665	M50 x 1.5	54.0	19.5	10.5	25
490666	M63 x 1.5	67.0	15.0	10.5	25

Cable Entry System

Polyamide PA6 V-0

- Tool-free entry and connecting technology for machines and equipment
- Order plate and accompanying Grommet
- Protection grade: IP65
- Temperature range -30°C to 100°C

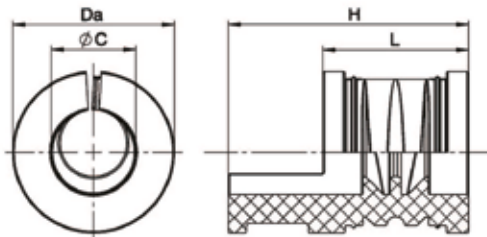
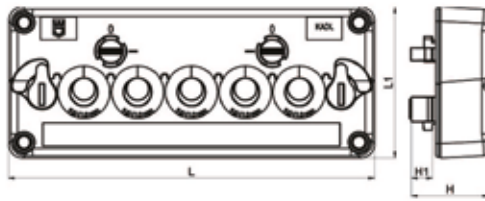


Plate only

Part Number	Hole size	Dimensions (mm)				Grommet holes	Pack Quantity
		L	L1	H	H1		
1334527	125 x 35	153	63	32.3	8.9	5	1
1334528	125 x 57.5	153	85.5	32.3	8.9	10	1
1334529	125 x 80	153	108	32.3	8.9	15	1
1334530	125 x 102.5	153	130.5	32.3	8.9	12	1
1334531	125 x 125	153	153	32.3	8.9	25	1

Grommet - TPETPV

Part Number	Dimensions (mm)				Pack Quantity
	C	L	H	Da	
1334532	3 - 5	20	33	22.2	10
1334533	5 - 7	20	33	22.2	10
1334534	7 - 9	20	33	22.2	10
1334535	9 - 11	20	33	22.2	10
1334536	11 - 13	20	33	22.2	10
1334537	13 - 15	20	33	22.2	10
1334538	15 - 16	20	33	22.2	10
1334539*	-	20	-	22.2	10

*Closed (without slot and bore)

CABLE ENTRY SYSTEMS

Cable Entry Plate

Polyamide PA6 V-0

- Tool-free connecting technology for cabling of machines and equipment
- Variety of grommet variations for a wide range of cable requirements
- Protection class: IP66
- Temperature range -30°C to 100°C



Part Number	Number of entries on the cable entry plate suitable for cable diameter (mm)										Pack Quantity	
	1.5 - 2.6	2.5 - 5.0	3.0 - 5.5	3.0 - 6.5	4.1 - 8.1	5.0 - 9.2	8.0 - 12.0	8.0 - 12.5	9.0 - 14.0	9.6 - 15.9		14.0 - 20.0
1334517	-	-	-	4	-	4	-	-	-	-	3	1
1334518	-	-	-	-	-	-	12	-	-	-	-	1
1334519	-	-	2	-	6	-	-	-	4	-	1	1
1334520	-	-	-	6	-	4	-	-	-	4	-	1
1334521	-	-	-	-	-	17	-	-	-	-	-	1
1334522	-	-	-	11	1	-	-	5	-	-	-	1
1334523	-	-	-	16	-	4	-	2	-	-	-	1
1334524	-	-	-	-	23	-	-	-	-	-	-	1
1334525	-	-	-	29	-	-	-	-	-	-	-	1
1334526	-	-	-	-	-	-	-	-	-	-	-	1

QUESTIONS? GIVE US A CALL

Our Customer Service advisors are here to help you find the right product for your application.

Call 0845 758 5070

www.essentracomponents.co.uk





**OVER
35,000
PRODUCTS
ONLINE**

**VISIT US
ONLINE!**

- ▶ Buy online
- ▶ Request free samples
- ▶ Easy to find products
- ▶ Download 3D CAD files

www.essentracomponents.co.uk

Conditions of sale can be found on our website - www.essentracomponents.co.uk