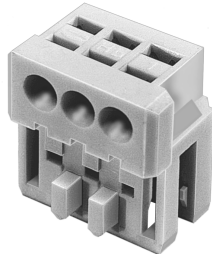
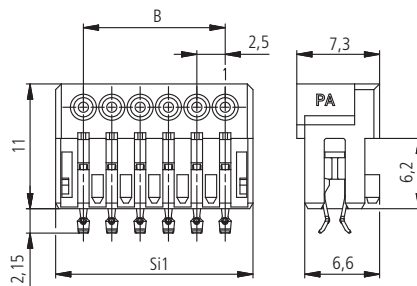


Serie MF 7238 für Einzelleiter zum direkten Stecken, mit PCB-Verrastung ohne Kammverlustr

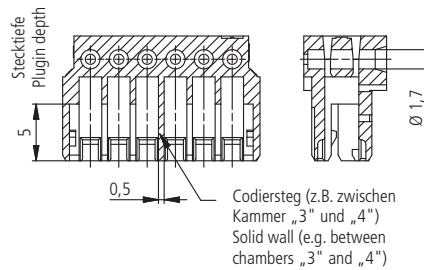
Series MF 7238 for single wire for direct connections, with PCB locking without loss of contact



Darstellung vormontiert  
Designation pre-assembled



Darstellung ohne Kontakte  
Designation without contacts



Ø 1,6 mm - alternativ  
Rastfenster 1,6<sup>+0,1</sup> x 0,6<sup>-0,1</sup>  
Ø 1,6 mm - alternative  
Lock window 1,6<sup>+0,1</sup> x 0,6<sup>+0,1</sup>

