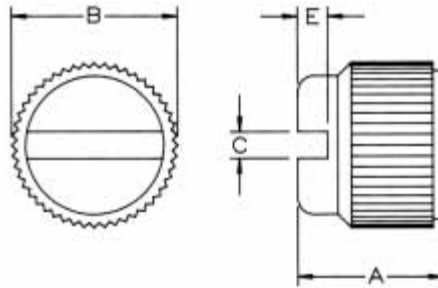


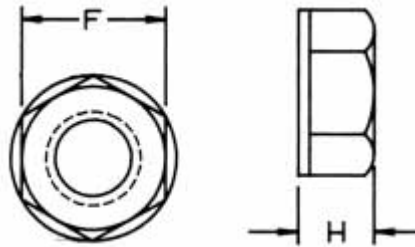
UNIVERSAL NUTS

STOCKED IN NYLON 6/6 UL 94V2 - CAN BE FURNISHED IN: ACETAL RESIN CELANESE CELCON M270 UL 94 HB



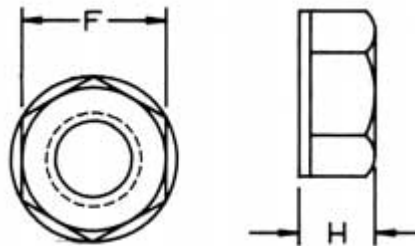
NYLON SLOTTED THUMB NUTS

ITEM NUMBER	DESCRIPTION	A Ref.	* +/- .010 tolerance column B			
			* B	C	E	
0500440SCN	440 SLOTTED THUMB NUT	.295 (7,49)	.317 (8,05)	.039 (9,91)	.070 (1,78)	
0500632SCN	632 SLOTTED THUMB NUT	.334 (8,48)	.348 (8,84)	.044 (1,12)	.051 (1,30)	
0500832SCN	832 SLOTTED THUMB NUT	.378 (9,60)	.381 (9,68)	.049 (1,25)	.059 (1,50)	
0501024SCN	1024 SLOTTED THUMB NUT	23/64 (9,12)	.400 (10,16)	.056 (1,43)	.068 (1,73)	
0501032SCN	1032 SLOTTED THUMB NUT	23/64 (9,12)	.400 (10,16)	.056 (1,43)	.068 (1,73)	
0525020SCN	1/4-20 SLOTTED THUMB NUT	.370 (9,40)	.478 (12,14)	.070 (1,78)	.088 (2,24)	



NYLON LOCK NUTS DESIGNED FOR STEEL SCREWS

ITEM NUMBER	DESCRIPTION	F	H
0700256LN	256 LOCK NUT	.180 (4,57)	.140 (3,56)
0700440LN	440 LOCK NUT	.250 (6,35)	.200 (5,08)
0700632LN	632 LOCK NUT	.305 (7,75)	.200 (5,08)
0700832LN	832 LOCK NUT	.335 (8,51)	.230 (5,84)
0701024LN	1024 LOCK NUT	.365 (9,27)	.250 (6,35)
0701032LN	1032 LOCK NUT	.365 (9,27)	.250 (6,35)
0725020LN	1/4-20 LOCK NUT	.425 (10,80)	.275 (6,99)



NYLON SELF - THREADING LOCK NUTS

DESIGNED FOR STEEL SCREWS

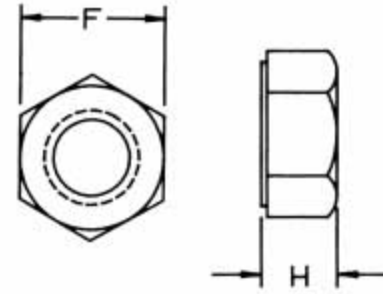
ITEM NUMBER	DESCRIPTION	F	H
0700256SLN	256 SELF - THREAD	.180 (4,57)	.140 (3,56)
0700440SLN	440 SELF - THREAD	.250 (6,35)	.200 (5,08)
0700632SLN	632 SELF - THREAD	.305 (7,75)	.200 (5,08)
0700832SLN	832 SELF - THREAD	.335 (8,51)	.230 (5,84)
0701024SLN	1024 SELF - THREAD	.365 (9,27)	.250 (6,35)
0701032SLN	1032 SELF - THREAD	.365 (9,27)	.250 (6,35)
0725020SLN	1/4-20 SELF - THREAD	.425 (10,80)	.275 (6,99)



ALL TOLERANCES ARE +/- .010

UNIVERSAL NUTS

STOCKED IN NYLON 6/6 UL 94V2 - CAN BE FURNISHED IN: ACETAL RESIN CELANESE CELCON M270 UL 94 HB

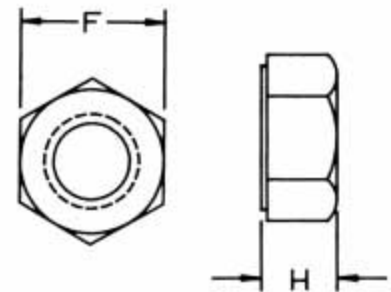


NYLON HEX NUTS

ITEM NUMBER	DESCRIPTION	F	H
0400256HN	256 HEX NUT	.180 (4,57)	.070 (1,78)
0400348HN	348 HEX NUT	.180 (4,57)	.070 (1,78)
0400440HN	440 HEX NUT	.250 (6,35)	.100 (2,54)
0400632HN	632 HEX NUT	.305 (7,75)	.120 (3,05)
0400640HN	640 HEX NUT	.305 (7,75)	.120 (3,05)
0400832HN	832 HEX NUT	.335 (8,51)	.130 (3,30)
0401024HN	1024 HEX NUT	.365 (9,27)	.135 (3,43)
0401032HN	1032 HEX NUT	.365 (9,27)	.135 (3,43)
0401224HN	1224 HEX NUT	.425 (10,80)	.207 (5,26)
0425020HN	1/4-20 HEX NUT	.433 (11,00)	.233 (5,92)
0425028HN	1/4-28 HEX NUT	.433 (11,00)	.235 (5,97)
0431218HN	5/16-18 HEX NUT	.500 (12,70)	.270 (6,86)
0431224HN	5/16-24 HEX NUT	.500 (12,70)	.270 (6,86)
0437516HN	3/8-16 HEX NUT	.560 (14,22)	.330 (8,38)
0437524HN	3/8-24 HEX NUT	.560 (14,22)	.330 (8,38)
0437532HN	3/8-32 HEX NUT	.560 (14,22)	.330 (8,38)
0443714HN	7/16-14 HEX NUT	.685 (17,40)	.380 (9,65)
0443720HN	7/16-20 HEX NUT	.685 (17,40)	.380 (9,65)
0450013HN	1/2-13 HEX NUT	.750 (19,05)	.430 (10,92)
0450020HN	1/2-20 HEX NUT	.750 (19,05)	.430 (10,92)
0462511HN	5/8-11 HEX NUT	.925 (23,40)	.550 (13,97)
0462518HN	5/8-18 HEX NUT	.925 (23,50)	.550 (13,97)
0468727HN	11/16-27 HEX NUT	1.00 (25,40)	.250 (6,35)
0475010HN	3/4-10 HEX NUT	1.10 (27,94)	.640 (16,26)
0487509HN	7/8-9 HEX NUT	1.28 (32,51)	.750 (19,05)
0410008HN	1-8 HEX NUT	1.47 (37,34)	.870 (22,10)



NYLON SPECIAL HEX NUTS



ITEM NUMBER	DESCRIPTION	F	H
0400256HNS	256 SPECIAL HEX NUT	.180 (4,57)	.090 (2,29)
0400440HNS	440 SPECIAL HEX NUT	.250 (6,35)	.124 (3,15)
0400632HNS	632 SPECIAL HEX NUT	.305 (7,75)	.146 (3,71)
0400832HNS	832 SPECIAL HEX NUT	.340 (8,64)	.170 (4,32)
0401024HNS	1024 SPECIAL HEX NUT	.365 (9,27)	.196 (4,98)
0401032HNS	1032 SPECIAL HEX NUT	.365 (9,37)	.196 (4,98)
0425020HNS	1/4-20 SPECIAL HEX NUT	.425 (10,80)	.258 (6,55)



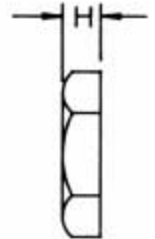
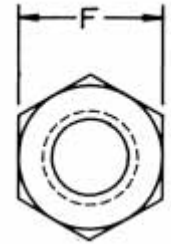
ALL TOLERANCES ARE +/- .010

UNIVERSAL NUTS

STOCKED IN NYLON 6/6 UL 94V2 - CAN BE FURNISHED IN: ACETAL RESIN CELANESE CELCON M270 UL 94 HB

NYLON HEX JAM NUTS

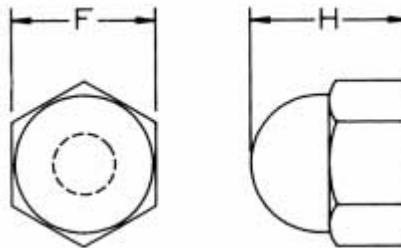
ITEM NUMBER	DESCRIPTION	F	H
0431218HJN	5/16-18 HEX JAM NUT	.500 (12,70)	.190 (4,83)
0431224HJN	5/16-24 HEX JAM NUT	.500 (12,70)	.190 (4,83)
0437516HJN	3/8-16 HEX JAM NUT	.500 (12,70)	.125 (3,18)
0437524HJN	3/8-24 HEX JAM NUT	.500 (12,70)	.125 (3,18)
0437532HJN	3/8-32 HEX JAM NUT	.500 (12,70)	.125 (3,18)
0437516HHJN	3/8-16 HEX JAM NUT SPEC.	.670 (17,02)	7/32 (5,56)
0443714HJN	7/16-14 HEX JAM NUT	.687 (17,45)	.375 (9,53)
0443720HJN	7/16-20 HEX JAM NUT	.687 (17,45)	.250 (6,35)
0446832HJN	15/32-32 HEX JAM NUT	.625 (15,88)	.125 (3,18)
0450013HJN	1/2-13 HEX JAM NUT	.687 (17,45)	.220 (5,59)
0450024HJN	1/2-24 HEX JAM NUT	.687 (17,45)	.220 (5,59)
0450028HJN	1/2-28 HEX JAM NUT	.660 (16,76)	.125 (3,18)
0456218HJN	9/16-18 HEX JAM NUT	.750 (19,05)	.250 (6,35)
0462511HJN	5/8-11 HEX JAM NUT	.930 (23,62)	.375 (9,53)
0462518HJN	5/8-18 HEX JAM NUT	.937 (23,80)	.375 (9,53)
0475010HJN	3/4-10 HEX JAM NUT	1.12 (28,50)	.250 (6,35)
0475016HJN	3/4-16 HEX JAM NUT	1.12 (28,50)	.250 (6,35)
0475027HJN	3/4-27 HEX JAM NUT	1.00 (25,40)	.125 (3,18)
0487514HJN	7/8-14 HEX JAM NUT	1.25 (31,75)	.340 (8,64)
0410008HJN	1-8 HEX JAM NUT	1.48 (37,59)	.410 (10,41)
0412527PJN	1/8-27 HEX JAM NUT	.56 (14,22)	.11 (2,79)
0425018PJN	1/4-18 HEX JAM NUT NPT	.740 (18,80)	.187 (4,75)
0437518PJN	3/8-18 HEX JAM NUT NPT	1.00 (25,40)	.280 (7,11)
0450014PJN	1/2-14 HEX JAM NUT NPT	1.25 (31,75)	.340 (8,64)
0475014PJN	3/4-14 HEX JAM NUT NPT	1.48 (37,59)	.410 (10,41)
0475014SJN	3/4-14 HEX JAM NUT NPS	1.48 (37,59)	.410 (10,41)
0425018SJN	1/4-18 HEX JAM NUT NPS	.687 (17,45)	.225 (5,72)
0437518SJN	3/8-18 HEX JAM NUT NPS	1.00 (25,40)	.280 (7,11)
0450014SJN	1/2-14 HEX JAM NUT NPS	1.25 (31,75)	.340 (8,64)
0475014SJN	3/4-14 HEX JAM NUT NPS	1.48 (37,59)	.410 (10,41)



TOLERANCES ARE +/- .010 ON "F" and "H" DIMENSIONS

NYLON LOCKING CAP NUTS

Similar to our standard cap nut, except with a molded-in locking thread. Use for applications which require higher torque, vibration resistance or a more secure assembly.



ITEM NUMBER	DESCRIPTION	F	H * REE
0500440LCN	440 LOCKING CAP NUT	.250 (6,35)	.280 (7,11)
0500632LCN	632 LOCKING CAP NUT	.305 (7,75)	.345 (8,76)
0500832LCN	832 LOCKING CAP NUT	.330 (8,38)	.375 (9,53)
0501024LCN	1024 LOCKING CAP NUT	.365 (9,27)	.400 (10,16)
0501032LCN	1032 LOCKING CAP NUT	.365 (9,27)	.400 (10,16)
0525020LCN	1/4-20 LOCKING CAP NUT	.425 (10,80)	.475 (12,07)
0531218LCN	5/16-18 LOCKING CAP NUT	.500 (12,70)	.530 (13,46)



TOLERANCES ARE +/- .010 ON "F" and "H" DIMENSIONS

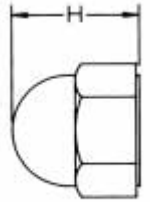
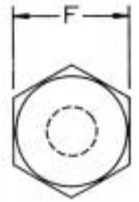
UNIVERSAL NUTS

STOCKED IN NYLON 6/6 UL 94V2 - CAN BE FURNISHED IN: ACETAL RESIN CELANESE CELCON M270 UL 94 HB

NYLON CAP NUTS

"F" AND "H" TOLERANCES +/- .010

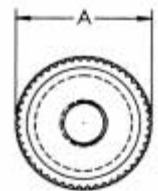
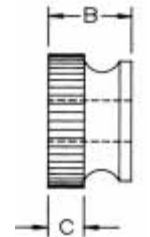
ITEM NUMBER	DESCRIPTION	F	H * REE
0500440CN	440 CAP NUT	.250 (6,35)	.280 (7,11)
0500632CN	632 CAP NUT	.305 (7,75)	.345 (8,76)
0500832CN	832 CAP NUT	.330 (8,38)	.375 (9,53)
0501024CN	1024 CAP NUT	.365 (9,27)	.400 (10,16)
0501032CN	1032 CAP NUT	.365 (9,27)	.400 (10,16)
0525020CN	1/4-20 CAP NUT	.425 (10,80)	.475 (12,07)
0525028CN	1/4-28 CAP NUT	.425 (10,80)	.475 (12,07)
0531218CN	5/16-18 CAP NUT	.500 (12,70)	.530 (13,46)
0531224CN	5/16-24 CAP NUT	.500 (12,70)	.530 (13,46)
0537516CN	3/8-16 CAP NUT	.560 (14,22)	.620 (15,75)
0537524CN	3/8-24 CAP NUT	.560 (14,22)	.620 (15,75)
0550013CN	1/2-13 CAP NUT	.750 (19,05)	.810 (20,57)
0562511CN	5/8-11 CAP NUT	.935 (23,75)	.970 (24,64)



NYLON KNURLED THUMB NUTS

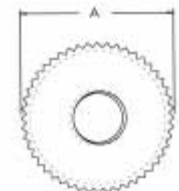
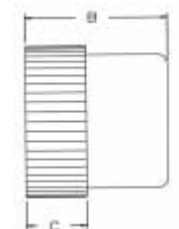
"A" AND "B" TOLERANCES +/- .010

ITEM NUMBER	DESCRIPTION	A	B	C
0800440TN	440 THUMB NUT	.300 (7,62)	.280 (7,11)	.120 (3,05)
0800632TN	632 THUMB NUT	.360 (9,14)	.275 (6,99)	.125 (3,18)
0800832TN	832 THUMB NUT	.425 (10,80)	.305 (7,75)	.140 (3,56)
0801024TN	1024 THUMB NUT	.425 (10,80)	.325 (8,26)	.140 (3,56)
0801032TN	1032 THUMB NUT	.425 (10,80)	.325 (8,26)	.140 (3,56)
0825020TN	1/4-20 THUMB NUT	.540 (13,72)	.365 (9,27)	.155 (3,94)
0831218TN	5/16-18 THUMB NUT	.612 (15,54)	.400 (10,16)	.170 (4,33)



NYLON KNURLED THUMB NUTS "A"

ITEM NUMBER	DESCRIPTION	A	B	C
0800440TNA	440 THUMB NUT "A"	.300 (7,62)	.280 (7,11)	.120 (3,05)
0800632TNA	632 THUMB NUT "A"	.360 (9,14)	.275 (6,99)	.125 (3,18)
0800832TNA	832 THUMB NUT "A"	.425 (10,80)	.305 (7,75)	.140 (3,56)
0801024TNA	1024 THUMB NUT "A"	.425 (10,80)	.325 (8,26)	.140 (3,56)
0801032TNA	1032 THUMB NUT "A"	.425 (10,80)	.325 (8,26)	.140 (3,56)
0825020TNA	1/4-20 THUMB NUT "A"	.540 (13,72)	.365 (9,27)	.155 (3,94)
0831218TNA	5/16-18 THUMB NUT "A"	.615 (15,62)	.385 (9,78)	.171 (4,34)
0837516TNA	3/8-16 THUMB NUT "A"	.687 (17,45)	.430 (10,92)	.187 (4,75)
0850013TNA	1/2-13 THUMB NUT "A"	.750 (19,05)	.468 (11,89)	.203 (5,16)

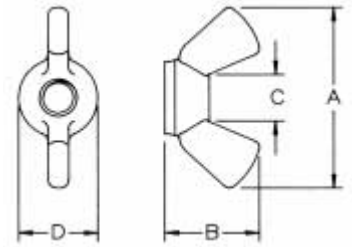


UNIVERSAL NUTS

STOCKED IN NYLON 6/6 UL 94V2 - CAN BE FURNISHED IN: ACETAL RESIN CELANESE CELCON M270 UL 94 HB

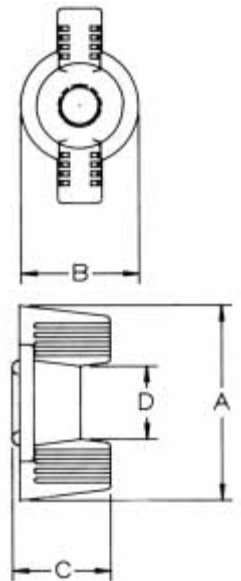
NYLON WING NUTS

ITEM NUMBER	DESCRIPTION	A		B		C		D	
0600440WN	440 WING NUT	.90	(22,86)	.48	(12,19)	.23	(5,84)	.40	(10,16)
0600632WN	632 WING NUT	.90	(22,86)	.48	(12,19)	.23	(5,84)	.40	(10,16)
0600832WN	832 WING NUT	.90	(22,86)	.48	(12,19)	.23	(5,84)	.40	(10,16)
0601024WN	1024 WING NUT	.90	(22,86)	.48	(12,19)	.23	(5,84)	.40	(10,16)
0601032WN	1032 WING NUT	.90	(22,86)	.48	(12,19)	.23	(5,84)	.40	(10,16)
0601024WNA	1024 WING NUT-A	1.10	(27,94)	.63	(16,00)	.30	(7,62)	.56	(14,22)
0601032WNA	1032 WING NUT-A	1.10	(27,94)	.63	(16,00)	.30	(7,62)	.56	(14,22)
0625020WNA	1/4-20 WING NUT-A	1.10	(27,94)	.63	(16,00)	.30	(7,62)	.56	(14,22)
0625028WNA	1/4-28 WING NUT-A	1.10	(27,94)	.63	(16,00)	.30	(7,62)	.56	(14,22)
0625020WN	1/4-20 WING NUT	1.36	(34,54)	.70	(17,78)	.36	(9,14)	.65	(16,51)
0625028WN	1/4-28 WING NUT	1.38	(35,05)	.72	(18,29)	.36	(9,14)	.65	(16,51)
0631218WN	5/16-18 WING NUT	1.38	(35,05)	.72	(18,29)	.36	(9,14)	.65	(16,51)
0637516WN	3/8-16 WING NUT	1.38	(35,05)	.72	(18,29)	.36	(9,14)	.65	(16,51)
0637524WN	3/8-24 WING NUT	.140	(35,56)	.72	(18,29)	.36	(9,14)	.64	(16,26)
0643714WN	7/16-14 WING NUT	1.76	(44,70)	.90	(22,86)	.56	(14,22)	.85	(21,59)
0650013WN	1/2-13 WING NUT	1.76	(44,70)	.90	(22,86)	.56	(14,22)	.85	(21,59)
0656212WN	9/16-12 WING NUT	1.76	(44,70)	.90	(22,86)	.56	(14,22)	.85	(21,59)



NYLON DECO WING NUTS

ITEM NUMBER	DESCRIPTION	A		B		C		D	
0600440DECOWN	440 DECO WING NUT	5/8"	(15,88)	3/8"	(9,53)	5/16"	(7,94)	15/64"	(5,94)
0600632DECOWN	632 DECO WING NUT	5/8"	(15,88)	3/8"	(9,53)	5/16"	(7,94)	15/64"	(5,94)
0600832DECOWN	832 DECO WING NUT	5/8"	(15,88)	3/8"	(9,53)	5/16"	(7,94)	15/64"	(5,94)
0601024DECOWN	1024 DECO WING NUT	7/8"	(22,23)	1/2"	(12,70)	7/16"	(11,10)	5/16"	(7,93)
0601032DECOWN	1032 DECO WING NUT	7/8"	(22,23)	1/2"	(12,70)	7/16"	(11,10)	5/16"	(7,93)
0625020DECOWN	1/4-20 DECO WING NUT	1-11/64"	(29,74)	5/8"	(15,88)	17/32"	(13,49)	3/8"	(9,53)
0637524DECOWN	3/8-24 DECO WING NUT	1-9/16"	(39,67)	63/64"	(25,0)	29/64"	(11,51)	21/32"	(16,66)



NYLON LOCKING DECO WING NUTS

Similar to our standard cap nut, except with a molded-in locking thread. Use for applications which require higher torque, vibration resistance or a more secure assembly.

ITEM NUMBER	DESCRIPTION	A		B		C		D	
0600440DLWN	440 LOCKING DECO WING NUT	5/8"	(15,88)	3/8"	(9,53)	5/16"	(7,94)	15/64"	(5,94)
0600632DLWN	632 LOCKING DECO WING NUT	5/8"	(15,88)	3/8"	(9,53)	5/16"	(7,94)	15/64"	(5,94)
0600832DLWN	832 LOCKING DECO WING NUT	5/8"	(15,88)	3/8"	(9,53)	5/16"	(7,94)	15/64"	(5,94)
0601024DLWN	1024 LOCKING DECO WING NUT	7/8"	(22,23)	1/2"	(12,70)	7/16"	(11,10)	5/16"	(7,93)
0601032DLWN	1032 LOCKING DECO WING NUT	7/8"	(22,23)	1/2"	(12,70)	7/16"	(11,10)	5/16"	(7,93)
0625020DLWN	1/4-20 LOCKING DECO WING NUT	1-11/64"	(29,74)	5/8"	(15,88)	17/32"	(13,49)	3/8"	(9,53)
*0631218DLWN	5/16-18 LOCKING DECO WING NUT	1-9/16"	(39,69)	63/64"	(25,00)	29/64"	(11,51)	39/64"	(15,48)



*Part is flush across wings