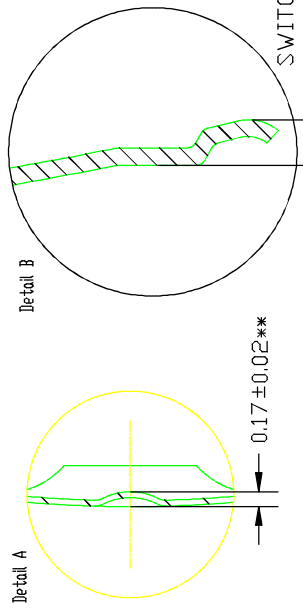


Measuring method
Domes are placed on a metal plate. After 10 actuations, we measure the mechanical characteristics, with a spherical actuator ø3mm.

For dimple dome : Travel (4) = Height (3) - 0.17**



DOME REFERENCE XXX		220	280	340	420
①	TRIP FORCE (g) [FORCE D'APPUY]	220 +/-30	280 +/-30	340 +/-40	420 +/-40
②	REBOUND FORCE (g) [FORCE DE REBOUND]	85 +/-20	90 +/-30	100 +/-30	120 +/-40
③	HEIGHT (mm) [HAUTEUR]	0.65 +/-0.10	0.75 +/-0.10	0.80 +/-0.10	0.80 +/-0.10
④	TOTAL TRAVEL (mm) [COURSE]	* 0.55 +/-0.10	* 0.65 +/-0.10	* 0.70 +/-0.10	* 0.70 +/-0.10
⑤	FOOT PRINT (mm) [PORTEE DE CONTACT]	11.70 +/-0.20			
⑥	DIAMETER (mm) [DIAMETRE]	12.20 ⁺⁰ _{-0.20}			
⑦	SWITCH/AIR (mm)	0.25 +/-0.07			
⑧	SQUARE SIZE (mm) [CARRE]	9.90 +/-0.10			
⑨	CLICK RATIO (%) [EFFET TACTILE]	40 - 70%		50 - 80 %	

* Only for domes without dimple, for dimple domes see detail A
Storage temperature [temperature de stockage] : -55°/125°C
Operating temperature [temperature d'utilisation] : -40°/105°C
Switching voltage [tension commutable] : 0.1 to 100 V Dc
Switching current [courant commutable] : 0.005 to 100 ma DC
Switching capacity [puissance commutable] : 1 WATT
Actuation life [duree de vie] : up to 5 millions (see specification drawing), Actuator ø12mm teflon
Plating [traitement de surface] : mini 0.1 micron

Material		Thermic treatment		Nickel plated + optional Au		Weight	
S	DM 14 026	02/04/14	NP	Plating		Weight	
R	DM 11 132	27/03/12	CG	Scale		Designation:	
Q	DM 08 053	06/05/08	JR	5:1		SWITCH/AIR METAL DOME	
P	DM 07 131	01/10/07	JR	Drawing Number :		N12.2-4L-(D)-XXX-(21/31)	
D	DM 07 118	23/07/07	JR	File name		X:\Methodes\12 - Domes\Plans clients	
N	DM 06 039	27/02/06	JR	Origin		-	
M	DM 05 130	01/12/05	JR	Date		-	
L	DM 05 104	06/10/05	JR	Modification		-	
Rep.				Name		-	
AISI 301		-		-		-	
Date		02/04/14		-		-	
Drawn by		NP		-		-	
checked by		AV		-		-	
NICOMATIC		-		-		-	
ZI 74890 Bors-en-Chablais		-		-		-	
Tel(33) 04 50 36 13 85		-		-		-	