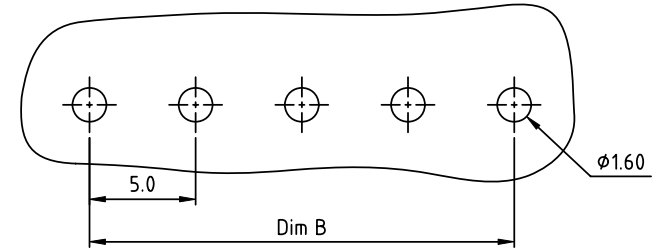
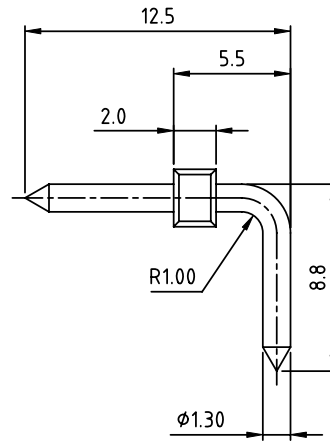
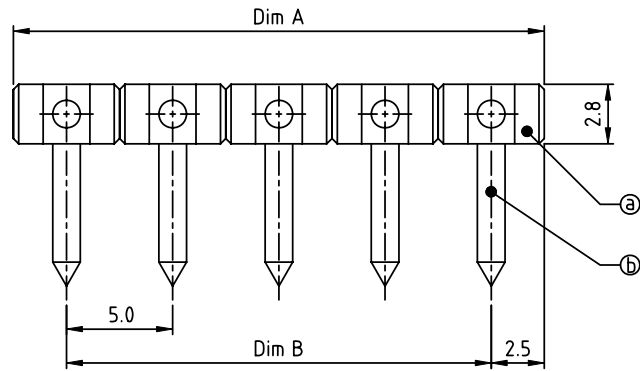


PRODUCT NUMBER	PITCH
OPxx0Fx000J0G	5.00mm



RECOMMENDED P.C.B LAYOUT
TOP VIEW

Material:

- Item (a) Terminal(housing): Thermoplastic (UL94V-0)
- Item (b) Contact pin: Brass, Tin or Au plated.

Electrical:

- Voltage rating: 300V
- Current rating: 10A
- Withstanding Voltage: 1.6KV
- Operating temperature: -40°C to +115°C
- Soldering temperature: 260°C±5°C/5 Sec
- Safety Approval: cULus

N = Number of poles
Dim L=Nx5.0
Dim B=(N-1)x5.0

poles	Tolerance
2-5p	±0.10
6-9p	±0.15
10-13p	±0.20
14-17p	±0.25
18-21p	±0.30
22-24p	±0.40

PART NO.: OP xx 0 F x 0 00J0 G

Solid block
 No. of poles
 02 2 poles
 03 3 poles
 ...
 24 24 poles

0 Tin plating 120u" Min
 1 Gold plating 10u"
 2 Gold flash

RoHS compliant
 (lead<4%)
 In copper Alloy

mat'l. code		surface ASME Y14.5	tolerance ASME Y14.5	projection MM	product family TERMINAL BLOCK
ltr	ecn no	dr	date	angles X°±1'	tolerances unless otherwise specified
				scale	title TERMINAL BLOCK
				dr	PLUGGABLE SOCKET, RIGHT ANGLE, BEND PIN
				enr	sheet 1 of 1 size
				chr	OPxx0Fx000J0G
				appd	A4
					type CUSTOMER Drawing
sheet index	revision sheet	A	1		

SIGN	DATE	DESCRIPTION
△	02/07'06	Part No. changed
△	1/31'07	Soldering temperature changed from 245° to 250°
△	04/18'11	Dimension is changed
△	11/17'14	Soldering temperature changed from 250° to 260°

THIS IS CAD DRAWING, DO NOT REVISE MANUALLY!!!

Material:

- Item ㉑ Terminal(housing): PA66 (UL94V-0)
- Item ㉒ Contact pin: Brass

Electrical: cULus

- Voltage rating: 150V
- Current rating: 10A
- Withstanding Voltage: 1.3KV
- Operating temperature: -40°C to +115°C
- Soldering temperature: 260°C±5°C/5 Sec
- Safety Approval:
- Critical dimension: ▽
- Part No.:

OP xx 2 B x 0 xxxx G

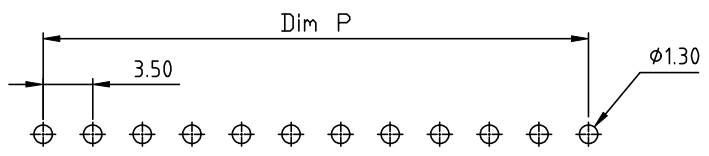
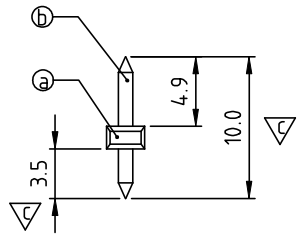
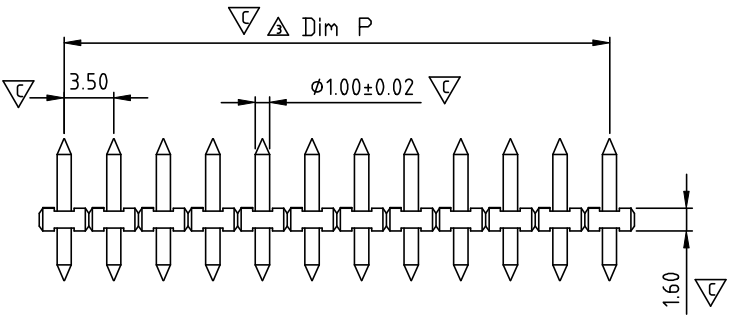
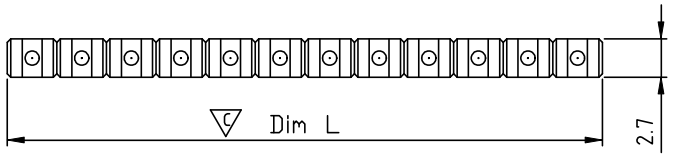
POLES ——— G RoHS compliant (lead<4%) In copper Alloy

02 pole

 24 pole

0 Tin
 1 Gold plating 10u"
 2 Gold flash

0000: Standard
 Any special item b
 customer request.
 please contact sa
 department.



P.C.B. LAYOUT

Poles	02	03	04	05	06	07	08	09	10	11	12	13
Dim L	7.00	10.50	14.00	17.50	21.00	24.50	28.00	31.50	35.00	38.50	42.00	45.50
Dim P	3.50	7.00	10.50	14.00	17.50	21.00	24.50	28.00	31.50	35.00	38.50	42.00
TOL	±0.10				±0.15				±0.20			
Poles	14	15	16	17	18	19	20	21	22	23	24	
Dim L	49.00	52.50	56.00	59.50	63.00	66.50	70.00	73.50	77.00	80.50	84.00	
Dim P	45.50	49.00	52.50	56.00	59.50	63.00	66.50	70.00	73.50	77.00	80.50	
TOL	±0.25				±0.30							

ANYTEK

CUSTOMER CO

ALL RIGHTS RESERVED. REPRODUCTION OR ISSUE TO THIRD PARTY FORM WHATEVER IS NOT PERMITTED WITHOUT WRITTEN AUTHORITY. PROPRIETOR: PROPERTY OF ANYTEK TECHNOLOGY CO., LTD

TITLE	OP 3.5 Series (配用)			
PART NO.	OPxx2Bx0xxxxG	DWG NO.	80P0501	
APPROVED	CHECKED	DESIGNED	DRAWN	CUST NO.
		Evan 2014.11.17	Evan 2014.11.17	
SHEET: 01/01			UNIT: mm	
			SCALE: NONE	
			REV.: F	