

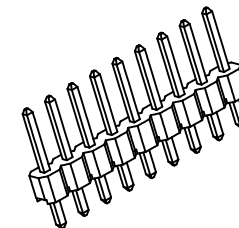
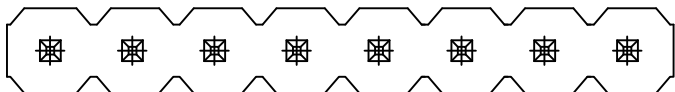
1

2

3

4

5



Specifications:

Current rating:3A AC/DC

Voltage Rating:250V AC/DC

Contact Resistance:20m ohm Max

Insulation Resistance:1000M ohm Min

Withstanding Voltage:600V AC For one Minute

Operating Temperature Range:-40°C To +105°C

Materials:

Insulator:PBT (UL94V-0)

Insulator Color:Black

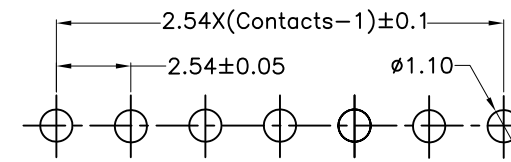
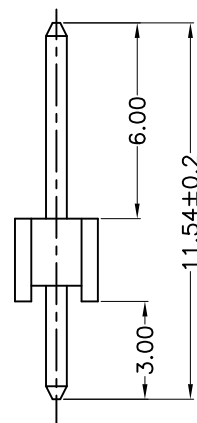
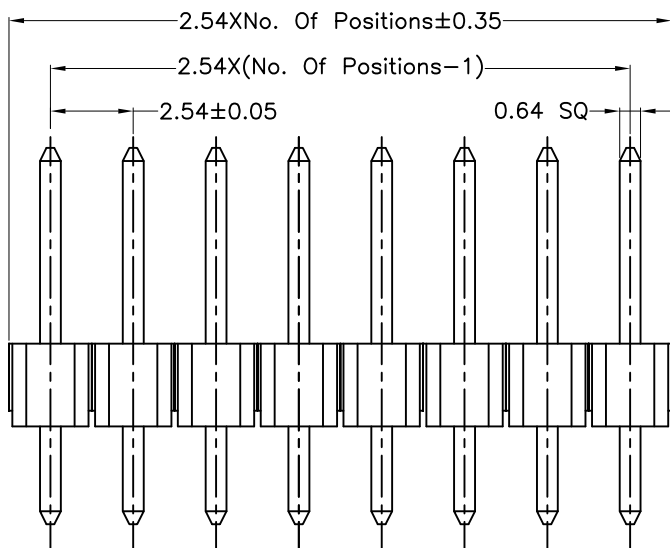
Contact:Copper Alloy

Plating:Gold Plated

How To Order


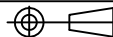
2211S-XXG

G:Gold Plated
No.of Positions
Straight Type



PCB Layout

RoHS Compliant

F				DRAWN:	GENERAL TOLERANCE:	 Neltron Industrial Co., Ltd.	DESCRIPTION: 2.54mm Pin Header Single Row Straight Type	SIZE A4
E			Cel King	.X=±0.20 .XX=±0.15				
D			CHECKED:	UNIT: MM				
C			Jeremy Liu	SCALE: 1:1				
B			APPROVAL:	SHEET: 1 / 1	PART NO:	2211S-XXG		
A	25-Oct-2005	(PC0001)	Cel King	Mike Wu	PROJECTION:			
REV	DATE	FILE	BY					