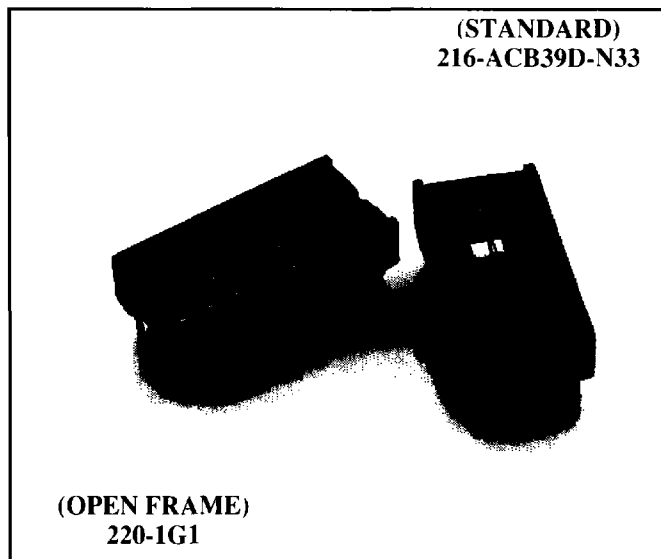


200-ACB | Stamped Single Beam Contact Series | Capacitor Sockets

The Augat 200 Series Socket combined with a decoupling capacitor provides the following advantages:

- An easily accessible top-loaded capacitor facilitates field serviceability.
- Available with or without capacitor.
- Capacitor socket is automatically insertable.
- Can be combined with press-fit leads to retain socket in the board and to eliminate clinching.
- Reduction of 12 to 15% of PCB real estate.
- Improved electrical performance resulting from shorter capacitor leads.
- Reduction in component insertion costs. When inserting socket, two components are being inserted at the same time.
- Reduction in purchasing and inventory costs. It is only necessary to purchase and inventory one product instead of two.
- Automatic or manual insertion of the capacitor without solder is accomplished with a socket's IDC contact system.
- Available in 14, 16, 18 and 20 positions.



TYPICAL PERFORMANCE CHARACTERISTICS

CONTACT RESISTANCE	10 milliohms
TERMINATION RESISTANCE (CAPACITOR)	5.5 milliohms
CONTACT RATING	2 Amps
CAPACITANCE (ADJACENT CONTACTS-MAX.)	5 pF Per MIL-STD-202, Method 305
SALT SPRAY	Passed MIL-STD-1344, Method 1001.1
HUMIDITY	Passed MIL-STD-1344, Method 1002.2
VIBRATION	Passed MIL-STD-1344, Method 2005.1, Condition III, 15Gs
SHOCK	Passed MIL-STD-1344, Method 2004.1, Condition G, 100 Gs
DURABILITY	Passed MIL-STD-1344, Method 2016
TEMPERATURE CYCLING	Passed MIL-STD-1344, Method 1003.1
INSULATION RESISTANCE	2x10 ⁹ Megohms Per MIL-STD-1344, Method 3003.1
DIELECTRIC WITHSTANDING VOLTAGE (DWV)	600 Volts (RMS) Per MIL-STD-1344, Method 3001
* OPERATION TEMPERATURE	+10°C to +85°C
SOLDERABILITY	Passed MIL-STD-202, Method 208
CONTACT RETENTION	340 Grams Minimum
CLIP RETENTION	1.48 Kilograms (3.25 Lbs.) Min.
CAPACITOR RETENTION	489 Grams (1.07 Lbs.) Min Per Lead
CAPACITOR INSERTION FORCE	9.83 Kilograms (21.5 Lbs.) Max.
NORMAL FORCE	218 Grams With a .008" x 0.015" IC Lead (Typ.)
INSERTION FORCE	169 Grams (6.0 oz.) Average With a 0.013" x 0.020" Polished Steel Pin
WITHDRAWAL FORCE	43 Grams (1.5 oz.) Average With a .008" x .015" Polished Steel Pin

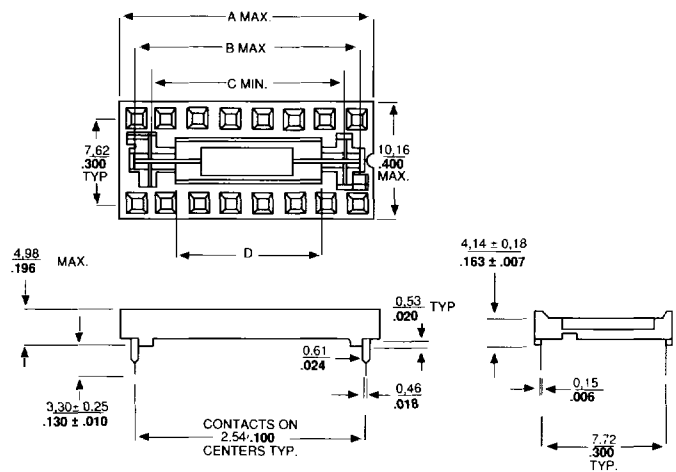
*This Temperature Range Applies To The Capacitor Only. Operation Temperature Of The Socket Without The Capacitor Is -55 °C To +105°C.

200 ACB Series

STANDARD CONFIGURATIONS

NO. OF CONTACTS	A	B	C	D
	mm inch	mm inch	mm inch	$\pm 0,13$.005
14	$\frac{17,78}{.700}$	$\frac{14,99}{.590}$	$\frac{12,85}{.506}$	$\frac{9,02}{.355}$
16	$\frac{20,32}{.800}$	$\frac{17,53}{.690}$	$\frac{15,39}{.606}$	$\frac{11,56}{.455}$
18	$\frac{22,86}{.900}$	$\frac{20,07}{.790}$	$\frac{17,93}{.706}$	$\frac{15,10}{.555}$
20	$\frac{25,40}{1.000}$	$\frac{22,61}{.890}$	$\frac{20,47}{.806}$	$\frac{16,64}{.655}$

DIMENSIONS mm/in



MATERIAL SPECIFICATIONS

INSULATOR Thermoplastic Polyester Rated 94V-0
 CONTACTS Beryllium Copper (Per QQ-C-533) or Phosphor Bronze (Per QQ-B-750)
 PLATING Tin/Lead (Per MIL-P-81728)

APPLICATION DIMENSIONS

- PCB Thickness: Standard .062" and .092"
- PCB Hole Sizes: .035" ± .003"
- IC Pin Dimension Range: .008" x .015" through .015" x .023", .115" Min. Length

PART NUMBER DESIGNATIONS

No. OF CONTACTS	CONTACT MAT'L	OPEN FRAME STYLE	.01µf Capacitor		.10µf Capacitor		.33µf Capacitor	
			Standard P.C Tail	*.035" Retention Pin	Standard P.C Tail	*.035" Retention Pin	Standard P.C Tail	*.035" Retention Pin
14	Phosphor Bronze	214-1G7	214-ACB29D-N01	214-ACB129D-N01	214-ACB29D-N10	214-ACB129D-N10	214-ACB29D-N33	214-ACB129D-N33
	BeCu	214-1G1	214-ACB39D-N01	214-ACB139D-N01	214-ACB39D-N10	214-ACB139D-N10	214-ACB39D-N33	214-ACB139D-N33
16	Phosphor Bronze	216-1G7	216-ACB29D-N01	216-ACB129D-N01	216-ACB29D-N10	216-ACB129D-N10	216-ACB29-N33	216-ACB129D-N33
	BeCu	216-1G1	216-ACB39D-N01	216-ACB139D-N01	216-ACB39D-N10	216-ACB139D-N10	216-ACB39D-N33	216-ACB139D-N33
18	Phosphor Bronze	218-1G7	218-ACB29D-N01	218-ACB129D-N01	218-ACB29D-N10	218-ACB129D-N10	218-ACB29D-N33	218-ACB129D-N33
	BeCu	218-1G1	218-ACB39D-N01	218-ACB139D-N01	218-ACB39D-N10	218-ACB139D-N10	218-ACB39D-N33	218-ACB139D-N33
20	Phosphor Bronze	220-1G7	220-ACB29D-N01	220-ACB129D-N01	220-ACB29D-N10	220-ACB129D-N10	220-ACB29D-N33	220-ACB129D-N33
	BeCu	220-1G1	220-ACB39D-N01	220-ACB139D-N01	220-ACB39D-N10	220-ACB139D-N10	220-ACB39D-N33	220-ACB139D-N33

*Press-fit retention feature for .035" ± .003" Plated-Through Hole.