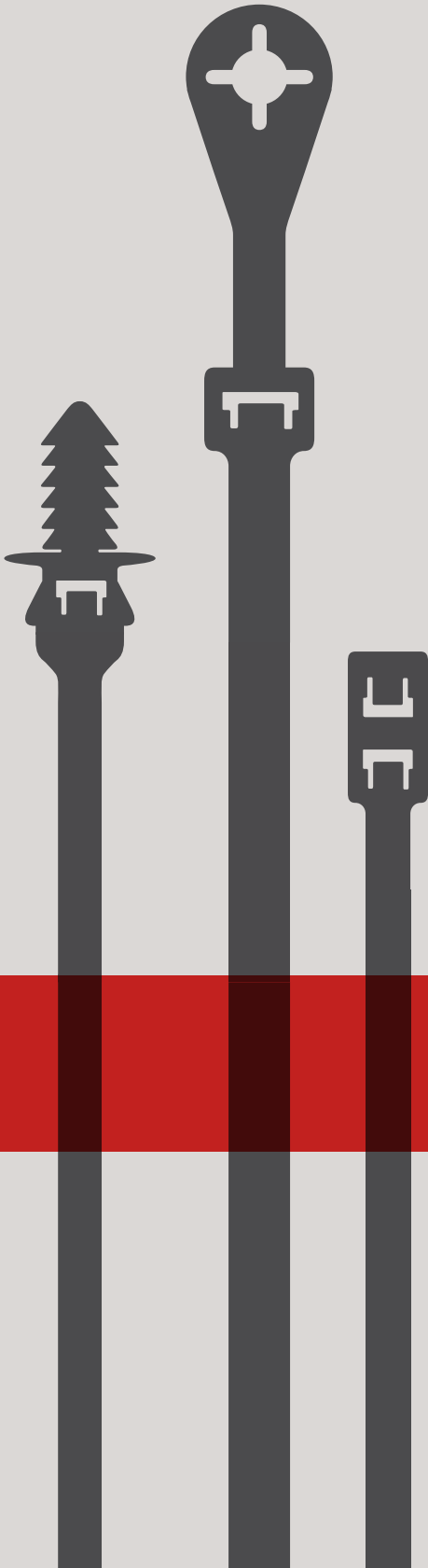




Fastener
Solutions

Avery Dennison Cable Tie Fastener Guide



Intelligent, creative and sustainable solutions that elevate brands and accelerate performance throughout the global retail supply chain

AVERY DENNISON CABLE TIES

PART #	STYLE	PAGE	PART #	STYLE	PAGE
08056	11"/279.4mm Black Heat Stabilized (HS)	9	10029	3/4"/19.05mm Rubber Based Adhesive Mount	20
08286	11"/279.4mm Black Weather Resistant (WR)	9	10030	1/25.4mm Rubber Based Adhesive Mount	20
08318	7.5"/190.5mm Black WR Screw Mount	18	10031	4"/101.6mm White ID	21
08319	8"/230.2mm Natural	13	10035	14.5"/368.3mm Natural Screw Mount	18
08320	8"/230.2mm Natural Nylon - Secur-A-Tie	13	10036	15"/381mm Natural	9
08350	5"/127mm Natural - Secur-A-Tie	13	10037	15"/381mm Black Weather Resistant	9
08354	5"/127mm Red - Secur-A-Tie	13	10038	14.5"/368.3mm Natural	10
08355	5"/127mm Yellow - Secur-A-Tie	13	10039	14.5"/368.3mm Black Weather Resistant	10
08356	5"/127mm Blue - Secur-A-Tie	13	10040	14.5"/368.3mm Black WR Screw Mount	18
08357	5"/127mm Green - Secur-A-Tie	13	10044	Cradle Mount Small #4 Screw	20
08358	5"/127mm Orange - Secur-A-Tie	13	10045	Cradle Mount Medium #8 Screw	20
08359	5"/127mm Black - Secur-A-Tie	13	10046	Cradle Mount Large #10 Screw	20
08362	5"/127mm Natural Polypropylene - Secur-A-Tie	13	10049	34"/838.2mm Natural	10
08376	5"/139.7mm Natural	8	10050	34"/838.2mm Black Weather Resistant	10
08377	8"/203.2mm Natural	8	10056	Push-In Mount with 1/4"/6.35mm Hole	20
08378	14.5"/368.3mm Natural	8	10079	Cradle Mount Large HS with 1/4"/6.35mm Screw	20
08380	8"/203.2mm Black Weather Resistant	8	10146	8"/203.2mm Red	13
08382	14.5"/368.3mm Black Weather Resistant	10	10147	8"/203.2mm Orange	13
08383	5.5"/139.7mm Natural	8	10148	8"/203.2mm Yellow	13
08384	5.5"/139.7mm Black Weather Resistant	8	10149	8"/203.2mm Green	13
08385	8"/203.2mm Natural	8	10150	8"/203.2mm Blue	13
08386	8"/203.2mm Black Weather Resistant	8	10154	8"/203.2mm Black	13
08387	7.5"/190.5mm Natural	9	10155	8"/203.2mm White	13
08388	7.5"/190.5mm Black Weather Resistant	9	10325	8"/203.2mm Slim Line	15
08400	5.5"/139.7mm Black Heat Stabilized	8	10326	8"/203.2mm Black Slim Line	15
08401	8"/203.2mm Black Heat Stabilized	8	10327	8"/203.2mm Black WR Slim Line	15
08402	7.5"/190.5mm Black Heat Stabilized	9	10328	8"/203.2mm Slim Line	15
08403	14.5"/368.3mm Black Heat Stabilized	10	10330	8"/203.2mm Black WR Slim Line	15
08404	4"/101.6mm Black Heat Stabilized	8	10336	15"/381mm Black HS Slim Line	15
08412	4"/101.6mm Natural ID	21	10338	15"/381mm Natural Slim Line	15
08413	7.5"/190.5mm Natural ID	21	10339	15"/381mm Black HS Slim Line	15
08414	7.5"/190.5mm Natural ID Push Mount	29	10344	15"/381mm Natural Super Bar-Lok	11
08415	7.5"/190.5mm Natural Screw Mount	18	10345	15"/381mm Black HS Super Bar-Lok	11
08416	15"/381mm Black Heat Stabilized	9	10350	11"/279.4mm Natural Screw Mount	18
08417	4"/101.6mm Natural ID	21	10351	11"/279.4mm Black HS Screw Mount	18
08419	7.5"/190.5mm Natural ID	21	10352	11"/279.4mm Black WR Screw Mount	18
08426	14.5"/368.3mm Natural Screw Mount	18	10354	11"/279.4mm Black WR Screw Mount	18
08427	15"/381mm Natural	9	10361	7.5"/190.5mm Natural Releasable	17
08428	15"/381mm Black Weather Resistant	9	10362	7.5"/190.5mm Black HS Releasable	17
08431	5.5"/139.7mm Black Weather Resistant	8	10363	7.5"/190.5mm Black WR Releasable	17
08432	4"/101.6mm Natural	8	10364	7.5"/190.5mm Natural Releasable	17
08433	4"/101.6mm Black Weather Resistant	8	10366	7.5"/190.5mm Black WR Releasable	17
08434	4"/101.6mm Natural	8	10367	11"/279.4mm Natural Releasable	17
08435	4"/101.6mm Black Weather Resistant	8	10368	11"/279.4mm Black HS Releasable	17
08436	7.5"/190.5mm Natural	9	10369	11"/279.4mm Black WR Releasable	17
08437	7.5"/190.5mm Black Weather Resistant	9	10370	11"/279.4mm Natural Releasable	17
08441	14.5"/368.3mm Black HS Screw Mount	18	10391	6"/152.4mm Natural Slim Line	15
08443	7.5"/190.5mm Black HS Screw Mount	18	10392	6"/152.4mm Black HS Slim Line	15
08444	7.5"/190.5mm Black WR Screw Mount	18	10393	6"/152.4mm Black WR Slim Line	15
08445	7.5"/190.5mm Black HS Push Mount	29	10394	6"/152.4mm Natural Slim Line	15
08457	Identification Plate	20	10396	6"/152.4mm Black WR Slim Line	15
08461	3/4"/19.05mm Acrylic Adhesive Mount	20	10406	8"/203.2mm Black HS Stopper	16
08462	1/25.4mm Acrylic Adhesive Mount	20	10408	15"/381mm Black Heat Stabilized	9
08463	1/25.4mm Plain Black Mount	20	10424	7.5"/190.5mm Natural Double Head	16
08470	7"/177.8mm Natural	12	10425	7.5"/190.5mm Black HS Double Head	16
08471	11"/279.4mm Natural	12	10426	7.5"/190.5mm Black WR Double Head	16
08472	7"/177.8mm Black Heat Stabilized	12	10428	7.5"/190.5mm Black HS Double Head	16
08473	11"/279.4mm Black Heat Stabilized	12	10430	11"/279.4mm Natural Double Head	16
08476	7"/177.8mm Natural	12	10431	11"/279.4mm Black HS Double Head	16
08477	11"/279.4mm Natural	12	10432	11"/279.4mm Black WR Double Head	16
08478	7"/177.8mm Black Heat Stabilized	12	10606	21"/533.4mm Natural	10
08479	11"/279.4mm Black Heat Stabilized	12	10607	21"/533.4mm Black Heat Stabilized	10
08484	7.5"/190.5mm Natural Screw Mount	18	10608	21"/533.4mm Black Weather Resistant	10
08508	4"/101.6mm Red	8	10612	24"/609.6mm Natural	10
08582	4"/101.6mm Orange	8	10613	24"/609.6mm Black Heat Stabilized	10
08583	4"/101.6mm Yellow	8	10614	24"/609.6mm Black Weather Resistant	10
08584	4"/101.6mm Green	8	10618	28"/711.2mm Natural	10
08587	4"/101.6mm Blue	8	10619	28"/711.2mm Black Heat Stabilized	10
08600	11"/279.4mm Natural	9	10620	28"/711.2mm Black Weather Resistant	10
08664	8"/203.2mm Green	8	10660	11"/279.4mm Black HS Stopper	16
08671	8"/203.2mm Blue	8	10673	5"/127mm Natural - Secur-A-Tie	13
08690	8"/203.2mm Red	8	10691	4"/101.6mm Black HS Winged Push Mount	17
08782	8"/203.2mm Yellow	8	10700	Merchandise Pairing Tie	16
08859	11"/279.4mm Natural	9	20064-O	5"/127mm Black Security Tie	14
08930	11"/279.4mm Black Weather Resistant	9	20064-B	5"/127mm Blue Security Tie	14
10001	7.5"/190.5mm Natural Super Bar-Lok	11	20064-G	5"/127mm Green Security Tie	14
10003	7.5"/190.5mm Black Super Bar-Lok	11	20064-R	5"/127mm Red Security Tie	14
10006	15"/381mm Natural Super Bar-Lok	11	20064-P	5"/127mm Purple Security Tie	14
10008	15"/381mm Black Super Bar-Lok	11	20064-Y	5"/127mm Purple Security Tie	14
10027	Tie Anchor Base #8 Screw	20	20064-ORG	5"/127mm Orange Security Tie	14
10028	Tie Anchor Base #10 Screw	20			

CONTRACTOR GRADE

PART #	STYLE		PAGE	PART #	STYLE		PAGE
CT0080N018NM	3.125"	Natural	34	CT0380N120NC	15"	Natural	36
CT0100N018NM	4"	Natural	34	CT0380N120KC	15"	Black	36
CT0100N018NC	4"	Natural	34	CT0380W120KC	15"	Weather Resistant	36
CT0100N018KM	4"	Black	34	CT0550N175NC	21.6875"	Natural	36
CT0100N018KC	4"	Black	34	CT0550W175KC	21.6875"	Weather Resistant	36
CT0100W018KM	4"	Weather Resistant	34	CT0610N175NC	24"	Natural	36
CT0100W018KC	4"	Weather Resistant	34	CT0610W175KC	24"	Weather Resistant	36
CT0140N040NM	5.5"	Natural	34	CT0710N175NC	28"	Natural	36
CT0140N040NC	5.5"	Natural	34	CT0710W175KC	28"	Weather Resistant	36
CT0140N040KC	5.5"	Black	34	CT0915N175NL	36"	Natural	36
CT0140N040KM	5.5"	Black	34	CT0915W175KL	36"	Weather Resistant	36
CT0140W040KM	5.5"	Weather Resistant	34	CT1220N175NL	48"	Natural	36
CT0140W040KC	5.5"	Weather Resistant	34	CT1220W175KL	48"	Weather Resistant	36
CT0140N040OM	5.5"	Orange	34	CT0140N018NM	5.5"	Natural	36
CT0140N040BM	5.5"	Blue	34	CT0165N018NC	6.5"	Natural	36
CT0140N040GC	5.5"	Green	34	CT0165N018NM	6.5"	Natural	36
CT0200N040NM	8"	Natural	35	CT0165W018KC	6.5"	Weather Resistant	36
CT0200N040NC	8"	Natural	35	CT0165N018BC	6.5"	Blue	36
CT0200N040KM	8"	Black	35	CT0165N018GC	6.5"	Green	36
CT0200N040KC	8"	Black	35	CT0165N018YC	6.5"	Yellow	36
CT0200W040KM	8"	Weather Resistant	35	CT0200N018NC	8"	Natural	36
CT0200W040KC	8"	Weather Resistant	35	CT0200N018KM	8"	Black	36
CT0200N040BC	8"	Intermediate (Blue)	35	CT0200N018KC	8"	Black	36
CT0200N040GC	8"	Intermediate (Green)	35	CT0200N018BC	8"	Blue	36
CT0200N040RC	8"	Intermediate (Red)	35	CT0200N018NM	8"	Natural	36
CT0190N050NM	7.5"	Natural	35	CT0200W018KC	8"	Natural	36
CT0190N050NC	7.5"	Natural	35	CT0200W018KM	8"	Natural	36
CT0190N050KM	7.5"	Black	35	PM0200N50NM	8"	Natural	37
CT0190N050KC	7.5"	Black	35	SM0150N040NC	6"	Natural	37
CT0190W050KM	7.5"	Weather Resistant	35	SM0150W040KC	6"	Weather Resistant	37
CT0190W050KC	7.5"	Weather Resistant	35	SM0200N050NC	8"	Natural	37
CT0280N050NM	11"	Natural	35	SM0200W050KC	8"	Weather Resistant	37
CT0280N050NC	11"	Natural	35	SM0370N050NC	14.5"	Natural	37
CT0280N050KM	11"	Black	35	SM0370W050KC	14.5"	Weather Resistant	37
CT0280N050KC	11"	Black	35	SM0380N120NC	15"	Natural	37
CT0280W050KM	11"	Weather Resistant	35	SM0380W120KC	15"	Weather Resistant	37
CT0280W050KC	11"	Weather Resistant	35	RT0150N050KC	6"	Flat (Black)	37
CT0370N050NM	14.5"	Natural	35	RT0300N050KC	11.875"	Flat (Black)	37
CT0370N050NC	14.5"	Natural	35	IDP100N018NC	4"	Natural, Ext.-Perpendicular Flag	37
CT0370N050KC	14.5"	Black	35	IDF110N018NM	4"	Natural, Flag (ext. beyond head)	37
CT0370W050KM	14.5"	Weather Resistant	35	IDI200N050NC	8"	Natural, In-line Flag	37
CT0370W050KD	14.5"	Weather Resistant	35	CM1510N	3/5" x 2/5"	Saddle Mount	37
CT0370W050KC	14.5"	Weather Resistant	35	CM2316N	7/8" X 5/8"	Saddle Mount	37
CT0430N050NC	17"	Natural	35	CM1919N	3/4" x 3/4"	Acrylic Adhesive Mount (Natural)	37
CT0430W050KC	17"	Weather Resistant	35	CM2121K	13/16" x 13/16"	Acrylic Adhesive Mount (Black)	37
CT0450N050NC	17.75"	Natural	35	CM2828N	1" x 1"	Acrylic Adhesive Mount (Natural)	37
CT0500N050NC	19.6875"	Natural	35	CM2828K	1" x 1"	Acrylic Adhesive Mount (Black)	37
CT0340N120NC	13.5"	Natural	36	CM3838N	1-1/2" x 1-1/2"	Acrylic Adhesive Mount (Natural)	37
CT0340W120KC	13.5"	Weather Resistant	36	CM3838K	1-1/2" x 1-1/2"	Acrylic Adhesive Mount (Black)	37
				FTG6	Disposable Tool		37

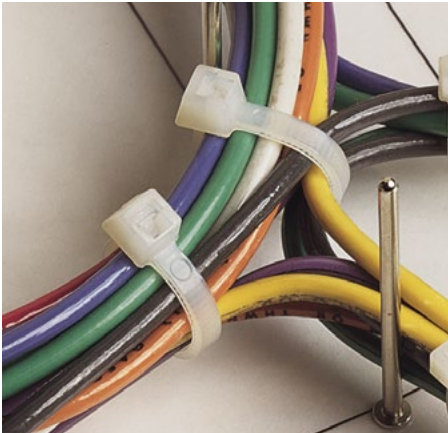
TABLE OF CONTENTS

CORE	
Miniature Ties	8
Intermediate Ties	8
Standard Ties	9
Heavy Duty Ties	10
Extra Heavy Duty Ties	10
Super Bar-Lok Ties	11
Ladder Ties	12
Security Ties	13-14
Slim Line Ties	15
Specialty Ties	16-17
Mount Ties	17-18
Adhesive Backed Mount Ties	19
Accessories	20
Identification Ties	21
Installation Tools	22-24
Military Specifications	38
Cross Reference Guide	39-43

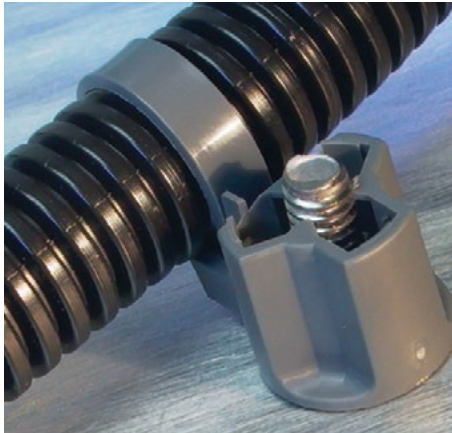
AUTOMOTIVE	
Hole Ties	27-30
Standard Fir Tree	27
Curve Tie Fir Tree	27
Fir Tree on Strap	28
Off-Set Fir Tree	28-29
Arrow Head Push Mount	29
Winged Arrow Head Push Mount	30
Arrow Slot Tie	30
Stud Ties	31-32
Threaded Stud	31
Threaded Mount	31
Off-Set Mount	32
Screw Mount	32
Connector Ties	32
Specialty Ties	33

EVERY DENNISON CABLE TIES

APPLICATIONS



Wire and Cable Bundling (Harnessing)



Weld Stud



Security Tagging



Securing Items in Packages



Mounting Applications



Mounting Applications

CABLE TIE PRODUCT CERTIFICATIONS

AVERY DENNISON® CABLE TIE PRODUCTS MEET SPECIFICATIONS WHERE APPLICABLE

All Avery Dennison Fastener Solutions Division plastic products, including: Cable Ties, Swiftachment, Plastic and Elastic Staple products contain no prohibited, restricted, or reportable substance of concern including;

- Bisphenol A -PBBs -PBBEs -OBDEs -PBDEs -Phthalates
- Butylated hydroxytoluene BHT

DECLARATION OF COMPLIANCE FROM AVERY DENNISON

Avery Dennison hereby declares that our products and raw materials comply with 2005/84/EC and the most updated QSOP 3610 non-phthalates requirement.



RoHS Recast
Compliant with
CPSIA-HR4040



Avery Dennison Fastener Solutions Division certifies that all plastic products, including: Cable Ties, Swiftachment, Plastic & Elastic Staple products, are in compliance with Directive 2011/65/EU of the European Parliament on the restriction of the use of certain hazardous substances in electrical and electronic equipment (also known as "RoHS Recast"). Our products are also in compliance with the Consumer Product Safety Improvement Act of 2008 (CPSIA - HR4040).

Avery Dennison Fastener Solutions Division plastic products, including: Cable Ties, Plastic & Elastic Staple products, are in compliance to Regulation (EC) No 1907/2006 of the European Parliament and of the Council of 18 December 2006 concerning the Registration, Evaluation, Authorization and Restriction of Chemicals (REACH). Products do not contain any of the Substances of Very High Concern (SVHC).

ISO 9001:2008

Certified by



Certification Body of TUV SUD AMERICA INC. certifies Avery Dennison implemented QMS in accordance with ISO 9001:2008 for Design and Manufacture of Plastic Cable Tie Fastener Products.

ISO/TS 16949:2009 THIRD EDITION 2009-06-15

Certified by



Certification Body of TUV SUD Management Service GmbH certifies Avery Dennison has established a QMS for Design and Manufacture of Plastic Cable Tie Fastener Products for the Automotive Industry (with Product Design as per Chapter 7.3).

MILITARY SPECIFICATION

Certified by



Department of the Navy
AS23190

Avery Dennison received the NOTIFICATION OF RETENTION OF QUALIFICATION TO AS23190 on the continuation of supplying Avery Dennison Cable Tie Fasteners to the Department of the Navy.

Avery Dennison Fastener Division's plastic products are in conformance to the Frank Act—Conflict Materials. None of the listed materials are in any of our Cable Tie products.

Avery Dennison has no toxic substances in its products or packaging.



GeSI
GLOBAL e-SUSTAINABILITY INITIATIVE



CABLE TIE BASICS AND KEY PERFORMANCE CRITERIA

CABLE TIES CRITERIA

POLYPROPYLENE

Used for applications requiring lower tensile strength.

NYLON RESINS

NATURAL

Used indoor, general applications.
Temperature range: -40° F (-40° C) to 185° F (85° C)

WEATHER RESISTANT (WR)

Used for outdoor applications—greater resistance to ultraviolet light. Cables contain 2% carbon black.
Temperature range: -40° F (-40° C) to 176° F (80° C)

HEAT STABILIZED (HS)

Used for higher temperature applications.
Temperature range: -40° F (-40° C) to 221° F (105° C)

IMPACT MODIFIED, HEAT STABILIZED (IMHS)

Used for automotive applications with wide temperature fluctuations. Temperature range: -40° F (-40° C) to 239° F (115° C)

COLORS

4" and 8" Cable ties, Security Ties as well as Secur-a-Tie and Secure-a-Seal™ are available in colors. Colors available by special request

OVER 30 YEARS OF INNOVATIVE PRODUCT DEVELOPMENT

UNIQUE STRETCHING PROCESS

- SUPER BAR-LOK®
- LADDER TIE
- SECUR-A-TIE®

Avery Dennison has set the toughest standards in the industry. Cable ties meet all appropriate qualifications for military specifications and UL.

THE BAG

- Packaged at a specific moisture content
- Bags should not be opened prior to actual application. Bags should be resealed between use
- Once applied, moisture changes will not affect performance

THE BAG LABEL

Cable ties are packaged "Standard" and "Bulk"

- Standard—100 packs
- Bulk—1,000 packs

Avery Dennison Cable Tie Bags include:

- Maximum bundle diameter ranging from 7/8"-12"
- Military Specification number if applicable
- Strap ID code
 - Miniature
 - Intermediate
 - Standard
 - Heavy-duty
 - Extra heavy-duty

UL—SYMBOL

Verification that the part is listed by the Underwriters Laboratory

MILITARY SPECIFICATION NUMBER

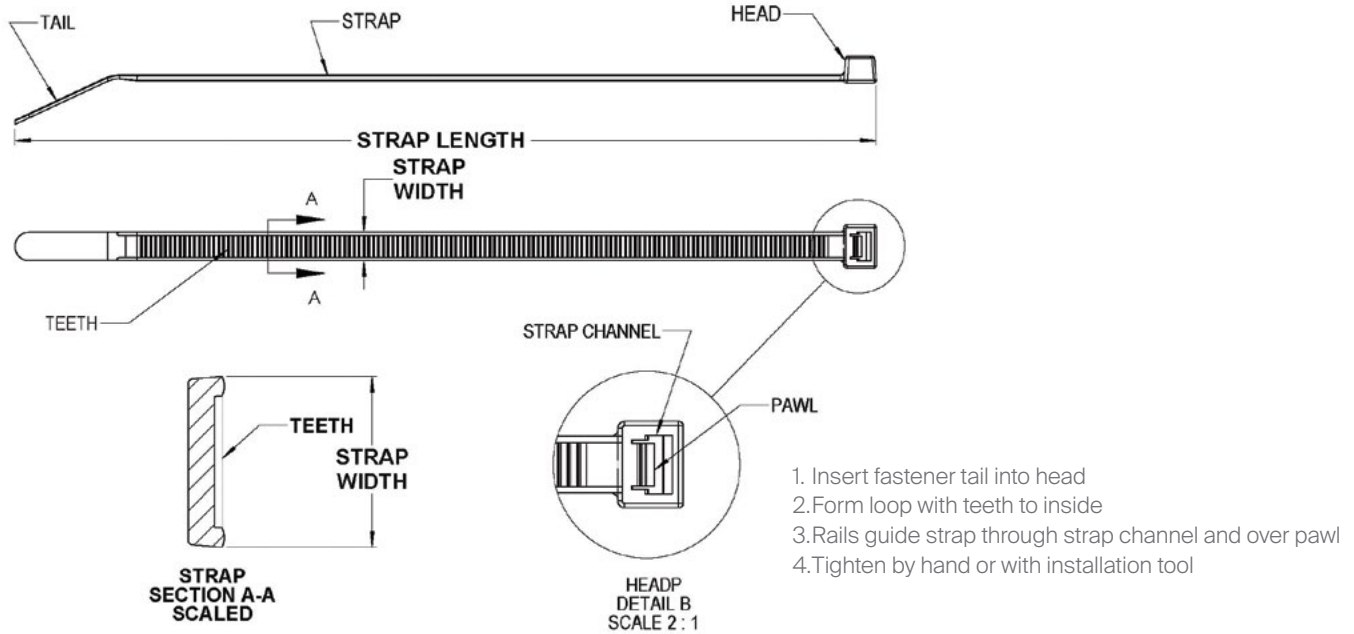
If applicable

STRAP ID CODE

Either miniature, intermediate, standard, heavy-duty, or extra heavy duty

CABLE TIE BASICS AND KEY PERFORMANCE CRITERIA

BASIC COMPONENTS OF A STANDARD AVERY DENNISON CABLE TIE



CABLE TIE KEY PERFORMANCE CRITERIA

MINIMUM LOOP TENSILE STRENGTH

Performance characteristic. The minimum amount of force expressed in pounds that cause the assembled tie to fail. Higher tensile strength - big or heavy loads, lower tensile—small to medium and light loads

MATERIAL

Avery Dennison cable ties are manufactured from Type 6/6 Nylon—noted for toughness, impact strength, resistance to abrasion and chemicals. Material of choice per military specifications.

BUNDLE DIAMETER

Maximum and minimum bundle diameters are size extremes in which the tie will function properly. They are set according to industry standards established by military specifications.

Cable ties are used in a variety of applications in many industries including: Electrical, electronics, CATV, HVAC, transportation, telecommunications, packaging, retail, beverage, automotive etc.

Avery Dennison cable ties are available in sizes from 4" to 48" and in three different materials with tensile strength ratings up to 175 lbs.

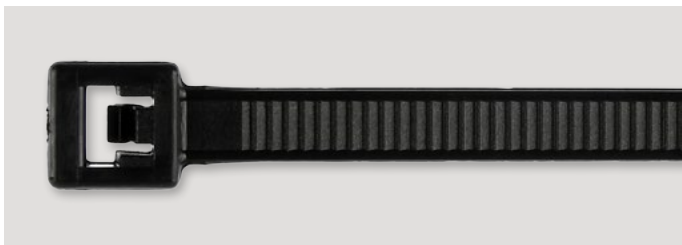
STANDARD TIES

MINIATURE 4" / 101.6mm



WIDTH	.095"	2.41mm
THICKNESS	.041"	1.04mm
BUNDLE DIAMETER MIN. – MAX.	1/16"-7/8"	1.59mm-22.23mm
MIN. LOOP TENSILE STRENGTH	18 lbs.	8.17kg

INTERMEDIATE 5.5" / 139.7mm



WIDTH	.130"	3.30mm
THICKNESS	.048"	1.22mm
BUNDLE DIAMETER MIN. – MAX.	1/16"-1-1/4"	1.59mm-31.75mm
MIN. LOOP TENSILE STRENGTH	40 lbs.	18.14kg

INTERMEDIATE 8" / 203.2mm



WIDTH	.130"	3.30mm
THICKNESS	.054"	1.37mm
BUNDLE DIAMETER MIN. – MAX.	1/16"-2-1/8"	1.59mm-53.98mm
MIN. LOOP TENSILE STRENGTH	40 lbs.	18.14kg

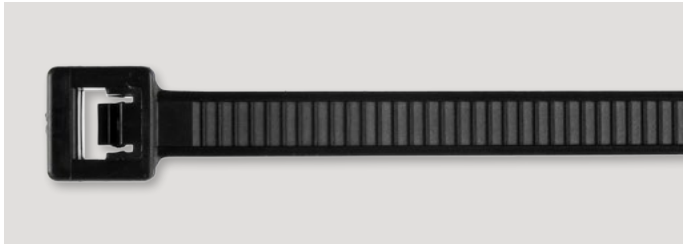
PART #	MATERIAL STYLE	MILITARY SPECIFICATION	QTY. PER BAG	QTY. PER CASE
08432	Natural	MS-3367-4-9	1,000	25M
08434	Natural	MS-3367-4-9	100	5M
08433	Black weather resistant	MS-3367-4-0	1,000	25M
08435	Black weather resistant	MS-3367-4-0	100	5M
08404	Black heat stabilized		1,000	25M
08508	Red	MS-3367-4-2	1,000	10M
08582	Orange	MS-3367-4-3	1,000	10M
08583	Yellow	MS-3367-4-4	1,000	10M
08584	Green	MS-3367-4-5	1,000	10M
08587	Blue	MS-3367-4-6	1,000	10M

*Ford is a registered trademark of the Ford Motor Company.
Chrysler is a registered trademark of the Chrysler Corporation.

PART #	MATERIAL STYLE	MILITARY SPECIFICATION	QTY. PER BAG	QTY. PER CASE
08376	Natural	MS-3367-5-9	1,000	5M
08383	Natural	MS-3367-5-9	100	5M
08431	Black weather resistant	MS-3367-5-0	1,000	5M
08384	Black weather resistant	MS-3367-5-0	100	5M
08400	Black heat stabilized		1,000	5M

PART #	MATERIAL STYLE	MILITARY SPECIFICATION	QTY. PER BAG	QTY. PER CASE
08377	Natural	MS-3367-5-9	1,000	5M
08385	Natural	MS-3367-5-9	100	5M
08380	Black weather resistant	MS-3367-5-0	1,000	5M
08386	Black weather resistant	MS-3367-5-0	100	5M
08401	Black heat stabilized		1,000	5M
08690	Red	MS-3367-5-2	1,000	5M
08671	Blue	MS-3367-5-6	1,000	5M
08782	Yellow	MS-3367-5-4	1,000	5M
08664	Green	MS-3367-5-5	1,000	5M

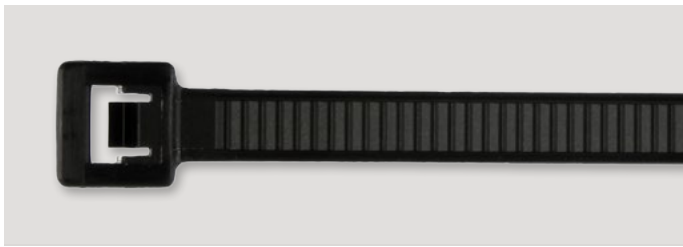
STANDARD
7.5" / 190.5mm



WIDTH	.177"	4.50mm
THICKNESS	.050"	1.27mm
BUNDLE DIAMETER MIN. – MAX.	1/16"-1-3/4"	1.59mm-44.45mm
MIN. LOOP TENSILE STRENGTH	50 lbs.	22.68kg

PART #	MATERIAL STYLE	MILITARY SPECIFICATION	QTY. PER BAG	QTY. PER CASE
08387	Natural	MS-3367-1-9	1,000	5M
08436	Natural	MS-3367-1-9	100	5M
08388	Black weather resistant	MS-3367-1-0	1,000	5M
08437	Black weather resistant	MS-3367-1-0	100	5M
08402	Black heat stabilized		1,000	5M

STANDARD
11" / 279.4mm



WIDTH	.177"	4.50mm
THICKNESS	.053"	1.35mm
BUNDLE DIAMETER MIN. – MAX.	1/16"-3"	1.59mm-76.2mm
MIN. LOOP TENSILE STRENGTH	50 lbs.	22.68kg

PART #	MATERIAL STYLE	MILITARY SPECIFICATION	QTY. PER BAG	QTY. PER CASE
08600	Natural	MS-3367-7-9	1,000	5M
08859	Natural	MS-3367-7-9	100	5M
08286	Black weather resistant	MS-3367-7-0	1,000	5M
08930	Black weather resistant	MS-3367-7-0	100	5M
08056	Black heat stabilized		1,000	5M

STANDARD
15" / 381mm



WIDTH	.177"	4.50mm
THICKNESS	.053"	1.35mm
BUNDLE DIAMETER MIN. – MAX.	1/16"-4"	1.59mm-101.6mm
MIN. LOOP TENSILE STRENGTH	50 lbs.	22.68kg

PART #	MATERIAL STYLE	MILITARY SPECIFICATION	QTY. PER BAG	QTY. PER CASE
10036	Natural	MS-3367-2-9	500	5M
08427	Natural	MS-3367-2-9	100	1M
10037	Black weather resistant	MS-3367-2-0	500	5M
08428	Black weather resistant	MS-3367-2-0	100	1M
10408	Black heat stabilized		500	5M
08416	Black heat stabilized		100	1M

HEAVY DUTY AND EXTRA HEAVY DUTY TIES



HEAVY DUTY 14.5" / 368.3mm

WIDTH	.251"	6.38mm
THICKNESS	.074"	1.88mm
BUNDLE DIAMETER MIN. – MAX.	3/16"–4"	4.76mm–101.6mm
MIN. LOOP TENSILE STRENGTH	120 lbs.	54.43kg

21" / 533.4mm

WIDTH	.303"	7.70mm
THICKNESS	.075"	1.91mm
BUNDLE DIAMETER MIN. – MAX.	1/4"– 6"	4.76mm–152.4mm
MIN. LOOP TENSILE STRENGTH	120 lbs.	54.43kg

24" / 609.6mm

WIDTH	.303"	7.70mm
THICKNESS	.075"	1.91mm
BUNDLE DIAMETER MIN. – MAX.	1/4"–7"	4.76mm–177.8mm
MIN. LOOP TENSILE STRENGTH	120 lbs.	54.43kg

28" / 711.2mm

WIDTH	.303"	7.70mm
THICKNESS	.075"	1.91mm
BUNDLE DIAMETER MIN. – MAX.	1/4"–8"	4.762mm–203.2mm
MIN. LOOP TENSILE STRENGTH	120 lbs.	54.43kg

EXTRA HEAVY DUTY 34" / 863.6mm

WIDTH	.350"	8.89mm
THICKNESS	.086"	2.18mm
BUNDLE DIAMETER MIN. – MAX.	1/4"–10"	4.76mm–254mm
MIN. LOOP TENSILE STRENGTH	175 lbs.	79kg

PART #	MATERIAL STYLE	MILITARY SPECIFICATION	QTY. PER BAG	QTY. PER CASE
10038	Natural	MS-3367-3-9	100	1M
08378	Natural	MS-3367-3-9	50	1M
10039	Black weather resistant	MS-3367-3-0	100	1M
08382	Black weather resistant	MS-3367-3-0	50	1M
08403	Black heat stabilized		100	1M

PART #	MATERIAL STYLE	MILITARY SPECIFICATION	QTY. PER BAG	QTY. PER CASE
10606	Natural	MS-3367-3-9	50	1M
10608	Black weather resistant	MS-3367-3-0	50	1M
10607	Black heat stabilized		50	1M

PART #	MATERIAL STYLE	MILITARY SPECIFICATION	QTY. PER BAG	QTY. PER CASE
10612	Natural	MS-3367-3-9	50	1M
10614	Black weather resistant	MS-3367-3-0	50	1M
10613	Black heat stabilized		50	1M

PART #	MATERIAL STYLE	MILITARY SPECIFICATION	QTY. PER BAG	QTY. PER CASE
10618	Natural	MS-3367-6-9	50	1M
10620	Black weather resistant	MS-3367-6-0	50	1M
10619	Black heat stabilized		50	1M

PART #	MATERIAL STYLE	QTY. PER BAG	QTY. PER CASE
10049	Natural	50	500
10050	Black weather resistant	50	500

SUPER BAR-LOK® TIES

SUPER BAR-LOK 7.5" / 190.5mm



WIDTH	.195"	4.95mm
THICKNESS	.038"	.97mm
BUNDLE DIAMETER MIN. – MAX.	1/16"-1-3/4"	1.59mm-44.45mm
MIN. LOOP TENSILE STRENGTH	50 lbs.	22.68kg

PART #	MATERIAL STYLE	MILITARY SPECIFICATION	QTY. PER BAG	QTY. PER CASE
10001	Natural	MS-3367-1-9	1,000	5M
10003	Black heat stabilized	MS-3367-1-0	1,000	5M

SUPER BAR-LOK 15" / 381mm



WIDTH	.195"	4.95mm
THICKNESS	.038"	.97mm
BUNDLE DIAMETER MIN. – MAX.	1/16"-4"	1.59mm-101.6mm
MIN. LOOP TENSILE STRENGTH	50 lbs.	22.68kg

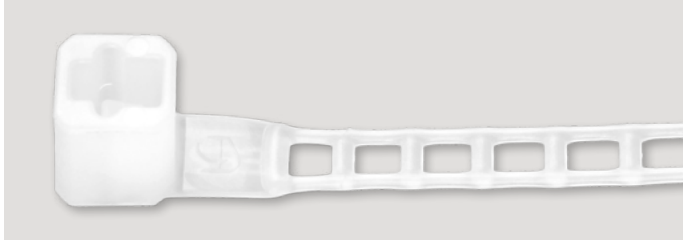
PART #	MATERIAL STYLE	MILITARY SPECIFICATION	QTY. PER BAG	QTY. PER CASE
10344	Natural	MS-3367-2-9	500	5M
10006	Natural	MS-3367-2-9	100	1M
10345	Black heat stabilized	MS-3367-2-0	500	5M
10008	Black heat stabilized	MS-3367-2-0	100	1M

SUPER BAR-LOK® OUTPERFORMS ANYTHING THE COMPLETION HAS TO OFFER

- **Highest Tensile Strength per Cross Section**
-Exceeds military specification tensile strength test of 50 lbs. Applications where extra strength is needed with minimum cross section.
- **More Resistant to Cyclic Shock Fatigue**
-Survives up to 70% longer than conventional solid ties when cyclically loaded in a looped configuration from 0 to 60 lbs. and back to 0 lbs. at a frequency of 1 cycle per second.
- **Virtually No Creep**
-Does not loosen or relax even under high heat, humidity or vibration.
- **Lighter and More Flexible**
-Natural fit for aerospace, marine, aviation and automotive industries
- **Highest Petrochemical Resistance**
-Remains unaffected in applications where grease, oil and fuels are present.
- **More Resistant to Environmental Extremes**
-Resistant to extreme temperatures, ultraviolet light and salt water spray.
- **Mil Spec and UL Approved**

LADDER TIES

LADDER STYLE 7" / 177.8mm



WIDTH	.140"	3.56mm
THICKNESS	.040"	1.02mm
BUNDLE DIAMETER MIN. – MAX.	1/16"-1-3/4"	1.59mm-44.45mm
MIN. LOOP TENSILE STRENGTH	40 lbs.	18.14kg

PART #	MATERIAL STYLE	MILITARY SPECIFICATION	QTY. PER BAG	QTY. PER CASE
08470	Natural		1,000	5M
08476	Natural		100	5M
08472	Black heat stabilized		1,000	5M
08478	Black heat stabilized		100	5M

LADDER STYLE 11" / 279.4mm



WIDTH	.140"	3.56mm
THICKNESS	.040"	1.02mm
BUNDLE DIAMETER MIN. – MAX.	1/16"-3"	1.59mm-76.2mm
MIN. LOOP TENSILE STRENGTH	40 lbs.	18.14kg

PART #	MATERIAL STYLE	MILITARY SPECIFICATION	QTY. PER BAG	QTY. PER CASE
08471	Natural		1,000	5M
08477	Natural		100	5M
08473	Black heat stabilized		1,000	5M
08479	Black heat stabilized		100	5M

ECO FRIENDLY 6/6 NYLON LADDER TIES

- Uses 60% less material when compared to a solid standard tie
- Weighs as much as 60% less when compared to a solid standard tie equivalent
- Save on shipping. The case of Ladder Ties are as much as 17% lighter. The individual bags as much as 5% lighter
- Forty percent of previously used nylon 6/6 material is used in the manufacturing process
- Consistently performs higher than the 40lb. tensile strength specification

When compared to its standard equivalent, the Ladder Tie is both friendly to our environment and cost effective.

The Ladder Tie has been accepted in the Automotive, Electronics and Industrial industries.

SECURITY TIES

SECUR-A-TIE® 5" / 127mm



SECUR-A-TIE

Permanent locking beaded loop fastener that adjusts for a custom fit. Commonly used in the retail market for tagging and securing merchandise for economical bundling and attaching solutions.

PART #	MATERIAL STYLE	QTY. PER BAG	QTY. PER CASE
08350	Natural	5,000	50M
08354	Red	5,000	20M
08355	Yellow	5,000	20M
08356	Blue	5,000	20M
08358	Orange	5,000	20M
08359	Black	5,000	20M
08357	Green	5,000	20M
08362*	Natural Polypropylene	5,000	50M
10673	Natural	1,000	20M

WIDTH	n/a	n/a
THICKNESS	.070"	1.78mm
BUNDLE DIAMETER MIN. – MAX.	1/16"-1-3/16"	1.59mm-30.16mm
MIN. LOOP TENSILE STRENGTH	15 lbs.	8.16kg

* 08320 is 8 lb. tensile strength

SECUR-A-TIE 8" / 203.2mm

WIDTH	n/a	n/a
THICKNESS	.070"	1.78mm
BUNDLE DIAMETER MIN. – MAX.	1/16"-2"	1.59mm-50.8mm
MIN. LOOP TENSILE STRENGTH	18 lbs.	8.16kg

PART #	MATERIAL STYLE	QTY. PER BAG	QTY. PER CASE
08320	Natural - Polypropylene	2,000	20M

SECUR-A-SEAL™ 8" / 203.2mm



SECUR-A-SEAL

Economical bundling along with a tamper evident head design. UL listed. Used for applications requiring lower tensile strength where tamper evident is required.

PART #	MATERIAL STYLE	QTY. PER BAG	QTY. PER CASE
08319	Natural	2,000	20M
10146	Red	2,000	20M
10147	Orange	2,000	20M
10148	Yellow	2,000	20M
10149	Green	2,000	20M
10150	Blue	2,000	20M
10154	Black	2,000	20M
10155	White	2,000	20M

WIDTH	n/a	n/a
THICKNESS	.070"	1.78mm
BUNDLE DIAMETER MIN. – MAX.	1/16"-2"	1.59mm-50.8mm
MIN. LOOP TENSILE STRENGTH	8 lbs.	3.63kg

SECURITY TIES

SECURITY TIE 5" / 127mm



WIDTH	.15"	2.8mm
THICKNESS	.04"	1.1mm
BUNDLE DIAMETER MIN. – MAX.	1.5"-1.5"	38.1mm-38.1mm
MIN. LOOP TENSILE STRENGTH	30 lbs.	13.6kg

PART #	MATERIAL STYLE	QTY. PER BAG	QTY. PER CASE
20064-0	Black	1,000	5M
20064-B	Blue	1,000	5M
20064-G	Green	1,000	5M
20064-R	Red	1,000	5M
20064-P	Purple	1,000	5M
20064-Y	Yellow	1,000	5M
20064-ORG	Orange	1,000	5M

SECURITY TIE 7" / 181mm

PART #	MATERIAL STYLE	QTY. PER BAG	QTY. PER CASE
20004-N	Natural	1,000	5M

SECURITY TIE

Affordable and versatile. Use to secure tickets to skiers jackets at the major ski resorts.

Item numbers, descriptions and availability subject to change. Please check out website for current updates.

automotive.averydennison.com
Automotive

fastener.averydennison.com
Cable Tie Fasteners

SLIM LINE TIES

SLIM LINE 6" / 152.4mm



WIDTH	.094"	2.39mm
THICKNESS	.044"	1.18mm
BUNDLE DIAMETER MIN. – MAX.	1/16"-1-1/2"	1.59mm-38.1mm
MIN. LOOP TENSILE STRENGTH	18 lbs.	8.16kg

SLIM LINE 8" / 203.2mm



WIDTH	.099"	2.52mm
THICKNESS	.044"	1.12mm
BUNDLE DIAMETER MIN. – MAX.	1/16"-2-1/8"	1.59mm-53.98mm
MIN. LOOP TENSILE STRENGTH	18 lbs.	8.17kg

SLIM LINE 15" / 381mm



WIDTH	.140"	3.56mm
THICKNESS	.055"	1.40mm
BUNDLE DIAMETER MIN. – MAX.	1/16"-4"	1.59mm-101.6mm
MIN. LOOP TENSILE STRENGTH	40 lbs.	18.14kg

PART #	MATERIAL STYLE	MILITARY SPECIFICATION	QTY. PER BAG	QTY. PER CASE
10391	Natural	MS-3367-4-9	1,000	5M
10394	Natural	MS-3367-4-9	100	5M
10393	Black weather resistant	MS-3367-4-0	1,000	5M
10396	Black weather resistant	MS-3367-4-0	100	5M
10392	Black heat stabilized		1,000	5M

SLIM LINE TIES

With smaller head and narrower cross section is a good choice where space is limited.

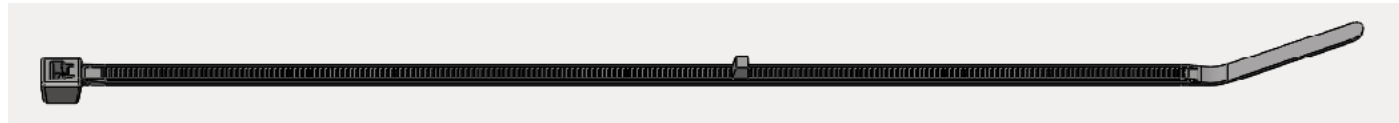
PART #	MATERIAL STYLE	MILITARY SPECIFICATION	QTY. PER BAG	QTY. PER CASE
10325	Natural	MS-3367-4-9	1,000	5M
10328	Natural	MS-3367-4-9	100	5M
10327	Black weather resistant	MS-3367-4-0	1,000	5M
10330	Black weather resistant	MS-3367-4-0	100	5M
10326	Black heat stabilized		1,000	5M

PART #	MATERIAL STYLE	QTY. PER BAG	QTY. PER CASE
10338	Natural	100	1M
10336	Black heat stabilized	1,000	5M
10339	Black heat stabilized	100	1M
10335	Natural	100	1M

SPECIALTY TIES

STOPPER TIES 8" / 203.2mm

PART #	MATERIAL STYLE	QTY. PER BAG	QTY. PER CASE
10406	Black heat stabilized	1,000	5M



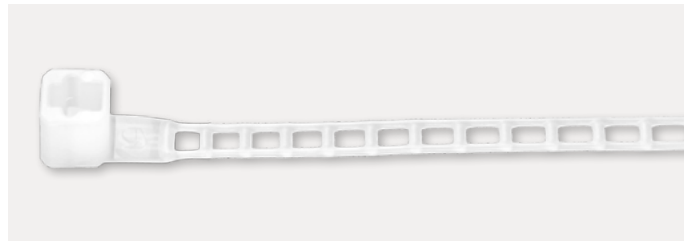
WIDTH	.130"	3.80mm
THICKNESS	.054"	1.37mm
BUNDLE DIAMETER MIN. – MAX.	1.3"	33.02mm
MIN. LOOP TENSILE STRENGTH	40 lbs.	18.14kg

Stopper Ties 11" / 279.4mm

PART #	MATERIAL STYLE	QTY. PER BAG	QTY. PER CASE
10660	Black heat stabilized	1,000	5M

WIDTH	.130"	3.30mm
THICKNESS	.054"	1.37mm
BUNDLE DIAMETER MIN. – MAX.	2.0"	50.8mm
MIN. LOOP TENSILE STRENGTH	50 lbs.	22.68kg

MERCHANDISE PAIRING TIES 11" / 279.4mm



WIDTH	.140"	3.56mm
THICKNESS	.040"	1.02mm
BUNDLE DIAMETER MIN. – MAX.	3.25"	82.55mm
MIN. LOOP TENSILE STRENGTH	40 lbs.	18.14kg

PART #	MATERIAL STYLE	QTY. PER BAG	QTY. PER CASE
10700	Natural	1,000	5M

STOPPER AND MERCHANDISE PAIRING TIES

Use with products when a consistent fixed bundle diameter is desired. The unique "stop" prevents the bundle from being cinched too tightly.

DOUBLE HEADED CABLE TIES 7.5" / 190.5mm

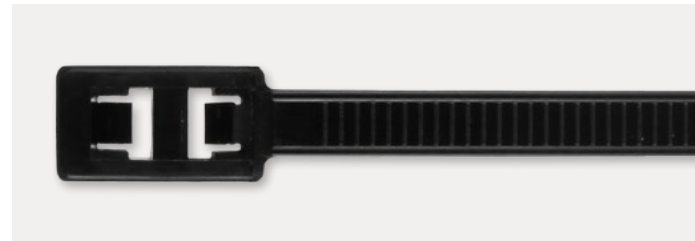
WIDTH	.177"	4.50mm
THICKNESS	.055"	1.40mm
BUNDLE DIAMETER MIN. – MAX.	1/16"-1-3/4"	1.559mm-44.45mm
MIN. LOOP TENSILE STRENGTH	50/50 lbs.	22.68kg

Double headed ties also make a great insulator to stop vibration.

PART #	MATERIAL STYLE	QTY. PER BAG	QTY. PER CASE
10424	Natural	1,000	5M
10425	Black heat stabilized	1,000	5M
10428	Black heat stabilized	100	5M
10426	Black weather resistant	1,000	5M

DOUBLE HEADED CABLE TIES 11" / 279.4mm

WIDTH	.177"	4.50mm
THICKNESS	.055"	1.40mm
BUNDLE DIAMETER MIN. – MAX.	1/16"-3"	1.59mm-76.2mm
MIN. LOOP TENSILE STRENGTH	50/50 lbs.	22.68kg



PART #	MATERIAL STYLE	QTY. PER BAG	QTY. PER CASE
10430	Natural	1,000	5M
10431	Black heat stabilized	1,000	5M
10432	Black weather resistant	1,000	5M

SPECIALTY TIES / MOUNT TIES

RELEASABLE CABLE TIES 7.5" / 190.5mm

WIDTH	.177"	4.50mm
THICKNESS	.050"	1.27mm
BUNDLE DIAMETER MIN. – MAX.	1/16"-1-3/4"	1.59mm-44.45mm
MIN. LOOP TENSILE STRENGTH	50 lbs.	22.68kg

PART #	MATERIAL STYLE	QTY. PER BAG	QTY. PER CASE
10361	Natural	1,000	5M
10364	Natural	100	5M
10362	Black heat stabilized	1,000	5M
10363	Black weather resistant	1,000	5M
10366	Black weather resistant	100	5M

RELEASABLE CABLE TIES 11" / 279.4mm

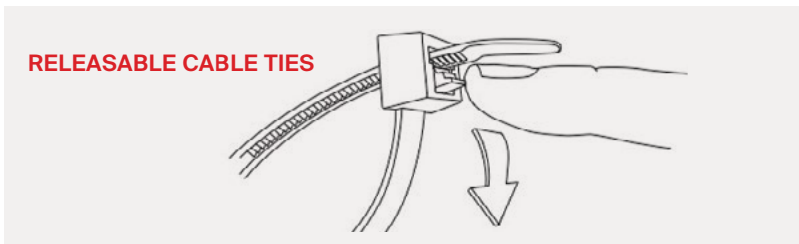
WIDTH	.177"	4.50mm
THICKNESS	.050"	1.27mm
BUNDLE DIAMETER MIN. – MAX.	1/16"-3"	1.59mm-76.2mm
MIN. LOOP TENSILE STRENGTH	50 lbs.	22.68kg

PART #	MATERIAL STYLE	QTY. PER BAG	QTY. PER CASE
10367	Natural	1,000	5M
10370	Natural	100	1M
10368	Black heat stabilized	1,000	5M
10369	Black weather resistant	1,000	5M

PUSH MOUNT 7.5" / 190.5mm



WIDTH	.177"	4.50mm
THICKNESS	.050"	1.27mm
BUNDLE DIAMETER MIN. – MAX.	1/16"-1-3/4"	1.59mm-44.45mm
MIN. LOOP TENSILE STRENGTH	50 lbs.	22.68kg



PART #	MATERIAL STYLE	QTY. PER BAG	QTY. PER CASE
08414	Natural	1,000	5M
08445	Black heat stabilized	1,000	5M
08446	Black weather resistant	1,000	5M

WINGED PUSH MOUNT 4" / 101.6mm



WIDTH	.095"	2.41mm
THICKNESS	.039"	.99mm
BUNDLE DIAMETER MIN. – MAX.	1/16"-7/8"	1.59mm-22.23mm
MIN. LOOP TENSILE STRENGTH	18 lbs.	8.16kg

PART #	MATERIAL STYLE	QTY. PER BAG	QTY. PER CASE
10691	Black heat stabilized	1,000	5M

PUSH MOUNT

Easily pushes into pre-drilled hole for simple, secure one piece harness. Winged Push Mount ties fit variable panel thickness up 1/8" – hole diameter of 1/4".

SCREW MOUNT TIES

SCREW MOUNT 7.5" / 190.5mm



WIDTH	.177"	4.50mm
THICKNESS	.055"	1.40mm
BUNDLE DIAMETER MIN. – MAX.	1/16"–1-3/4"	1.59mm–44.45mm
MIN. LOOP TENSILE STRENGTH	50 lbs.	22.68kg

PART #	MATERIAL STYLE	QTY. PER BAG	QTY. PER CASE
08415	Natural	1,000	5M
08484	Natural	100	5M
08443	Black heat stabilized	1,000	5M
08444	Black weather resistant	1,000	5M
08318	Black weather resistant	100	5M

SCREW MOUNT 11" / 279.4mm



WIDTH	.177"	4.50mm
THICKNESS	.050"	1.27mm
BUNDLE DIAMETER MIN. – MAX.	1/16"–3"	1.59mm–76.2mm
MIN. LOOP TENSILE STRENGTH	50 lbs.	22.68kg

PART #	MATERIAL STYLE	QTY. PER BAG	QTY. PER CASE
10350	Natural	1,000	5M
10351	Black heat stabilized	1,000	5M
10352	Black weather resistant	1,000	5M
10354	Black weather resistant	100	1M

SCREW MOUNT 14.5" / 368.3mm



WIDTH	.250"	6.35mm
THICKNESS	.075"	1.91mm
BUNDLE DIAMETER MIN. – MAX.	3/16"–3.5"	4.76mm–101.6mm
MIN. LOOP TENSILE STRENGTH	120 lbs.	54.43kg

PART #	MATERIAL STYLE	QTY. PER BAG	QTY. PER CASE
10035	Natural	100	1M
08426	Natural	50	1M
08441	Black heat stabilized	100	1M
10040	Black weather resistant	100	1M

SCREW MOUNT

Use when precision matters. Keep application secure and positioned in exact position. Often used when a part is pre-mounted to a surface prior to final assembly.

ADHESIVE BACKED MOUNT TIES

3/4" AND 1" MOUNTS

- High impact and tensile strength Nylon
- Operating temperatures from -40°F to 185°F (-40°C to 85°C)

FOUR-WAY POSITIONING

Speeds assembly—Cable ties slid easily into mounts from any of four sides

ADHESIVE-BACKED MOUNTS

- Conform to minor surface irregularities
- Available materials:
 - Rubber—quick set, modern strength
 - Acrylic—longer set, higher strength
- Load carrying capability
 - 1" adhesive-backed mounts - 0.5 lbs.
 - 3/4" -0.25 lbs.

MOUNT APPLICATION	ADHESIVE SELECTION	
	RUBBER	ACRYLIC
Paper / Cardboard	x	
Steel / Aluminium	x	x
Glass / Ceramics		x
Rubber	x	
Painted Surfaces	x	x
Cloth	x	
Rigid Vinyl	x	x
Plasticized Vinyl		x
Polypropylene / Polyethylene	x	
ABS Acrylics	x	
Polystyrene	x	x
Urethane	x	

PAINTED SURFACES	SURFACE SELECTION	
	RUBBER	ACRYLIC
Polene	x	
Urethane	x	
Silicone	x	
Latex	x	
Enamel		x
Acrylic		x

	RELATIVE SOLVENT RESISTANCE	TEMP. PERFORMANCE			RELATIVE SHEAR STRENGTH	PEEL STRENGTH	
		LOW	HIGH CONTIN.	INTERMIT.		INITIAL	ULTIMATE
RUBBER	Medium	-20F / 28.9C	150F / 65.6C	200F / 93.3C	High	High	High
ACRYLIC	High	-20F / 28.9C	180F / 82.2C	375F / 190.6C	Very High	Medium	High

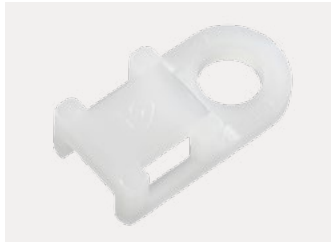
Item numbers, descriptions and availability subject to change. Please check out website for current updates.

automotive.averydennison.com
Automotive

fastener.averydennison.com
Cable Tie Fasteners

ACCESSORIES

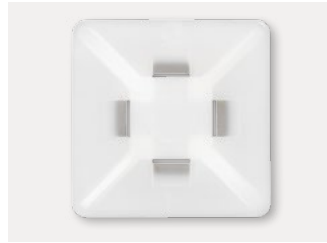
ANCHOR BASE



LENGTH	.750"	19.05mm
WIDTH	.380"	9.65mm
THICKNESS	.210"	5.33mm

PART #	MATERIAL STYLE	QTY. PER BAG	QTY. PER CASE
10027	#8 screw	100	1M
10028	#10 screw	100	1M

ADHESIVE MOUNT



LENGTH	3/4"	19.05mm
	.835"	21.21mm
WIDTH	.835"	21.21mm
THICKNESS	0.190"	4.83mm
	1.000"	25.4mm
	1.090"	27.69mm

PART #	MATERIAL STYLE	QTY. PER BAG	QTY. PER CASE
08461	3/4"/19.05mm acrylic adhesive mount for miniature ties and intermediate ties	100	5M
10029	3/4"/19.05mm rubber based adhesive mount for miniature ties and intermediate ties	100	5M
08462	1"/25.4mm acrylic adhesive mount for intermediate and standard ties	100	5M
10030	1"/25.4mm rubber based adhesive mount for intermediate and standard ties	100	5M

SCREW CRADLE MOUNT



LENGTH		
#4	.540"	13.72mm
#8	.720"	18.29mm
#10	1.040"	26.42mm
1/4"	1.040"	26.42mm

WIDTH		
#4	.340"	8.64mm
#8	.520"	13.21mm
#10	.640"	16.26mm
1/4"	.640"	16.26mm

THICKNESS		
#4	.230"	5.84mm
#8	.330"	8.38mm
#10	.420"	10.67mm
1/4"	.420"	10.67mm

PART #	MATERIAL STYLE	QTY. PER BAG	QTY. PER CASE
10044	small #4 screw	100	5M
10045	Medium #8 screw	100	5M
10046	Large #10 screw	100	1M
10079	Large 1/4" / 6.35mm screw black heat stabilized	100	1M

IDENTIFICATION PLATE



LENGTH	1.500"	38.1mm
WIDTH	.755"	19.18mm
THICKNESS	.030"	.76mm

PART #	MATERIAL STYLE	QTY. PER BAG	QTY. PER CASE
08457	1-1/2"-3/4" / 38.1mm - 19.05mm	100	1M

SCREW MOUNT



LENGTH	1.080"	27.43mm
WIDTH	1.080"	27.43mm
THICKNESS	.260"	6.60mm

PART #	MATERIAL STYLE	QTY. PER BAG	QTY. PER CASE
08463	1" / 4mm - plain backed screw mount for intermediate and standard ties	100	5M

PUSH-IN MOUNT



LENGTH	.620"	15.75mm
WIDTH	.430"	10.92mm
THICKNESS	.295"	7.49mm

PART #	MATERIAL STYLE	QTY. PER BAG	QTY. PER CASE
10056	1/4" / 6.35mm hole	100	5M

IDENTIFICATION TIES

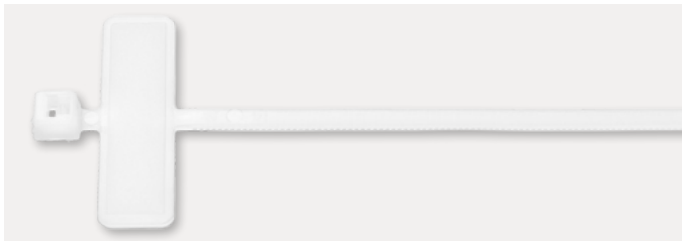
CUSTOM TIE IMPRINTING

- LAST LONGER THAN HEAT STAMPING
- EASY TO READ CHARACTERS
- RESIST FADING
- WATER AND SCRATCH RESISTANT
- WIDE VARIETY OF CHARACTERS, SIZES AND STYLES

IMPRINT CAPABILITIES

- SEQUENTIAL / NON SEQUENTIAL NUMBERING, LETTERS,
- SERIAL NUMBERS, LOGOS (PDF. SENT ELECTRONICALLY)
- LARGE SELECTION OF FONTS, EIGHT STANDARD COLORS
- UP TO 34 CHARACTERS, DEPENDING ON CABLE TIE WIDTH AND LENGTH

IDENTIFICATION CABLE TIES 4" / 101.6mm



WIDTH	.095"	2.41mm
THICKNESS	.041"	1.04mm
BUNDLE DIAMETER MIN. – MAX.	3/16"–7/8"	4.77mm–22.23mm
MIN. LOOP TENSILE STRENGTH	18 lbs.	8.16kg

PART #	MATERIAL STYLE	MILITARY SPECIFICATION	QTY. PER BAG	QTY. PER CASE
08412	Natural	MS-3368-5-9E	1,000	5M
08417	Natural	MS-3368-5-9E	100	5M
10031	White		1,000	5M

IDENTIFICATION CABLE TIES 7.5" / 190.5mm



WIDTH	.177"	4.50mm
THICKNESS	.048"	1.22mm
BUNDLE DIAMETER MIN. – MAX.	3/8"–1-3/4"	9.53mm–44.45mm
MIN. LOOP TENSILE STRENGTH	50 lbs.	22.68kg

PART #	MATERIAL STYLE	MILITARY SPECIFICATION	QTY. PER BAG	QTY. PER CASE
08413	Natural	MS-3368-1-9A	1,000	5M
08419	Natural	MS-3368-1-9A	100	5M

CABLE TIE INSTALLATION TOOLS



EVERY DENNISON CABLE TIE TOOLS ARE RELIABLE, DURABLE AND COMFORTABLE

CABLE TIE INSTALLATION TOOLS

- Improved internal mechanism—increases long-term tool reliability
- Rugged, lightweight cast aluminum body—built to last in production environment
- Ergonomically shaped body and handle—for operator comfort
- Pneumatic tool operates at 100 PSI—reduce operator fatigue, increase productivity

TO OPERATE TOOL

1. Set tension according to classification of tie being applied—higher the tension, the tighter the bundle
2. Pull and turn tension adjusting knob to correct number in window of handle
3. Hold the nose of the tool against the extended portion of tie next to cable tie head—tail lies in open slot of tool
4. Tighten cable by squeezing trigger, release and cut portion ejects

By Hand—wrap cable tie around bundle harness, insert tip through cable tie head, pull snug. Follow steps 3 and 4 above.

RECOMMENDED TOOL INFORMATION AND TENSION SETTING

- MS Installation Tool usually 90387-1 or 90387-2
- The knob on the installation tool should be within this range
- Perceived quality problems can be solved by changing the tension setting to proper level

BOTH THE STANDARD MANUAL AND PNEUMATIC TOOLS WILL ACCOMMODATE

- MINIATURE TIES—18 LB.
- INTERMEDIATE TIES—40 LB.
- STANDARD TIES—50 LB.

CABLE TIE INSTALLATION TOOLS

MANUAL CABLE TIE TOOL

ITEM #	12001
DESCRIPTION	Manual Cable Tie Tool
TOOLS PER BOX	1 Tool
TOOLS PER CASE	30 Tools
MINIMUM ORDER	1 Tool

PNEUMATIC CABLE TIE TOOL

ITEM #	12500
DESCRIPTION	Pneumatic Cable Tie Tool
TOOLS PER BOX	1 Tool
TOOLS PER CASE	30 Tools
MINIMUM ORDER	1 Tool

CABLE TIE TOOL ACCESSORY KITS

ITEM #	DESCRIPTION	KIT CONTENTS
12005-0	Blade Cover Extension (prevents flush cut, leaving 3cm of strap)	1 Blade Cover w/Extension, 1 Blade Cover Screw
12006-0	Tension Knob Adjustment Lock	1 Tension Knob Lock, 1 Tension Knob Screw, 1 Lock Washer

CABLE TIE TOOL RECOMMENDED TENSION SETTINGS

TENSION SETTING	CLASSIFICATION	MAXIMUM TIE WIDTH (IN.)	MAXIMUM TIE WIDTH (MM)
1-3	Miniature	0.10	2.54
3-6	Intermediate	0.15	3.71
6-8	Standard	0.19	4.83

CABLE TIE INSTALLATION TOOLS



BASIC CABLE TIE TOOL

- FOR ON THE JOB INSTALLATIONS
- LIGHTWEIGHT
- ECONOMICAL

BASIC CABLE TIE TOOL

ITEM #	DESCRIPTION	TOOLS PER BOX	TOOLS PER CASE	MINIMUM ORDER
10625	Basic Installation Tool	1 Tool	30 Tools	1 Tool

RECOMMENDED TENSION SETTING

Classification	Setting
Miniature	1-3
Intermediate	3-5
Standard	6-8

CABLE TIE TOOL REPLACEMENT PARTS

ITEM #	DESCRIPTION	KIT CONTENTS
12002-0	Blade Replacement	1 Blade, 1 Screw
12003-0	Trigger Replacement (for 12001-0 only)	1 Trigger, 1 Trigger Pin
12004-0	Blade Cover Replacement	1 Blade Cover, 1 Blade Cover Screw
12007-0	Tension Knob Replacement	1 Tension Knob
12501-0	Trigger Replacement (for 12500-0 only)	1 Trigger, 1 Trigger Pin

Item numbers, descriptions and availability subject to change. Please check out website for current updates.

automotive.averydennison.com
Automotive

fastener.averydennison.com
Cable Tie Fasteners

ENGINEERED FASTENERS FOR AUTOMOTIVE

automotive.averydennison.com

ENGINEERED FASTENERS

EVERY DENNISON ENGINEERED FASTENERS ARE DESIGNED TO BE THE PREMIER FASTENING, GUIDING AND LOCATING SOLUTIONS FOR YOUR WIRE HARNESS, HOSE OR CABLE ASSEMBLIES.

OUR ENGINEERED SOLUTIONS FOCUS ON THE FOLLOWING AREAS

- EASE OF ASSEMBLY

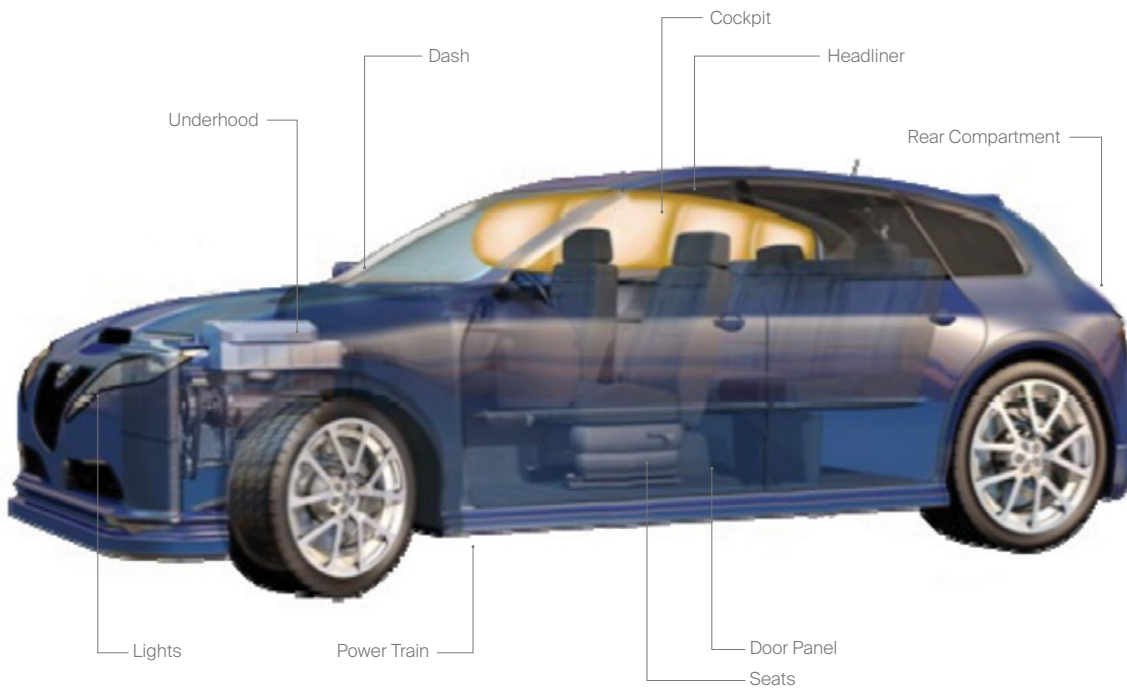
- Low insertion forces
- Small form factors

- RELIABILITY

- Choice of materials for temperature cycling and long term use

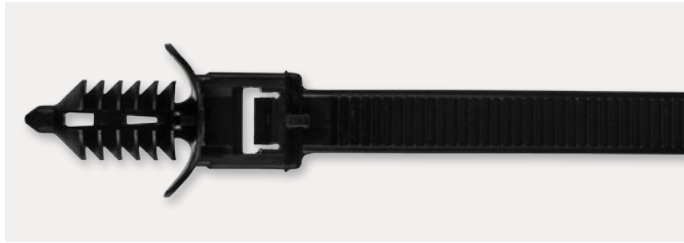
- PROFILE OPTIONS

- We don't have **ALL** the solutions, but we have the **RIGHT** solutions to meet today's automotive needs



HOLE TIES

STANDARD FIR TREE STRAP LENGTH 7.5" / 190mm



PART #	DESCRIPTION	COLOR	TYPICAL MOUNT SIZE	PANEL THICKNESS	BUNDLE DIAMETER		INSERTION FORCE (lbf)		RETENTION FORCE (lbf)	
10710	Fir Tree, Small	Black	M6 Threaded / 5.4mm	Max. 6.0 mm	Min.	1/16" (1.6mm)	Max.	25 / 10	Min.	60 / 20
					Max.	1-3/4" (44.5mm)	Typical	20 / 5.5	Typical	70 / 25
20079	1/2 Fluted Fir Tree	Gray	M6 Threaded / 5.4mm	3.0 to 6.0 mm	Min.	1/16" (1.6mm)	Max.	7	Min.	25
					Max.	1-3/4" (44.5mm)	Typical	6	Typical	38
10709	Fir Tree, Standard	Black	6.6mm Hole / 6.35 Hex	Max. 6.0 mm	Min.	1/16" (1.6mm)	Max.	14	Min.	40
					Max.	1-3/4" (44.5mm)	Typical	10	Typical	65
20086	Fir Tree with Stop	Brown	8mm Hole	Max. 4.0 mm	Min.	fixed 40.6mm	Max.	15	Min.	40
					Max.		Typical	9	Typical	50
20050	Fir Tree on Head, 8mm	Gray	8mm Hole	Max. 4.0 mm	Min.	1/16" (1.6mm)	Max.	15	Min.	40
					Max.	1-3/4" (44.5mm)	Typical	9	Typical	50
20049	Fir Tree on Head, 10mm	Black	M10 Threaded Hole	Max. 3.0 mm	Min.	1/16" (1.6mm)	Max.	10	Min.	50
					Max.	1-3/4" (44.5mm)	Typical	10	Typical	63

CURVE TIE FIR TREE STRAP LENGTH 7.5" / 190mm*



PART #	DESCRIPTION	COLOR	TYPICAL MOUNT SIZE	PANEL THICKNESS	BUNDLE DIAMETER		INSERTION FORCE (lbf)		RETENTION FORCE (lbf)	
20002	4 Flute Curved Tie	Gray	6.6mm Hole / 6.35 Hex	Max. 3.0 mm	Min.	1/16" (1.6mm)	Max.	20	Min.	50
					Max.	1-3/4" (44.5mm)	Typical	10	Typical	60
20038	7 Flute Curved Tie	Black	6.6mm Hole / 6.35 Hex	Max. 7.0 mm	Min.	1/16" (1.6mm)	Max.	20	Min.	50
					Max.	1-3/4" (44.5mm)	Typical	12	Typical	70
20042	4 Flute Curved Tie	Black	6.6mm Hole / 6.35 Hex	Max. 3.0 mm	Min.	1/16" (1.6mm)	Max.	20	Min.	50
					Max.	1-3/4" (44.5mm)	Typical	10	Typical	60
20140*	Low Insertion Fir Tree LIFT™	Black	6.6mm Hole / 6.35 Hex	Max. 7.0 mm	Min.	1/16" (1.6mm)	Max.	10	Min.	40
					Max.	1-3/8" (35mm)	Typical	7	Typical	72
20098	Low Insertion Fir Tree LIFT™	Black	6.6mm Hole / 6.35 Hex	Max. 7.0 mm	Min.	1/16" (1.6mm)	Max.	10	Min.	40
					Max.	1-3/4" (44.5mm)	Typical	7	Typical	72
20105	Low Insertion Fir Tree LIFT™	Gray	6.6mm Hole / 6.35 Hex	Max. 7.0 mm	Min.	1/16" (1.6mm)	Max.	10	Min.	40
					Max.	1-3/4" (44.5mm)	Typical	7	Typical	72
20106	Fir Tree Standoff Tie	Black	6.35mm Hole	Max 3.0 mm	Min.	1/16" (1.6mm)	Max.	12	Min.	25
					Max.	1-3/4" (44.5mm)	Typical	6	Typical	32
20094	4 Flute Curved Tie	Black	8mm Hole	Max. 4.0 mm	Min.	1/16" (1.6mm)	Max.	15	Min.	50
					Max.	1-3/4" (44.5mm)	Typical	10	Typical	82
20117	Long 8mm Fir Tree	Black	8mm Hole / M 10 Thread	Max. 7.0 mm	Min.	1/16" (1.6mm)	Max.	10	Min.	50
					Max.	1-3/4" (44.5mm)	Typical	7	Typical	80
20127	Long 8mm Fir Tree	Natural	8mm Hole / M 10 Thread	Max. 7.0 mm	Min.	1/16" (1.6mm)	Max.	10	Min.	50
					Max.	1-3/4" (44.5mm)	Typical	7	Typical	80
20103	Fir Tree	Black	10mm Hole	Max. 5.0 mm	Min.	1/16" (1.6mm)	Max.	10	Min.	50
					Max.	1-3/4" (44.5mm)	Typical	6	Typical	62
20110	Low Insertion Fir Tree LIFT™	Black	11.5mm Hole	Max. 8.5 mm	Min.	1/16" (1.6mm)	Max.	10	Min.	30
					Max.	1-3/4" (44.5mm)	Typical	6	Typical	50

*Part # 20140 Strap Length 5.5" / 140mm
LIFT™ = Low Insertion Fir Tree

Unless noted, all automotive ties minimum tensile is 50 lbs. / 22.68kg

HOLE TIES

FIR TREE ON STRAP STRAP LENGTH 7.5" / 190mm



PART #	DESCRIPTION	COLOR	TYPICAL MOUNT SIZE	PANEL THICKNESS	BUNDLE DIAMETER		INSERTION FORCE (lbf)		RETENTION FORCE (lbf)	
10711	Fir Tree on Strap	Black	6.4mm-7mm Hole	Max. 8.5 mm	Min.	1/4" (6.35mm)	Max.	10	Min.	40
					Max.	1-7/8" (47.6mm)	Typical	6.5	Typical	50
10719	Fir Tree on Strap	Gray	6.4mm-7mm Hole	Max. 7.0 mm	Min.	1/4" (6.35mm)	Max.	10	Min.	40
					Max.	1-7/8" (47.6mm)	Typical	6.5	Typical	50

OFFSET FIR TREE STRAP LENGTH 7.5" / 190mm*



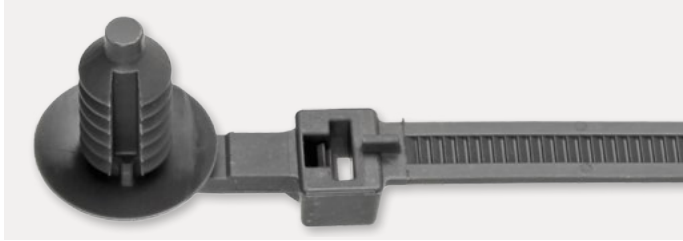
PART #	DESCRIPTION	COLOR	TYPICAL MOUNT SIZE	PANEL THICKNESS	BUNDLE DIAMETER		INSERTION FORCE (lbf)		RETENTION FORCE (lbf)	
20066	6mm, Offset Tie, Reversed (25mm Offset)	Gray	M6 Threaded Hole	0.6 to 6.0 mm	Min.	1/16" (1.6mm)	Max.	10	Min.	50
					Max.	1-3/4" (44.5mm)	Typical	6	Typical	60
20058	6mm, Offset Tie, Standard (25mm Offset)	Black	M6 Threaded Hole	0.6 to 6.0 mm	Min.	1/16" (1.6mm)	Max.	10	Min.	50
					Max.	1-3/4" (44.5mm)	Typical	6	Typical	60
20136	M6, 15mm Offset Standard	Black	M6 Threaded Hole	0.6 to 6.0 mm	Min.	1/16" (1.6mm)	Max.	10	Min.	50
					Max.	1-3/4" (44.5mm)	Typical	6	Typical	60
20137	M6, 15mm Offset Reversed	Gray	M6 Threaded Hole	0.6 to 6.0 mm	Min.	1/16" (1.6mm)	Max.	10	Min.	50
					Max.	1-3/4" (44.5mm)	Typical	6	Typical	60
20069	Offset Tie, Reversed (25mm Offset)	Brown	6.35 mm Hole	Max. 7.0 mm	Min.	1/16" (1.6mm)	Max.	25	Min.	50
					Max.	1-3/4" (44.5mm)	Typical	20	Typical	80
20129	15mm Offset Reversed, LIFT™	Gray	6.6mm Hole / 6.35 Hex	Max. 7.0 mm	Min.	1/16" (1.6mm)	Max.	10	Min.	40
					Max.	1-3/4" (44.5mm)	Typical	6	Typical	60
20135	15mm Offset, Standard LIFT™	Black	6.6mm Hole / 6.35 Hex	Max. 7.0 mm	Min.	1/16" (1.6mm)	Max.	10	Min.	40
					Max.	1-3/4" (44.5mm)	Typical	6	Typical	60
20161*	15mm Offset Reversed, LIFT™	Gray	6.6mm Hole / 6.35 Hex	Max. 7.0 mm	Min.	1/16" (1.6mm)	Max.	10	Min.	40
					Max.	1-1/2" (38.1mm)	Typical	6	Typical	60
20159*	15mm Offset, Standard LIFT™	Black	6.6mm Hole / 6.35 Hex	Max. 7.0 mm	Min.	1/16" (1.6mm)	Max.	10	Min.	40
					Max.	1-1/2" (38.1mm)	Typical	6	Typical	60
20027	25mm Offset, Reversed	Gray	6.6mm Hole / 6.35 Hex	Max. 7.0 mm	Min.	1/16" (1.6mm)	Max.	15	Min.	50
					Max.	1-3/4" (44.5mm)	Typical	11	Typical	70

*Strap Length 5.5" / 140mm
LIFT™ = Low Insertion Fir Tree

Unless noted, all automotive ties minimum tensile is 50 lbs. / 22.68kg

HOLE TIES

OFFSET FIR TREE STRAP LENGTH 7.5" / 190mm*



PART #	DESCRIPTION	COLOR	TYPICAL MOUNT SIZE	PANEL THICKNESS	BUNDLE DIAMETER	INSERTION FORCE (lbf)	RETENTION FORCE (lbf)
20005	25mm Offset, Standard	Black	6.6mm Hole / 6.35 Hex	Max. 7.0 mm	Min. 1/16" (1.6mm) Max. 1-3/4" (44.5mm)	Max. 15 Typical 12	Min. 50 Typical 70
20132	25mm Offset Standard LIFT™	Black	6.6mm Hole / 6.35 Hex	Max. 7.0 mm	Min. 1/16" (1.6mm) Max. 1-3/4" (44.5mm)	Max. 10 Typical 6	Min. 40 Typical 60
20133	25mm Offset Reversed LIFT™	Gray	6.6mm Hole / 6.35 Hex	Max. 7.0 mm	Min. 1/16" (1.6mm) Max. 1-3/4" (44.5mm)	Max. 10 Typical 6	Min. 40 Typical 60
20160*	25mm Offset Standard LIFT™	Black	6.6mm Hole / 6.35 Hex	Max. 7.0 mm	Min. 1/16" (1.6mm) Max. 1-1/2" (38.1mm)	Max. 10 Typical 6	Min. 40 Typical 60
20162*	25mm Offset Reversed LIFT™	Gray	6.6mm Hole / 6.35 Hex	Max. 7.0 mm	Min. 1/16" (1.6mm) Max. 1-1/2" (38.1mm)	Max. 10 Typical 6	Min. 40 Typical 60
20028	25mm Offset, Reversed, High Temp	Black	6.6mm Hole / 6.35 Hex	Max. 7.0 mm	Min. 1/16" (1.6mm) Max. 1-3/4" (44.5mm)	Max. 15 Typical 13	Min. 50 Typical 80
20121	25mm Offset, Standard	Black	M10 Threaded Hole	Max. 7.0 mm	Min. 1/4" (6.35mm) Max. 1-3/4" (44.5mm)	Max. 15 Typical 12	Min. 50 Typical 90
20122	25mm Offset, Reversed	Gray	M10 Threaded Hole	Max. 7.0 mm	Min. 1/4" (6.35mm) Max. 1-3/4" (44.5mm)	Max. 15 Typical 12	Min. 50 Typical 90
20032	25mm Offset, Reversed	Black	9.5mm Hole	Max. 5.0 mm	Min. 1/16" (1.6mm) Max. 1-3/4" (44.5mm)	Max. 15 Typical 11	Min. 40 Typical 35
20073	25mm Offset, Standard	Gray	9.5mm Hole	Max. 5.0 mm	Min. 1/16" (1.6mm) Max. 1-3/4" (44.5mm)	Max. 15 Typical 11	Min. 50 Typical 80

*Strap Length 5.5" / 140mm
LIFT™ = Low Insertion Fir Tree

ARROW HEAD PUSH MOUNT STRAP LENGTH 7.5" / 190mm

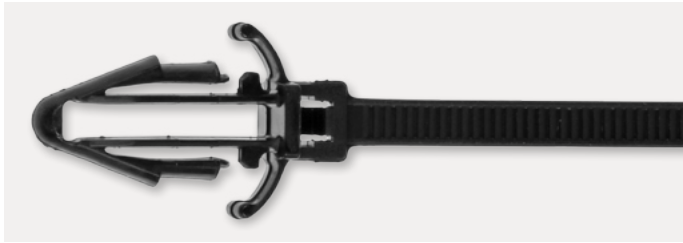


PART #	DESCRIPTION	COLOR	TYPICAL MOUNT SIZE	PANEL THICKNESS	BUNDLE DIAMETER	INSERTION FORCE (lbf)	RETENTION FORCE (lbf)
08414	Push Mount	Natural	6.35 mm Hole	Max. 3.2 mm	Min. 1/16" (1.6mm) Max. 1-3/4" (44.5mm)	Max. n/a Typical	Min. n/a Typical
08445	Push Mount, HS	Black	6.35 mm Hole	Max. 3.2 mm	Min. 1/16" (1.6mm) Max. 1-3/4" (44.5mm)	Max. n/a Typical	Min. n/a Typical
08446	Push Mount, WR	Black	6.35 mm Hole	Max. 3.2 mm	Min. 1/16" (1.6mm) Max. 1-3/4" (44.5mm)	Max. n/a Typical	Min. n/a Typical
20087	90° Arrow on Strap	Black	6.6 mm Hole / 6.35 mm Hex	4.0-5.0 mm	Min. 1/4" (6.4mm) Max. 1-3/4" (44.5mm)	Max. 10 Typical 5	Min. 50 Typical 68

Unless noted, all automotive ties minimum tensile is 50 lbs. / 22.68kg

HOLE TIES

WINGED ARROW HEAD PUSH MOUNT STRAP LENGTH 4" / 102mm



PART #	DESCRIPTION	COLOR	TYPICAL MOUNT SIZE	PANEL THICKNESS	BUNDLE DIAMETER		INSERTION FORCE (lbf)		RETENTION FORCE (lbf)	
20060	9.5mm Arrow Push Mount, 4" Length	Black	9.2-10.0mm Hole	2.0-10 mm	Min.	1/4" (6.4mm)	Max.	10	Min.	40
					Max.	3/4" (19.1mm)	Typical	7	Typical	60

Tensile Strength 25 lbs. (11.34kg)

ARROW SLOT TIE STRAP LENGTH 5.5" / 140mm



PART #	DESCRIPTION	COLOR	TYPICAL MOUNT SIZE	PANEL THICKNESS	BUNDLE DIAMETER		INSERTION FORCE (lbf)		RETENTION FORCE (lbf)	
20115	Directional Slot Tie	Black	7mm x 12+mm Slot	Max. 3.6 mm	Min.	1/16" (1.59mm)	Max.	10	Min.	30
					Max.	1-1/2" (38.1mm)	Typical	6	Typical	45
20123	Directional Slot Tie	Gray	7mm x 12+mm	Max. 3.6 mm	Min.	1/16" (1.59mm)	Max.	10	Min.	30
					Max.	1-1/2" (38.1mm)	Typical	6	Typical	45

ARROW SLOT TIE STRAP LENGTH 5.5" / 140mm

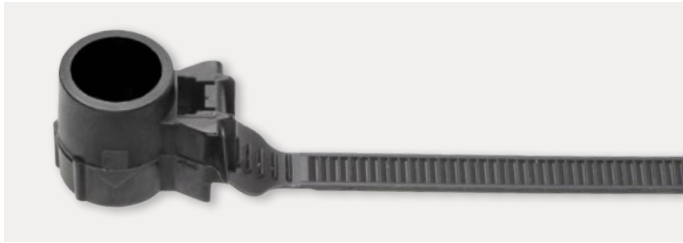


PART #	DESCRIPTION	COLOR	TYPICAL MOUNT SIZE	PANEL THICKNESS	BUNDLE DIAMETER		INSERTION FORCE (lbf)		RETENTION FORCE (lbf)	
20142	Slotted Offset Tie, Std, 15mm	Black	7mm x 12+mm	Max. 3.6 mm	Min.	1/16" (1.59mm)	Max.	10	Min.	40
					Max.	1-1/2" (38.1mm)	Typical	7	Typical	50
20143	Slotted Offset Tie, Rev, 15mm	Gray	7mm x 12+mm	Max. 3.6 mm	Min.	1/16" (1.59mm)	Max.	10	Min.	40
					Max.	1-1/2" (38.1mm)	Typical	7	Typical	50
20144	Slotted Offset Tie, Std, 25mm	Black	7mm x 12+mm	Max. 3.6 mm	Min.	1/16" (1.59mm)	Max.	10	Min.	40
					Max.	1-1/2" (38.1mm)	Typical	7	Typical	50
20147	Slotted Offset Tie, Rev, 25mm	Gray	7mm x 12+mm	Max. 3.6 mm	Min.	1/16" (1.59mm)	Max.	10	Min.	40
					Max.	1-1/2" (38.1mm)	Typical	7	Typical	50
20148	Slotted Offset Tie, Std, 35mm	Black	7mm x 12+mm	Max. 3.6 mm	Min.	1/16" (1.59mm)	Max.	10	Min.	40
					Max.	1-1/2" (38.1mm)	Typical	7	Typical	50
20149	Slotted Offset Tie, Rev, 35mm	Gray	7mm x 12+mm	Max. 3.6 mm	Min.	1/16" (1.59mm)	Max.	10	Min.	40
					Max.	1-1/2" (38.1mm)	Typical	7	Typical	50

Unless noted, all automotive ties minimum tensile is 50 lbs. / 22.68kg

STUD TIES

THREADED STUD STRAP LENGTH 7.5" / 190mm*



PART #	DESCRIPTION	COLOR	TYPICAL MOUNT SIZE	MIN. BOLT HEIGHT	BUNDLE DIAMETER		INSERTION FORCE (lbf)		RETENTION FORCE (lbf)	
10708	T5/M5/M6 Threaded Weld Stud	Black	T5/M5/M6 Studs	8.0 mm	Min. 1/16" (1.59mm)	Max. 1-3/4" (44.45mm)	Typical 8	20	Min. Typical 40	45
20015	T5/M5/M6 Threaded Weld Stud	Natural	T5/M5/M6 Studs	8.0 mm	Min. 1/16" (1.59mm)	Max. 1-3/4" (44.45mm)	Typical 8	20	Min. Typical 40	45
20010	T5/M5/M6 Threaded Weld Stud—High Temp.	Black	T5/M5/M6 Studs	8.0 mm	Min. 1/16" (1.59mm)	Max. 1-3/4" (44.45mm)	Typical 9	20	Min. Typical 40	55
20145*	Compact Threaded Weld Stud	Gray	T5/M5 Studs	3.0 mm	Min. 1/16" (1.59mm)	Max. 1-1/2" (38.1mm)	Typical 4.5	10	Min. Typical 40	54
20146*	Compact Threaded Weld Stud	Black	M6 Studs	3.0 mm	Min. 1/16" (1.59mm)	Max. 1-1/2" (38.1mm)	Typical 6.5	10	Min. Typical 40	57
20011	M8 Weld Stud	Black	M8 Studs	9.0 mm	Min. 1/4" (6.4mm)	Max. 1-3/4" (44.45mm)	Typical 4	10	Min. Typical 35	40
20013	M8 Weld Stud	Gray	M8 Studs	9.0 mm	Min. 1/4" (6.4mm)	Max. 1-3/4" (44.45mm)	Typical 4	10	Min. Typical 35	40
20014	M10 Weld Stud	Brown	M10 Studs	8.0 mm	Min. 1/16" (1.59mm)	Max. 1-3/4" (44.45mm)	Typical 4	10	Min. Typical 50	60
20116	M12 Weld Stud	Black	M12 Studs	8.0 mm	Min. 1/16" (1.59mm)	Max. 1-3/4" (44.45mm)	Typical 4	10	Min. Typical 40	43

*Strap Length 5.5" / 140mm

THREADED MOUNT STRAP LENGTH 7.5" / 190mm



PART #	DESCRIPTION	COLOR	TYPICAL MOUNT SIZE	MIN. BOLT HEIGHT	BUNDLE DIAMETER		INSERTION FORCE (lbf)		RETENTION FORCE (lbf)	
20051	M5/M6 Threaded Mount	Black	M5/M6 Studs	5.0 mm	Min. 1/4" (6.4mm)	Max. 1-3/4" (44.45mm)	Typical 4/8	10/12	Min. Typical 2/10	5/12
20062	M5/M6 Threaded Mount	Natural	M5/M6 Studs	5.0 mm	Min. 1/4" (6.4mm)	Max. 1-3/4" (44.45mm)	Typical 4/9	10/13	Min. Typical 2/11	5/13
20045	M6 Threaded Mount	Black	M6 Studs	5.0 mm	Min. 1/4" (6.4mm)	Max. 1-3/4" (44.45mm)	Typical 11	15	Min. Typical 12	15
20044	M8 Threaded Mount	Gray	M8 Studs	5.0 mm	Min. 1/4" (6.4mm)	Max. 1-3/4" (44.45mm)	Typical 8	10	Min. Typical 6	8
20139	M10 Threaded Mount	Black	M10 Studs	4.0 mm	Min. 1/4" (6.4mm)	Max. 1-3/4" (44.45mm)	Typical 5	10	Min. Typical 2	5

Unless noted, all automotive ties minimum tensile is 50 lbs. / 22.68kg

STUD TIES / CONNECTOR TIES

OFFSET MOUNT STRAP LENGTH 7.5" / 190mm



PART #	DESCRIPTION	COLOR	TYPICAL MOUNT SIZE	MIN. BOLT HEIGHT	BUNDLE DIAMETER	INSERTION FORCE (lbf)	RETENTION FORCE (lbf)
20065	25mm Offset, Reversed, Mount Tie	Black	M5/M6 Studs	5.0 mm	Min. 1/4" (6.4mm) Max. 1-3/4" (44.45mm)	Max. 12/15 Typical 7/10	Min. 5/13 Typical 6/15

SCREW MOUNT STRAP LENGTH 7.5" / 190mm



PART #	DESCRIPTION	COLOR	TYPICAL MOUNT SIZE	BUNDLE DIAMETER
08443	Screw Mount, HS	Black	#10 Screws	Min. 1/16" (1.59mm) Max. 1-3/4" (44.45mm)
20085	Screw Mount, HS	Natural	1/4" (6.35mm) Screw	Min. 1/4" (6.4mm) Max. 1-3/4" (44.45mm)

CONNECTOR TIES

T-SLOT CONNECTOR STRAP LENGTH 7.2" / 183mm



PART #	DESCRIPTION	COLOR	TYPICAL MOUNT SIZE	BUNDLE DIAMETER
20101	T-Slot Connector Tie	Black	Tyco Connector	Min. 1/16" (1.59mm) Max. 1-3/4" (44.45mm)
20111	ADAPEX Connector Tie	Black	FCI Connector	Min. 1/16" (1.59mm) Max. 1-3/4" (44.45mm)
20113	ADGT Connector Tie	Black	Delphi, JST Connector	Min. 1/16" (1.59mm) Max. 1-3/4" (44.45mm)
20124	ADFM Connector Tie	Black	Yazaki Connector	Min. 1/16" (1.59mm) Max. 1-3/4" (44.45mm)

Unless noted, all automotive ties minimum tensile is 50 lbs. / 22.68kg

SPECIALTY TIES

CONVOLUTED TUBING TIE 7.5" / 190.5mm



PART #	DESCRIPTION	COLOR	BUNDLE DIAMETER	
20093	Convoluted Tubing Tie,	Black	Min. 1/16" (1.59mm)	Max. 1-3/4" (44.45mm)

DOUBLE STRAP 6" / 152.4mm



PART #	DESCRIPTION	COLOR	BUNDLE DIAMETER	
20040	Double Strap-Black, HS	Black	Min. 1/4" (6.36mm)	Max. 1-5/8" (41.3MM)

Tensile minimum 20 lbs. (9.1kg)

STOPPER TIES 5.5" / 140mm



PART #	DESCRIPTION	COLOR	BUNDLE DIAMETER	
20097	5.5" Stopper GHS	Black	Min. 1/4" (6.36mm)	Max. 1-5/8" (41.3MM)

Tensile minimum 20 lbs. (9.1kg)

STOPPER TIES 8" / 203mm



PART #	DESCRIPTION	COLOR	BUNDLE DIAMETER	
20128	85mm Stopper	Black	Min. 1/4" (6.36mm)	Max. 1-5/8" (41.3MM)

Tensile minimum 40 lbs. (18kg)

Unless noted, all automotive ties minimum tensile is 50 lbs. / 22.68kg

Avery Dennison also supplies the automotive industry with a wide selection of standard and specialty cable ties in heat resistant Nylon 6/6. Please see pages 2-21 for fastener details and listings.

CONTRACTOR GRADE CABLE TIES

SMART PART NUMBERING

CT 0190 N 050 N M

CABLE TIE IDENTIFIER

CT	Cable Tie	SM	Saddle Mount
SM	Screw Mount	MP	Merchandising Pairing
PM	Push Mount	IL	In-Line
WM	Wriged Push Mount	ST	Stopper
DH	Double Headed	IDP	Identifier (Perpendicular)
DL	Double Locking	IDI	Identifier (In-Line)
RT	Releaseable	IDF	Identifier (Flag)
RR	Releaseable Regular	IDL	Identifier (Large Flag)
		CS	Slim Line (when b does not distinguish from regular ties)

Cable tie NOMINAL LENGTH in mm

MATERIAL

N	Nylon 6/6
W	Weather Resistant
H	Heat Stabilized
L	Low Temperature (Nylon 12)
P	Polypropylene

TENSILE STRENGTH in lbs.

COLOR

N	Natural
K	Black
R	Red
G	Green
B	Blue
Y	Yellow
O	Orange
S	Special or Specified PMS Color

BAG QTY.

X	10
Q	25
L	50
C	100
D	500
M	1,000

3-1/8" MINIATURE

PART #	LENGTH	COLOR	STRENGTH	BAG QTY.	CASE QTY.
CT0080N018NM	3.125"	Natural	18	1,000	25,000

4" MINIATURE

PART #	LENGTH	COLOR	STRENGTH	BAG QTY.	CASE QTY.
CT0100N018NM	4"	Natural	18	1,000	25,000
CT0100N018NC	4"	Natural	18	100	5,000
CT0100N018KM	4"	Black	18	100	5,000
CT0100N018KC	4"	Black	18	1,000	25,000
CT0100W018KM	4"	Weather Resistant	18	1,000	25,000
CT0100W018KC	4"	Weather Resistant	18	100	5,000

5.5" INTERMEDIATE

PART #	LENGTH	COLOR	STRENGTH	BAG QTY.	CASE QTY.
CT0140N040NM	5.5"	Natural	40	1,000	5,000
CT0140N040NC	5.5"	Natural	40	100	5,000
CT0140N040KC	5.5"	Black	40	100	5,000
CT0140N040KM	5.5"	Black	40	1,000	5,000
CT0140W040KM	5.5"	Weather Resistant	40	1,000	5,000
CT0140W040KC	5.5"	Weather Resistant	40	100	5,000
CT0140N040OM	5.5"	Natural	40	1,000	5,000
CT0140N040BM	5.5"	Blue	40	1,000	5,000
CT0140N040GC	5.5"	Green	40	100	5,000

8" INTERMEDIATE

PART #	LENGTH	COLOR	STRENGTH	BAG QTY.	CASE QTY.
CT0200N040NM	8"	Natural	40	1,000	5,000
CT0200N040NC	8"	Natural	40	100	5,000
CT0200N040KM	8"	Black	40	1,000	5,000
CT0200N040KC	8"	Black	40	100	5,000
CT0200W040KM	8"	Weather Resistant	40	1,000	5,000
CT0200W040KC	8"	Weather Resistant	40	100	5,000
CT0200N040BC	8"	Intermediate (Blue)	40	100	5,000
CT0200N040GC	8"	Intermediate (Green)	40	100	5,000
CT0200N040RC	8"	Intermediate (Red)	40	100	5,000

CONTRACTOR GRADE CABLE TIES

7.5" STANDARD

PART #	LENGTH	COLOR	STRENGTH	BAG QTY.	CASE QTY.
CT0190N050NM	7.5"	Natural	50	1,000	5,000
CT0190N050NC	7.5"	Natural	50	100	5,000
CT0190N050KM	7.5"	Black	50	1,000	5,000
CT0190N050KC	7.5"	Black	50	100	5,000
CT0190W050KM	7.5"	Weather Resistant	50	1,000	5,000
CT0190W050KC	7.5"	Weather Resistant	50	100	5,000

11" STANDARD

PART #	LENGTH	COLOR	STRENGTH	BAG QTY.	CASE QTY.
CT0280N050NM	11"	Natural	50	1,000	5,000
CT0280N050NC	11"	Natural	50	100	5,000
CT0280N050KM	11"	Black	50	1,000	5,000
CT0280N050KC	11"	Black	50	100	5,000
CT0280W050KM	11"	Weather Resistant	50	1,000	5,000
CT0280W050KC	11"	Weather Resistant	50	100	5,000

14.5" STANDARD

PART #	LENGTH	COLOR	STRENGTH	BAG QTY.	CASE QTY.
CT0370N050NM	14.5"	Natural	50	1,000	5,000
CT0370N050ND	14.5"	Natural	50	500	5,000
CT0370N050NC	14.5"	Natural	50	100	1,000
CT0370N050KC	14.5"	Black	50	100	1,000
CT0370W050KM	14.5"	Weather Resistant	50	1,000	5,000
CT0370W050KD	14.5"	Weather Resistant	50	500	5,000
CT0370W050KC	14.5"	Weather Resistant	50	100	1,000

17" STANDARD

PART #	LENGTH	COLOR	STRENGTH	BAG QTY.	CASE QTY.
CT0430N050NC	17"	Natural	50	100	5,000
CT0430W050KC	17"	Weather Resistant	50	100	5,000

17.75" STANDARD

PART #	LENGTH	COLOR	STRENGTH	BAG QTY.	CASE QTY.
CT0450N050NC	17.75"	Natural	50	100	5,000

19.6875" STANDARD

PART #	LENGTH	COLOR	STRENGTH	BAG QTY.	CASE QTY.
CT0530N050NC	19.6875"	Natural	50	100	1,000

CONTRACTOR GRADE CABLE TIES

PART #	LENGTH	COLOR	STRENGTH	BAG QTY.	CASE QTY.
13.5" HEAVY DUTY					
CT0340N120NC	13.5"	Natural	120	100	1,000
CT0340W120KC	13.5"	Weather Resistant	120	100	1,000
15" HEAVY DUTY					
CT0380N120NC	15"	Natural	120	100	1,000
CT0380N120KC	15"	Black	120	100	1,000
CT0380W120KC	15"	Weather Resistant	120	100	1,000
21.6875" HEAVY DUTY					
CT0530N175NC	21.6875"	Natural	175	100	1,000
CT0530W175KC	21.6875"	Weather Resistant	175	100	1,000
24" EXTRA HEAVY DUTY					
CT0610N175NC	24"	Natural	175	100	1,000
CT0610W175KC	24"	Weather Resistant	175	100	1,000
28" EXTRA HEAVY DUTY					
CT0710N175NC	28"	Natural	175	100	1,000
CT0710W175KC	28"	Weather Resistant	175	100	1,000
36" EXTRA HEAVY DUTY					
CT0915N175NL	36"	Natural	175	50	500
CT0915W175KL	36"	Weather Resistant	175	50	500
48" EXTRA HEAVY DUTY					
CT1220N175NL	48"	Natural	175	50	500
CT1220W175KL	48"	Weather Resistant	175	50	500
SLIM LINE					
CT0140N018NM	5.5"	Natural	18	1,000	5,000
CT0165N018NC	6.5"	Natural	18	100	5,000
CT0165N018NM	6.5"	Natural	18	1,000	5,000
CT0165W018KC	6.5"	Weather Resistant	18	100	5,000
CT0165N018BC	6.5"	Blue	18	100	5,000
CT0165N018GC	6.5"	Green	18	100	5,000
CT0165N018YC	6.5"	Yellow	18	100	5,000
CT0200N018NC	8"	Natural	18	100	5,000
CT0200N018KM	8"	Black	18	1,000	5,000
CT0200N018KC	8"	Black	18	100	5,000
CT0200N018BC	8"	Blue	18	100	5,000
CT0200N018NM	8"	Natural	18	100	5,000
CT0200W018KC	8"	Weather Resistant	18	100	5,000
CT0200W018KM	8"	Weather Resistant	18	1,000	5,000

CONTRACTOR GRADE CABLE TIES

PUSH MOUNT

PART #	LENGTH	COLOR	STRENGTH	BAG QTY.	CASE QTY.
PM0200N050NM	8"	Natural	50	1,000	5,000

SCREW MOUNT

PART #	LENGTH	COLOR	STRENGTH	BAG QTY.	CASE QTY.
SM0150N040NC	6"	Natural	40	100	1,000
SM0150W040KC	6"	Weather Resistant	40	100	5,000
SM0200N050NC	8"	Natural	50	100	1,000
SM0200W050KC	8"	Weather Resistant	50	100	1,000
SM0370N050NC	14.5"	Natural	50	100	1,000
SM0370W050KC	14.5"	Weather Resistant	50	100	1,000
SM0380N120NC	15"	Natural	120	100	1,000
SM0380W120KC	15"	Weather Resistant	120	100	1,000

RELEASABLE (FLAT IN-LINE RELEASE)

PART #	LENGTH	COLOR	STRENGTH	BAG QTY.	CASE QTY.
RT0150N050KC	6"	Flat (Black)	50	100	5,000
RT0300N050KC	11.875"	Flat (Black)	50	100	5,000

IDENTIFICATION

PART #	LENGTH	COLOR	STRENGTH	BAG QTY.	CASE QTY.
IDP100N018NC	4"	Natural, Ext.-Perpendicular Flag	18	100	1,000
IDF110N018NM	4"	Natural, Flag (ext. beyond head)	18	1,000	5,000
IDI200N050NC	8"	Natural In-line Flag	50	100	1,000

MOUNT

PART #	LENGTH	COLOR	STRENGTH	BAG QTY.	CASE QTY.
CM1510N	3/5" x 2/5"	Saddle Mount	n/a	100	1,000
CM2316N	7/8" x 5/8"	Saddle Mount	n/a	100	1,000
CM1919N	3/4" x 3/4"	Acrylic Adhesive Mount (Natural)	n/a	100	1,000
CM2121K	13/16" x 13/16"	Acrylic Adhesive Mount (Black)	n/a	100	1,000
CM2828N	1" x 1"	Acrylic Adhesive Mount (Natural)	n/a	100	1,000
CM2828K	1" x 1"	Acrylic Adhesive Mount (Black)	n/a	100	1,000
CM3838N	1-1/2" x 1-1/2"	Acrylic Adhesive Mount (Natural)	n/a	100	1,000
CM3838K	1-1/2" x 1-1/2"	Acrylic Adhesive Mount (Black)	n/a	100	1,000

INSTALLATION TOOL

PART #	LENGTH	COLOR	STRENGTH	BAG QTY.	CASE QTY.
FTG6	n/a	Disposable Tool	18-50lb ties	1	1

MILITARY SPECIFICATIONS CROSS REFERENCE

MILITARY SPECIFICATIONS	DESCRIPTION		PART#
MS-3367-1-0	7.5" /190.5mm 7.5" /190.5mm	Black weather resistant Black heat stabilized (Super Bar-Lok®)	08388, 08437 10003, 10005
MS-3367-1-9	7.5" /190.5mm 7.5" /190.5mm	Natural Natural (Super Bar-Lok®)	08387, 08436 10001, 10004
MS-3367-2-0	15" /381mm 15" /381mm	Black weather resistant Black heat stabilized (Super Bar-Lok®)	10037, 08428 10008, 10345
MS-3367-2-9	15" /381mm 15" /381mm	Natural Natural (Super Bar-Lok®)	10036, 08427 10006, 10344
MS-3367-3-0	14.5" /368.3mm 21" /533.4mm 24" /609.6mm	Black weather resistant Black weather resistant Black weather resistant	10039, 08382 10608 10614
MS-3367-3-9	14.5" /368.3mm 21" /533.4mm 24" /609.6mm	Natural Natural Natural	10038, 08378 10606 10612
MS-3367-4-0	4" /101.6mm 8" /203.2mm 6" /152.4mm	Black weather resistant Black weather resistant slim line Black weather resistant slim line	08433, 08435 10327, 10330 10393, 10396
MS-3367-4-2	4" /101.6mm	Red	08508
MS-3367-4-3	4" /101.6mm	Orange	08582
MS-3367-4-4	4" /101.6mm	Yellow	08583
MS-3367-4-5	4" /101.6mm	Green	08584
MS-3367-4-6	4" /101.6mm	Blue	08587
MS-3367-4-9	4" /101.6mm 8" /203.2mm 6" /152.4mm	Natural Natural slim line Natural slim line	08432, 08434 10325, 10328 10391, 10394
MS-3367-5-0	5.5" /139.7mm 8" /203.2mm	Black weather resistant Black weather resistant	08431, 08384 08380, 08386
MS-3367-5-2	8" /203.2mm	Red	08690
MS-3367-5-4	8" /203.2mm	Yellow	08782
MS-3367-5-5	8" /203.2mm	Green	08664
MS-3367-5-6	8" /203.2mm	Blue	08671
MS-3367-5-9	5.5" /139.7mm 8" /203.2mm 11.5" /292.1mm	Natural Natural Natural slim line	08376, 08383 08377, 08385 10985
MS-3367-6-0	28" /711.2mm	Black weather resistant	10620
MS-3367-6-9	28" /711.2mm	Natural	10618
MS-3367-7-0	11" /279.4mm	Black weather resistant	08286, 08930
MS-3367-7-9	11" /279.4mm	Natural	08600, 08859
MS-3368-1-9A	7.5" /190.5mm	Natural ID	08413, 08419
MS-3368-5-9E	4" /101.6mm	Natural ID	08412, 08417

CROSS REFERENCE PANDUIT

PANDUIT	PANDUIT DIFFERENCES	DESCRIPTION	SIZE/TENSILE STRENGTH	PACKAGE QUANTITY	AVERY DENNISON
ABM2S-A-C		Rubber ADH MNT	1"	100/Bag	10030
ABM2S-AT-C		Acrylic ADH MNT	1"	100/Bag	08462
ABMM-A-C		Rubber ADH MNT	3/4"	100/Bag	10029
ABMM-AT-C		Acrylic ADH MNT	3/4"	100/Bag	08461
AM2-C	1.24"	Plain Backed MNT	1"	100/Bag	08463
FCC-A-C8	PVC GR	ADH Flat Cable Clip		100/Bag	08406
GS2B, GS2BL		Hand Tool		1	08480
GS4H		HD Hand Tool		1	10639
LPMS-S8-C		Low Profile MNT	#8 SCR	100/Bag	08458
MP150-C		ID Plate	1.5" x 3/4"	100/Bag	08457
PLB2S-C30	7.6"	Black HS Double Head	7.5" / 50 lbs.	100/Bag	10428
PLB2S-M	7.6"	Natural Double Head	7.5" / 50 lbs.	1m/Bag	10424
PLB2S-M0	7.6"	Black WR Double Head	7.5" / 50 lbs.	1m/Bag	10426
PLB2S-M30	7.6"	Black HS Double Head	7.5" / 50 lbs.	1m/Bag	10425
PLB3S-C30	11.8"	Black HS Double Head	11" / 50 lbs.	100/Bag	10434
PLB3S-M	11.8"	Natural Double Head	11" / 50 lbs.	1m/Bag	10430
PLB3S-M0	11.8"	Black WR Double Head	11" / 50 lbs.	1m/Bag	10432
PLB3S-M30	11.8"	Black HS Double Head	11" / 50 lbs.	1m/Bag	10431
PLC2S-S10-C	7.9"	Natural S-MNT	7.5" / 50 lbs.	100/Bag	08484
PLC2S-S10-C0	7.9"	Black WR S-MNT	7.5" / 50 lbs.	100/Bag	08318
PLC2S-S10-M	7.9"	Natural S-MNT	7.5" / 50 lbs.	1m/Bag	08415
PLC2S-S10-M0	7.9"	Black WR S-MNT	7.5" / 50 lbs.	1m/Bag	08444
PLC2S-S10-M30	7.9"	Black HS S-MNT	7.5" / 50 lbs.	1m/Bag	08443
PLC3S-S10-C	12"	Natural S-MNT	11" / 50 lbs.	100/Bag	10353
PLC3S-S10-C0	12"	Black WR S-MNT	11" / 50 lbs.	100/Bag	10354
PLC3S-S10-M	12"	Natural S-MNT	11" / 50 lbs.	1m/Bag	10350
PLC3S-S10-M0	12"	Black WR S-MNT	11" / 50 lbs.	1m/Bag	10352
PLC3S-S10-M30	12"	Black HS S-MNT	11" / 50 lbs.	1m/Bag	10351
PLC4H-S25-D	15.2", 500/Bag	Natural S-MNT	14.5" / 120 lbs.	100/Bag	10035
PLC4H-S25-DO	15.2", 500/Bag	Black WR S-MNT	14.5" / 120 lbs.	100/Bag	10040
PLC4H-S25-D30	15.2", 500/Bag	Black HS S-MNT	14.5" / 120 lbs.	100/Bag	08441
PLC4H-S25-L	15.2"	Natural S-MNT	14.5" / 120 lbs.	50/Bag	08426
PLC4H-S25-L0	15.2"	Black WR S-MNT	14.5" / 120 lbs.	50/Bag	08442
PLM1M-C	3.9"	Natural ID	4" / 18 lbs.	100/Bag	08417
PLM1M-M	3.9"	Natural ID	4" / 18 lbs.	1m/Bag	08412
PLN1M-M10	3.9"	WH ID	4" / 18 lbs.	1m/Bag	10031
PLM2S-C	7.4"	Natural ID	7.5" / 50 lbs.	100/Bag	08419
PLM2S-M	7.4"	Natural ID	7.5" / 50 lbs.	1m/Bag	08413
PLP2S-C	7.9"	Natural P-MNT	7.5" / 50 lbs.	100/Bag	08439
PLP2S-C30	7.9"	Black HS P-MNT	7.5" / 50 lbs.	1m/Bag	08445
PLP2S-M	7.9"	Natural P-MNT	7.5" / 50 lbs.	1m/Bag	08414
PLP2S-M0	7.9"	Black WR P-MNT	7.5" / 50 lbs.	1m/Bag	08446
PLT.7M-C	3.1"	Natural	3.25" / 18 lbs.	100/Bag	08519
PLT.7M-CO	3.1"	Black WR	3.25" / 18 lbs.	100/Bag	08337
PLT.7M-M	3.1"	Natural	3.25" / 18 lbs.	1m/Bag	08429
PLT.7M-MO	3.1"	Black WR	3.25" / 18 lbs.	1m/Bag	08510
PLT.7M-M30	3.1"	Black HS	3.25" / 18 lbs.	1m/Bag	08509
PLT1M-C	3.9"	Natural	4" / 18 lbs.	100/Bag	08434
PLT1M-CO	3.9"	Black WR	4" / 18 lbs.	100/Bag	08435
PLT1M-M	3.9"	Natural	4" / 18 lbs.	1m/Bag	08432
PLT1M-MO	3.9"	Black WR	4" / 18 lbs.	1m/Bag	08433
PLT1M-M2	3.9"	Red	4" / 18 lbs.	1m/Bag	08508
PLT1M-M3	3.9"	Orange	4" / 18 lbs.	1m/Bag	08582
PLT1M-M4	3.9"	Yellow	4" / 18 lbs.	1m/Bag	08583

CROSS REFERENCE PANDUIT

PANDUIT	PANDUIT DIFFERENCES	DESCRIPTION	SIZE/TENSILE STRENGTH	PACKAGE QUANTITY	AVERY DENNISON
PLT1M-M5	3.9"	Green	4" / 18 lbs.	1m/Bag	08584
PLT1M-M6	3.9"	Blue	4" / 18 lbs.	1m/Bag	08587
PLT1M-M7	3.9"	Purple	4" / 18 lbs.	1m/Bag	08586
PLT1M-M30	3.9"	Black HS	4" / 18 lbs.	1m/Bag	08404
PLT1.5I-C	5.6"	Natural	5.5" / 40 lbs.	100/Bag	08383
PLT1.5I-CO	5.6"	Black WR	5.5" / 40 lbs.	100/Bag	08384
PLT1.5I-M	5.6"	Natural	5.5" / 40 lbs.	1m/Bag	08376
PLT1.5I-MO	5.6"	Black WR	5.5" / 40 lbs.	1m/Bag	08431
PLT1.5I-M30	5.6"	Black HS	5.5" / 40 lbs.	1m/Bag	08400
PLT1.5M-C	5.6"	Natural Slim Line	6" / 18 lbs.	100/Bag	10394
PLT1.5M-CO	5.6"	Black WR Slim Line	6" / 18 lbs.	100/Bag	10396
PLT1.5M-C30	5.6"	Black HS Slim Line	6" / 18 lbs.	100/Bag	10395
PLT1.5M-M	5.6"	Natural Slim Line	6" / 18 lbs.	1m/Bag	10391
PLT1.5M-MO	5.6"	Black WR Slim Line	6" / 18 lbs.	1m/Bag	10393
PLT1.5M-M30	5.6"	Black HS Slim Line	6" / 18 lbs.	100/Bag	10392
PLT2I-C		Natural Natural Ladder	8" / 40 lbs. 7" / 40 lbs.	100/Bag 100/Bag	08385 08476
PLT2I-CO		Black WR	8" / 40 lbs.	100/Bag	08386
PLT2I-C30	8"	Black HS Ladder	7" / 40 lbs.	100/Bag	08478
PLT2I-M		Natural Natural Ladder	8" / 40 lbs. 7" / 40 lbs.	1m/Bag 1m/Bag	08377 08470
PLT2I-M2		Red	8" / 40 lbs.	1m/Bag	08690
PLT2I-M3		Orange	8" / 40 lbs.	1m/Bag	08780
PLT2I-M4		Yellow	8" / 40 lbs.	1m/Bag	08782
PLT2I-M5		Green	8" / 40 lbs.	1m/Bag	08664
PLT2I-M6		Blue	8" / 40 lbs.	1m/Bag	08671
PLT2I-M7		Purple	8" / 40 lbs.	1m/Bag	08680
PLT2I-M30		Black HS Black HS Ladder	8" / 40 lbs. 7" / 40 lbs.	1m/Bag 1m/Bag	08401 08472
PLT2I-MO		Black WR	8" / 40 lbs.	1m/Bag	08380
PLT2M-C		Natural Slim Line	8" / 18 lbs.	100/Bag	10328
PLT2M-CO		Black WR Slim Line	8" / 18 lbs.	100/Bag	10330
PLT2M-C30		Black HS Slim Line	8" / 18 lbs.	100/Bag	10329
PLT2M-M		Natural Slim Line	8" / 18 lbs.	1m/Bag	10325
PLT2M-MO		Black WR Slim Line	8" / 18 lbs.	1m/Bag	10327
PLT2M-M30		Black HS Slim Line	8" / 18 lbs.	1m/Bag	10326
PLT2S-C	7.4" 7.4" 7.4"	Natural Natural Super BL Natural Ladder	7.5" / 50 lbs. 7.5" / 50 lbs. 7" / 40 lbs.	100/Bag 100/Bag 100/Bag	08436 100004 08476
PLT2S-CO	7.4"	Black WR	7.5" / 50 lbs.	100/Bag	08437
PLT2S-C30	7.4" 7.4"	Black HS Super BL Black HS Ladder	7.5" / 50 lbs. 7" / 40 lbs.	100/Bag 100/Bag	10005 08478
PLT2S-MO	7.4"	Black WR	7.5" / 50 lbs.	100/Bag	08388
PLT2S-M	7.4" 7.4" 7.4"	Natural Natural Super BL Natural Ladder	7.5" / 50 lbs. 7.5" / 50 lbs. 7" / 40 lbs.	1m/Bag 1m/Bag 1m/Bag	08387 10001 08470
PLT2S-M30	7.4" 7.4" 7.4"	Black HS Black HS Super BL Black HS Ladder	7.5" / 50 lbs. 7.5" / 50 lbs. 7" / 40 lbs.	1m/Bag 1m/Bag 1m/Bag	08402 10003 08472
PLT3I-C	11.4"	Natural Ladder	11" / 40 lbs.	100/Bag	08477
PLT3I-C30	11.4"	Black HS Ladder	11" / 40 lbs.	100/Bag	08479
PLT3I-M	11.4"	Natural Ladder	11" / 40 lbs.	1m/Bag	08471
PLT3I-M30	11.4"	Black HS Ladder	11" / 40 lbs.	1m/Bag	08473
PLT3S-C	11.5"	Natural	11" / 50 lbs.	100/Bag	08859
PLT3S-CO	11.5"	Black WR	11" / 50 lbs.	100/Bag	08930

CROSS REFERENCE PANDUIT

PANDUIT	PANDUIT DIFFERENCES	DESCRIPTION	SIZE/TENSILE STRENGTH	PACKAGE QUANTITY	AVERY DENNISON
PLT3S-MO	11.5"	Black WR	11" / 50 lbs.	1m/Bag	08286
PLT3S-M	11.5"	Natural	11" / 50 lbs.	1m/Bag	08600
PLT3S-M30	11.5"	Black HS	11" / 50 lbs.	1m/Bag	08056
PLT4H-L		Natural	14.5" / 120 lbs.	50/Bag	08378
PLT4H-LO		Black WR	14.5" / 120 lbs.	50/Bag	08382
PLT4H-L30	50 / Bag	Black HS	14.5" / 120 lbs.	100/Bag	08403
PLT4I-C	14.6"	Natural Slim Line	15" / 40 lbs.	100/Bag	10338
PLT4I-M	14.6"	Natural Slim Line	15" / 40 lbs.	1m/Bag	10335
PLT4S-C	14.5"	Natural	15" / 50 lbs.	100/Bag	08427
	14.5"	Natural Super BL	15" / 50 lbs.	100/Bag	10006
PLT4S-CO	14.5"	Black WR	15" / 50 lbs.	100/Bag	08428
PLT4S-C30	14.5"	Black HS	15" / 50 lbs.	100/Bag	08416
	14.5"	Black HS Super BL	15" / 50 lbs.	100/Bag	10008
PTL4S-M	14.5", 1m / Bag	Natural	15" / 50 lbs.	500/Bag	10036
	14.5", 1m / Bag	Natural Super BL	15" / 50 lbs.	500/Bag	10344
PLT4S-MO	14.5", 1m / Bag	Black WR	15" / 50 lbs.	500/Bag	10037
PLT4S-M30	14.5", 1m / Bag	Black HS	15" / 50 lbs.	500/Bag	10408
	14.5", 1m / Bag	Black HS Super BL	15" / 50 lbs.	500/Bag	10345
PLT7LH-L	24.7"	Natural	24" / 120 lbs.	50/Bag	10612
PLT7LH-LO	24.7"	Black WR	24" / 120 lbs.	50/Bag	10614
PLT7LH-L30	24.7"	Black HS	24" / 120 lbs.	50/Bag	10613
PLT8H-L	30.6", 50/Bag	Natural	33" / 175 lbs.	25/Bag	10049
PLT8H-LO	30.6", 50/Bag	Black WR	33" / 175 lbs.	25/Bag	10050
PLT8LH-L	27.6"	Natural	28" / 120 lbs.	50/Bag	10618
PLT8LH-LO	27.6"	Black WR	28" / 120 lbs.	50/Bag	10620
PLT8LH-30	27.6"	Black HS	28" / 120 lbs.	50/Bag	10619
PLWP2S-M	7.8"	Natural WNG P-MNT	7.5" / 50 lbs.	1m/Bag	10580
PLWP2S-MO	7.8"	Black WR WNG P-MNT	7.5" / 50 lbs.	1m/Bag	10582
PLWP2S-M30	7.8"	Black HS WNG P-Mount	7.5" / 50 lbs.	1m/Bag	10581
PM2H25-C		Push-In Mount	1/4" Hole	100/Bag	10056
PPTS		Pneumatic Hand Tool		1	08381
PRT2S-C	7.4"	Natural RLSBL	7.5" / 50 lbs.	100/Bag	10364
PRT2S-CO	7.4"	Black WR RLSBL	7.5" / 50 lbs.	100/Bag	10366
PRT2S-C30	7.4"	Black HS RLSBL	7.5" / 50 lbs.	100/Bag	10365
PRT2S-M	7.4"	Natural RLSBL	7.5" / 50 lbs.	1m/Bag	10361
PRT2S-MO	7.4"	Black WR RLSBL	7.5" / 50 lbs.	1m/Bag	10363
PRT2S-M30	7.4"	Black HS RLSBL	7.5" / 50 lbs.	1m/Bag	10362
PRT3S-C	11.5"	Natural RLSBL	11" / 50 lbs.	100/Bag	10370
PRT3S-CO	11.5"	Black WR RLSBL	11" / 50 lbs.	100/Bag	10372
PRT3S-C30	11.5"	Black HS	11" / 50 lbs.	100/Bag	10371
PRT3S-M	11.5"	Natural RLSBL	11" / 50 lbs.	1m/Bag	10367
PRT3S-MO	11.5"	Black WR RLSBL	11" / 50 lbs.	1m/Bag	10369
PRT3S-M30	11.5"	Black HS RLSBL	11" / 50 lbs.	1m/Bag	10368
PX-O		Black Marking Pen		12/Carton	08506
STHV		Hand Tool		1	10257
STS		Bar-Lok II Tool		1	10624
TAIS8-C		Tie Anchor Base	#8 SCR	100/Bag	10027
TAS10-C		Tie Anchor Base	#10 SCR	100/Bag	10028
TM1S4-C		Cradle Mount	Small #4 SCR	100/Bag	10044
TM3S10-C		Cradle Mount	Large #10 SCR	100/Bag	10046
TM3S25-C		Cradle Mount HS	Large 1/4" SCR		10079
TM3S8-C		Cradle Mint	Medium #8 SCR		10045

CROSS REFERENCE THOMAS AND BETTS

T&B	T&B DIFFERENCES	DESCRIPTION	SIZE/TENSILE STRENGTH	PACKAGE QUANTITY	AVERY DENNISON
TY528M		Natural	15" / 50 lbs.	100/Bag	08427
		Natural (Super BL)	15" / 50 lbs.	100/Bag	10006
TY528MX	14.2"	Black WR	15" / 50 lbs.	100/Bag	08428
TY529M	30"	Natural	28" / 120 lbs.	50/Bag	10618
TY529MX	30"	Black WR	28" / 120 lbs.	50/Bag	10620
TY535M	7.8"	Natural S-Mount	7.5" / 50 lbs.	100/Bag	08484
TY535MX	7.8"	Black WR S-Mount	7.5" / 50 lbs.	100/Bag	08318
TY537M	13.9"	Natural S-Mount	14.5" / 120 lbs.	50/Bag	08426
TY537MX	13.9"	Black WR S-Mount	14.5" / 120 lbs.	50/Bag	08442
TY538M	7.8"	Natural P-Mount	7.5" / 50 lbs.	100/Bag	08439
TY546M	7.25"	Natural ID	7.5" / 50 lbs.	100/Bag	08419
TY553M		Natural ID	4" / 18 lbs.	100/Bag	08417
TY5232M		Natural Slim Line	8" / 18 lbs.	100/Bag	10328
TY5232MX		Black WR Slim Line	8" / 18 lbs.	100/Bag	10330
TY5242M	8.2"	Natural	8" / 40 lbs.	100/Bag	08385
TY5242MX	8.2"	Black WR	8" / 40 lbs.	100/Bag	08386
TY5244M	14.5"	Natural Slim Line	15" / 40 lbs.	100/Bag	10338
TY5244MX	14.5"	Black HS Slim Line	15" / 40 lbs.	100/Bag	10339
TY5253M	11.4"	Natural	11" / 50 lbs.	100/Bag	08859
	11.4"	Natural (Ladder)	11" / 40 lbs.	100/Bag	08477
TY5253MX	11.4"	Black WR	11" / 50 lbs.	100/Bag	08930
TY5277M	24.3"	Natural	24" / 120 lbs.	50/Bag	10612
TY5277MX	24.3"	Black WR	24" / 120 lbs.	50/Bag	10614
TY52315M	7"	Natural Slim Line	6" / 18 lbs.	100/Bag	10394
TY52315MX	7"	Black WR Slim Line	6" / 18 lbs.	100/Bag	10396
TYB2315M	7"	Natural Slim Line	6" / 18 lbs.	1M/Bag	10391
TYB2315MX	7"	Black WR Slim Line	6" / 18 lbs.	1M/Bag	10393
TYH24M	30 lbs.	Black HS	5.5" / 40 lbs.	1M/Bag	08400
TYH25M	7.3"	Black HS	7.5" / 50 lbs.	1M/Bag	08402
	7.3"	Black HS (Super BL)	7.5" / 50 lbs.	1M/Bag	10003
	7.3"	Black HS (Ladder)	7" / 40 lbs.	1M/Bag	08472
TYH27M	1M/BG	Black HS	14.5" / 120 lbs.	100/Bag	08403
TYH28M	14.2", 1M/Bag	Black HS	15" / 50 lbs.	500/Bag	10408
	14.2", 1M/Bag	Black HS (Super BL)	15" / 50 lbs.	500/Bag	10345
TYR505	500/Bag	Natural RLSBL	7.5" / 50 lbs.	1M/Bag	10361
TRY508	500/Bag	Natural RLSBL	11" / 50 lbs.	1M/Bag	10367
WT1, WT2		Bar-Lok II Tool		1	10624
WT163M-1	1/carton	Black Marking Pen		12/Carton	08506
WT193A		Hand Tool		1	08480
WT197, WT199		Extra HD Tool		1	10257

CROSS REFERENCE THOMAS AND BETTS

T & B	T & B DIFFERENCES	DESCRIPTION	SIZE / TENSILE STRENGTH	PACKAGE QUANTITY	AVERY DENNISON
TC102		Low Profile Mount	#8 SCR	100/Bag	08458
TC124	1M/Bag	ID Plate	1.5" x 3/4"	100/Bag	08457
TC140	500/Bag	Cradle Mount	Small #4 SCR	100/Bag	10044
TC344A		Rubber ADH Mount Acrylic ADH Mount	3/4" 3/4"	100/Bag 100/Bag	10029 08461
TC345A		Rubber ADH Mount Acrylic ADH Mount	1" 1"	100/Bag 100/Bag	10030 08462
TC347		Plain Backed Mount	1"	100/Bag	08463
TC5142		Cradle Mount	Large #10 SCR	100/Bag	10046
TC5823		Push-In Mount	1/4" Hole	1M/Bag	10056
TC5828		Tie Anchor Base	#8 SCR	1M/Bag	10027
TR227		Pneumatic Hand Tool		1	08381
TY23M	3.6"	Natural	4" / 18 lbs.	1M/Bag	08432
TY23MX	3.6"	Black WR	4" / 18 lbs.	1M/Bag	08433
TY24M	30 lbs.	Natural	5.5" / 40 lbs.	1M/Bag	08376
TY24MX	30 lbs.	Black WR	5.5" / 40 lbs.	1M/Bag	08431
TY25M	7.3" 7.3" 7.3"	Natural Natural (Super BL) Natural (Ladder)	7.5" / 50 lbs. 7.5" / 50 lbs. 7" / 40 lbs.	1M/Bag 1M/Bag 1M/Bag	08387 10001 08470
TY25MX	7.3"	Black WR	7.5" / 50 lbs.	1M/Bag	08388
TY26M	11.1" 11.1"	Natural (Ladder) Natural	11" / 40 lbs. 11" / 50 lbs.	1M/Bag 1M/Bag	08471 08600
TY27M	13.4", 500/Bag	Natural	14.5" / 120 lbs.	100/Bag	10038
TY27MX	13.4", 500/Bag	Black WR	14.5" / 120 lbs.	100/Bag	10039
TY28M	14.2", 1M/Bag 14.2", 1M/Bag	Natural Natural (Super BL)	15" / 50 lbs. 15" / 50 lbs.	500/Bag 500/Bag	10036 10344
TY28MX	14.2", 1M/Bag	Black WR	15" / 50 lbs.	500/Bag	10037
TY35M	7.8"	Natural S-Mount	7.5" / 50 lbs.	1M/Bag	08415
TY35MX	7.8"	Black WR S-Mount	7.5" / 50 lbs.	1M/Bag	08444
TY37M	14.5", 1M/Bag	Natural S-Mount	14.5" / 120 lbs.	100/Bag	10035
TY37MX	13.9", 500/Bag	Black WR S-Mount	14.5" / 120 lbs.	100/Bag	10040
TY38M	7.8"	Natural P-Mount	7.5" / 50 lbs.	1M/Bag	08414
TY46M		Natural ID	7.5" / 50 lbs.	1M/Bag	08413
TY53M		Natural ID	4" / 18 lbs.	1M/Bag	08412
TY232M		Natural Slim Line	8" / 18 lbs.	1M/Bag	10325
TY232MX		Black WR Slim Line	8" / 18 lbs.	1M/Bag	10327
TY242M	8.2"	Natural	8" / 40 lbs.	1M/Bag	08377
TY242MX	8.2"	Black WR	8" / 40 lbs.	1M/Bag	08380
TY244M	14.5"	Natural Slim Line	15" / 40 lbs.	1M/Bag	10335
TY244MX	14.5"	Black HS Slim Line	15" / 40 lbs.	1M/Bag	10336
TY253M	11.4" 11.4"	Natural Natural (Ladder)	11" / 50 lbs. 11" / 50 lbs.	1M/Bag 1M/Bag	08600 08471
TY253MX	11.4"	Black WR	11" / 50 lbs.	1M/Bag	08286
TY523M	3.6"	Natural	4" / 18 lbs.	100/Bag	08434
TY523MX	3.6"	Black WR	4" / 18 lbs.	100/Bag	08435
TY524M	30 lbs.	Natural	5.5" / 40 lbs.	100/Bag	08383
TY524MX	30 lbs.	Black WR	5.5" / 40 lbs.	100/Bag	08384
TY525M	7.3" 7.3" 7.3"	Natural Natural (Super BL) Natural (Ladder)	7.5" / 50 lbs. 7.5" / 50 lbs. 7" / 40 lbs.	100/Bag 100/Bag 100/Bag	08436 10004 08476
TY525MX	7.3"	Black WR	7.5" / 50 lbs.	100/Bag	08437
TY526M	11.1"	Natural (Ladder)	11" / 40 lbs.	100/Bag	08477
TY527M	13.4"	Natural	14.5" / 120 lbs.	50/Bag	08378
TY527MX	13.4"	Black WR	14.5" / 120 lbs.	50/Bag	08382

WORLD WIDE LOCATIONS

AVERY DENNISON FASTENER SOLUTIONS

USA & CANADA

Avery Dennison
224 Industrial Road
Fitchburg, MA 1420
USA
Tel. 800-225-5913
Tel. 978-345-8100
Fax. 800-848-2169
Email fastener@averydennison.com

ASIA

Avery Dennison
No. 7 Chun Ying Street
Tseung Kwan O Industrial Estate
New Territories
Hong Kong
Tel. 852-2372-3000
Fax. 852-2873-6436

EUROPE, MIDDLE EAST & AFRICA

Avery Dennison
1 Thomas Road
Wooburn Green
Bucks. HP10 0PE
UK
Tel. +44 1628-859-500
Fax. +44 1628-859-567

LATIN AMERICA

Avery Dennison
Aristóteles #123
Parque Industrial Kalos
Apodaca, Nuevo León
66600 México
Tel. +52 (81) 8864 4100
Fax. + 52 (81) 8864 4101

© 2018 Avery Dennison Corporation all rights reserved. Avery Dennison and all Avery Dennison brands and product names are the trademarks of Avery Dennison Corporation

Item numbers, descriptions and availability subject to change. Please check out website for current updates.

fastener@averydennison.com 

automotive.averydennison.com
Automotive

fastener.averydennison.com
Cable Tie Fasteners

The information contained herein is believed to be reliable but Avery Dennison makes no representations concerning the accuracy or correctness of the data. This product, like any other should be tested by the customer/user thoroughly under end user conditions to ensure the product meets the particular requirements. Independent results may vary. Avery Dennison shall have no liability whatsoever, regardless of any legal theory, arising out of your use or reliance on the information contained herein.

Avery Dennison and the logo are registered trademarks of Avery Dennison Corp. Third party trademarks and/or trade names used herein are the property of their respective owner(s).
© 2018 Avery Dennison Corporation, All Rights Reserved.