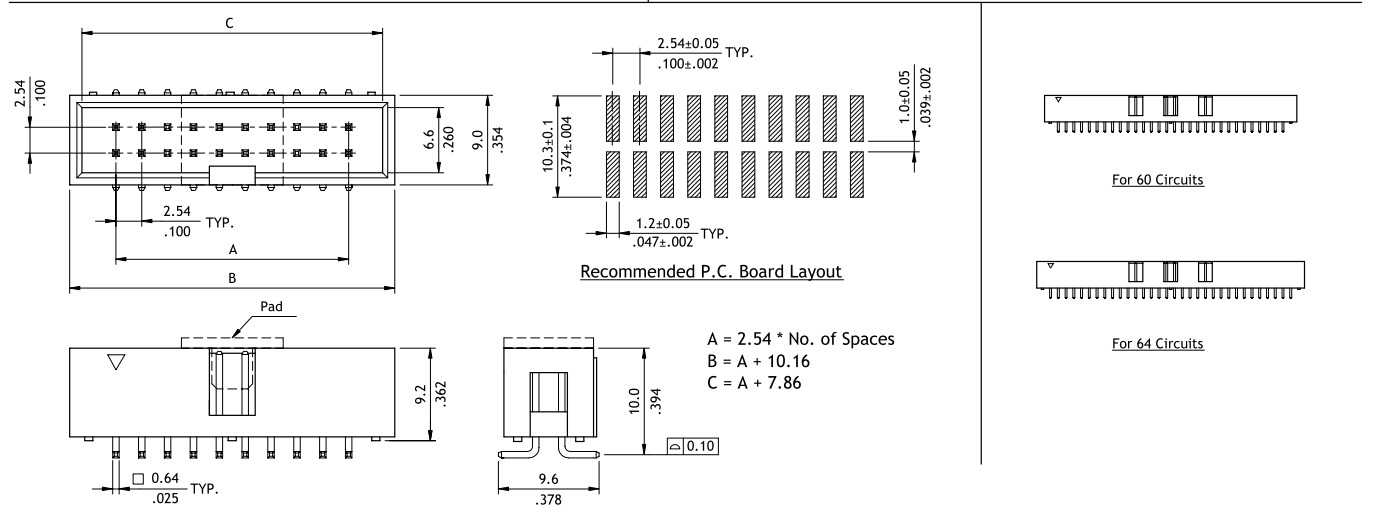
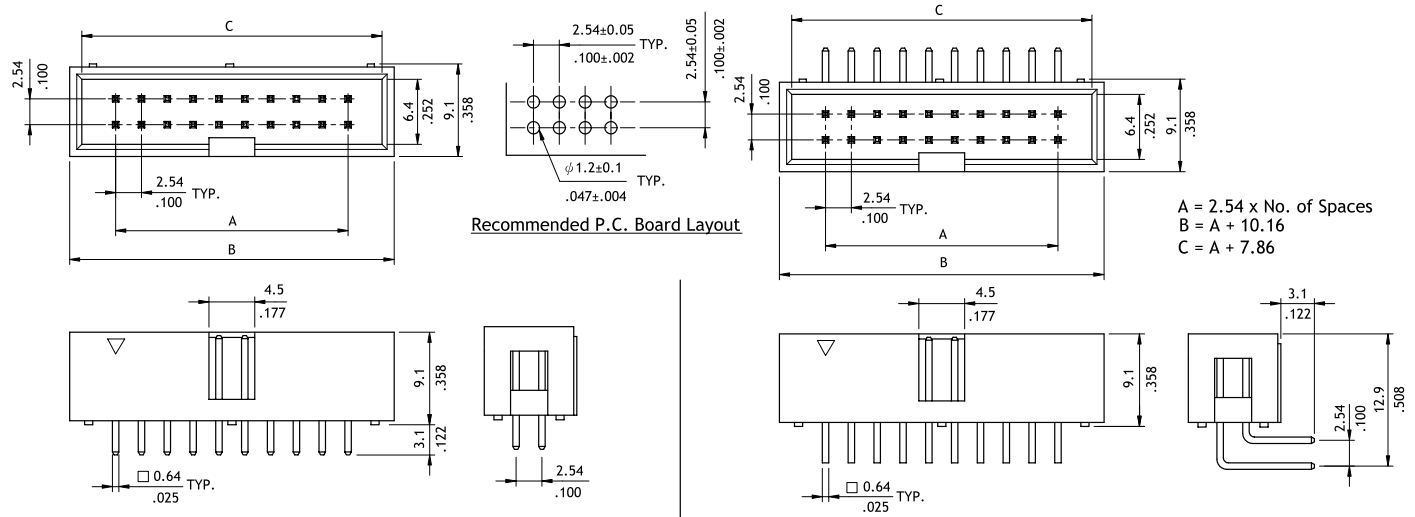
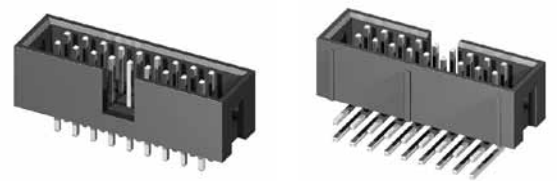


CH87 Series 2.54mm(.100") Dual Row Pin Headers

- ⊙ With polarizing slot
- ⊙ Mates with CB94, CA21 series



Ordering Code

①
②
③
④
⑤
⑥

C H 8 7
6 4
2
V
1
0 0

- ① Series No.
- ② Circuits: DIP type
(Available circuits: 8,10,14,16,20,24, 26,30,34,40,44, 50,60 and 64)
SMT type:(06,08, 10,14,16,20,24,26 ,30,34 and 40)
- ③ Plating code:
2= Gold flash over Nickel
- ④ Tail Style:
V= Straight DIP Type
H= Right Angle DIP Type
M= Straight SMT type
- ⑤ Insulator Material & Color:
2= PBT UL 94V-0 , Color Black (DIP)
A= Nylon 6T UL 94V-0 , Color Black (DIP)
1= Nylon 6T UL94V-0 , Color Black (SMT)
- ⑥ Other options:
00= Standard (DIP)
00= Without Pad (SMT)
P0= With Pad (SMT)
*Special options Consult manufacturer

CH

BOARD TO BOARD