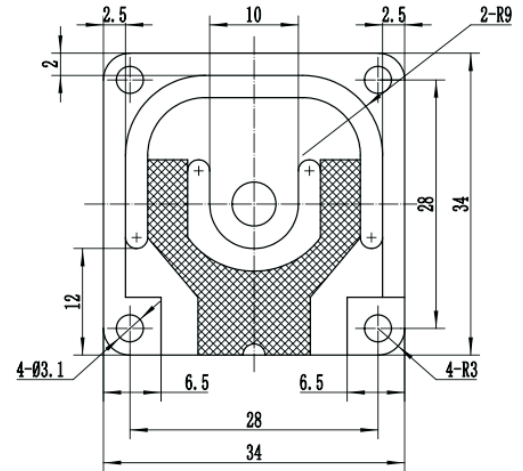
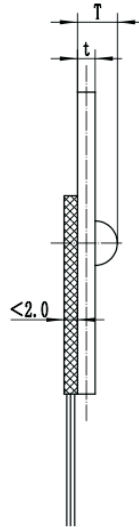
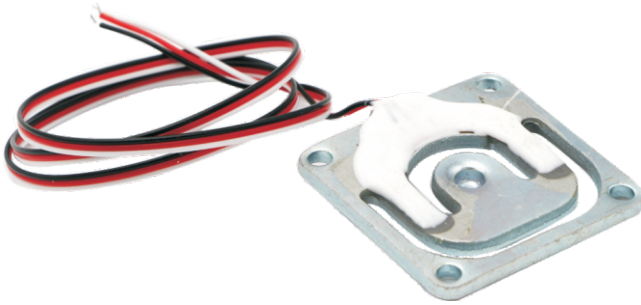


## Micro Load Cell GML670A

Installation size (mm): 34x34\*1.5/2.0/2.5



Range : 10kg    t : 1.5mm , T : 3.5 ± 0.2mm  
 Range : 30kg    t : 2.0mm , T : 4.0 ± 0.2mm  
 Range : 50kg    t : 2.5mm , T : 4.5 ± 0.2mm  
 Range : 75kg    t : 2.5mm , T : 4.5 ± 0.2mm

### Features

- Material : manganese steel, surface anodic oxidation treatment;
- High precision, half bridge or full bridge ;
- Application : body scale, kitchen scale and other miniature electronic weighing equipment.

### PARAMETERS

Rated capacity	10,30,50,75kg	Input resistance	1000±10Ω
Rated output full bridge	2.0±0.15mV/V (30-50kg)	Output resistance	1000±10Ω
	1.0±0.15mV/V (10kg)	Temp. effect on span	0.05% F.S/10°C
Rated output half bridge	1.0±0.15mV/V (30-50kg)	Temp. effect on zero	0.1% F.S/10°C
	0.5±0.15mV/V (10kg)	Excitation voltage	3 ~ 10VDC
Comprehensive error	0.05% F.S	Compensated temp. range	-10 ~ +40°C
Non-linearity	0.05% F.S	Safe overload	120% F.S
Repeatability	0.05% F.S	Ultimate overload	150% F.S
Hysteresis error	0.05% F.S	Defend grade	IP65
Creep	0.05% F.S/3min	Cable	Three or Four color PVC wires
Zero output	±0.3mV/V	Cable length	φ0.8*200-400mm
Insulation resistance	≥2000MΩ		