

Terminal Blocks - T series

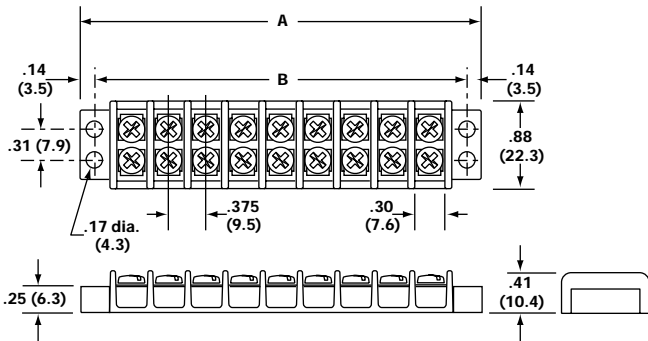
Heavy-duty , corrosion-resistant screws, surface plates and optional hardware
 Accessory hardware provides a variety of termination options.
 Available cover helps prevent contact with live terminals

Order Codes:

| Series | Poles | Screw Options | Marking | Cover | Hardware Options |
|--------|----------|---|----------|-------|--|
| TU1 | 02 to 22 | Blank - steel phillslot, zinc plated 00 - screws shipped bulk B - brass phillslot, nickel plated BS - brass Sems phillslot, nickel plated SP - steel Sems phillslot, zinc plated P - steel Sems (P-style) ST - stainless steel, phillslot STR - stainless steel, phillips (recess) | L1 to L9 | C | Q1 to Q9 - quick connects J1 to J9 - jumper |

TU100/TG100 Series Terminal Strips 15A/300V

- 9.5mm center spacing
- Accepts wire sizes from 22 through 14 AWG Cu
- #6-32 phillslot, zinc-plated steel terminal screws (Recommended torque: 9 in. - lb.)
- Molded of materials maximum temperature rating
 TG: thermoplastic (UL Rated 94V-0) 130 C
 TU: Phenolic 150 C

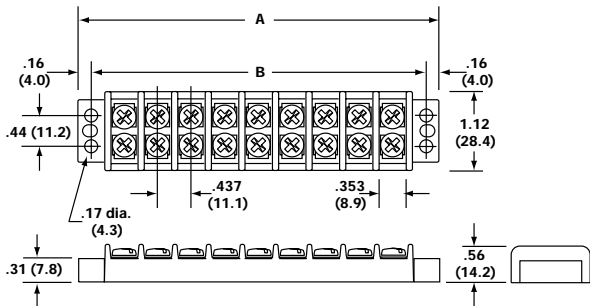


| Poles | A | B | Cat. No. | Poles | A | B | Cat. No. |
|-------|------|------|----------|-------|------|------|----------|
| 02 | 1.40 | 1.12 | TU/TG102 | 13 | 5.53 | 5.25 | TU113 |
| 03 | 1.78 | 1.50 | TU103 | 14 | 5.90 | 5.62 | TU/TG114 |
| 04 | 2.16 | 1.88 | TU/TG104 | 15 | 6.28 | 6.00 | TU115 |
| 05 | 2.53 | 2.25 | TU105 | 16 | 6.66 | 6.38 | TU/TG116 |
| 06 | 2.90 | 2.62 | TU/TG106 | 17 | 7.03 | 6.75 | TU117 |
| 07 | 3.28 | 3.00 | TU107 | 18 | 7.40 | 7.12 | TU/TG118 |
| 08 | 3.66 | 3.38 | TU/TG108 | 19 | 7.78 | 7.50 | TU119 |
| 09 | 4.03 | 3.75 | TU109 | 20 | 8.16 | 7.88 | TU/TG120 |
| 10 | 4.40 | 4.12 | TU/TG110 | 21 | 8.53 | 8.25 | TU121 |
| 11 | 4.78 | 4.50 | TU111 | 22 | 8.90 | 8.62 | TU/TG122 |
| 12 | 5.16 | 4.88 | TU/TG112 | | | | |

* Dimensions in inches. To convert to millimeters, multiply by 25.4.

TU200/TG200 Series Terminal Blocks 20A/300V

- 11.1mm center spacing
- Accepts wire sizes from 22 through 12 AWG Cu
- #6-32 phillslot, zinc-plated steel terminal screws (Recommended torque: 9 in. - lb.)
- Molded of materials maximum temperature rating
 TG: thermoplastic (UL Rated 94V-0) 130 C
 TU: Phenolic 150 C



| Poles | A | B | Cat. No. | Poles | A | B | Cat. No. |
|-------|------|------|----------|-------|-------|-------|----------|
| 02 | 1.63 | 1.31 | TU/TG202 | 13 | 6.44 | 6.12 | TU213 |
| 03 | 2.07 | 1.75 | TU203 | 14 | 6.87 | 6.56 | TU/TG214 |
| 04 | 2.51 | 2.18 | TU/TG204 | 15 | 7.31 | 7.00 | TU215 |
| 05 | 2.94 | 2.62 | TU205 | 16 | 7.75 | 7.43 | TU/TG216 |
| 06 | 3.38 | 3.06 | TU/TG206 | 17 | 8.19 | 7.87 | TU217 |
| 07 | 3.82 | 3.50 | TU207 | 18 | 8.62 | 8.31 | TU/TG218 |
| 08 | 4.25 | 3.93 | TU/TG208 | 19 | 9.06 | 8.75 | TU219 |
| 09 | 4.69 | 4.37 | TU209 | 20 | 9.50 | 9.18 | TU/TG220 |
| 10 | 5.13 | 4.81 | TU/TG210 | 21 | 9.94 | 9.62 | TU221 |
| 11 | 5.57 | 5.25 | TU211 | 22 | 10.37 | 10.06 | TU/TG222 |
| 12 | 6.00 | 5.68 | TU/TG212 | | | | |

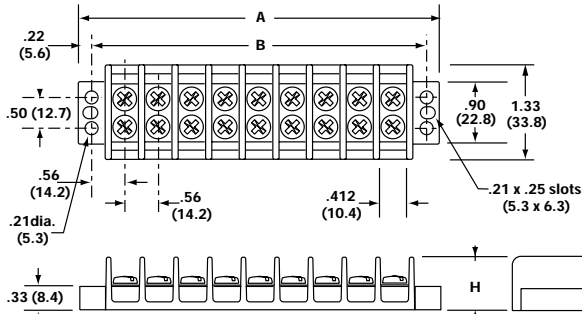
* Dimensions in inches. To convert to millimeters, multiply by 25.4.

TU300 (30A/300V)/ TG300 (30A/600V) Series Terminal Strips



- 14.2mm center spacing
- Accepts wire sizes from 22 through 10 AWG Cu
- #8-32 philslot, zinc-plated steel terminal screws (Recommended torque: 16 in. - lb.)
- Molded of materials maximum temperature rating
 TG: thermoplastic (UL Rated 94V-0) 130 C
 TU: Phenolic 150 C

Inches (mm)

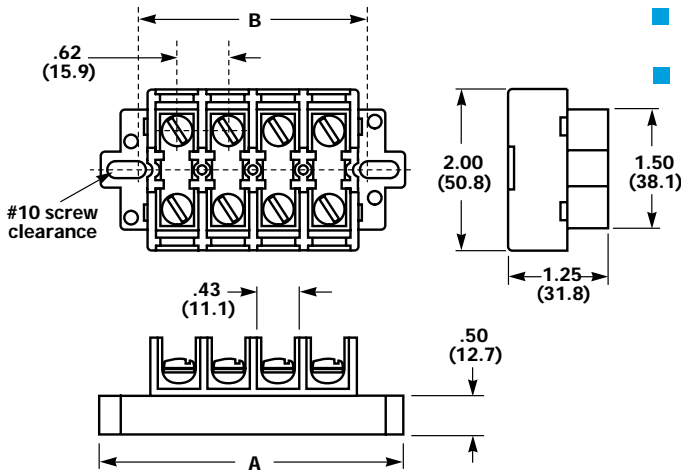


| Poles | A | B | Cat. No. | Poles | A | B | Cat. No. |
|-------|------|------|----------|-------|-------|-------|----------|
| 02 | 2.13 | 1.69 | TU/TG302 | 13 | 8.31 | 7.87 | TU313 |
| 03 | 2.69 | 2.25 | TU303 | 14 | 8.87 | 8.44 | TU/TG314 |
| 04 | 3.25 | 2.81 | TU/TG304 | 15 | 9.43 | 9.00 | TU315 |
| 05 | 3.81 | 3.37 | TU305 | 16 | 9.99 | 9.56 | TU/TG316 |
| 06 | 4.37 | 3.94 | TU/TG306 | 17 | 10.56 | 10.12 | TU317 |
| 07 | 4.94 | 4.50 | TU307 | 18 | 11.12 | 10.68 | TU/TG318 |
| 08 | 5.50 | 5.06 | TU/TG308 | 19 | 11.68 | 11.25 | TU319 |
| 09 | 6.06 | 5.62 | TU309 | 20 | 12.24 | 11.81 | TU/TG320 |
| 10 | 6.62 | 6.19 | TU/TG310 | 21 | 12.80 | 12.37 | TU321 |
| 11 | 7.18 | 6.75 | TU311 | 22 | 13.37 | 12.93 | TU/TG322 |
| 12 | 7.75 | 7.31 | TU/TG312 | | | | |

* Dimensions in inches. To convert to millimeters, multiply by 25.4.

* For TU-2XX: H = 0.69 inch (17.5mm)
 For TG-2XX: H = 0.81 inch (20.5mm)

TG600 Series Terminal Blocks 60A/600V



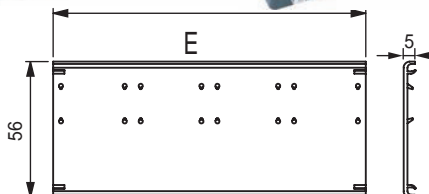
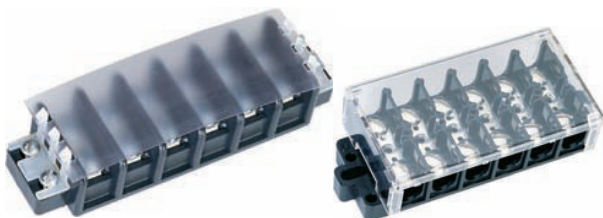
- 15.88mm center spacing
- Accepts wire sizes from 22 through 6 AWG Cu
- #10-32 philslot, zinc-plated steel terminal screws (Recommended torque: 20 in. - lb.)
- Molded of materials maximum temperature rating 105 C thermoplastic (UL Rated 94V-0)

| Poles | A | B | Cat. No. |
|-------|------|------|----------|
| 02 | 2.50 | 1.62 | TG602 |
| 04 | 3.75 | 2.87 | TG604 |
| 06 | 5.00 | 4.12 | TG606 |
| 08 | 6.25 | 5.37 | TG608 |
| 10 | 7.50 | 6.62 | TG610 |
| 12 | 8.75 | 7.87 | TG612 |

* Dimensions in inches. To convert to millimeters, multiply by 25.4.
 * 60A rating achieved with #6 copper wire crimped to ring terminal.

Accessories

Covers



- Helps prevent contact with live terminals

| No. of Circuits | For Use With Terminal Strip Series | | | |
|-----------------|------------------------------------|-----------------------|-----------------------|-----------------------|
| | TG-100 Clear Cat. No. | TG-200 Clear Cat. No. | TG-300 Clear Cat. No. | TG-600 Clear Cat. No. |
| 2 | TG1C2 | TG2C2 | TG3C2 | — |
| 4 | TG1C4 | TG2C4 | TG3C4 | TG6C4 |
| 6 | TG1C6 | TG2C6 | TG3C6 | TG6C6 |
| 8 | TG1C8 | TG2C8 | TG3C8 | TG6C8 |
| 10 | TG1C10 | TG2C10 | TG3C10 | TG6C10 |
| 12 | TG1C12 | TG2C12 | TG3C12 | TG6C12 |

Terminal Block

Accessories

Quick Connects

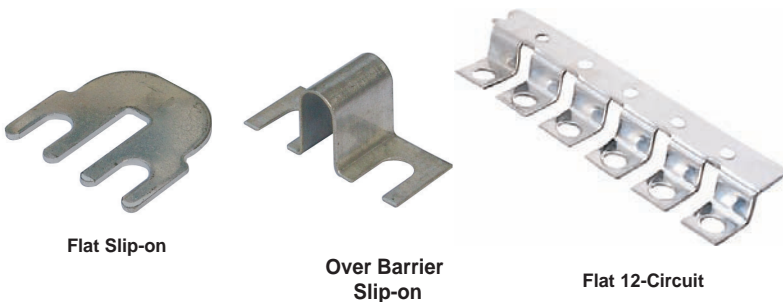


Allows fast, flexible circuit changes

| For Use With | | | |
|-----------------------|-------------------|---------------------|----------------------|
| Terminal Strip Series | Tab Size (Inches) | Flat - Non Cat. No. | Flat - Flat Cat. No. |
| TG100 | .187 x .020 | TG1Q1 | TG1Q2 |
| TG200 TG300 | .250 x .031 | TG3Q1 | TG3Q2 |

Jumpers

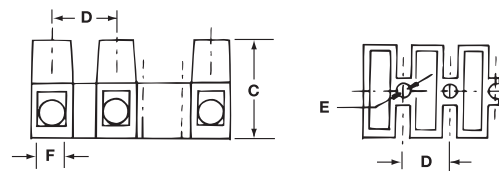
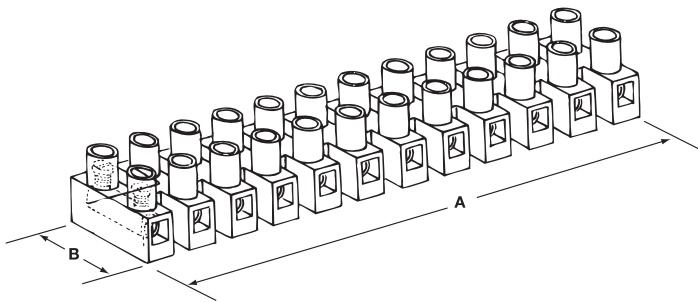
■ Provides easy connection of multiple circuits



| For Use With Terminal Strip Series | Center Spacing (Inches) | Flat Slip-on Cat. No. | Over Barrier Slip-on Cat. No. | Flat 12-Circuit Cat. No. |
|------------------------------------|-------------------------|-----------------------|-------------------------------|--------------------------|
| TG100 | .375 | TG1J2 | TG1J1 | — |
| TG200 | .437 | TG2J2 | TG2J1 | — |
| TG300 | .562 | TG3J2 | TG3J1 | — |
| TG600 | .625 | | | TG6J6 |

TH Series Terminal Block

- Modular 12-circuit design can be cut into smaller sections, or stacked end-to-end
- Rugged nylon construction, UL 94V2
- Insulation Material temperature rating 105°C (221°F)



| Electrical Ratings | Wire Range (AWG) | No. of Circuits | Torque in.-lb. | Dimensions (Inches) | | | | | | Dimensions (mm) | | | | | | Cat. No. |
|--------------------|------------------|-----------------|----------------|---------------------|-------|-------|-------|-------|-------|-----------------|------|------|------|-----|-----|----------|
| | | | | A | B | C | D | E | F* | A | B | C | D | E | F** | |
| 20A/300V | 22 - 18 | 12 | 3.5 | 3.787 | 0.669 | 0.570 | 0.315 | 0.114 | 0.110 | 96.2 | 17.0 | 14.5 | 8.0 | 2.9 | 2.8 | TH-1012 |
| 30A/300V | 22 - 14 | 12 | 4.4 | 4.626 | 0.795 | 0.670 | 0.394 | 0.142 | 0.134 | 117.0 | 20.2 | 17.0 | 10.0 | 3.6 | 3.4 | TH-2012 |
| 35A/300V | 22 - 10 | 12 | 7.0 | 5.540 | 0.937 | 0.748 | 0.472 | 0.154 | 0.154 | 140.7 | 23.8 | 19.0 | 12.0 | 3.9 | 3.9 | TH-3512 |
| 50A/300V | 20 - 8 | 12 | 12.0 | 6.220 | 1.008 | 0.992 | 0.531 | 0.173 | 0.189 | 158.0 | 25.6 | 25.2 | 13.5 | 4.4 | 4.8 | TH-5012 |