

Specifications

備注(Remark)

1. 材料(Material)

膠芯:PA9T/LCP+30%G.F UL94V-0, 顏色:黑色

Housing:PA9T/LCP+30%G.F UL94V-0, Color:Black

端子:黃銅

Contact:Brass

2. 特性(characteristics):

額定電流:3.00AMP

Rating Current:3.00AMP

接觸阻抗:20mΩ Max

Contact Resistance:20mΩ Max

絕緣阻抗:1000MΩ Min

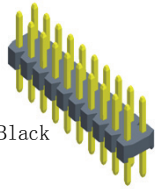
Insulating Resistance:1000 MΩ Min

耐電壓: AC 500V/分钟

Withstanding Voltage:AC 500V/Minute

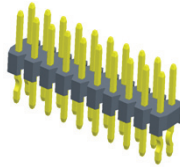
溫度範圍: -40° C to+105° C

Temperature Range: -40° C to+105° C



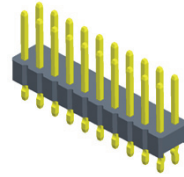
P1XX-12XXXXXSXXX1

L=A+B+H



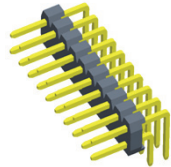
P125-12XXXXXSXXX2

L=A+B+H



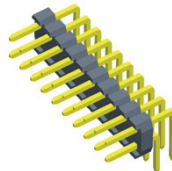
P125-12XXXXXCXXX1

L=A+B+2.5



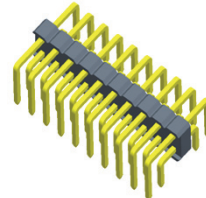
P1XX-12XXXXRXXXX1

L=A+B+D+H+1.23



P1XX-12XXXXRXXX2

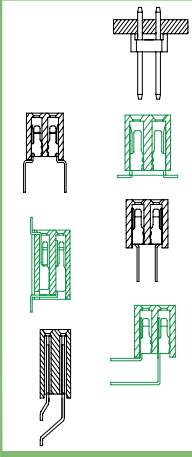
L=A+B+D+H+1.23



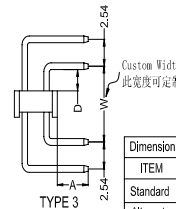
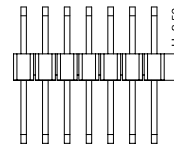
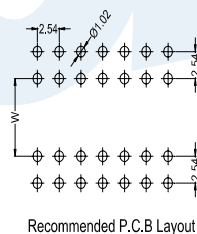
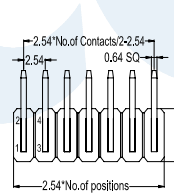
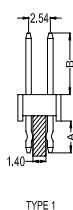
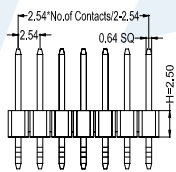
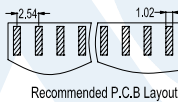
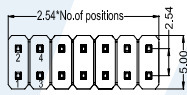
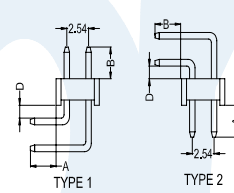
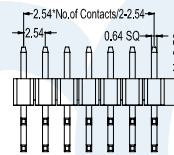
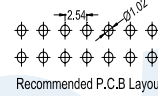
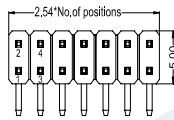
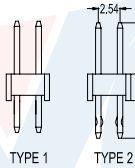
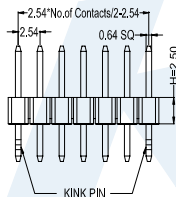
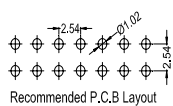
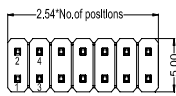
P125-12XXXXRXXX3

L=2A+2D+H+2.5

Mating With/配對母座:
F135/F136/F145/F150/F157/F160
F168/F169/F170/F171/F175/F184
F185/F186/F111



Dimension anitheses list			
ITEM	A	B	H
Standard	3.0	3.0/4.0/5.0/6.0	1.0 1.7 2.5 3.0
Alternate			1.5 2.0 2.8



Dimension anitheses list			
ITEM	A	B	H
Standard	3.0	3.0/4.0/5.0/6.0	1.0 1.7 2.5 3.0
Alternate			1.5 2.0 2.8

Dimension anitheses list				
ITEM	A	D	W	H
Standard	3.6	1.2	5.5	1.0 1.7 2.5 3.0
Alternate				1.5 2.0 2.8

PIN HEADER

- P 110 - 12
- P 115 - 12
- P 117 - 12
- P 120 - 12
- P 125 - 12
- P 128 - 12
- P 130 - 12

XX

No.Of Pins
Per Row
02~40P

XX

Contact Plating
Full Of Gold Semi-Gold
A0=0.8u" B0=0.8u"
~
A9=30u" B9=30u"
S1=Ordinary Tin Plated
S2=Matte Tin Plated
S3=Tin-plated High-temperature

X

Insulator Material:
A:PBT
B:PA6T
C:PA9T
D:LCP

X

Contact Shape:
S:Straight
R:Right Angle
C:K Feet/Splint

XXX

Length Of Terminal

X

Packing
A:PE Bag
B:Tape & Reel
C:Tube
D:Tube+CAP
E:Tray

X

Journal Number
1:Type1
2:Type2
3:Type3