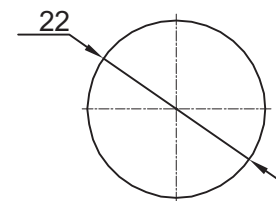
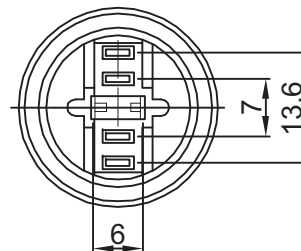


SWITCH SPECIFICATION

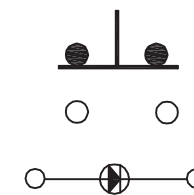
Circuit	:SPDT
Current rating	:5A
Voltage rating	:250VAC
Dielectric withstanding voltage	:2000VAC for 1 minute
Contact resistance	:50mΩ Max. (Initial)
Insulation resistance	:1000MΩ Min.
Operating life	:200,000 cycles Min.
Operating temperature	:-20°C ~ +70°C

MATERIAL:

Actuator: SUS;
Top Base: SUS;
Bottom Base:PBT, UL rated:94V-0 Min. ;
Terminal: Brass,Silver or Gold plated ;
Nut: Brass, Ni plated .



PANEL MOUNTING



Circuit Diagram

REVISION	DESCRIPTION	REVISED BY	TOLEANCES .X± .XX±	ANGLE ½°	UNIT	mm	PART NAME	PBM SPEC DRAWING	DWG NO
④			DRAWN BY	Jelly	DESIGNED BY	蔡劍	SCALE		
③			CHECKED BY		APPROVED BY		DATE	2012. 05. 10	PART NO
②									
①	2012. 05. 10 換新圖框, 重新出圖	Jelly						PBM22-12M-FS-R##-SN-S	WS1844A