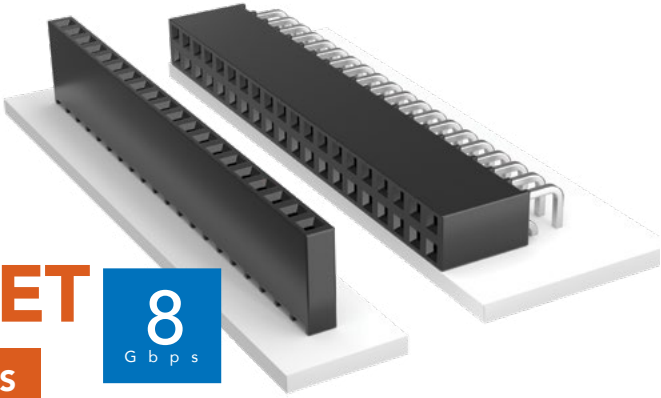




THROUGH-HOLE .025" SQ POST SOCKET

(2.54 mm) .100" PITCH • A-SSW/A-SSQ SERIES



A-SSW/A-SSQ

Mates:
A-TSW, A-MTSW,
A-TSS, A-HTSS,
A-ZSS, A-TSM



SERIES	1	NO. PINS PER ROW	LEAD STYLE	PLATING OPTION	ROW OPTION	TAIL OPTION
A-SSW		01 thru 50	Specify LEAD STYLE from chart	-L = 10 μ" (0.25 μm) Gold on contact, Matte Tin on tail	-S = Single Row	Leave blank for straight pin version
A-SSQ				-T = Matte Tin (-T N/A on LIF contacts)	-D = Double Row	-RA = Right-angle (-S & -D only)
					-T = Triple Row	

SPECIFICATIONS

Insulator Material:
Black Liquid Crystal Polymer
(-S & -D) or
Black High Temperature
Thermoplastic (-T)

Contact Material:
Phosphor Bronze

Plating:
Au or Sn over
50 μ" (1.27 μm) Ni

Current Rating
(A-SSW/A-TSM):

4.7 A per pin
(2 pins powered)

Current Rating
(A-SSQ/A-TSW):

6.3 A per pin
(2 pins powered)

Operating Temp Range:
-55 °C to +125 °C with Gold
-55 °C to +105 °C with Tin

Insertion Depth:

(3.68 mm) .145" to

(6.35 mm) .250"

Normal Force:

Standard= 125 grams (4.4 N)

Max Cycles:

100 with 10 μ" (0.25 μm) Au

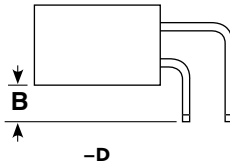
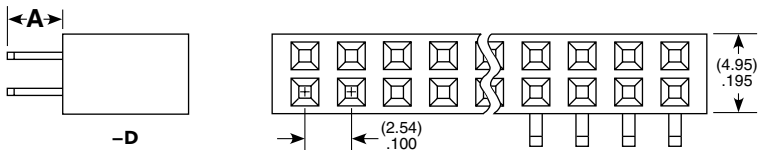
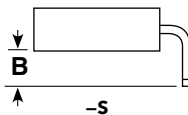
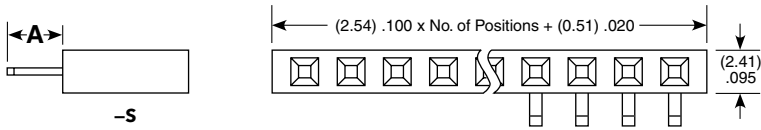
Voltage Rating:

465 VAC / 655 VDC

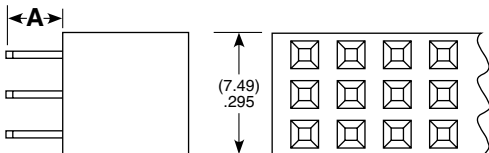
THROUGH-HOLE		
LEAD STYLE		SINGLE DOUBLE OR TRIPLE A
Standard Insertion Force	Low Insertion Force*	
-01	-21	(2.64) .104
-02	-22	(4.93) .194
-03	-23	(10.00) .394
-04	-24	(14.83) .584
-06**	N/A	(3.15) .124

* LIF not available with Tin Plating

**Style -06 Not available with SSQ



Right-Angle



Through-hole

RIGHT-ANGLE			
LEAD STYLE		SINGLE	DOUBLE
Standard Insertion Force	Low Insertion Force*	(-S) B	(-D) B
-02	-22	(2.54) .100	(2.54) .100
-03	-23	(7.62) .300	(7.62) .300
-04	-24	(12.45) .490	N/A

*LIF not available with Tin Plating

Note:

Some lengths, styles and
options are non-standard,
non-returnable.

Due to technical progress, all designs, specifications and components are subject to change without notice.