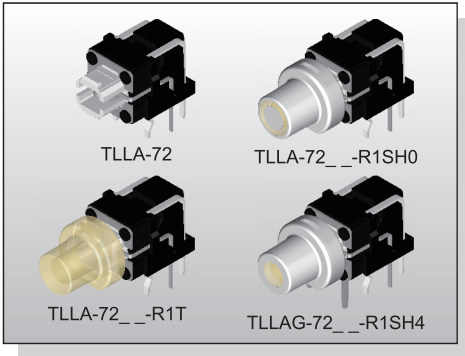


ILLUMINATED SWITCH TLLA-7 SERIES

Tact Switch
Illuminated



FEATURES

- ✘ Horizontal operation
- ✘ Various LED colors
- ✘ Options of different cap color & mark

APPLICATION

- ✘ Automotive
- ✘ Server
- ✘ Laptop, IPC

SPECIFICATION

Contact Rating	50mA, 12V DC
Contact Resistance	100mΩ max.
Insulation Resistance	100MΩ min. 500V DC
Dielectric Strength	250V AC/1 minute
Operating Force	160±50gf
Travel	0.2±0.1mm
Operating Life	500,000 cycles
Operating Temp.	-40°C ~ +85°C
Storage Temp.	-40°C ~ +85°C

HOW TO ORDER

T L A - 7

Tact Switch

L=Tact+LED
□=Without LED

Right Angle Type

G=With Ground Pins
□=Without Ground Pins

Operating Force:
1=100g 2=160gf 3=260g

LED Specification
B or □=Without LED

LED Color :
□=Without LED
R=Red, G=Green, B=Blue, Y=Yellow, W=White, PG=Pure Green
AW=Amber\White, AG=Amber\Green, APG=Amber\Pure Green
RG=Red\Yellow Green, RB=Red\Blue, GY=Green\Yellow

Package:
B=Tube A=Tray

V=RoHS & Lead Free Solderable
Q=Halogen Free (Without Cap)

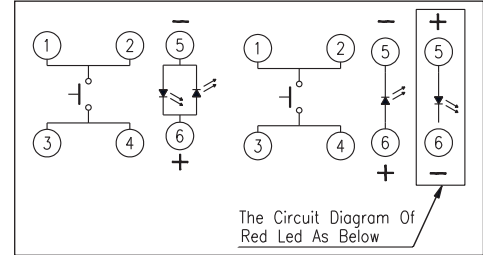
CAP Mark (See note behind)
(EX:H0=0) □=Standard

CAP Color :
K=Black, S=Silver, T=Transparent

CAP Type □=Without Cap
R1=6.5mm R2=8.0mm

Contact Plating:
□=Ag Plating A3=Au Plating

CIRCUIT



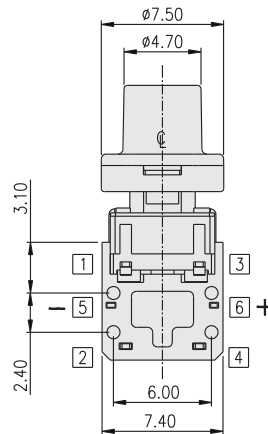
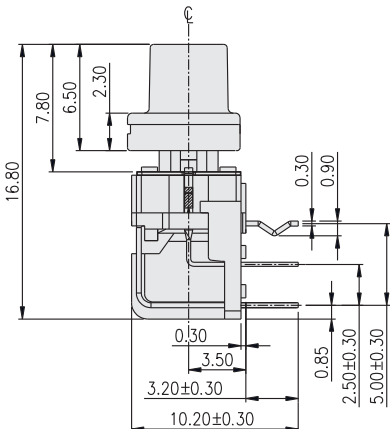
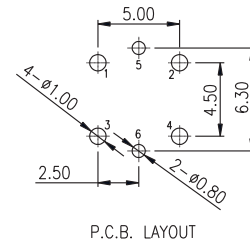
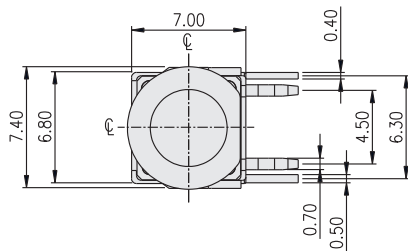
PACKAGE

<Tray>
TLLA-7□-A: 100 pcs.
<Tube>
TLLA-7□-B: 64 pcs.

CAP MARK

	0	1	2	3	4	5	6	7	8	9
H	○	⦿	Ⓢ	Ⓣ	●			⦿		

TLLA-72□□-R1KH1



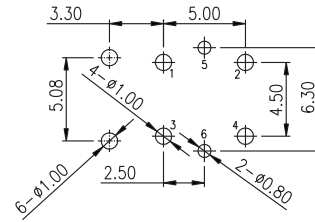
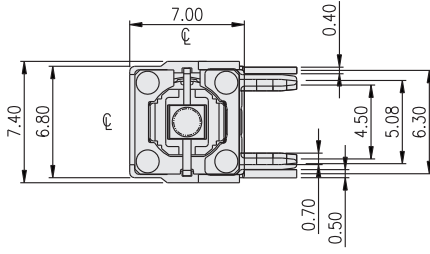
ILLUMINATED SWITCH
TLLA-7 SERIES

Tact Switch
 Illuminated

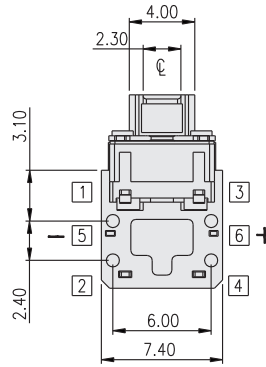
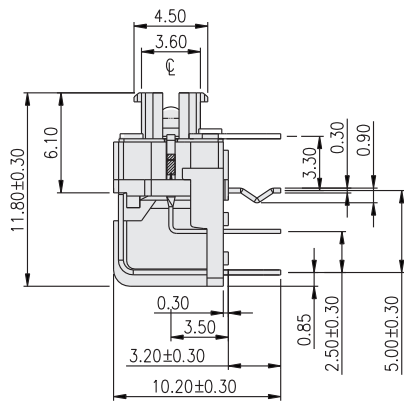


ILLUMINATED SWITCH

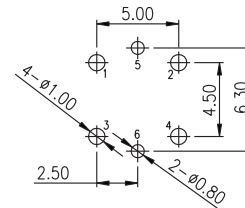
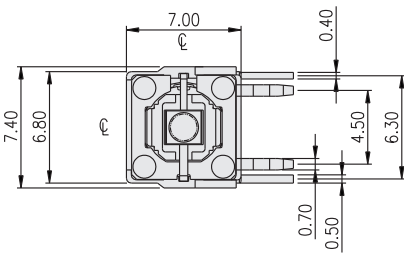
TLLAG-7



P.C.B. LAYOUT



TLLA-72



P.C.B. LAYOUT

