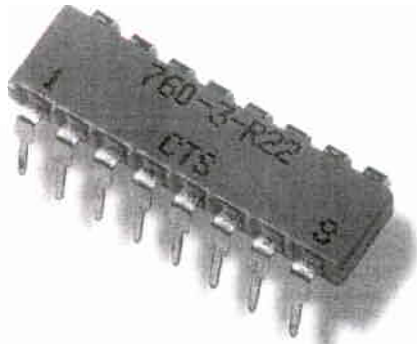


Dual-In-Line Series 76



60% Greater Surface Area Available For Resistor Circuitry With CTS Products

- Solid ceramic substrate
- Low height profile
- .100" lead spacing
- High overload capabilities
- 8, 14, 16 and 18 pin constructions
- Compatible with automatic insertion equipment
- High power capabilities

Resistance Range:

Standard: 10Ω to 1 MegΩ

Special: below 10Ω and above 1 MegΩ

Resistance Tolerance:

Standard: ±2% or 0.5Ω

Special: ±0.25%, or 0.25Ω (whichever is greater)

Maximum Operating Voltage:

100V not to exceed rated power

Temperature Coefficient:

Standard: 100Ω to 1 MegΩ

±100PPM/°C typical

10Ω to 99Ω

±200PPM/°C typical

Tracking: Available to 50PPM/°C with same formulation and on same side of substrate.

Operating Temperature Range

-55°C to +125°C

Dielectric Strength

200 VAC

Resistance Matching (2 like resistors):

Special: 50Ω to 100KΩ: 0.5% or 0.5Ω

(whichever is greater)

100KΩ to 500KΩ: 1%

500KΩ to 1 MegΩ: ±2.5%

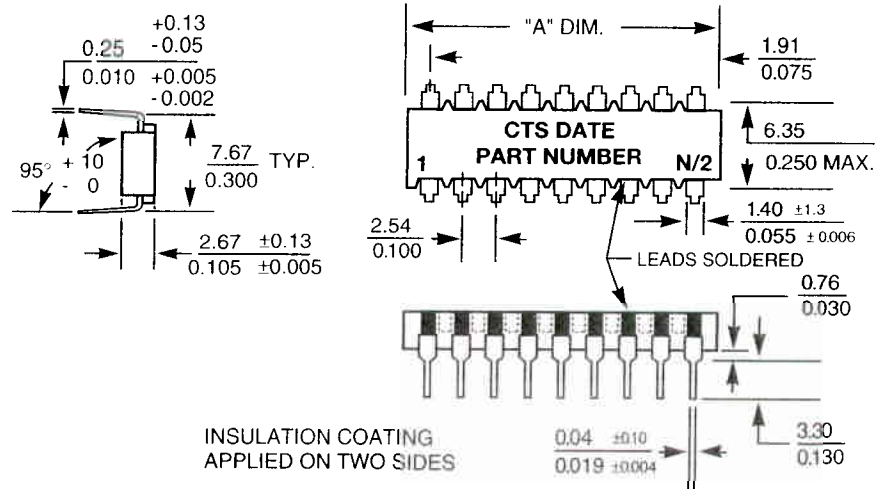
Ratio Matching:

Special: 50Ω to 100Ω: ±1.0%

100Ω to 100KΩ: ±0.5%

100KΩ to 1 MegΩ: ±2%

Multiple ratio matching available upon engineering approval.



NOTES:

1. General Tolerances mm ±0.25
inch ±0.010
2. Dimensions are mm/in.

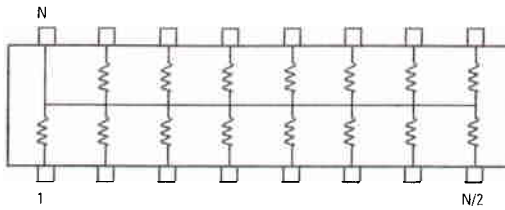
| Number Pins | "A" Dimension ±0.25/0.010 | Package Power @25°C | Package Power @70°C |
|-------------|------------------------------|-------------------------|-------------------------|
| 8 | 11.43/0.450 | 1.8 W | 1.2 W |
| 14 | 19.05/0.750 | 3.0 W | 2.0 W |
| 16 | 21.59/0.850 | 3.4 W | 2.3 W |
| 18 | 24.13/0.950 | 3.7 W | 2.5 W |
| Schematic | | Resistor Power @25°C | Resistor Power @70°C |
| 1, 5, 7 | | 0.22 W | 0.15 W |
| 3 | | 0.45 W | 0.30 W |

| | |
|--|-------------|
| Application Notes | pages 32-33 |
| Power Derating | page 45 |
| Land Patterns | pages 46-47 |
| Packaging | pages 48-49 |
| Environmental Performance Specifications | pages 50-51 |

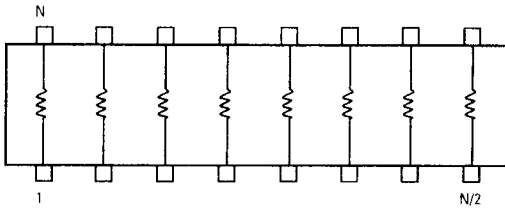
CTS

CTS Resistor Products • 406 Parr Road • Berne, IN • 46711 • fax: (219)589-3243 • www.ctscorp.com

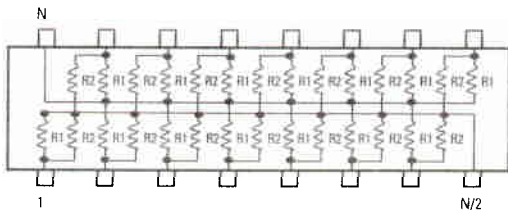
Bussed CTS Schematic 1



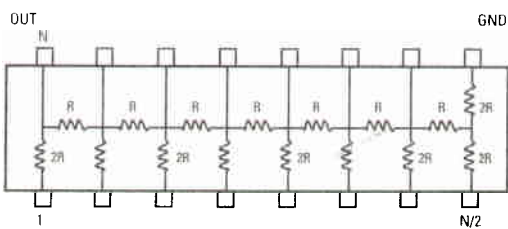
Isolated CTS Schematic 3



Dual Terminator CTS Schematic 5



R/2R Ladder CTS Schematic 7



| (Ohms) | (Ohms) |
|--------|---------|
| 10 | 2700 |
| 12 | 3300 |
| 15 | 3900 |
| 18 | 4700 |
| 22 | 5100 |
| 27 | 5600 |
| 33 | 6800 |
| 39 | 8200 |
| 47 | 10000 |
| 51 | 11000 |
| 56 | 12000 |
| 68 | 15000 |
| 82 | 18000 |
| 100 | 22000 |
| 110 | 27000 |
| 120 | 33000 |
| 150 | 39000 |
| 180 | 47000 |
| 200 | 56000 |
| 220 | 68000 |
| 270 | 82000 |
| 330 | 100000 |
| 390 | 110000 |
| 470 | 120000 |
| 510 | 150000 |
| 560 | 180000 |
| 680 | 220000 |
| 820 | 270000 |
| 1000 | 330000 |
| 1100 | 390000 |
| 1200 | 470000 |
| 1500 | 560000 |
| 1800 | 680000 |
| 2000 | 820000 |
| 2200 | 1000000 |

How to Order Series 760/761 Standard Products

Application specific custom products are marked with either a customer part number or a non-descriptive CTS part number. Send documentation to a CTS Sales Office giving schematic, resistor values and tolerance, and other non-standard information. See page 32-33 for application notes.

760 3 R 4.7K

Series 760 - 14 Pin
Series 761 - 16 Pin

Prefix

Schematic 1 Bussed
3 Isolated
5 Dual Terminator
7 Ladder

Resistance Value Schematic 1, 3, 7
Resistance Value Schematic 5
Example 220/330 = 220Ω/330Ω
All standard part numbers are ±2%

NOTE: No dashes or spaces to appear in part number.

Example: 7603R4.7K

See page 45 for part marking information.