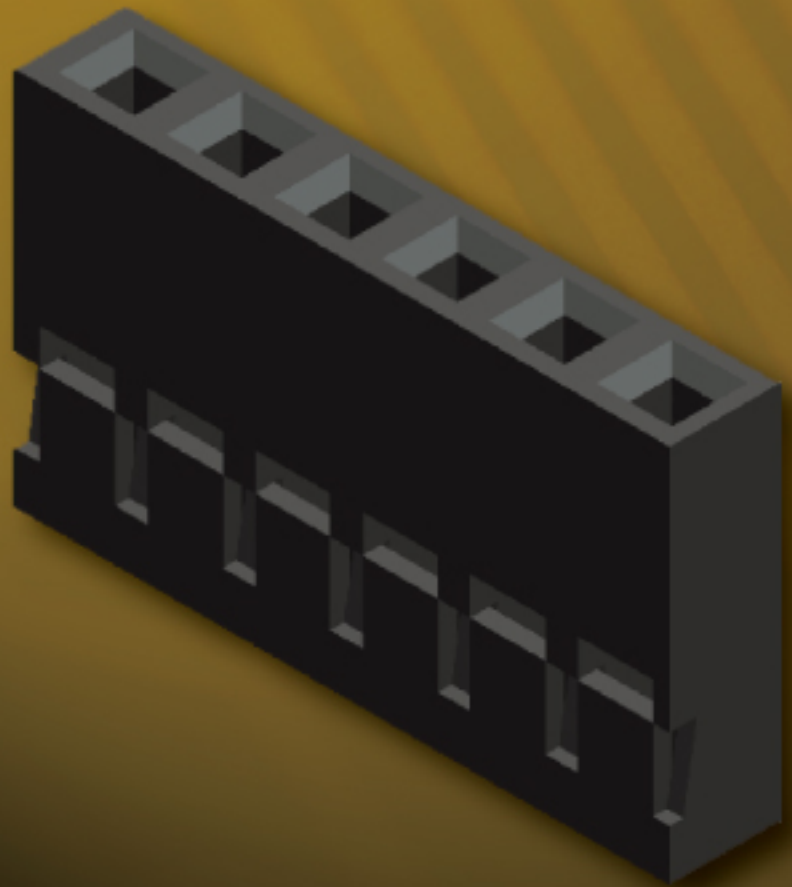


# Board To Wire & Wire To Wire Connectors

---

3-27~3-42 • Housing Wafer Terminal 2.0mm



**AMTEK Technology Co., Ltd**

# CONNECTORS MANUFACTURER

Old P/N.:2000 Series

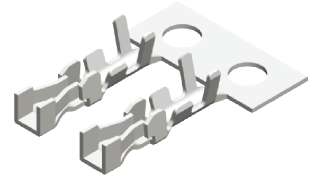
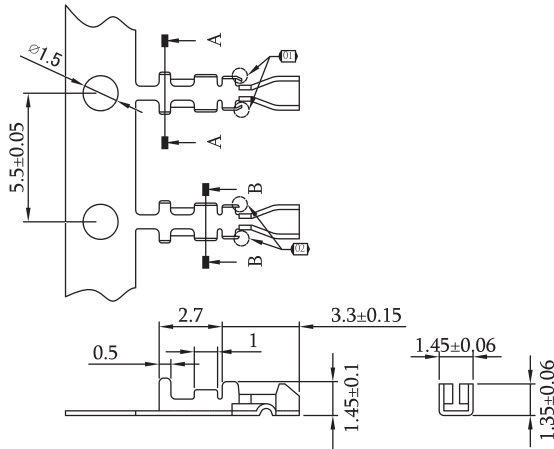
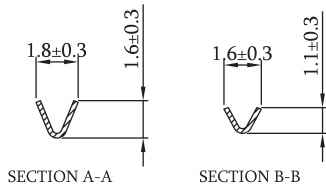
## 2.0mm 2000 Series Terminal / Housing

### Specifications

Current Rating: 1A AC, DC  
 Voltage Rating: 130V AC, DC  
 Temperature Range: -25°C to +85°C  
 Contact Resistance: 20mΩ Max  
 Insulation Resistance: 1000MΩ Min  
 Withstanding Voltage: 800V AC/minute

### Material

Housing: Nylon 66, UL 94V-2

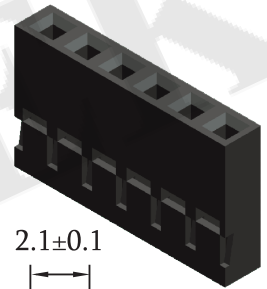
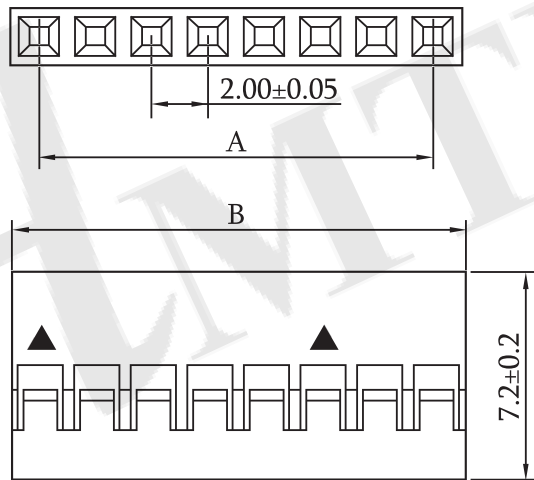


Wire Range	Insulation O.D.	Material	Finish
#26-#30	1.35mm(Max)	Phosphor Bronze	Gold Plated

**P/N.:5T2000N-PG0R\*0X**

Optional   
 1:21P~80P, Inserting Force: 80gf  
 2:02P~20P, Inserting Force: 150gf

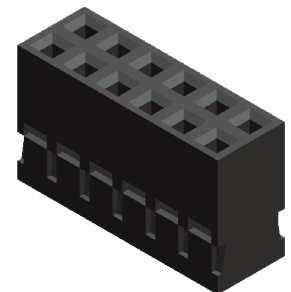
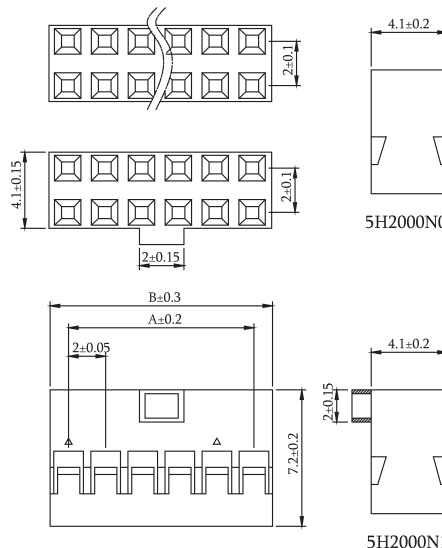
No. of Contacts	Dimensions	
	A	B
02	0.80	2.40
03	1.60	3.20
04	2.40	4.00
05	3.20	4.80
06	4.00	5.60
07	4.80	6.40
08	5.60	7.20
09	6.40	8.00
10	7.20	8.80
11	8.00	9.60
12	8.80	10.40
14	10.40	12.00
15	11.20	12.80
16	11.20	13.60
17	12.80	14.40
20	15.20	16.80



**P/N.:5H2000N0-1XXBBL00\*02**

Optional

No. of Contacts	Dimensions		No. of Contacts	Dimensions	
	A	B		A	B
2×02	2.00	4.20	2×15	28.00	30.20
2×03	4.00	6.20	2×16	30.00	32.20
2×04	6.00	8.20	2×17	32.00	34.20
2×05	8.00	10.20	2×18	34.00	36.20
2×06	10.00	12.20	2×19	36.00	38.20
2×07	12.00	14.20	2×20	38.00	40.20
2×08	14.00	16.20	2×21	40.00	42.20
2×09	16.00	18.20	2×22	42.00	44.20
2×10	18.00	20.20	2×23	44.00	46.20
2×11	20.00	22.20	2×24	46.00	48.20
2×12	22.00	24.20	2×25	48.00	50.20
2×13	24.00	26.20	2×30	58.00	60.20
2×14	26.00	28.20	2×40	78.00	80.20



**P/N.:5H2000NX-2XXBBL00\*01**

0:W/O Bump 1:With Bump  Optional

Housing Wafer Terminal

ROHS

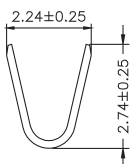
## 2.0mm 2001 Series Terminal / Housing / Wafer SMT & SMT R/A Type

### Specifications

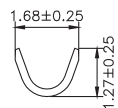
Current Rating: 2A AC, DC  
 Voltage Rating: 100V AC, DC  
 Temperature Range: -25°C to +85°C  
 Contact Resistance: 10mΩ Max  
 Insulation Resistance: 1000MΩ Min  
 Withstanding Voltage: 800V AC/minute

### Material

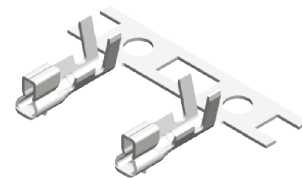
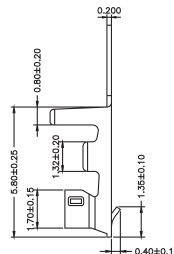
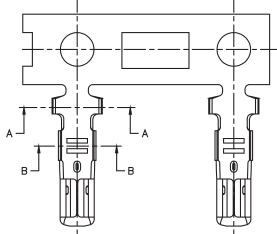
Housing: Nylon 66, UL 94V-0  
 Wafer: Nylon 6T, UL 94V-0  
 Terminal: Brass / Gold Plated



SEC:A-A



SEC:B-B

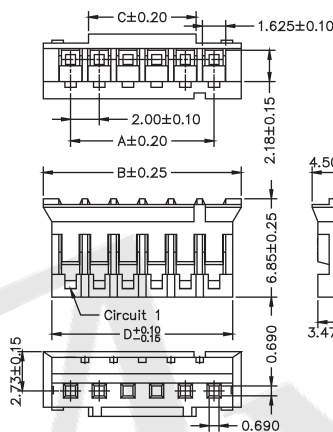


Part No.	Wire Range	Insulation O.D.	Material	Finish
5T2001N-PT0	#24-#30	1.50mm(Max)	Phosphor Bronze	Tin Plated
5T2001N-PG0				Gold Plated

P/N.:5T2001N-PXXR\*01

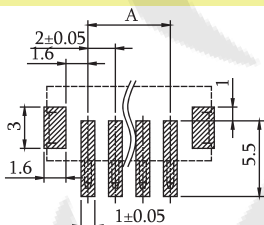
G0:Gold Flash T0:Tin Plated  
 Optional

No. of Contacts	Dimensions			
	A	B	C	D
02	2.00	5.80	0.50	4.60
03	4.00	7.80	1.68	6.60
04	6.00	9.80	3.50	8.60
05	8.00	11.80	5.50	10.60
06	10.00	13.80	7.50	12.60
07	12.00	15.80	9.50	14.60
08	14.00	17.80	11.50	16.60
09	16.00	19.80	13.50	18.60
10	18.00	21.80	15.50	20.60
11	20.00	23.80	17.50	22.60
12	22.00	25.80	19.50	24.60
13	24.00	27.80	21.50	26.60
14	26.00	29.80	23.50	28.60
15	28.00	31.80	25.50	30.60
16	30.00	33.80	27.50	32.60
17	32.00	35.80	29.50	34.60
18	34.00	37.80	31.50	36.60
19	36.00	39.80	33.50	38.60
20	38.00	41.80	35.50	40.60
21	40.00	43.80	37.50	42.60
22	42.00	45.80	39.50	44.60



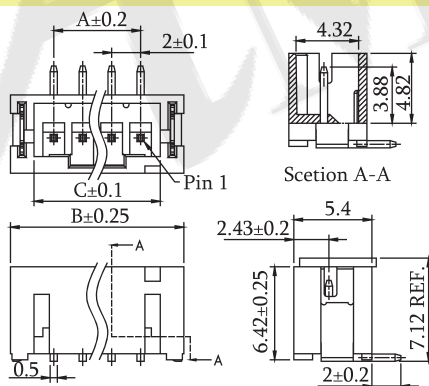
P/N.:5H2001N0-1XXXBL00\*01

W:White B:Black  
 Optional



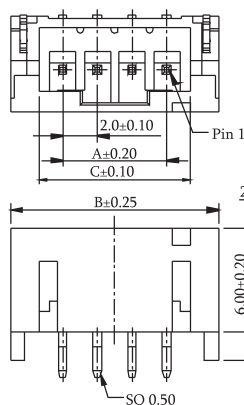
Recommended PCB Layout  
 (PCB TOLERANCE ±0.05)

No. of Contacts	Dimensions		
	A	B	C
02	2.00	8.00	4.72
03	4.00	10.00	6.72
04	6.00	12.00	8.72
05	8.00	14.00	10.72
06	10.00	16.00	12.72
07	12.00	18.00	14.72
08	14.00	20.00	16.72
09	16.00	22.00	18.72
10	18.00	24.00	20.72
11	20.00	26.00	22.72
12	22.00	28.00	24.72
13	24.00	30.00	26.72
14	26.00	32.00	28.72
15	28.00	34.00	30.72
16	30.00	36.00	32.72



P/N.:5W2001G0-1XXXXWRU\*01

G0:Gold Flash T0:Tin Plated  
 Optional



P/N.:5W2001H0-1XXG0XHU\*01

W:Natural B:Black  
 Optional

# CONNECTORS MANUFACTURER

Old P/N.:2001 Series

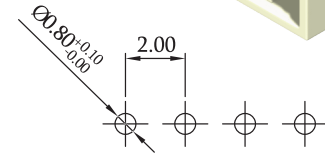
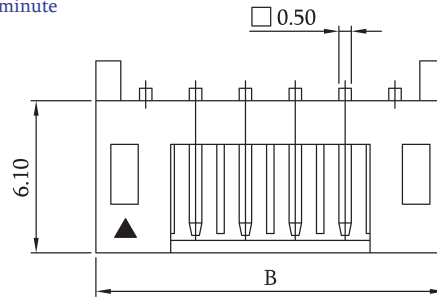
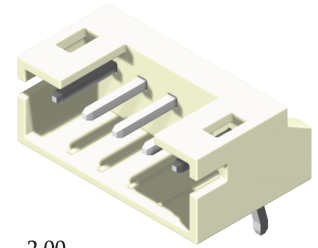
## 2.0mm 2001 Series Wafer Right Angle & Straight Type

### Specifications

Current Rating: 2A AC, DC  
 Voltage Rating: 100V AC, DC  
 Temperature Range: -25°C to +85°C  
 Contact Resistance: 10mΩ Max  
 Insulation Resistance: 1000MΩ Min  
 Withstanding Voltage: 800V AC/minute

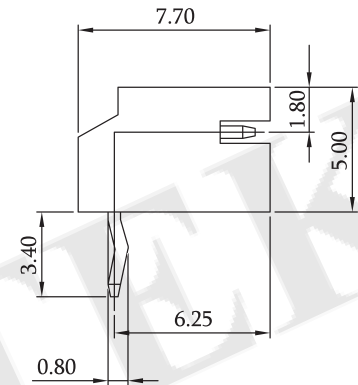
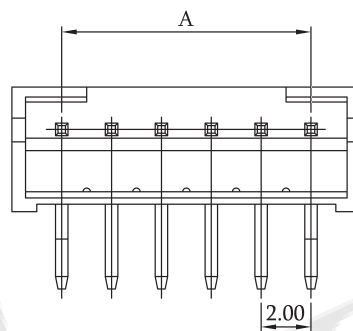
### Material

Wafer: Nylon 66, UL 94V-0  
 Terminal: Brass / Tin Plated

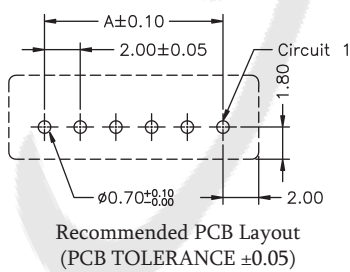


Recommended PCB Layout  
(PCB TOLERANCE ±0.05)

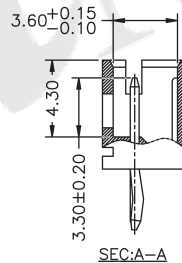
No. of Contacts	Dimensions	
	A	B
02	2.00	6.00
03	4.00	8.00
04	6.00	10.00
05	8.00	12.00
06	10.00	14.00
07	12.00	16.00
08	14.00	18.00
09	16.00	20.00
10	18.00	22.00
11	20.00	24.00
12	22.00	26.00
13	24.00	28.00
14	26.00	30.00
15	28.00	32.00
16	30.00	34.00



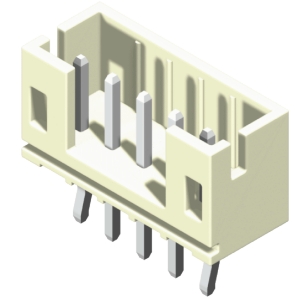
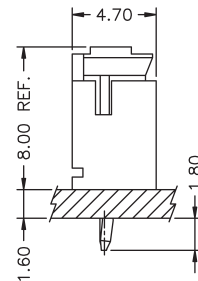
P/N.:5W2001R0-1XXT0WBL\*01  
 Optional



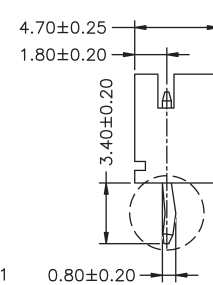
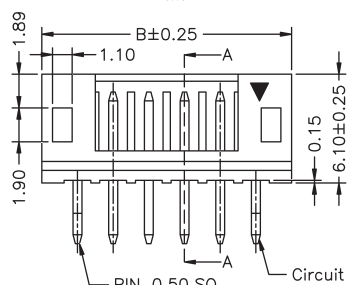
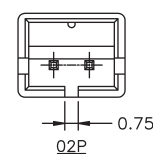
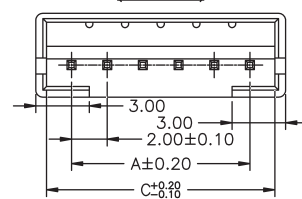
Recommended PCB Layout  
(PCB TOLERANCE ±0.05)



(TOP VIEW)



No. of Contacts	Dimensions		
	A	B	C
02	2.00	6.00	4.80
03	4.00	8.00	6.80
04	6.00	10.00	8.80
05	8.00	12.00	10.80
06	10.00	14.00	12.80
07	12.00	16.00	14.80
08	14.00	18.00	16.80
09	16.00	20.00	18.80
10	18.00	22.00	20.80
11	20.00	24.00	22.80
12	22.00	26.00	24.80
13	24.00	28.00	26.80
14	26.00	30.00	28.80
15	28.00	32.00	30.80
16	30.00	34.00	32.80
17	32.00	36.00	34.80
18	34.00	38.00	36.80



P/N.:5W2001S0-1XXT0XBL\*01  
 W:White B:Black U:Blue  
 Optional

Housing Wafer Terminal

ROHS



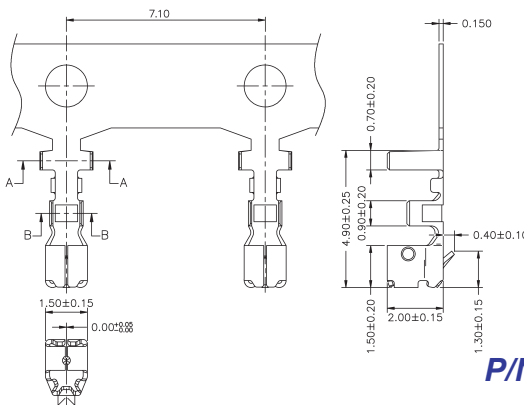
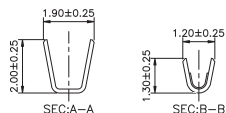
## 2.0mm 2002 Series Terminal / Housing / Wafer Right Angle & Straight Type

### Specifications

Current Rating: 2A AC, DC  
 Voltage Rating: 125V AC, DC  
 Temperature Range: -25°C to +85°C  
 Contact Resistance: 20mΩ Max  
 Insulation Resistance: 1000MΩ Min  
 Withstanding Voltage: 800V AC/minute

### Material

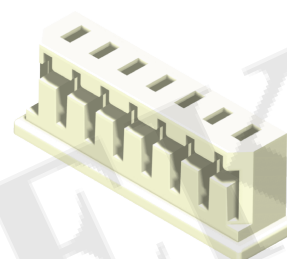
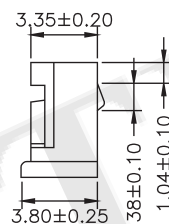
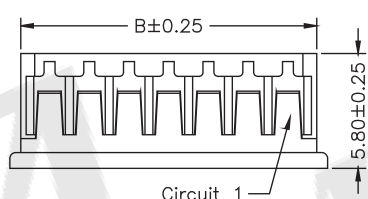
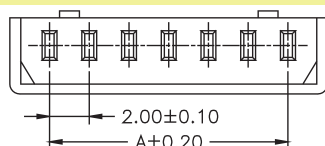
Housing / Wafer: Nylon 66, UL 94V-0  
 Terminal: Brass / Tin Plated



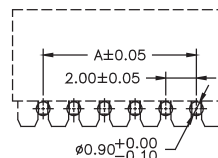
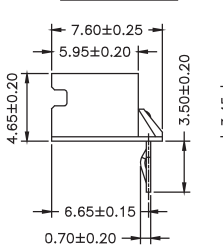
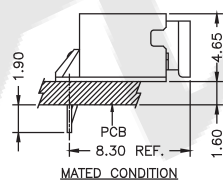
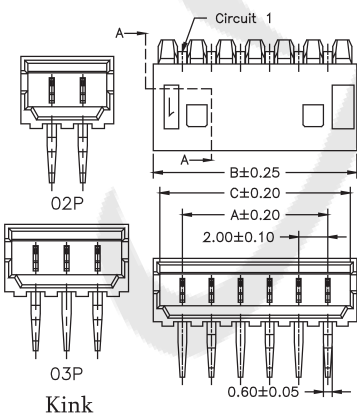
Wire Range	Insulation O.D.	Material	Finish
#24-#30	1.40mm(Max)	Phosphor Bronze	Tin Plated

**P/N.:5T2002N-PT0R\*01**  
 Optional

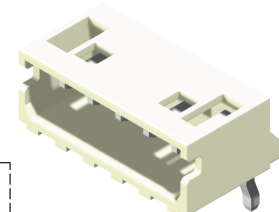
No. of Contacts	Dimensions	
	A	B
02	2.00	4.90
03	4.00	6.90
04	6.00	8.90
05	8.00	10.90
06	10.00	12.90
07	12.00	14.90
08	14.00	16.90
09	16.00	18.90
10	18.00	20.90
11	20.00	22.90
12	22.00	24.90
13	24.00	26.90
14	26.00	28.90
15	28.00	30.90



**P/N.:5H2002N0-1XXWBL00\*01**  
 Optional

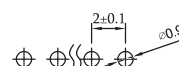
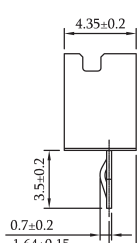
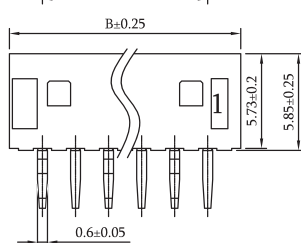
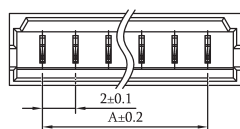


Recommended PCB Layout  
 (PCB TOLERANCE ±0.05)

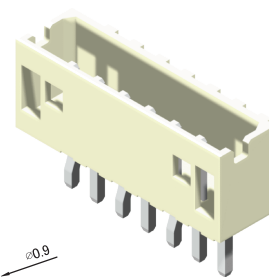


**P/N.:5W2002R0-1XXT0WTL\*01**  
 Optional

No. of Contacts	Dimensions		
	A	B	C
02	2.00	6.00	5.10
03	4.00	8.00	7.10
04	6.00	10.00	9.10
05	8.00	12.00	11.10
06	10.00	14.00	13.10
07	12.00	16.00	15.10
08	14.00	18.00	17.10
09	16.00	20.00	19.10
10	18.00	22.00	21.10
11	20.00	24.00	23.10
12	22.00	26.00	25.10
13	24.00	28.00	27.10
14	26.00	30.00	29.10
15	28.00	32.00	31.10



Recommended PCB Layout  
 (PCB TOLERANCE ±0.05)



**P/N.:5W2002S0-1XXT0WXL\*01**  
 T:Tube B:Bag   
 Optional

# CONNECTORS MANUFACTURER

Old P/N.:2003 Series

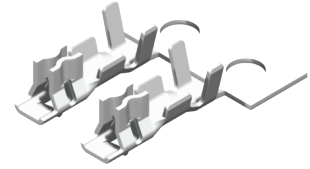
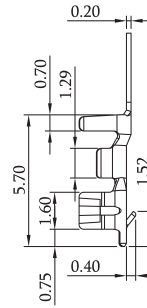
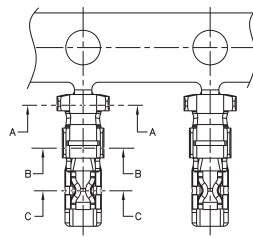
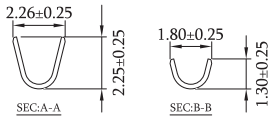
## 2.0mm 2003 Series Terminal / Housing / Wafer Right Angle & Straight Type

### Specifications

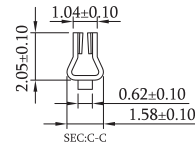
Current Rating: 3A AC, DC  
 Voltage Rating: 250V AC, DC  
 Temperature Range: -25°C to +85°C  
 Contact Resistance: 30mΩ Max  
 Insulation Resistance: 1000MΩ Min  
 Withstanding Voltage: 650V AC/minute

### Material

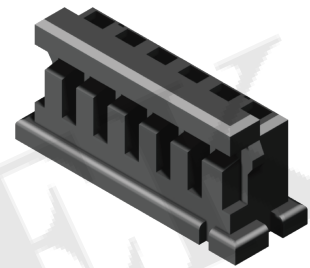
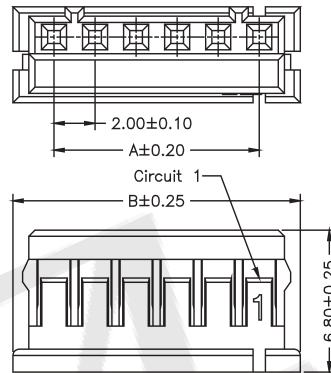
Housing: Nylon 66, UL 94V-0  
 Wafer: Nylon 6T, UL 94V-0  
 Terminal: Brass / Gold Plated



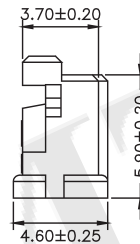
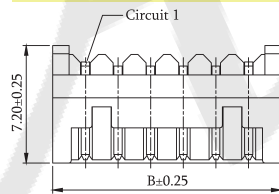
Wire Range	Insulation O.D.	Material	Finish
#22-#28	1.45mm(Max)	Phosphor Bronze	Tin Plated



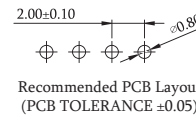
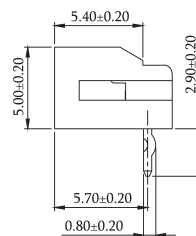
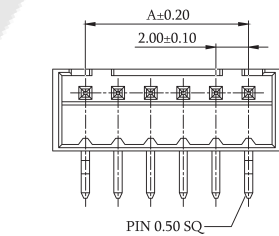
P/N.:5T2003N-PT0R\*01  
 Optional



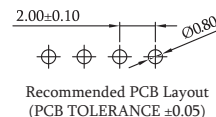
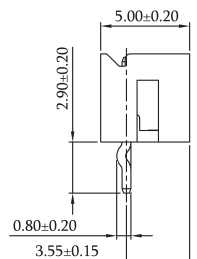
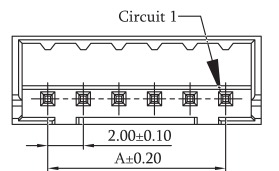
No. of Contacts	Dimensions	
	A	B
02	2.00	6.00
03	4.00	8.00
04	6.00	10.00
05	8.00	12.00
06	10.00	14.00
07	12.00	16.00
08	14.00	18.00
09	16.00	20.00
10	18.00	22.00
11	20.00	24.00
12	22.00	26.00
13	24.00	28.00
14	26.00	30.00
15	28.00	32.00



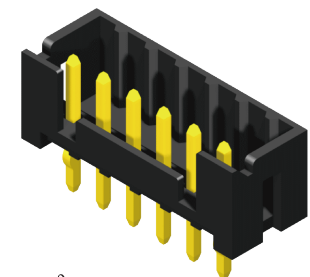
P/N.:5H2003N0-1XXBBL00\*01  
 Optional



P/N.:5W2003R0-1XXG0BBU\*01  
 Optional



P/N.:5W2003S0-1XXG0BBU\*01  
 Optional



Housing Wafer Terminal

ROHS

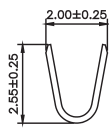
## 2.0mm 2004 Series Terminal / Housing

### Specifications

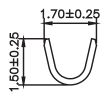
Current Rating: 3A AC, DC  
 Voltage Rating: 250V AC, DC  
 Temperature Range: -25°C to +85°C  
 Contact Resistance: 10mΩ Max  
 Insulation Resistance: 1000MΩ Min  
 Withstanding Voltage: 800V AC/minute

### Material

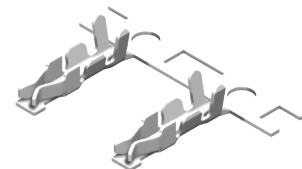
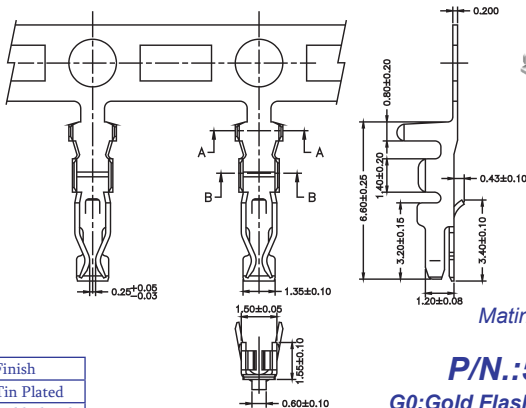
Housing: Nylon 66, UL 94V-0



SEC:A-A



SEC:B-B

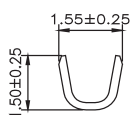


Mating: 5H2004N0-2XXWBL00A01  
 5H2004N1-2XXWBL00A01

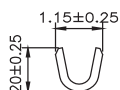
**P/N.:5T2004N-PXXR\*01**

G0:Gold Flash T0:Tin Plated  
 Optional

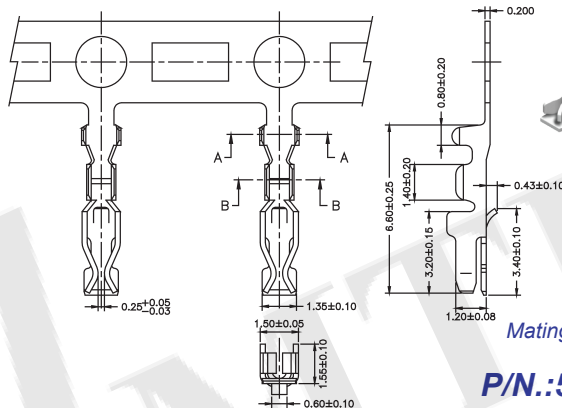
Part No.	Wire Range	Insulation O.D.	Material	Finish
5T2004N-PT0	#22-#28	1.50mm(Max)	Phosphor Bronze	Tin Plated
5T2004N-PG0				Gold Plated



SEC:A-A



SEC:B-B



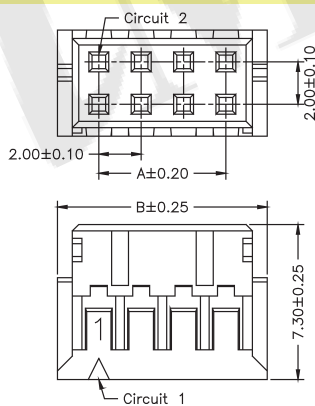
Mating: 5H2004N0-2XXWBL00A01  
 5H2004N1-2XXWBL00A01

**P/N.:5T2004N-PT0R\*02**

Optional

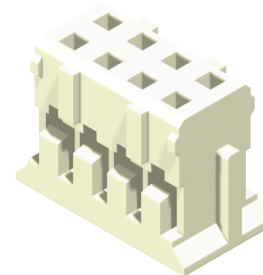
Wire Range	Insulation O.D.	Material	Finish
#28-#32	0.90mm(Max)	Phosphor Bronze	Tin Plated

No. of Contacts	Dimensions		No. of Contacts	Dimensions	
	A	B		A	B
2×02	2.00	5.90	2×12	22.00	25.90
2×03	4.00	7.90	2×13	24.00	27.90
2×04	6.00	9.90	2×14	26.00	29.90
2×05	8.00	11.90	2×15	28.00	31.90
2×06	10.00	13.90	2×16	30.00	33.90
2×07	12.00	15.90	2×17	32.00	35.90
2×08	14.00	17.90	2×18	34.00	37.90
2×09	16.00	19.90	2×19	36.00	39.90
2×10	18.00	21.90	2×20	38.00	41.90
2×11	20.00	23.90	---	---	---

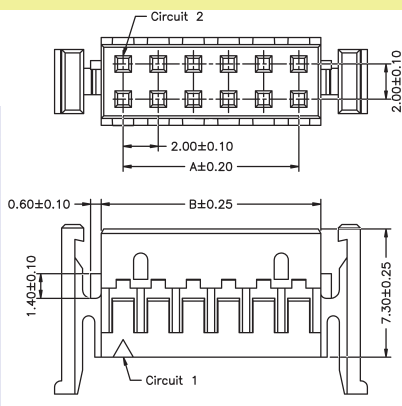


**P/N.:5H2004N0-2XXWBL00\*01**

Optional

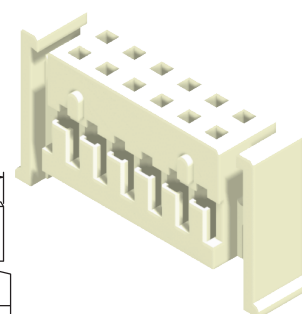


No. of Contacts	Dimensions		No. of Contacts	Dimensions	
	A	B		A	B
2×02	2.00	4.50	2×12	22.00	24.50
2×03	4.00	6.50	2×13	24.00	26.50
2×04	6.00	8.50	2×14	26.00	28.50
2×05	8.00	10.50	2×15	28.00	30.50
2×06	10.00	12.50	2×16	30.00	32.50
2×07	12.00	14.50	2×17	32.00	34.50
2×08	14.00	16.50	2×18	34.00	36.50
2×09	16.00	18.50	2×19	36.00	38.50
2×10	18.00	20.50	2×20	38.00	40.50
2×11	20.00	22.50	---	---	---



**P/N.:5H2004N1-2XXWBL00\*01**

Optional





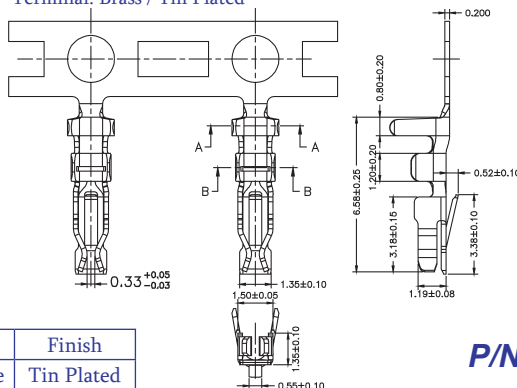
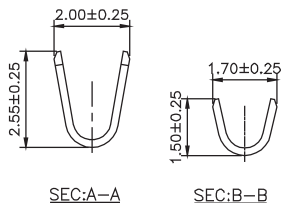
## 2.0mm 2004 Series Terminal / Housing / Wafer Right Angle & Straight Type

### Specifications

Current Rating: 3A AC, DC  
 Voltage Rating: 250V AC, DC  
 Temperature Range: -25°C to +85°C  
 Contact Resistance: 10mΩ Max  
 Insulation Resistance: 1000MΩ Min  
 Withstanding Voltage: 800V AC/minute

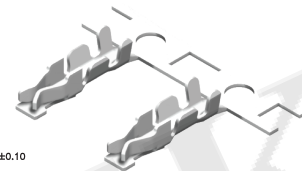
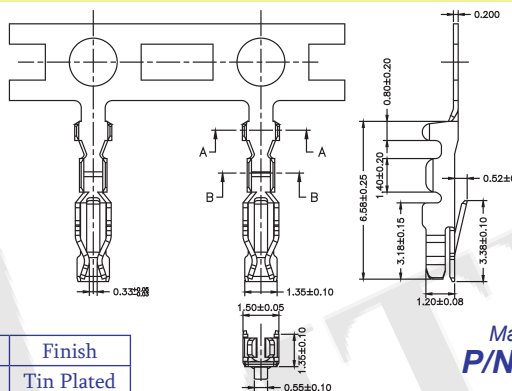
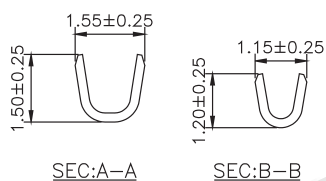
### Material

Housing / Wafer: Nylon 66, UL 94V-0  
 Terminal: Brass / Tin Plated



Wire Range	Insulation O.D.	Material	Finish
#22-#28	1.50mm(Max)	Phosphor Bronze	Tin Plated

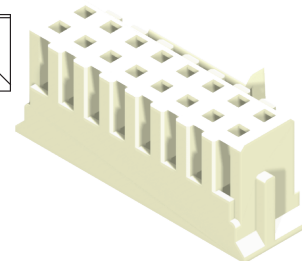
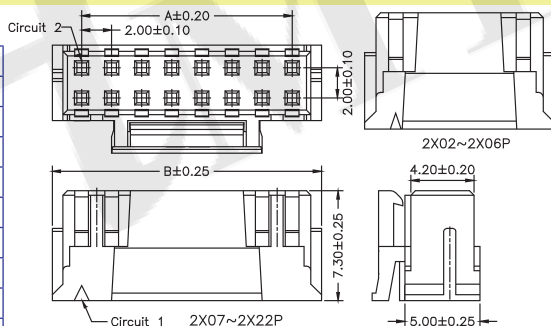
P/N.:5T2004N-PT0R\*03  
 Optional



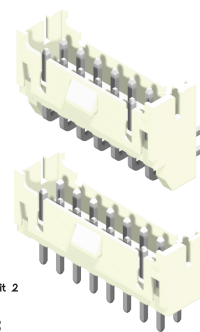
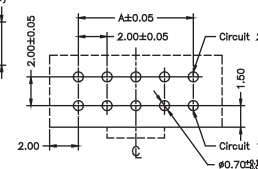
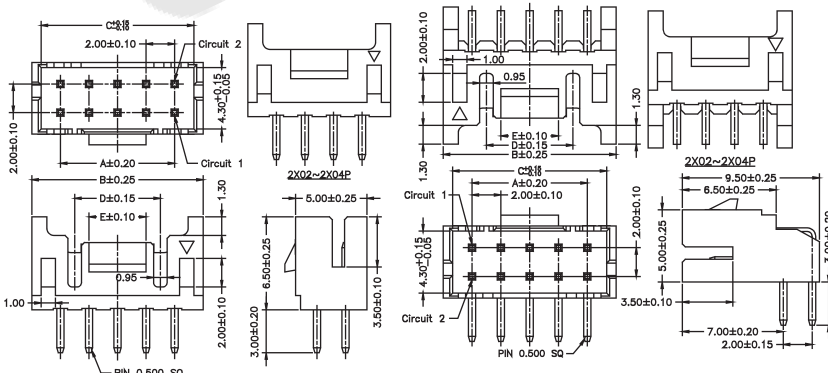
Wire Range	Insulation O.D.	Material	Finish
#28-#32	0.90mm(Max)	Phosphor Bronze	Tin Plated

Mating:5H2004N2-2XXWBL00A01  
 P/N.:5T2004N-PT0R\*04  
 Optional

No. of Contacts	Dimensions		No. of Contacts	Dimensions	
	A	B		A	B
2×3	4.00	7.90	2×12	22.00	25.90
2×4	6.00	9.90	2×13	24.00	27.90
2×5	8.00	11.90	2×14	26.00	29.90
2×6	10.00	13.90	2×15	28.00	31.90
2×7	12.00	15.90	2×16	30.00	33.90
2×8	14.00	17.90	2×17	32.00	35.90
2×9	16.00	19.90	2×18	34.00	37.90
2×10	18.00	21.90	2×19	36.00	39.90
2×11	20.00	23.90	2×20	38.00	41.90



P/N.:5H2004N2-2XXWBL00\*01  
 Optional



No. of Contacts	Dimensions					No. of Contacts	Dimensions					No. of Contacts	Dimensions				
	A	B	C	D	E		A	B	C	D	E		A	B	C	D	E
2×2	2.00	8.00	4.70	---	1.50	2×09	16.00	20.00	18.70	14.00	2×16	30.00	34.00	32.70	28.00		
2×3	4.00	8.00	6.70	---	3.00	2×10	18.00	22.00	20.70	16.00	2×17	32.00	36.00	34.70	30.00		
2×4	6.00	10.00	8.70	---	4.00	2×11	20.00	24.00	22.70	18.00	2×18	34.00	38.00	36.70	32.00		
2×5	8.00	12.00	10.70	6.00	4.00	2×12	22.00	26.00	24.70	20.00	2×19	36.00	40.00	38.70	34.00		
2×6	10.00	14.00	12.70	8.00	5.00	2×13	24.00	28.00	26.70	22.00	2×20	38.00	42.00	40.70	36.00		
2×7	12.00	16.00	14.70	10.00	5.00	2×14	26.00	30.00	28.70	24.00	2×21	40.00	44.00	42.70	38.00		
2×8	14.00	18.00	16.70	12.00	5.00	2×15	28.00	32.00	30.70	26.00	2×22	42.00	46.00	44.70	40.00		

Recommended PCB Layout  
 (PCB TOLERANCE ±0.05)

P/N.:5W2004S1-2XXT0WBL\*01  
 5W2004R1-2XXT0WAL\*01  
 Optional



# CONNECTORS MANUFACTURER

Old P/N.:2005 Series

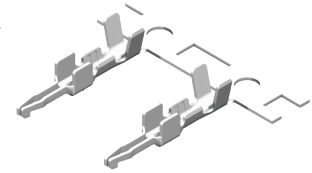
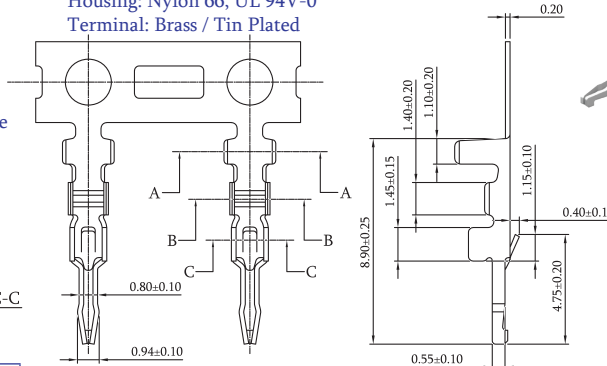
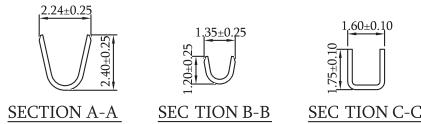
## 2.0mm 2005 Series Terminal / Housing

### Specifications

Current Rating: 2A AC, DC  
 Voltage Rating: 250V AC, DC  
 Temperature Range: -25°C to +85°C  
 Contact Resistance: 20mΩ Max  
 Insulation Resistance: 1000MΩ Min  
 Withstanding Voltage: 800V AC/minute

### Material

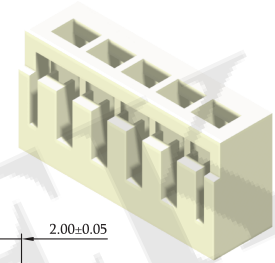
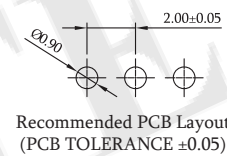
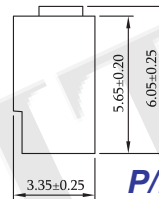
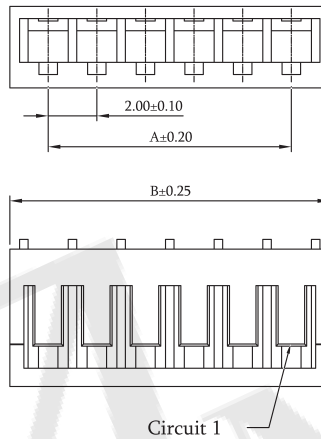
Housing: Nylon 66, UL 94V-0  
 Terminal: Brass / Tin Plated



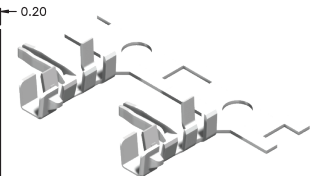
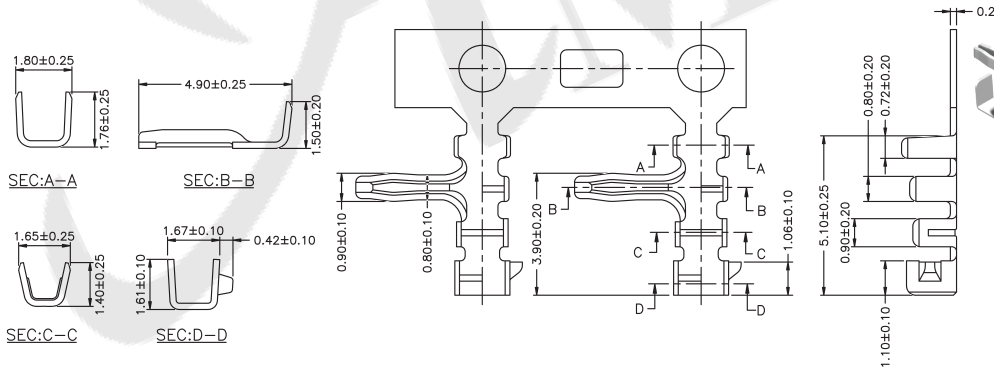
Wire Range	Insulation O.D.	Material	Finish
#24-#30	1.30mm(Max)	Brass	Tin Plated

P/N.:5T2005N-BT0R\*01  
 Optional

No. of Contacts	Dimensions	
	A	B
02	2.00	5.15
03	4.00	7.15
04	6.00	9.15
05	8.00	11.15
06	10.00	13.15
07	12.00	15.15
08	14.00	17.15
09	16.00	19.15
10	18.00	21.15
11	20.00	23.15
12	22.00	25.15
13	24.00	27.15
14	26.00	29.15
15	28.00	31.15



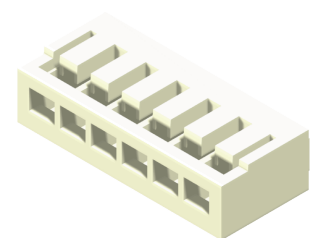
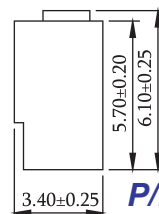
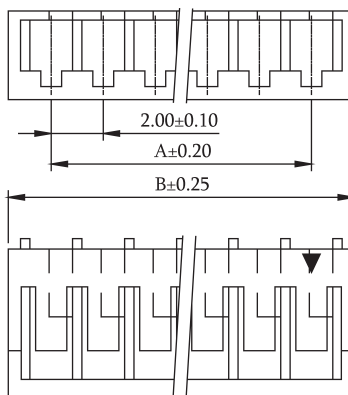
P/N.:5H2005N0-1XXWBL00\*01  
 Optional



Wire Range	Insulation O.D.	Material	Finish
#24-#30	1.30mm(Max)	Brass	Tin Plated

P/N.:5T2005N-BT0R\*02  
 Optional

No. of Contacts	Dimensions	
	A	B
02	2.00	5.15
03	4.00	7.15
04	6.00	9.15
05	8.00	11.15
06	10.00	13.15
07	12.00	15.15
08	14.00	17.15
09	16.00	19.15
10	18.00	21.15
11	20.00	23.15
12	22.00	25.15
13	24.00	27.15
14	26.00	29.15
15	28.00	31.15
16	30.00	33.15



P/N.:5H2005N1-1XXWBL00\*01  
 Optional

Housing Wafer Terminal

ROHS

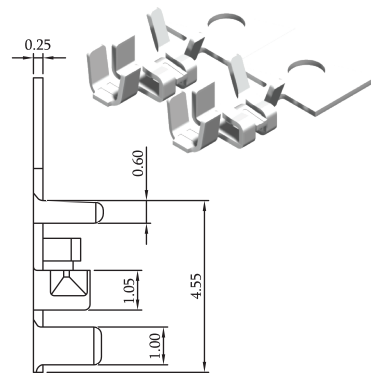
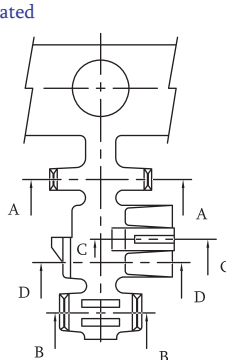
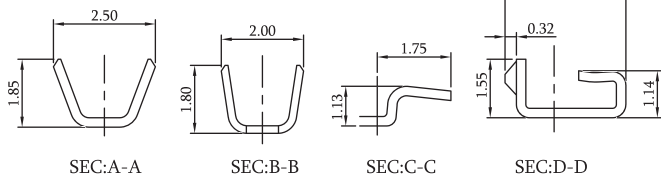
## 2.0mm 2006 Series Terminal / Housing / Wafer Right Angle & Straight Type

### Specifications

Current Rating: 4A AC, DC  
 Voltage Rating: 125V AC, DC  
 Temperature Range: -25°C to +85°C  
 Contact Resistance: 10mΩ Max  
 Insulation Resistance: 1000MΩ Min  
 Withstanding Voltage: 1000V AC/minute

### Material

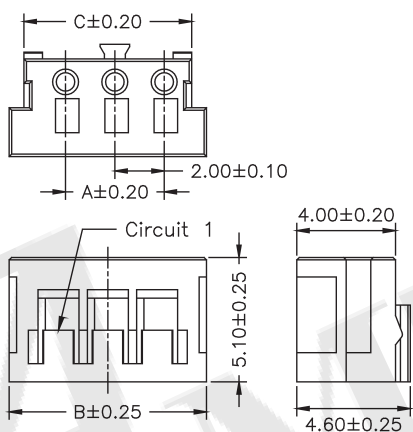
Housing / Wafer: Nylon 66, UL 94V-0  
 Terminal: Brass / Tin Plated



**P/N.:5T2006N-PT0R\*01**  
 Optional

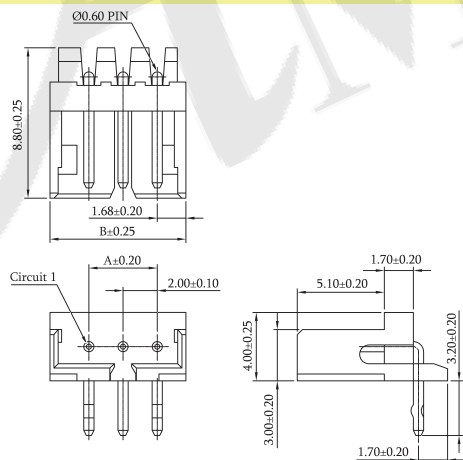
Wire Range	Insulation O.D.	Material	Finish
#22-#26	1.50mm(Max)	Phosphor Bronze	Tin Plated

No. of Contacts	Dimensions		
	A	B	C
02	2.00	6.00	4.80
03	4.00	8.00	6.80
04	6.00	10.00	8.80
05	8.00	12.00	10.80
06	10.00	14.00	12.80
07	12.00	16.00	14.80
08	14.00	18.00	16.80
09	16.00	20.00	18.80
10	18.00	22.00	20.80
11	20.00	24.00	22.80
12	22.00	26.00	24.80
13	24.00	28.00	26.80
14	26.00	30.00	28.80
15	28.00	32.00	30.80



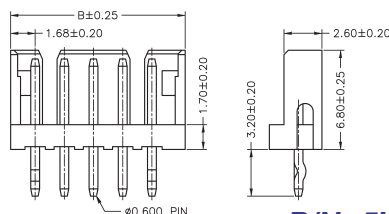
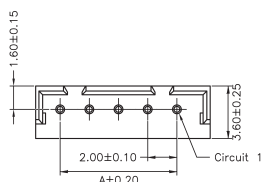
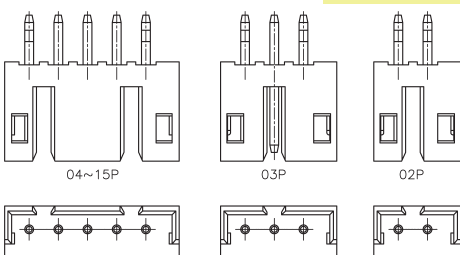
**P/N.:5H2006N0-1XXWBL00\*01**  
 Optional

No. of Contacts	Dimensions	
	A	B
02	2.00	5.96
03	4.00	7.96
04	6.00	9.96
05	8.00	11.96
06	10.00	13.96
07	12.00	15.96
08	14.00	17.96
09	16.00	19.96
10	18.00	21.96
11	20.00	23.96
12	22.00	25.96
13	24.00	27.96
14	26.00	29.96
15	28.00	31.96



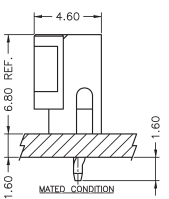
Recommended PCB Layout  
 (PCB TOLERANCE ±0.05)

**P/N.:5W2006R0-1XXT0WBL\*01**  
 Optional



Recommended PCB Layout  
 (PCB TOLERANCE ±0.05)

**P/N.:5W2006S0-1XXT0WBL\*01**  
 Optional



# CONNECTORS MANUFACTURER

Old P/N.:2007 Series

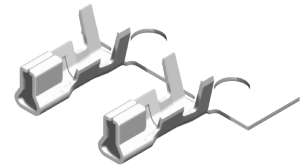
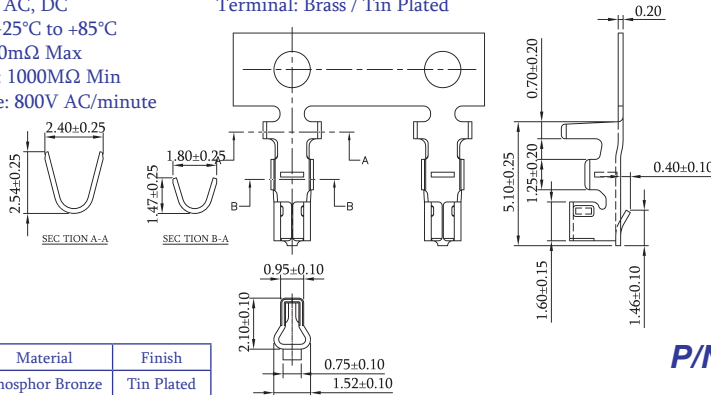
## 2.0mm 2007 Series Terminal / Housing / Wafer Right Angle & Straight Type

### Specifications

Current Rating: 3A AC, DC  
 Voltage Rating: 300V AC, DC  
 Temperature Range: -25°C to +85°C  
 Contact Resistance: 20mΩ Max  
 Insulation Resistance: 1000MΩ Min  
 Withstanding Voltage: 800V AC/minute

### Material

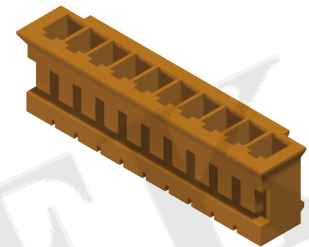
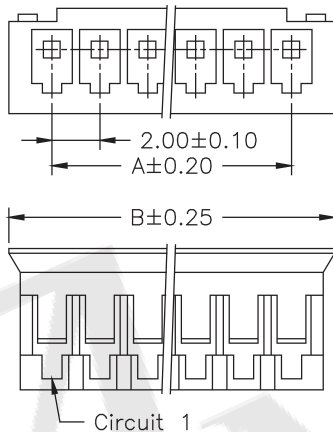
Housing / Wafer: Nylon 66, UL 94V-0  
 Terminal: Brass / Tin Plated



Wire Range	Insulation O.D.	Material	Finish
#24-#28	1.50mm(Max)	Phosphor Bronze	Tin Plated

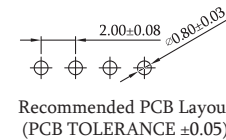
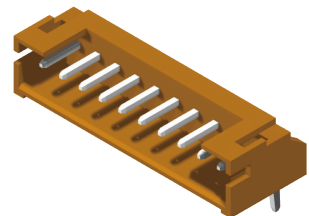
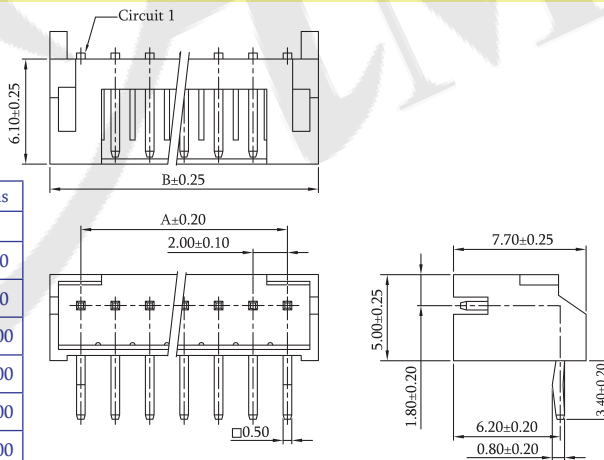
P/N.:5T2007N-PT0R\*01  
 Optional

No. of Contacts	Dimensions	
	A	B
02	2.00	5.60
03	4.00	7.60
04	6.00	9.60
05	8.00	11.60
06	10.00	13.60
07	12.00	15.60
08	14.00	17.60
09	16.00	19.60
10	18.00	21.60
11	20.00	23.60
12	22.00	25.60
13	24.00	27.60
14	26.00	29.60
15	28.00	31.60



P/N.:5H2007N0-1XXRBL00\*01  
 Optional

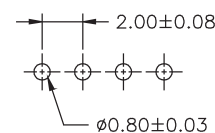
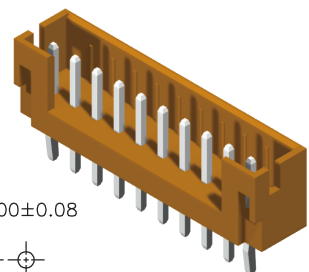
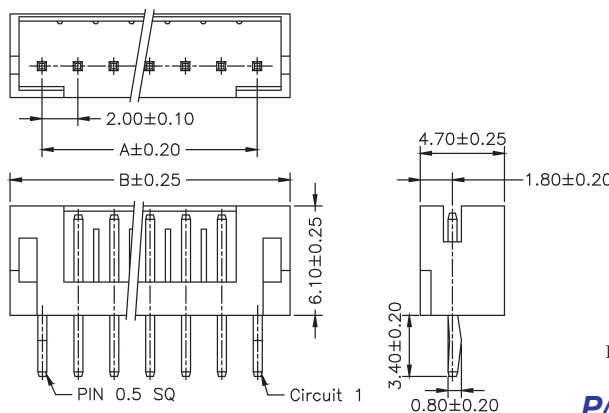
No. of Contacts	Dimensions	
	A	B
02	2.00	6.00
03	4.00	8.00
04	6.00	10.00
05	8.00	12.00
06	10.00	14.00
07	12.00	16.00
08	14.00	18.00
09	16.00	20.00
10	18.00	22.00
11	20.00	24.00
12	22.00	26.00
13	24.00	28.00
14	26.00	30.00
15	28.00	32.00



Recommended PCB Layout  
 (PCB TOLERANCE ±0.05)

P/N.:5W2007R0-1XXT0RBL\*01  
 Optional

No. of Contacts	Dimensions	
	A	B
02	2.00	5.60
03	4.00	7.60
04	6.00	9.60
05	8.00	11.60
06	10.00	13.60
07	12.00	15.60
08	14.00	17.60
09	16.00	19.60
10	18.00	21.60
11	20.00	23.60
12	22.00	25.60
13	24.00	27.60
14	26.00	29.60
15	28.00	31.60



Recommended PCB Layout  
 (PCB TOLERANCE ±0.05)

P/N.:5W2007S0-1XXT0RBL\*01  
 Optional

Housing Wafer Terminal

ROHS

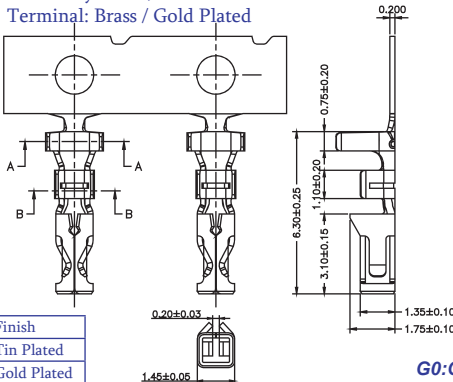
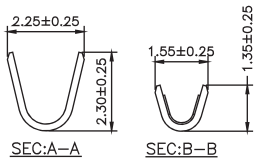
## 2.0mm 2008 Series Terminal / Housing / Wafer Right Angle & Straight Type

### Specifications

Current Rating: 3A AC, DC  
 Voltage Rating: 250V AC, DC  
 Temperature Range: -25°C to +85°C  
 Contact Resistance: 30mΩ Max  
 Insulation Resistance: 1000MΩ Min  
 Withstanding Voltage: 1000V AC/minute

### Material

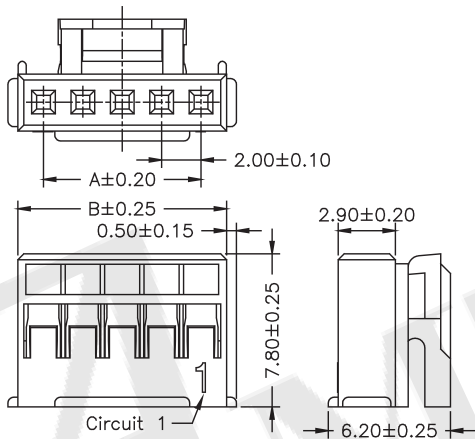
Housing: Nylon 66, UL 94V-0  
 Wafer: Nylon 46, UL 94V-0  
 Terminal: Brass / Gold Plated



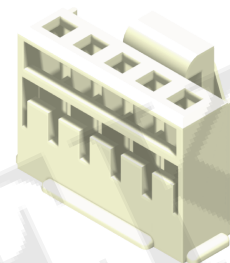
Part No.	Wire Range	Insulation O.D.	Material	Finish
5T2008N-PT0	#22-#30	1.45mm(Max)	Phosphor Bronze	Tin Plated
5T2008N-PG0				Gold Plated

P/N.:5T2008N-PXXR\*01  
 G0:Gold Flash T0:Tin Plated Optional

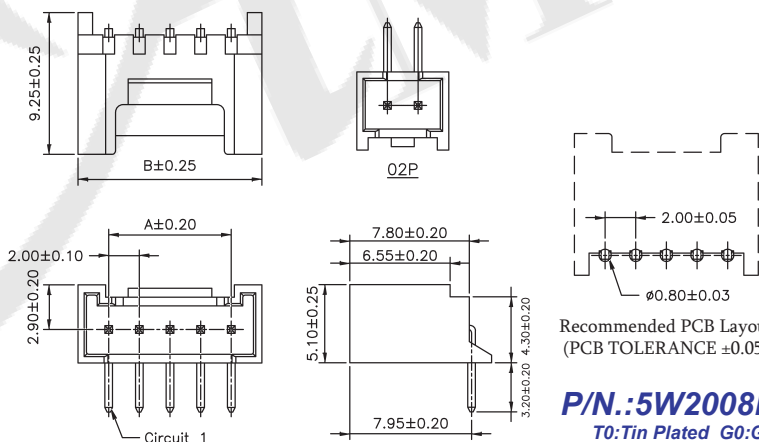
No. of Contacts	Dimensions	
	A	B
02	2.00	4.60
03	4.00	6.60
04	6.00	8.60
05	8.00	10.60
06	10.00	12.60
07	12.00	14.60
08	14.00	16.60
09	16.00	18.60
10	18.00	20.60
11	20.00	22.60
12	22.00	24.60
13	24.00	26.60
14	26.00	28.60
15	28.00	30.60



P/N.:5H2008N0-1XXWBL00\*01  
 Optional

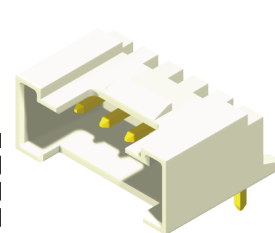


No. of Contacts	Dimensions	
	A	B
02	2.00	6.00
03	4.00	8.00
04	6.00	10.00
05	8.00	12.00
06	10.00	14.00
07	12.00	16.00
08	14.00	18.00
09	16.00	20.00
10	18.00	22.00
11	20.00	24.00
12	22.00	26.00
13	24.00	28.00
14	26.00	30.00
15	28.00	32.00
16	30.00	34.00

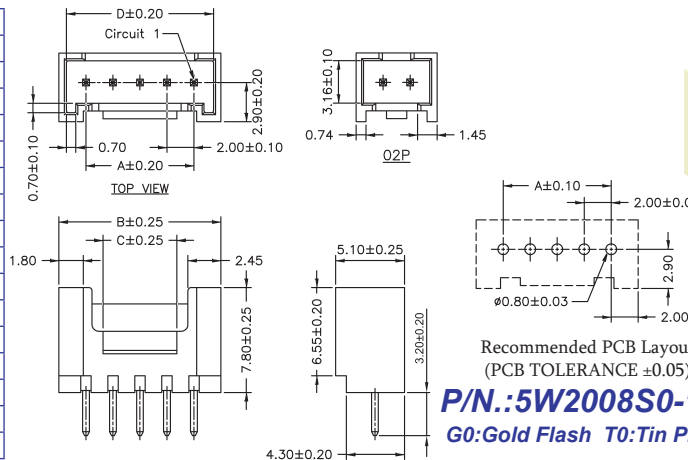


Recommended PCB Layout  
 (PCB TOLERANCE ±0.05)

P/N.:5W2008R0-1XXXXWXU\*01  
 T0:Tin Plated G0:Gold Flash B:Bag H:Reel W/O Cap Optional

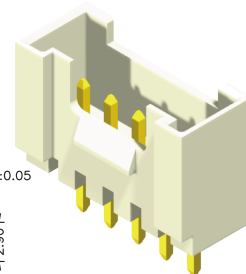


No. of Contacts	Dimensions			
	A	B	C	D
02	2.00	6.00	1.50	4.90
03	4.00	8.00	1.46	6.90
04	6.00	10.00	3.46	8.90
05	8.00	12.00	5.46	10.90
06	10.00	14.00	7.46	12.90
07	12.00	16.00	9.46	14.90
08	14.00	18.00	11.46	16.90
09	16.00	20.00	13.46	18.90
10	18.00	22.00	15.46	20.90
11	20.00	24.00	17.46	22.90
12	22.00	26.00	19.46	24.90
13	24.00	28.00	21.46	26.90
14	26.00	30.00	23.46	28.90
15	28.00	32.00	25.46	30.90
16	30.00	34.00	27.46	32.90



Recommended PCB Layout  
 (PCB TOLERANCE ±0.05)

P/N.:5W2008S0-1XXXXWBU\*01  
 G0:Gold Flash T0:Tin Plated Optional



# CONNECTORS MANUFACTURER

Old P/N.:2009 Series

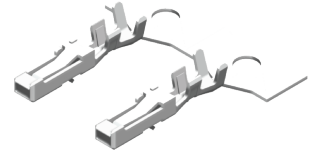
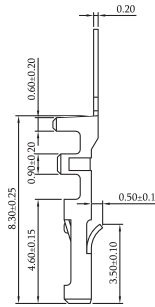
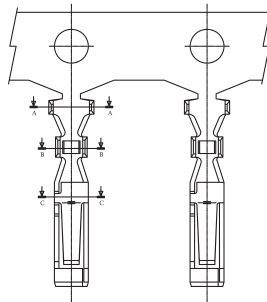
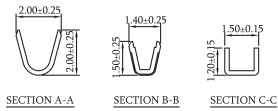
## 2.0mm 2009 Series Female & Male Terminal / Female & Male Housing

### Specifications

Current Rating: 2A AC, DC  
 Voltage Rating: 125V AC, DC  
 Temperature Range: -25°C to +85°C  
 Contact Resistance: 20mΩ Max  
 Insulation Resistance: 1000MΩ Min  
 Withstanding Voltage: 500V AC/minute

### Material

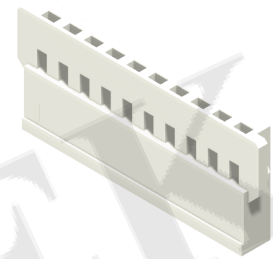
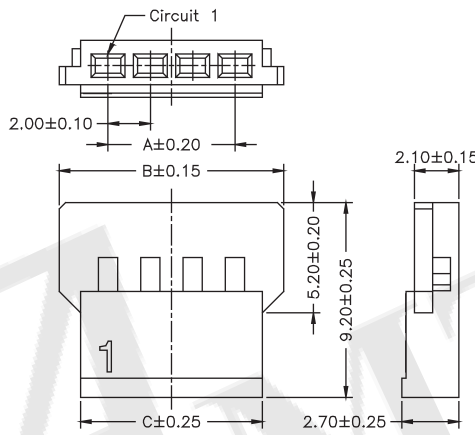
Housing: Nylon 66, UL 94V-0



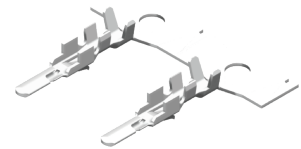
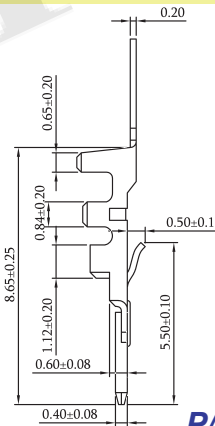
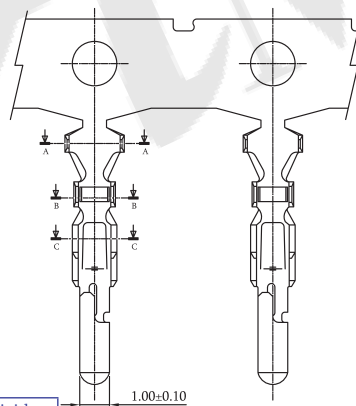
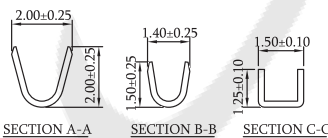
Wire Range	Insulation O.D.	Material	Finish
#24-#28	1.15mm(Max)	Brass	Tin Plated

P/N.:5T2009F-BT0R\*01  
 Optional

No. of Contacts	Dimensions		
	A	B	C
02	2.00	6.60	4.60
03	4.00	8.60	6.60
04	6.00	10.60	8.60
05	8.00	12.60	10.60
06	10.00	14.60	12.60
07	12.00	16.60	14.60
08	14.00	18.60	16.60
09	16.00	20.60	18.60
10	18.00	22.60	20.60
11	20.00	24.60	22.60
12	22.00	26.60	24.60
13	24.00	28.60	26.60



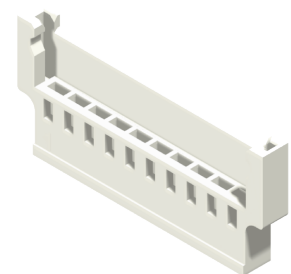
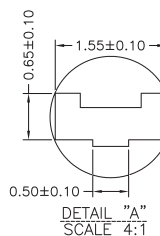
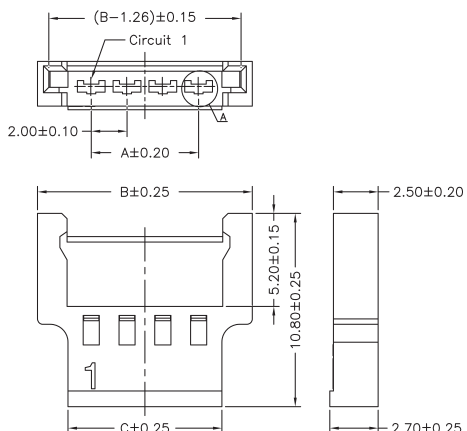
P/N.:5H2009F0-1XXWBL00\*01  
 Optional



Wire Range	Insulation O.D.	Material	Finish
#24-#28	1.15mm(Max)	Brass	Tin Plated

P/N.:5T2009M-BT0R\*01  
 Optional

No. of Contacts	Dimensions		
	A	B	C
02	2.00	8.00	4.60
03	4.00	10.00	6.60
04	6.00	12.00	8.60
05	8.00	14.00	10.60
06	10.00	16.00	12.60
07	12.00	18.00	14.60
08	14.00	20.00	16.60
09	16.00	22.00	18.60
10	18.00	24.00	20.60
11	20.00	26.00	22.60
13	24.00	30.00	26.60



P/N.:5H2009M0-1XXWBL00\*01  
 Optional

Housing Wafer Terminal

ROHS



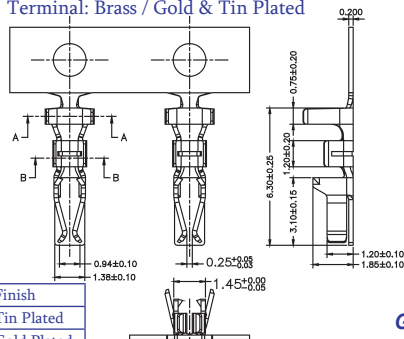
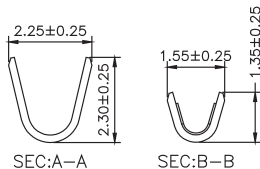
## 2.0mm 2011 Series Terminal / Housing / Wafer SMT & Right Angle & Straight Type

### Specifications

Current Rating: 2A AC, DC  
 Voltage Rating: 250V AC, DC  
 Temperature Range: -25°C to +85°C  
 Contact Resistance: 30mΩ Max  
 Insulation Resistance: 1000MΩ Min  
 Withstanding Voltage: 800V AC/minute

### Material

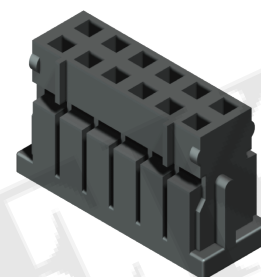
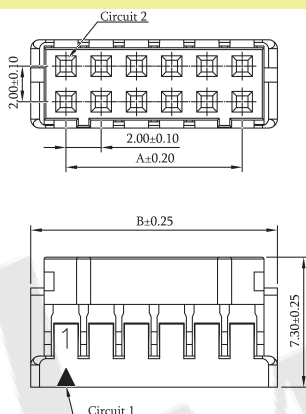
Housing: Nylon 66, UL 94V-0  
 Wafer: 5W2011R/S: Nylon 66, UL 94V-0  
 5W2011GX: Nylon 6T, UL 94V-0  
 Terminal: Brass / Gold & Tin Plated



Part No.	Wire Range	Insulation O.D.	Material	Finish
5T2011N-PT0	#22-#30	1.45mm(Max)	Phosphor Bronze	Tin Plated
5T2011N-PG0				Gold Plated

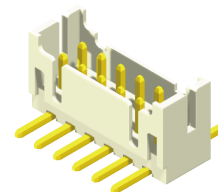
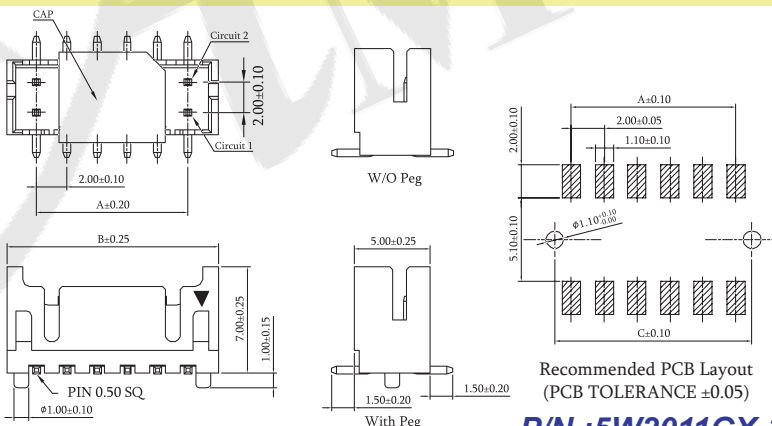
**P/N.:5T2011N-PXXR\*01**  
 G0:Gold Flash T0:Tin Plated   
 Optional

No. of Contacts	Dimensions		No. of Contacts	Dimensions	
	A	B		A	B
2x02	2.00	6.00	2x12	22.00	26.00
2x03	4.00	8.00	2x13	24.00	28.00
2x04	6.00	10.00	2x14	26.00	30.00
2x05	8.00	12.00	2x15	28.00	32.00
2x06	10.00	14.00	2x16	30.00	34.00
2x07	12.00	16.00	2x17	32.00	36.00
2x08	14.00	18.00	2x18	34.00	38.00
2x09	16.00	20.00	2x19	36.00	40.00
2x10	18.00	22.00	2x20	38.00	42.00
2x11	20.00	24.00	---	---	---



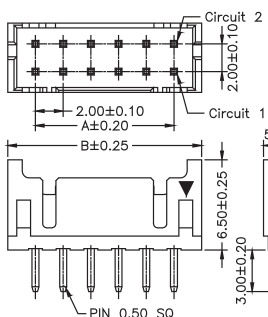
**P/N.:5H2011N0-2XXBBL00\*01**  
 Optional

No. of Contacts	Dimensions		
	A	B	C
2x02	2.00	6.00	4.00
2x03	4.00	8.00	6.00
2x04	6.00	10.00	8.00
2x05	8.00	12.00	10.00
2x06	10.00	14.00	12.00
2x07	12.00	16.00	14.00
2x08	14.00	18.00	16.00
2x09	16.00	20.00	18.00
2x10	18.00	22.00	20.00
2x11	20.00	24.00	22.00
2x12	22.00	26.00	24.00
2x13	24.00	28.00	26.00
2x14	26.00	30.00	28.00
2x15	28.00	32.00	30.00
2x16	30.00	34.00	32.00
2x17	32.00	36.00	34.00
2x18	34.00	38.00	36.00
2x19	36.00	40.00	38.00
2x20	38.00	42.00	40.00

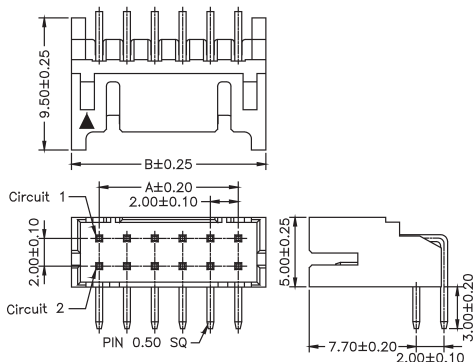


Recommended PCB Layout  
 (PCB TOLERANCE  $\pm 0.05$ )

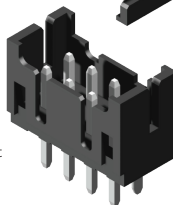
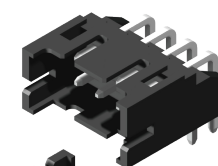
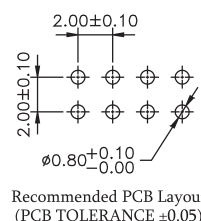
**P/N.:5W2011GX-2XXG0WRU\*01**  
 Optional



5W2011S0-XT0BBLA01



5W2011R0-XT0BBLA01



**P/N.:5W2011R0-2XXT0BAL\*01**  
**5W2011S0-2XXT0BBL\*01**  
 Optional

# CONNECTORS MANUFACTURER

Old P/N.:2013 Series

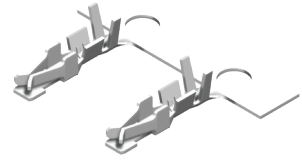
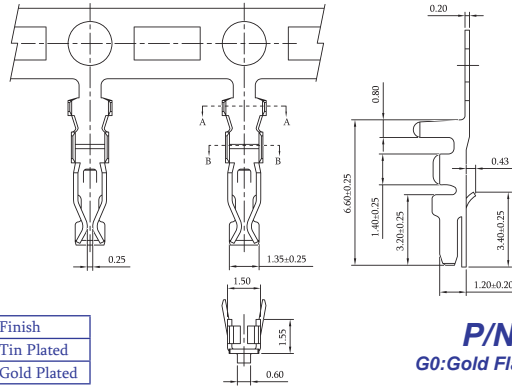
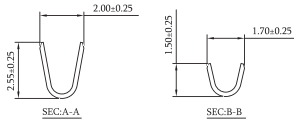
## 2.0mm 2013 Series Terminal / Housing / Wafer Right Angle & Straight Type

### Specifications

Current Rating: 3A AC, DC  
 Voltage Rating: 250V AC, DC  
 Temperature Range: -25°C to +85°C  
 Contact Resistance: 20mΩ Max  
 Insulation Resistance: 1000MΩ Min  
 Withstanding Voltage: 800V AC/minute

### Material

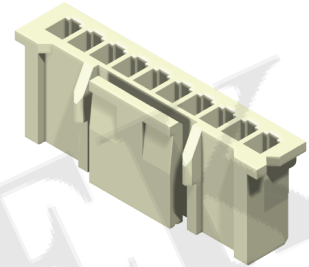
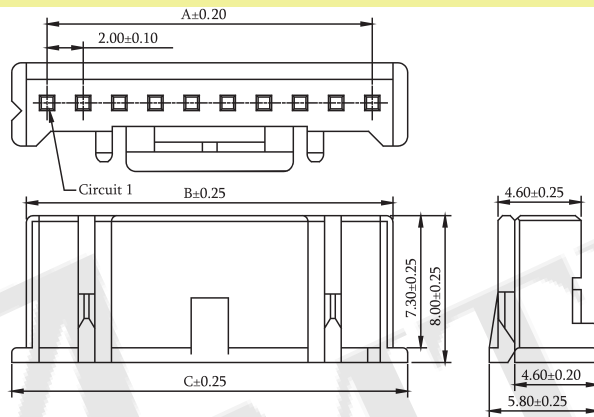
Housing / Wafer: Nylon 66, UL 94V-0  
 Terminal: Brass / Tin or Gold Plated



Part No.	Wire Range	Insulation O.D.	Material	Finish
5T2013N-PT0	#22-#28	1.5mm(Max)	Phosphor Bronze	Tin Plated
5T2013N-PG0				Gold Plated

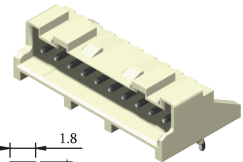
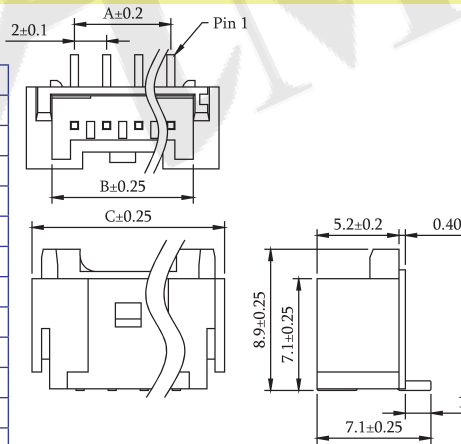
**P/N.:5T2013N-PXXR\*01**  
 G0:Gold Flash T0:Tin Plated  
 Optional

No. of Contacts	Dimensions		
	A	B	C
02	2.00	4.30	6.00
03	4.00	6.30	8.00
04	6.00	8.30	10.00
05	8.00	10.30	12.00
06	10.00	12.30	14.00
07	12.00	14.30	16.00
08	14.00	16.30	18.00
09	16.00	18.30	20.00
10	18.00	20.30	22.00
11	20.00	22.30	24.00
12	22.00	24.30	26.00
13	24.00	26.30	28.00
14	26.00	28.30	30.00
15	28.00	30.30	32.00
16	30.00	32.30	34.00

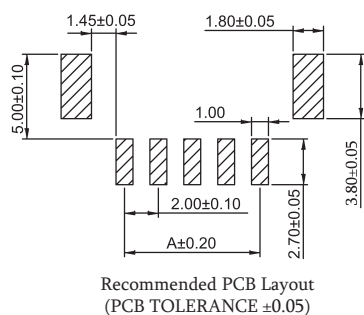


**P/N.:5H2013N0-1XXWBL00\*01**  
 Optional

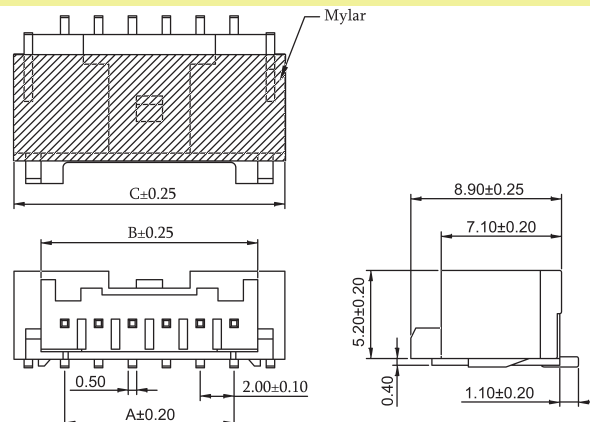
No. of Contacts	Dimensions		
	A	B	C
02	2.00	4.50	8.00
03	4.00	6.50	10.00
04	6.00	8.50	12.00
05	8.00	10.50	14.00
06	10.00	12.50	16.00
07	12.00	14.50	18.00
08	14.00	16.50	20.00
09	16.00	18.50	22.00
10	18.00	20.50	24.00
11	20.00	22.50	26.00
12	22.00	24.50	28.00
13	24.00	26.50	30.00
14	26.00	28.50	32.00
15	28.00	30.50	34.00
16	30.00	32.50	36.00



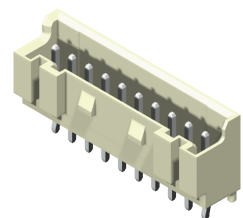
Recommended PCB Layout  
 (PCB TOLERANCE ±0.05)  
**P/N.:5W2013G0-1XXG0WBU\*01**  
 Optional



Recommended PCB Layout  
 (PCB TOLERANCE ±0.05)



**P/N.:5W2013H0-1XXT0WHU\*01**  
 Optional



Housing Wafer Terminal

ROHS

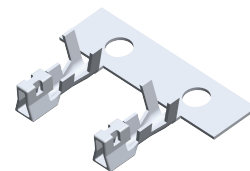
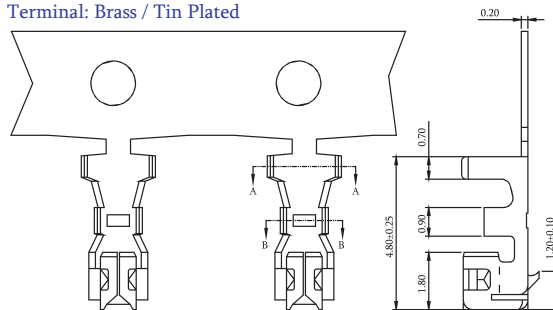
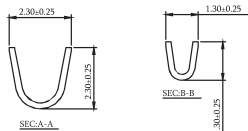
## 2.0mm 2015 Series Terminal / Housing / Wafer Right Angle & Straight Type

### Specifications

Current Rating: 3A AC, DC  
 Voltage Rating: 250V AC, DC  
 Temperature Range: -40°C to +105°C  
 Contact Resistance: 30MΩ Max  
 Insulation Resistance: 1000MΩ Min  
 Withstanding Voltage: 1000V AC/minute

### Material

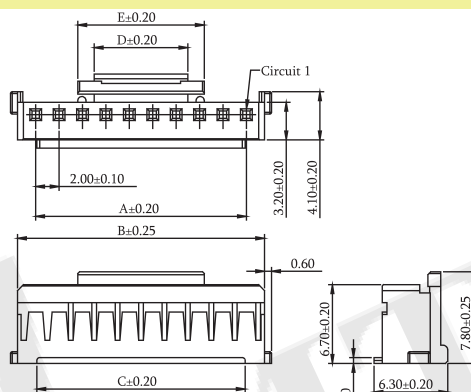
Housing / Wafer: Nylon 66, UL 94V-0  
 Terminal: Brass / Tin Plated



Part No.	Wire Range	Insulation O.D.	Material	Finish
5T2015N-PT0	#24-#30	1.40mm(Max)	Phosphor Bronze	Tin over Nickel
5T2015N-PG0				Gold over Nickel

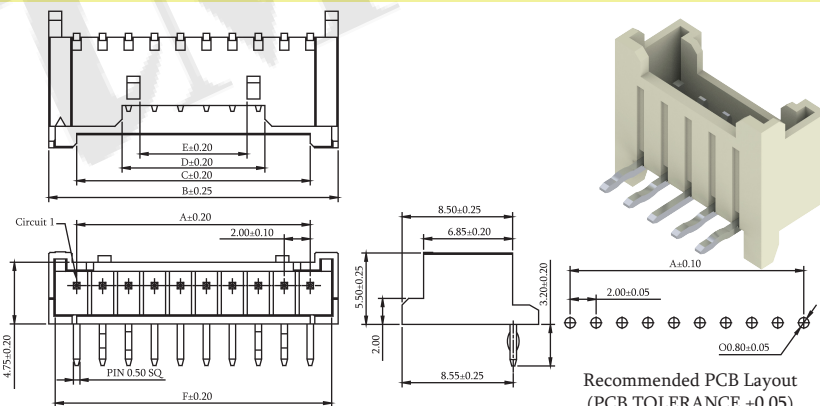
**P/N.:5T2015N-PXXR\*01**  
 G0:Gold Flash T0:Tin Plated Optional

No. of Contacts	Dimensions				
	A	B	C	D	E
04	6.00	9.10	5.80	4.00	6.40
05	8.00	11.10	7.80	4.00	6.40
06	10.00	13.10	9.80	4.00	6.40
07	12.00	15.10	11.80	4.00	6.40
08	14.00	17.10	13.80	8.00	10.80
09	16.00	19.10	15.80	8.00	10.80
10	18.00	21.10	17.80	8.00	10.80
11	20.00	23.10	19.80	8.00	10.80
12	22.00	25.10	21.80	8.00	10.80
13	24.00	27.10	23.80	8.00	10.80
14	26.00	29.10	25.80	8.00	10.80
15	28.00	31.10	27.80	8.00	10.80
16	30.00	33.10	29.80	8.00	10.80
17	32.00	35.10	31.80	8.00	10.80
18	34.00	37.10	33.80	8.00	10.80
19	36.00	39.10	35.80	8.00	10.80
20	38.00	40.10	37.80	8.00	10.80



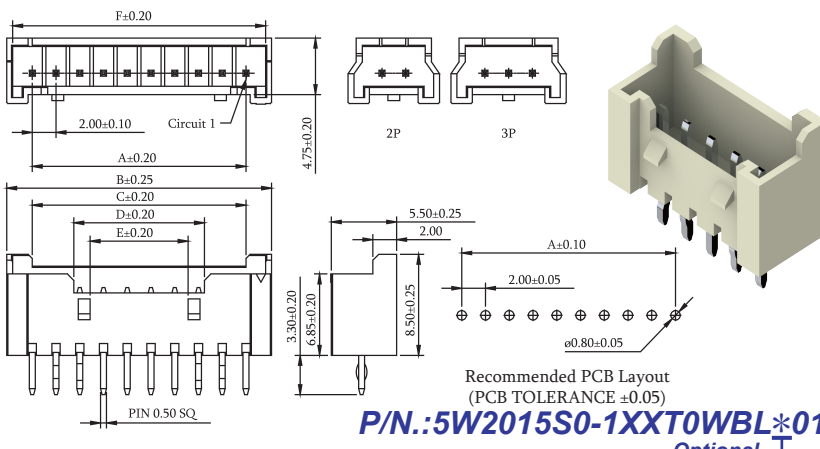
**P/N.:5H2015N0-1XXWBL00\*01**  
 Optional Optional

No. of Contacts	Dimensions					
	A	B	C	D	E	F
04	6.00	10.30	6.00	7.00	4.25	9.30
05	8.00	12.30	8.00	7.00	4.25	11.30
06	10.00	14.30	10.00	7.00	4.25	13.30
07	12.00	16.30	12.00	7.00	4.25	15.30
08	14.00	18.30	14.00	11.00	8.25	17.30
09	16.00	20.30	16.00	11.00	8.25	19.30
10	18.00	22.30	18.00	11.00	8.25	21.30
11	20.00	24.30	20.00	11.00	8.25	23.30
12	22.00	26.30	22.00	11.00	8.25	25.30
13	24.00	28.30	24.00	11.00	8.25	27.30
14	26.00	30.30	26.00	11.00	8.25	29.30
15	28.00	32.30	28.00	11.00	8.25	31.30
16	30.00	34.30	30.00	11.00	8.25	33.30
17	32.00	36.30	32.00	11.00	8.25	35.30
18	34.00	38.30	34.00	11.00	8.25	37.30
19	36.00	40.30	36.00	11.00	8.25	39.30
20	38.00	42.30	38.00	11.00	8.25	41.30



**P/N.:5W2015R0-1XXT0WBL\*01**  
 Recommended PCB Layout (PCB TOLERANCE ±0.05)  
 Optional Optional

No. of Contacts	Dimensions					
	A	B	C	D	E	F
02	2.00	7.70	2.00	4.10	---	5.30
03	4.00	9.70	4.00	6.10	---	7.30
04	6.00	10.30	6.00	7.00	4.25	9.30
05	8.00	12.30	8.00	7.00	4.25	11.30
06	10.00	14.30	10.00	7.00	4.25	13.30
07	12.00	16.30	12.00	7.00	4.25	15.30
08	14.00	18.30	14.00	11.00	8.25	17.30
09	16.00	20.30	16.00	11.00	8.25	19.30
10	18.00	22.30	18.00	11.00	8.25	21.30
11	20.00	24.30	20.00	11.00	8.25	23.30
12	22.00	26.30	22.00	11.00	8.25	25.30
13	24.00	28.30	24.00	11.00	8.25	27.30
14	26.00	30.30	26.00	11.00	8.25	29.30
15	28.00	32.30	28.00	11.00	8.25	31.30
16	30.00	34.30	30.00	11.00	8.25	33.30
17	32.00	36.30	32.00	11.00	8.25	35.30
18	34.00	38.30	34.00	11.00	8.25	37.30
19	36.00	40.30	36.00	11.00	8.25	39.30
20	38.00	42.30	38.00	11.00	8.25	41.30



**P/N.:5W2015S0-1XXT0WBL\*01**  
 Recommended PCB Layout (PCB TOLERANCE ±0.05)  
 Optional Optional