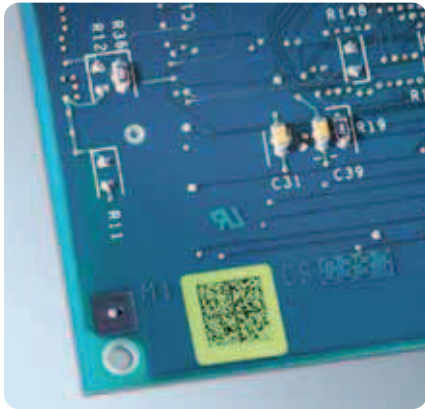
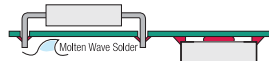
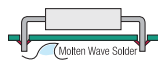


Circuit Board and Component Identification – BBP11 and BP-4000 Series Printers



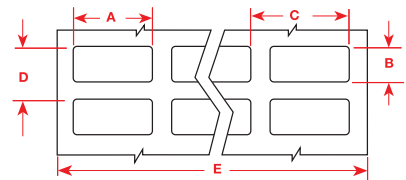
B-652 polyimide withstands extremely high temperatures. Ideal for marking the underside of printed circuit board and for surface-mount applications. Remains legible after contact with solder, flux and cleaning solvents

Desk-top Printer Series Circuit Board Process Chart



	Through Hole Technology		Surface Mount Technology (SMT)		After Process
	Top	Bottom	Top or Bottom		
B-652	● Yes	● Yes	● Yes		● Yes
B-8423	▲ Yes*	✗ No	✗ No		● Yes

- * In extreme high temperatures, testing of these materials is recommended
- Yes, this material will work in this application
- ✗ No, this material does not work with this application
- ▲ In extreme high temperatures, testing of these materials is recommended
- (T) Tab to increase printable zone in small BP-4000 labels



B-652 High Temperature Amber Polyimide B-8423 Permanent White Polyester

Order Reference	Pieces per Package	Material	Colour	Labels Per Row	Label Width (mm) A	Labels Height (mm) B	Horizontal Repeat (mm) C	Vertical Repeat (mm) D	Web Width (mm) E	Recommended Ribbon
▲ BPT-1-652-2.5	2 500	Polyimide	Amber	5	19.05	6.35		9.35	108.00	RGR
▲ BPT-1-8423-2.5	2 500	Polyester	White	5	19.05	6.35		9.35	108.00	RPR
▲ BPT-1-652-2.5(T)	2 500	Polyimide	Amber	5	19.05	6.35		11.40	108.00	RGR
▲ BPT-1-8423-2.5(T)	2 500	Polyester	White	5	19.05	6.35		11.40	108.00	RPR
▲ BPT-4-652-2.5	2 500	Polyimide	Amber	2	38.10	6.35	50.10	9.35	108.00	RGR
▲ BPT-4-8423-2.5	2 500	Polyester	White	2	38.10	6.35	50.10	9.35	108.00	RPR
▲ BPT-4-652-2.5(T)	2 500	Polyimide	Amber	2	38.10	6.35	50.10	11.35	108.00	RGR
▲ BPT-4-8423-2.5(T)	2 500	Polyester	White	2	38.10	6.35	50.10	11.35	108.00	RPR
▲ BPT-11-652-2.5	2 500	Polyimide	Amber	15	6.35	6.35		9.35	108.00	RGR
▲ BPT-11-8423-2.5	2 500	Polyester	White	15	6.35	6.35		9.35	108.00	RPR
▲ BPT-11-652-2.5(T)	2 500	Polyimide	Amber	15	6.35	6.35		11.35	108.00	RGR
▲ BPT-11-8423-2.5(T)	2 500	Polyester	White	15	6.35	6.35		11.35	108.00	RPR
▲ BPT-12-652-2.5	2 500	Polyimide	Amber	7	12.70	11.10		14.10	108.00	RGR
▲ BPT-12-8423-2.5	2 500	Polyester	White	7	12.70	11.10		14.10	108.00	RPR
▲ BPT-13-652-2.5	2 500	Polyimide	Amber	3	31.75	6.35	34.75	9.35	108.00	RGR
▲ BPT-13-8423-2.5	2 500	Polyester	White	3	31.75	6.35	34.75	9.35	108.00	RPR
▲ BPT-13-652-2.5(T)	2 500	Polyimide	Amber	3	31.75	6.35	34.75	11.35	108.00	RGR
▲ BPT-13-8423-2.5(T)	2 500	Polyester	White	3	31.75	6.35	34.75	11.35	108.00	RPR
▲ BPT-14-652-2.5	2 500	Polyimide	Amber	5	16.51	5.08	19.51	8.08	108.00	RGR
▲ BPT-14-8423-2.5	2 500	Polyester	White	5	16.51	5.08	19.51	8.08	108.00	RPR
▲ BPT-14-652-2.5(T)	2 500	Polyimide	Amber	5	16.51	5.08	19.51	10.08	108.00	RGR
▲ BPT-14-8423-2.5(T)	2 500	Polyester	White	5	16.51	5.08	19.51	10.08	108.00	RPR
▲ BPT-38-652-2.5	2 500	Polyimide	Amber	9	9.53	9.53		12.53	108.00	RGR
▲ BPT-38-8423-2.5	2 500	Polyester	White	9	9.53	9.53		12.53	108.00	RPR
▲ BPT-G2-8423-YL	2 500	Polyester	Yellow	4	20.00	8.00	23.00	15.00	108.00	RPR
▲ BPT-G3-8423-YL	2 500	Polyester	Yellow	5	15.00	9.00	18.00	16.00	108.00	RPR