

ULTRA MICRO POWER SYSTEM

(2.00 mm) .0787" PITCH



FEATURES & BENEFITS

- Up to 18 A per blade (1 blade powered)
- Design flexibility as a power-only system or a two-piece system for power/signal applications
- Use with Samtec's high-speed connector systems for a unique power/signal system (see chart page 197)
- Choice of 2 to 10 positions
- 5 mm to 12 mm stack heights available (up to 20 mm in development)
- Tin or 10 μ" Gold plated power blades; 30 μ" Gold plating available to meet specific regulations
- Optional weld tabs
- Cable-to-board and cable-to-cable systems in development

KEY SPECIFICATIONS

PITCH	STACK HEIGHTS	INSULATOR MATERIAL	CONTACT MATERIAL	PLATING	OPERATING TEMP RANGE	VOLTAGE RATING	LEAD-FREE SOLDERABLE
2.00 mm	5, 6, 7, 8 and 10 mm	Black LCP	Copper Alloy	Sn or Au over 50 μ" (1.27 μm) Ni	-55 °C to +105 °C with Tin -55 °C to +125 °C with Gold	460 VAC/ 650 VDC	Yes

UMPT/UMPS compared to another small form factor power solution

Terminals shown actual size at 4 positions



mPower®



Traditional Power Solutions

CREEPAGE & CLEARANCE

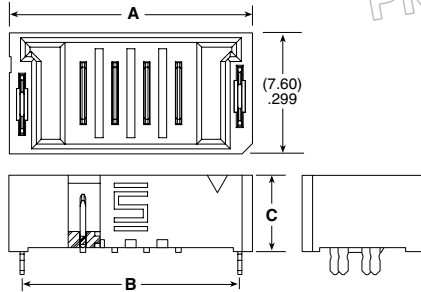
UMPT/UMPS	
CREEPAGE	2.20 mm
CLEARANCE	1.65 mm

Selectively loading contacts achieves customer specific creepage and clearance requirements.

ULTRA MICRO POWER TERMINAL

UMPT	NO. OF POSITIONS	LEAD STYLE	PLATING OPTION	VT	SM	WELD TAB	LATCH OPTION	K
	-02, -03, -04, -05, -06, -07, -08, -09, -10	-01.5 = (01.5 mm) .059" -02.5 = (02.5 mm) .098" -06.5 = (06.5 mm) .256" -07.5 = (07.5 mm) .295" -12.5 = (12.5 mm) .492"	-L = 10 μ" (0.25 μm) Gold on contact, Matte Tin on tail -G = 10 μ" (0.25 μm) Gold on contact, Gold flash on tail -T = Matte Tin			(Leave blank for no weld tab) -WT = Weld Tab Through-hole	(Leave blank for no latch) (Only available on -02.5 lead style) (Weld tab required) -P = Plastic top latch -M = Metal side latches	-K = Polyimide Pick & Place Pad

UMPT Board Mates:
UMPS
Cable Mates:
UMPC*
(*UMPT requires -P or -M option for mating)



UMPT-04-01.5-X-VT-SM-WT SHOWN

-02.5, -06 thru -10, -P & -M PRELIMINARY

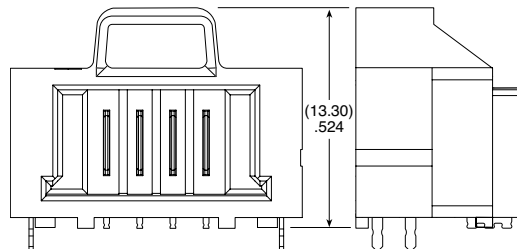
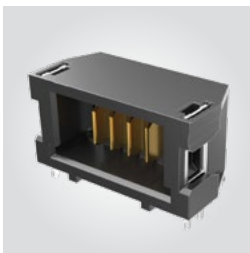
LEAD STYLE	C	NO. OF POSITIONS	
		A (-P & No latch)	B (-M latch)
-02	(4.80) .189	(11.30) .445	(9.70) .382
-03	(5.80) .228	(13.30) .524	(11.70) .460
-04	(9.55) .376	(15.30) .602	(13.70) .539
-05	(10.80) .425	(17.30) .681	(15.70) .618
-06	(15.80) .622	(19.30) .760	(17.70) .697
-07		(21.30) .839	(19.70) .776
-08		(23.30) .917	(21.70) .854
-09		(25.30) .996	(23.70) .933
-10		(27.30) 1.075	(25.70) 1.012

Note: Some lengths, styles and options are non-standard, non-returnable.

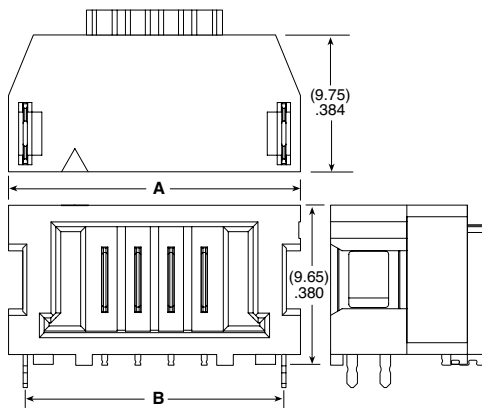
View complete specifications at: samtec.com?UMPT

UMPT	NO. OF POSITIONS	01	PLATING OPTION	RA	WELD TAB	LATCH OPTION	"X"R
	-02, -03, -04, -05, -06, -07, -08, -09, -10		-L = 10 μ" (0.25 μm) Gold on contact, Matte Tin on tail -S = 30 μ" (0.76 μm) Gold on contact, Matte Tin on tail -T = Matte Tin		-WT = Weld Tab Through-hole	(Leave blank for no latch) -P = Plastic top latch -M = Metal side latches	-TR = Tape & Reel -FR = Full Reel Tape & Reel (must order max. quantity per reel; contact Samtec for quantity breaks)

UMPT-RA Board Mates:
UMPS
Cable Mates:
UMPC*
(*UMPT requires -P or -M option for mating)



UMPT-04-01-X-RA-WT-P SHOWN



UMPT-04-01-X-RA-WT-M SHOWN

-P & -M PRELIMINARY

NO. OF POSITIONS	A	B	
		(-P & No latch)	(-M latch)
-02	(13.60) .535	(11.10) .437	(11.55) .455
-03	(15.60) .614	(13.10) .516	(13.55) .533
-04	(17.60) .693	(15.10) .594	(15.55) .612
-05	(19.60) .772	(17.10) .673	(17.55) .691
-06	(21.60) .850	(19.10) .752	(19.55) .770
-07	(23.60) .929	(21.10) .831	(21.55) .848
-08	(25.60) 1.008	(23.10) .909	(23.55) .927
-09	(27.60) 1.087	(25.10) .988	(25.55) 1.006
-10	(29.60) 1.165	(27.10) 1.067	(27.55) 1.085

Note: Some lengths, styles and options are non-standard, non-returnable.

View complete specifications at: samtec.com?UMPT-RA