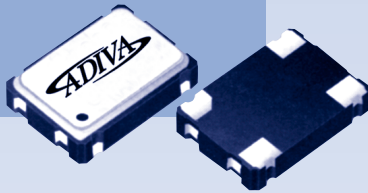


# Voltage Controlled Clock OSC.

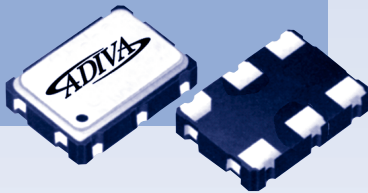
Surface Mount

ADVCXOG Series (G4, G6)

## ADVCXOG4



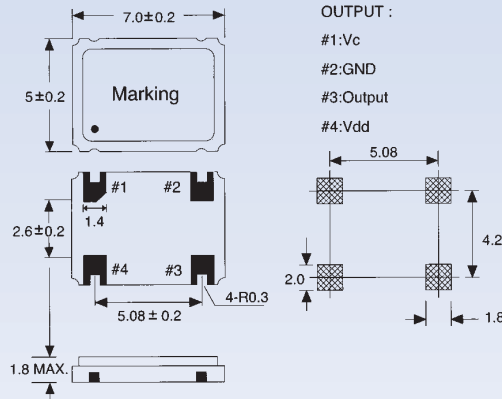
## ADVCXOG6



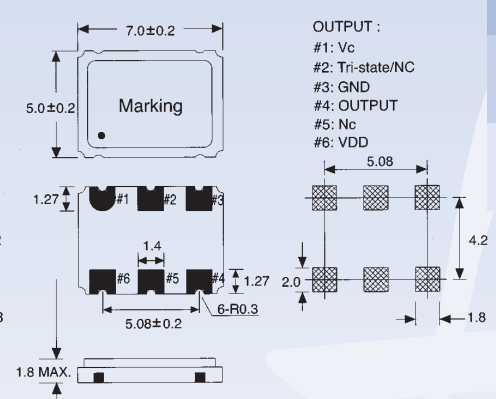
### FEATURES

- Seam welding
- Superior quality
- Low power consumption
- Custom requirement available
- Application: Set top box, ADSL modem.

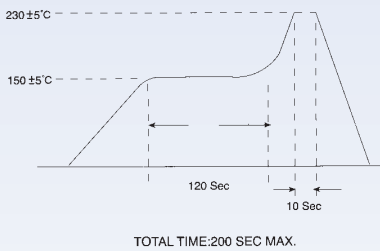
ADVCXOG4 (unit: mm)



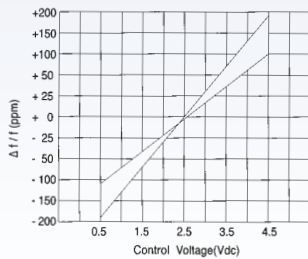
ADVCXOG6 (unit: mm)



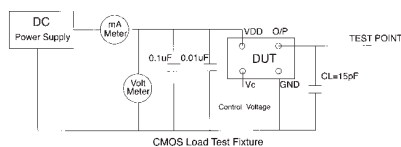
### SOLDERING REFLOW PROFILE



### FREQUENCY/MODULATION VOLTAGE CHARACTERISTICS



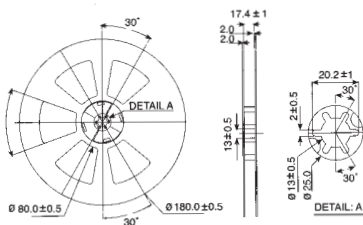
### TEST CIRCUIT



CMOS Load Test Fixture

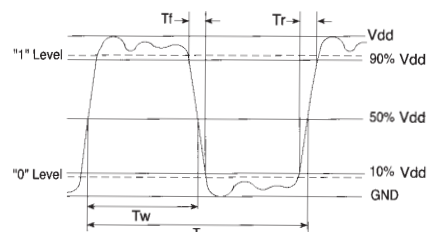
\*A 0.1µF tantalum capacitor and 0.01µF chip ceramic capacitor should be connected on the VDD terminal is recommended for the application.

### REEL PACKING (unit: mm)



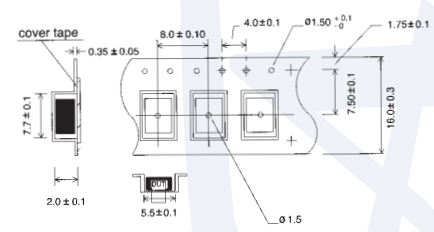
Tape reel 1000pcs/reel

### OUTPUT WAVEFORM FOR CMOS



Symmetry=(Tw/T)\*100% measured at 50% Vdd

### TAPE SPECIFICATIONS



SEE PAGE 48 FOR PART NUMBERING GUIDE

# Voltage Controlled Clock OSC.

Surface Mount & Thru Hole

ADVCXO Series



Package Type	ADVCXOG4	pg49	ADVCXOI	pg50
	ADVCXOG6	pg49	ADVCXOH	pg52
Frequency Stability	±100 ppm	A	±25 ppm	D
	±50 ppm	B	Custom	E
	±30 ppm	C		
Duty Cycle	45/55%	5	40/60%	6
Deviation	±100 ppm min	A	±50 ppm min	C
	±75 ppm min	B	±200 ppm min	D
Linearity	20%	A	10%	C
	15%	B	None	Blank
Output	TTL	A	CMOS Compatible	C
	CMOS	B		

### EXAMPLE

