

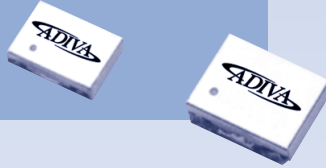
Voltage Controlled Clock OSC.

Surface Mount

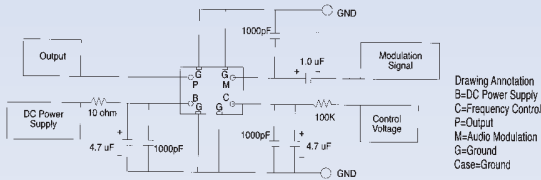
ADVCOC & ADVCOD

FEATURES

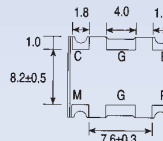
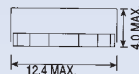
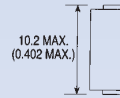
- Low power consumption
- High C/N and S/N
- Custom requirement available
- Application: Cellular/PCS telephone, SATCOM, Military, GPS receivers, navigation, etc.



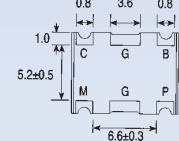
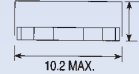
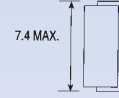
TEST CIRCUIT



ADVCOC (unit: mm)



ADVCOD (unit: mm)



STANDARD SPECIFICATIONS

APPLICATION	OPERATING FREQUENCY RANGE (MHz)	CONTROL VOLTAGE (V)	CONTROL VOLTAGE SENSITIVITY (MHz/V)	SUPPLY VOLTAGE (V)	POWER CONSUMPTION (mA max.)	OUTPUT LEVEL (dBm)	C/N (dBc/Hz)	S/N (dB)	AUDIO MODULATION SENSITIVITY (KHz/Vpp)	NOTE
E-AMPS	TX 836.5 ±12.5	1.0 ~ 4.0	≥ 9	4.2 ±0.25	7.0	≥ -5	110 (25)	50	15 ±20%	1
	836.5 ±12.5	0.3 ~ 2.7	≥ 13	3.0 ±0.2	7.5	≥ -6	109 (25)	50	15 ±20%	1
	RX 926.5 ±12.5	1.0 ~ 4.0	≥ 9	4.2 ±0.25	7.0	≥ -5	110 (25)	45	-	1
	964.5 ±12.5	1.0 ~ 4.0	≥ 11	4.2 ±0.25	8.0	≥ -5	108 (25)	45	-	1
E-TACS	TX 888.5 ±16.5	1.0 ~ 4.0	≥ 11	4.2 ±0.25	7.5	≥ -5	109 (25)	50	10 ±20%	1
	978.5 ±16.5	1.0 ~ 4.0	≥ 11	4.2 ±0.25	8.0	≥ -6	108 (25)	45	-	1
	RX 1016.5 ±16.5	1.0 ~ 4.0	≥ 11	4.2 ±0.25	8.0	≥ -6	108 (25)	45	-	1
	1025.5 ±16.5	1.0 ~ 4.0	≥ 11	4.2 ±0.25	8.0	≥ -6	108 (25)	45	-	1
NMT/	TX 902.5 ±12.5	1.0 ~ 4.0	≥ 9	4.2 ±0.25	7.0	≥ -5	110 (25)	50	5 ±20%	1
GSM	RX 1018.5 ±12.5	1.0 ~ 4.0	≥ 11	4.2 ±0.25	8.0	≥ -6	108 (25)	45	-	1
	885.5 ±29.5	1.0 ~ 4.0	≥ 20	4.2 ±0.25	8.0	≥ -6	100 (10)	45	-	1
CT1	TX 886.0 ±1.0	1.0 ~ 4.0	≥ 2	4.2 ±0.25	7.5	≥ -3	110 (25)	45	10 ±20%	1, 2
	931.0 ±10	1.0 ~ 4.0	≥ 2	4.2 ±0.25	7.5	≥ -3	110 (25)	45	10 ±20%	1, 2
CT2	TX 886.0 ±12.5	1.0 ~ 4.0	≥ 9	4.2 ±0.25	7.5	≥ -3	110 (25)	45	10 ±20%	1, 2
	716.0 ±12.5	1.0 ~ 4.0	≥ 9	4.2 ±0.25	7.5	≥ -3	110 (25)	45	10 ±20%	1
	716.0 ±12.5	0.5 ~ 2.5	≥ 11	3.0 ±0.2	7.0	≥ -6	110 (25)	45	10 ±20%	1
CEPT	TX 914.5 ±0.5	1.0 ~ 4.0	≥ 2	4.2 ±0.25	7.5	≥ -3	110 (25)	45	10 ±20%	1, 2
	959.5 ±0.5	1.0 ~ 4.0	≥ 2	4.2 ±0.25	7.5	≥ -3	110 (25)	45	10 ±20%	1, 2
	RX 856.4 ±0.5	1.0 ~ 4.0	≥ 2	4.2 ±0.25	7.5	≥ -3	110 (25)	45	-	1
GPS	901.4 ±0.5	1.0 ~ 4.0	≥ 2	4.2 ±0.25	7.5	≥ -3	110 (25)	45	-	1
	RX 1402.0 ±2.0	0.5 ~ 2.5	≥ 4	3.0 ±0.3	10.0	≥ -5	90 (10)	-	-	1
PHS	RX 1665.0 ±15.0	0.5 ~ 2.5	≥ 20	3.0 ±0.25	10.0	≥ -6	95 (25)	-	-	1
DECT	RX 1835.0 ±65.0	0.5 ~ 2.5	≥ 65	3.2 ±0.25	15.0	≥ -5	100 (25)	-	-	1
WLAN	RX 2260.0 ±70.0	0.5 ~ 4.5	≥ 35	4.5 ±0.25	20.0	≥ -5	92 (10)	-	-	1

Note: 1. C/N Conditions: () = offset in KHz from carrier. S/N Conditions: 1 KHz signal, ±3 KHz dev., 0.3 ~ 3 KHz B.W. 2. 3V (Supply Voltage) available.

SEE PAGE 48 FOR PART NUMBERING GUIDE