

# Voltage Controlled Clock

Thru Hole

ADVCOA-D Series

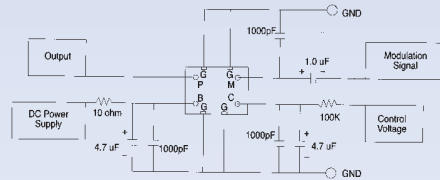
## ADVCOA & ADVCOB

### FEATURES

- Low power consumption
- High C/N and S/N
- Custom requirement available
- Application: Cellular/PCS telephony, SATCOM, Military, GPS receivers, navigation, etc.



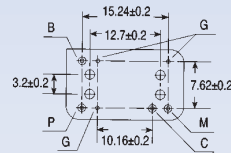
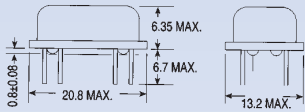
TEST CIRCUIT



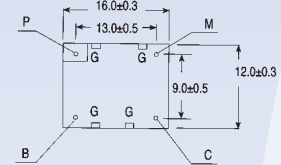
Drawing Annotation  
B=DC Power Supply  
C=Frequency Control  
P=Output  
M=Audio Modulation  
G=Ground  
Case=Ground



ADVCOA (unit: mm)



ADVCOB (unit: mm)



## STANDARD SPECIFICATIONS

APPLICATION	OPERATING FREQUENCY RANGE (MHz)	CONTROL VOLTAGE (V)	CONTROL VOLTAGE SENSITIVITY (MHz/V)	SUPPLY VOLTAGE (V)	POWER CONSUMPTION (mA max.)	OUTPUT LEVEL (dBm)	C/N (dBc/Hz)	S/N (dB)	AUDIO MODULATION SENSITIVITY (KHz/Vpp)	NOTE	
E-AMPS	TX	836.5 ±12.5	1.0 ~ 4.0	≥ 9	4.2 ±0.25	7.0	≥ -5	110 (25)	50	15 ±20%	1
		836.5 ±12.5	0.3 ~ 2.7	≥ 13	3.0 ±0.2	7.5	≥ -6	109 (25)	50	15 ±20%	1
	RX	926.5 ±12.5	1.0 ~ 4.0	≥ 9	4.2 ±0.25	7.0	≥ -5	110 (25)	45	-	1
		964.5 ±12.5	1.0 ~ 4.0	≥ 11	4.2 ±0.25	8.0	≥ -5	108 (25)	45	-	1
E-TACS	TX	888.5 ±16.5	1.0 ~ 4.0	≥ 11	4.2 ±0.25	7.5	≥ -5	109 (25)	50	10 ±20%	1
		978.5 ±16.5	1.0 ~ 4.0	≥ 11	4.2 ±0.25	8.0	≥ -6	108 (25)	45	-	1
	RX	1016.5 ±16.5	1.0 ~ 4.0	≥ 11	4.2 ±0.25	8.0	≥ -6	108 (25)	45	-	1
		1025.5 ±16.5	1.0 ~ 4.0	≥ 11	4.2 ±0.25	8.0	≥ -6	108 (25)	45	-	1
NMT/	TX	902.5 ±12.5	1.0 ~ 4.0	≥ 9	4.2 ±0.25	7.0	≥ -5	110 (25)	50	5 ±20%	1
GSM	RX	1018.5 ±12.5	1.0 ~ 4.0	≥ 11	4.2 ±0.25	8.0	≥ -6	108 (25)	45	-	1
		885.5 ±29.5	1.0 ~ 4.0	≥ 20	4.2 ±0.25	8.0	≥ -6	100 (10)	45	-	1
CT1	TX	886.0 ±1.0	1.0 ~ 4.0	≥ 2	4.2 ±0.25	7.5	≥ -3	110 (25)	45	10 ±20%	1, 2
		931.0 ±10	1.0 ~ 4.0	≥ 2	4.2 ±0.25	7.5	≥ -3	110 (25)	45	10 ±20%	1, 2
CT2	TX	886.0 ±12.5	1.0 ~ 4.0	≥ 9	4.2 ±0.25	7.5	≥ -3	110 (25)	45	10 ±20%	1, 2
		716.0 ±12.5	1.0 ~ 4.0	≥ 9	4.2 ±0.25	7.5	≥ -3	110 (25)	45	10 ±20%	1
CEPT	TX	716.0 ±12.5	0.5 ~ 2.5	≥ 11	3.0 ±0.2	7.0	≥ -6	110 (25)	45	10 ±20%	1
		914.5 ±0.5	1.0 ~ 4.0	≥ 2	4.2 ±0.25	7.5	≥ -3	110 (25)	45	10 ±20%	1, 2
	RX	959.5 ±0.5	1.0 ~ 4.0	≥ 2	4.2 ±0.25	7.5	≥ -3	110 (25)	45	10 ±20%	1, 2
856.4 ±0.5		1.0 ~ 4.0	≥ 2	4.2 ±0.25	7.5	≥ -3	110 (25)	45	-	1	
GPS	RX	901.4 ±0.5	1.0 ~ 4.0	≥ 2	4.2 ±0.25	7.5	≥ -3	110 (25)	45	-	1
		1402.0 ±2.0	0.5 ~ 2.5	≥ 4	3.0 ±0.3	10.0	≥ -5	90 (10)	-	-	1
PHS	RX	1665.0 ±15.0	0.5 ~ 2.5	≥ 20	3.0 ±0.25	10.0	≥ -6	95 (25)	-	-	1
DECT	RX	1835.0 ±65.0	0.5 ~ 2.5	≥ 65	3.2 ±0.25	15.0	≥ -5	100 (25)	-	-	1
WLAN	RX	2260.0 ±70.0	0.5 ~ 4.5	≥ 35	4.5 ±0.25	20.0	≥ -5	92 (10)	-	-	1

Note: 1. C/N Conditions: ( ) = offset in KHz from carrier. S/N Conditions: 1 KHz signal, ±3 KHz dev., 0.3 ~ 3 KHz B.W. 2. 3V (Supply Voltage) available.

SEE PAGE 46 FOR PART NUMBERING GUIDE

VCXO/VCO