

# Wound Chip Beads

Surface Mount

ADSMB2 Series



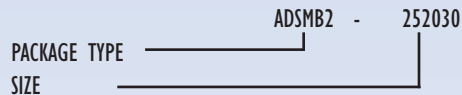
## ADSMB2



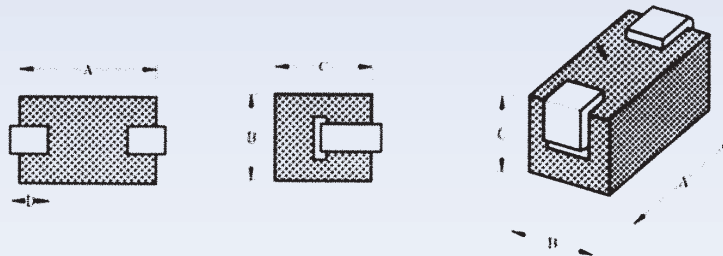
### FEATURES

- High resistance to heat and humidity
- Accurate dimensions for automatically mounted
- Applications: cellular phones, telecommunications systems, wireless communications equipment, and computer products

### PART NUMBERING GUIDE



Rectangular Ferrite Bead



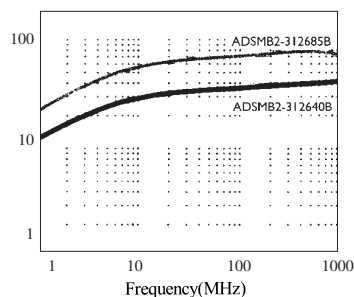
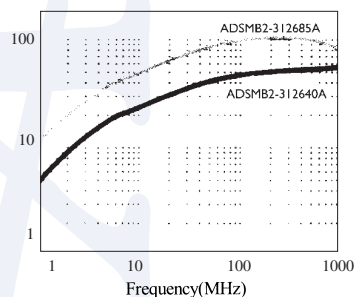
### STANDARD SPECIFICATIONS

| PACKAGE TYPE   | IMPEDANCE                 | IMPEDANCE                  | SIZE             |                 |                     |                    |
|----------------|---------------------------|----------------------------|------------------|-----------------|---------------------|--------------------|
|                | ( $\Omega$ )<br>at 25 MHz | ( $\Omega$ )<br>at 100 MHz | LENGTH<br>(A) mm | WIDTH<br>(B) mm | THICKNESS<br>(C) mm | TERMINAL<br>(D) mm |
| ADSMB2-252030  | 20 $\pm$ 20%              | 30 $\pm$ 20%               | 3.0 $\pm$ 0.15   | 2.5 $\pm$ 0.1   | 2.0 $\pm$ 0.1       | 1.15 $\pm$ 0.15    |
| ADSMB2-312640A | 30 -0                     | 47 $\pm$ 20%               | 4.0 $\pm$ 0.15   | 3.1 $\pm$ 0.1   | 2.6 $\pm$ 0.1       | 1.35 $\pm$ 0.20    |
| ADSMB2-312685A | 60 -0                     | 90 $\pm$ 20%               | 8.5 $\pm$ 0.15   | 3.1 $\pm$ 0.1   | 2.6 $\pm$ 0.1       | 2.00 $\pm$ 0.20    |
| ADSMB2-312640B | 30                        | 30                         | 4.0 $\pm$ 0.15   | 3.1 $\pm$ 0.1   | 2.6 $\pm$ 0.1       | 1.35 $\pm$ 0.20    |
| ADSMB2-312685B | 60                        | 60                         | 8.5 $\pm$ 0.15   | 3.1 $\pm$ 0.1   | 2.6 $\pm$ 0.1       | 2.00 $\pm$ 0.20    |

### ELECTRICAL CHARACTERISTIC

ADSMB2-312685A & ADSMB2-312640A

ADSMB2-312685B & ADSMB2-312640B



### TAPE DIMENSIONS

| SIZE           | QUANTITY/ REEL |
|----------------|----------------|
| ADSMB2-252030  | 1,000          |
| ADSMB2-312640A | 500            |
| ADSMB2-312685A | 3,000          |
| ADSMB2-312640B | 500            |
| ADSMB2-312685B | 3,000          |