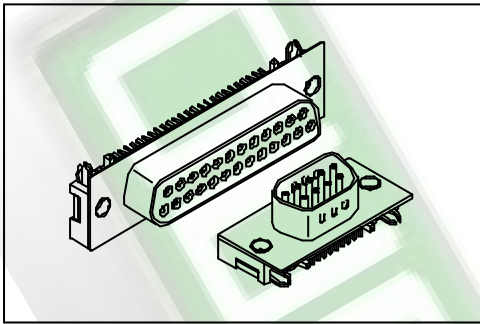


7902 & 7912 Series

Slim D-SUB Right Angle S.M.D. Type



Material:

Housing: High temperature housing UL94V-0 withstands IR and VPR soldering methods.

Contacts: Phosphor Bronze.

Plating: Selective Gold plated.

Electrical Characteristics:

Current Rating: 1 AMP.

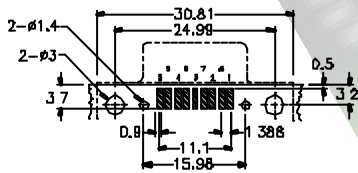
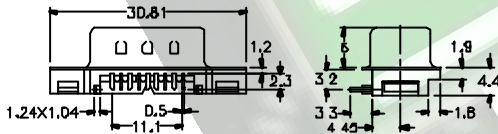
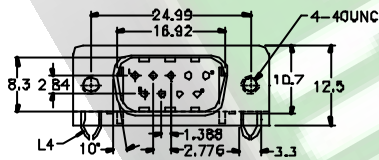
Insulator Resistance: 5000MΩmin. at DC 500V.

Contact Resistance: 20mΩmax. at DC 100mA.

Operating Temperature: -65°C ~ +125°C

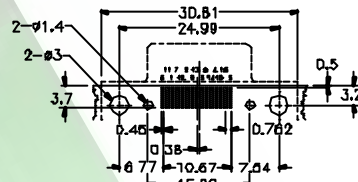
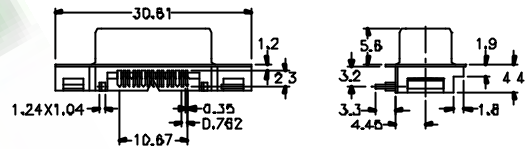
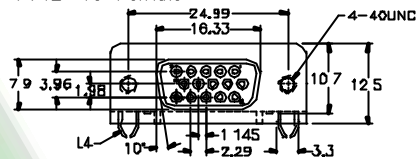
Max Processing Temperature: 230°C for 30~60 seconds.

7902-09 Male



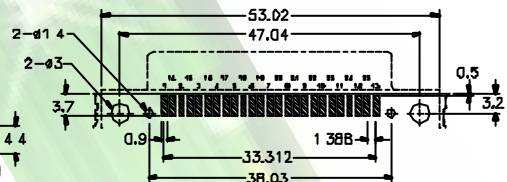
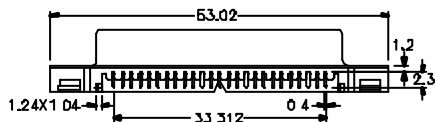
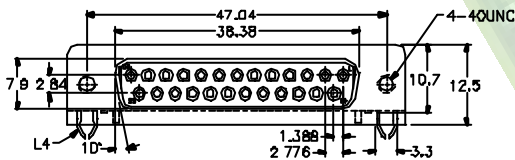
P.C. Board Layout
7902-09MCD/L4

7912-15 Female



P.C. Board Layout
7902-15FCD/L4

7902-25 Female



P.C. Board Layout
7902-25FCD/L4

Ordering information

7902- 09 M C D /L4
Series Position Male C: Selective Gold Plated D: S M D. Type Lock Type See Above

7912- 15 F
Series Position Female

7902- 25 F
Series Position Female