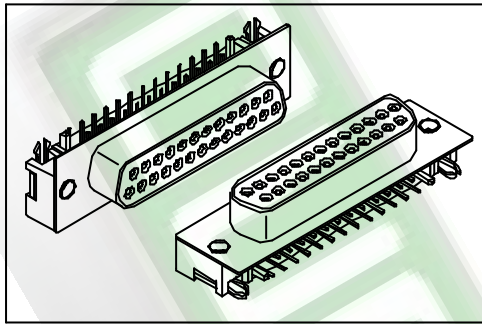


# 7902 Series

## Slim D-SUB Right Angle Type



### Material:

**Housing:** High temperature housing UL94V-0 withstands IR and VPR soldering methods.

**Contacts:** Phosphor Bronze.

**Plating:** Selective Gold plated.

### Electrical Characteristics:

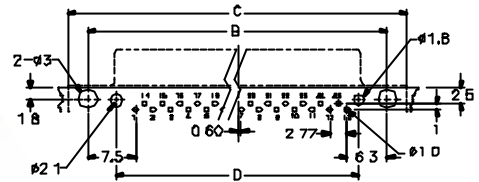
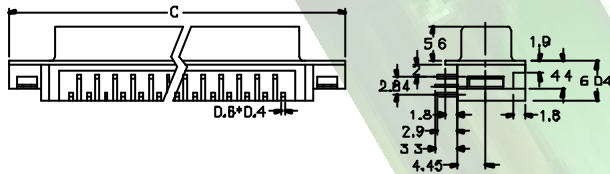
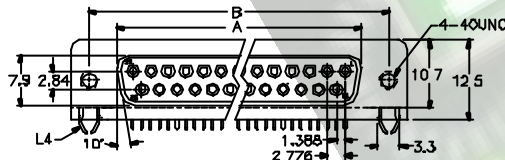
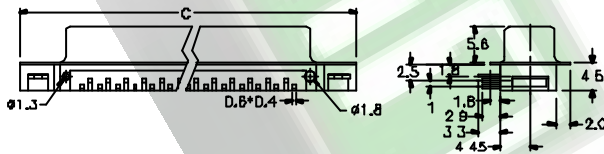
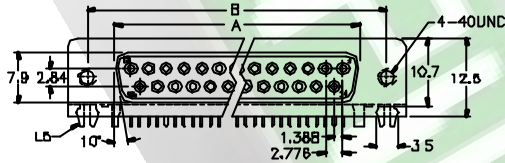
**Current Rating:** 1 AMP.

**Insulator Resistance:** 5000MΩmin. at DC 500V.

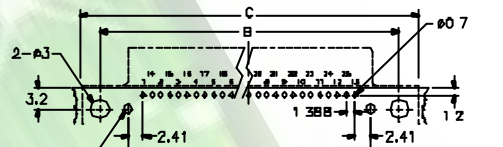
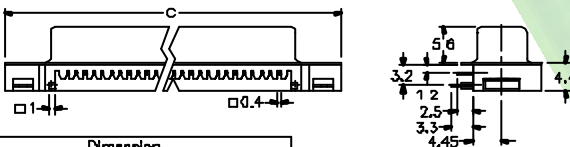
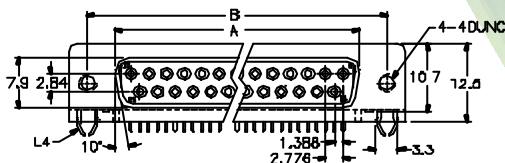
**Contact Resistance:** 20mΩmax. at DC 100mA.

**Operating Temperature:** -65°C ~ +125°C.

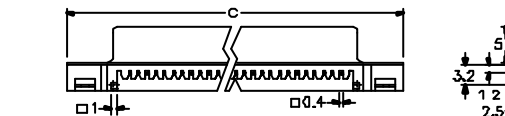
**Max Processing Temperature:** 230°C for 30~60 seconds.



Footprint 1 P.C. Board Layout  
7902-25FCR1/L5



Footprint 2 P.C. Board Layout  
7902-25FCR2/L4



Footprint 3 P.C. Board Layout  
7902-25FCR3/L4

Position	Dimension				
	A	B	C	Footprint 1	Footprint 3
15	24.80	33.32	39.20	25.89	24.24
25	38.38	47.04	53.04	39.54	38.13

## Ordering information

7902- 25 F C R 1 / L4  
 Series Position Female C. Selective Gold Plated R: Right Angle 1: Footprint 1 Lock Type See Above  
 2: Footprint 2  
 3: Footprint 3