

# S-Tylus™ series

...on the technology of NSP  
(Non-Strippable Primary Coated) Fiber

S-Tylus™ is the trademark of Showa Electric Wire & Cable Co.,Ltd.

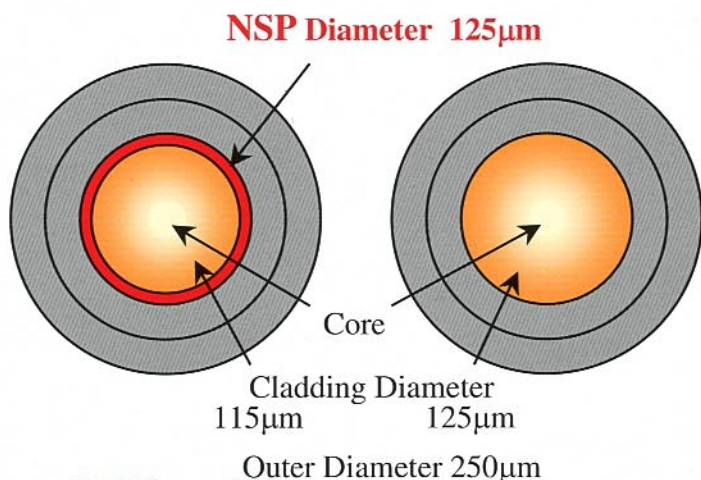
**S-Tylus™ series is a new optical fiber which was reinforced with a thin hard-polymer layer(UV-resin layer), and has higher mechanical reliability than conventional optical fibers.**

**S-Tylus™ is easy to handle at the fabrication process of optical devices.**

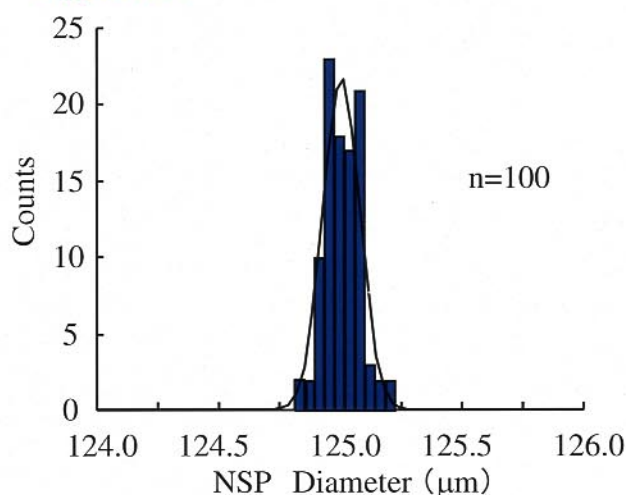
## Characteristics

- Even if a part of fiber coating was physically stripped off, the NSP layer still remains on the fiber and protects glass surface from unexpected damage.
- S-Tylus™ is hard to break under application of a bending stress.
- S-Tylus™ has the good optical matching with conventional optical fibers.
- S-Tylus™ shows the same strength stress as a fiber with diameter of 125μm

## S-Tylus™ Geometry



## S-Tylus™ Fiber Type: SM



Histogram of NSP Diameter

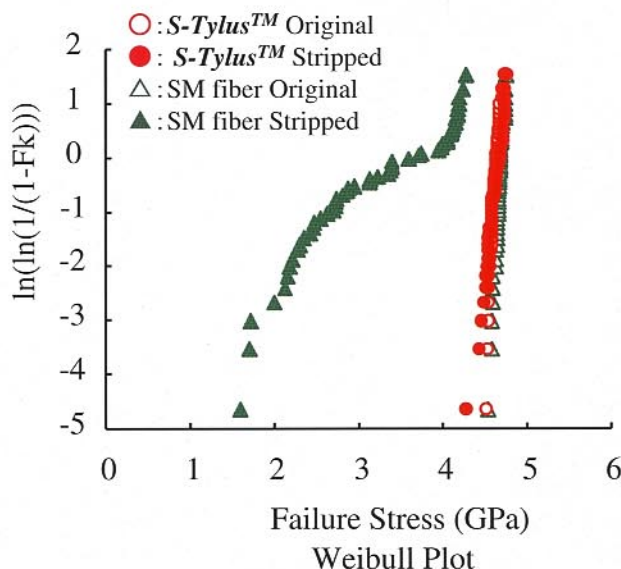
## Specification

S-Tylus™ Fiber Type:SM		
Item		Spec.
Mode Field Diameter	μm	9.3
NSP Diameter	μm	125
Core/NSP Concentricity	μm	≤0.8
NSP Non-Circularity	%	≤1.0

### ※Fiber Types

- Single Mode Fiber
- High-Δ Single Mode Fiber
- Multi-Mode Fiber  
(ex. 50/115/125, 62.5/115/125)
- 1.55μm Dispersion Shifted Fiber

## Conventional SM Fiber



\*We have developed S-Tylus™ under NTT guidance.

**SWCC SHOWA ELECTRIC WIRE & CABLE CO., LTD.**

INDUSTRIAL ELECTRIC SYSTEMS SALES DEPT.

Tokyo Toranomon Building 1-1-18, Toranomon Minato-ku Tokyo Japan, 105-8444

Tel +81-3-3597-7101 Fax +81-3-3597-7156

E-mail: opto@snt1.swcc.co.jp

URL: <http://www.swcc.co.jp/>