

Wide Band Chokes

Axial Leaded Thru Hole

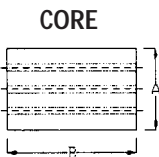
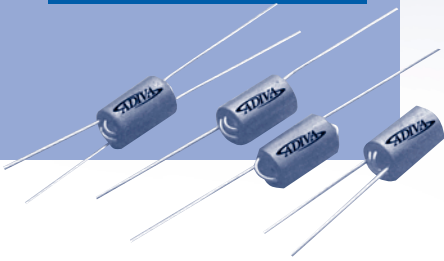
ADWBCA Series

ADWBCA

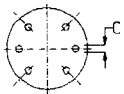
FEATURES

- Wide band choke has a higher impedance characteristic. It supplies several kinds of models for customers' requirement.
- Applications: Computer Products (Motherboards, Printers, Monitors, Power Suppliers, etc.),

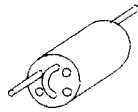
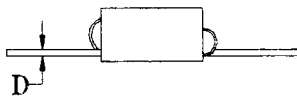
Communication Products (Telephone Switchboards, etc.), Modems, OA Products, etc., Counter measures for complying with CE, FCC VDE or VCCI radiated emissions.



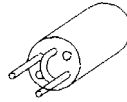
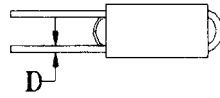
CORE



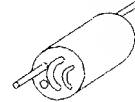
1.5TS



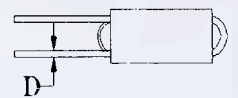
2TS



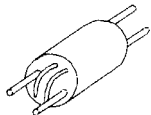
2.5TS



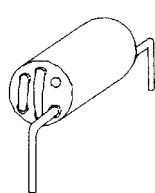
3TS



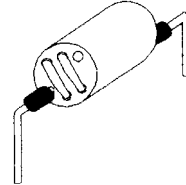
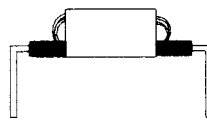
1.5TS X 2



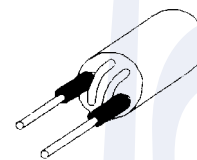
2.5TS (π)



2.5TS (π U)



3TS (U)



OTHERS AVAILABLE
CASE BY CASE

PART NUMBERING GUIDE

SERIES ADWBCA □ - MATERIAL A5 - R6H - 2.5Ts TURNS TYPE

PACKAGE TYPE

PACKAGE TYPE	Ø A (mm)	B (mm)	C (mm)	Ø D (mm)
R6H 6x10	6.0 ±0.25	10.0 ±0.30	0.9 ±0.15	0.5 ±0.05

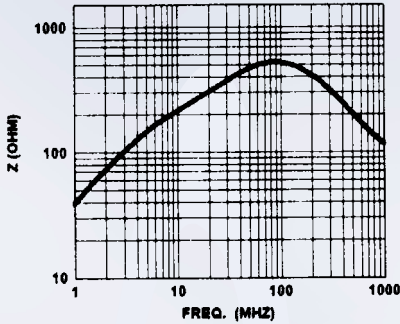
Wide Band Chokes

Axial Leaded Thru Hole

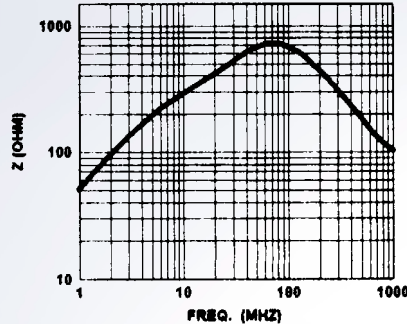
ADWBCA Series — Continued



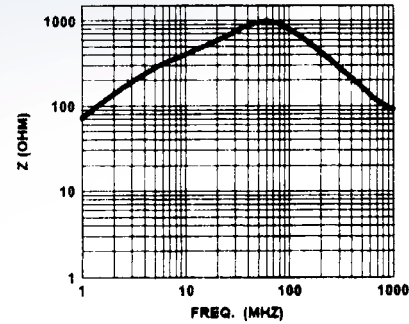
ADWBCA-A5 R6H 1.5TS



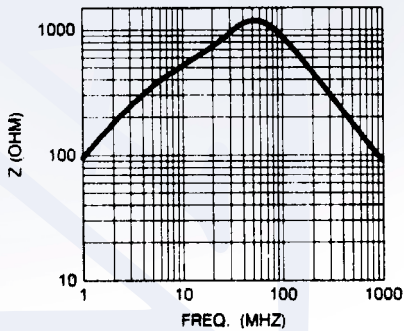
ADWBCA-A5 R6H 2TS



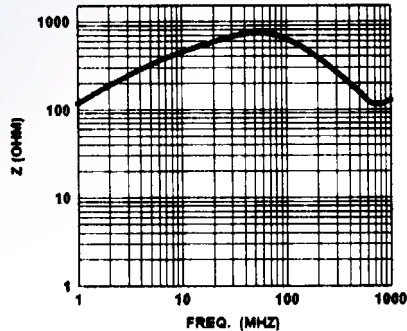
ADWBCA-A5 R6H 2.5TS



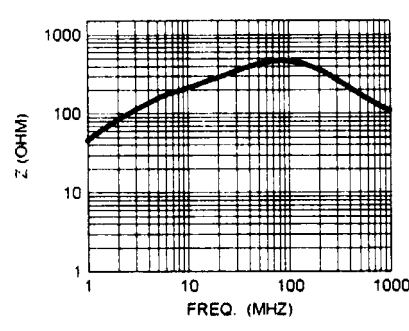
ADWBCA-A5 R6H 3TS



ADWBCA-A6 R6H 2.5TS



ADWBCA-A5 R6H 1.5TS X 2



IMPEDANCE CURVES

PACKAGE TYPE	POPULAR TYPE	TURNS Ts	TYPICAL IMPEDANCE (Ω) at 25 MHz	TYPICAL IMPEDANCE (Ω) at 100 MHz
ADWBCA-A5 R6H 1.0Ts		1.0	100	300
ADWBCA-A5 R6H 1.5Ts		1.5	300	500
ADWBCA-A5 R6H 2.0Ts		2.0	400	600
ADWBCA-A5 R6H 2.5Ts	•	2.5	600	800
ADWBCA-A6 R6H 2.5Ts		2.5	500	600
ADWBCA-A5 R6H 3.0Ts	•	3.0	800	900
ADWBCA-A6 R6H 3.0Ts	•	3.0	700	600
ADWBCA-A5 R6H 1.5Ts x 2		1.5 x 2	300	500