

# Power Inductors

Surface Mount

ADO75A Series



## ADO75A



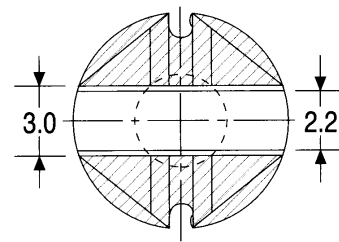
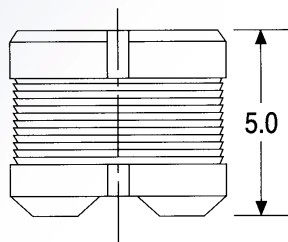
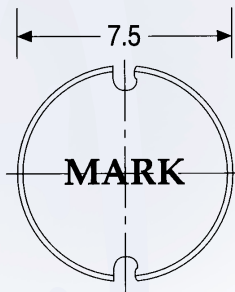
### FEATURES

- Surface mountable device.
- Low Profile.
- Excellent performance & cost effective.
- Tape & Reel for auto-placement.
- Applicable for DC-DC converter.

### BENEFITS

Frequency Range: 0.1 ~ 10 MHz  
 Inductance Range: 1.8 ~ 470  $\mu$ H  
 Tested: \* KHz and 0.05V  
 Operating Temperature Range: -40°C to +85°C  
 Inductance: measured by HP 4194A, impedance and gain phase analyzer.  
 Inductance Drop: 10% at rated current

### UNIT DIMENSION (unit: mm)



tolerance :  $\pm 0.2$

### STANDARD SPECIFICATIONS

PACKAGE TYPE	INDUCTANCE ( $\mu$ H)	FREQUENCY* (KHz)	DC RESISTANCE ( $\Omega$ ) max.	RATED CURRENT (A) max.
AD075A-182 □	1.8 $\pm 20\%$	7960	0.035	3.50
AD075A-272 □	2.7 $\pm 20\%$	7960	0.041	3.30
AD075A-472 □	4.7 $\pm 20\%$	7960	0.048	3.00
AD075A-682 □	6.8 $\pm 20\%$	7960	0.055	2.70
AD075A-822 □	8.2 $\pm 20\%$	7960	0.065	2.50
AD075A-103 □	10 $\pm 20\%$	2520	0.07	2.10
AD075A-123 □	12 $\pm 20\%$	2520	0.075	2.00
AD075A-153 □	15 $\pm 20\%$	2520	0.08	1.80
AD075A-183 □	18 $\pm 20\%$	2520	0.10	1.61
AD075A-223 □	22 $\pm 20\%$	2520	0.11	1.50
AD075A-273 □	27 $\pm 20\%$	2520	0.13	1.30
AD075A-333 □	33 $\pm 10\%$	2520	0.14	1.20
AD075A-393 □	39 $\pm 10\%$	2520	0.16	1.15
AD075A-473 □	47 $\pm 10\%$	2520	0.20	1.10
AD075A-563 □	56 $\pm 10\%$	2520	0.24	0.94
AD075A-683 □	68 $\pm 10\%$	2520	0.28	0.85
AD075A-823 □	82 $\pm 10\%$	2520	0.37	0.78
AD075A-104 □	100 $\pm 10\%$	1	0.44	0.72
AD075A-124 □	120 $\pm 10\%$	1	0.47	0.67
AD075A-154 □	150 $\pm 10\%$	1	0.64	0.58
AD075A-184 □	180 $\pm 10\%$	1	0.80	0.51
AD075A-224 □	220 $\pm 10\%$	1	0.96	0.49
AD075A-274 □	270 $\pm 10\%$	1	1.11	0.42
AD075A-334 □	330 $\pm 10\%$	1	1.26	0.40
AD075A-394 □	390 $\pm 10\%$	1	1.77	0.36
AD075A-474 □	470 $\pm 10\%$	1	1.96	0.35