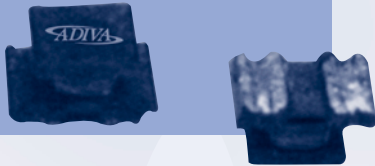
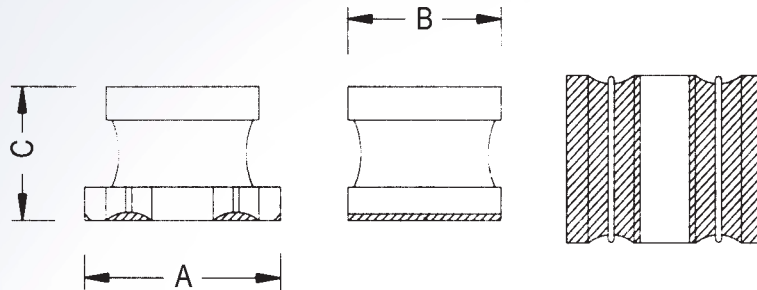


## ADO32/45



### FEATURES

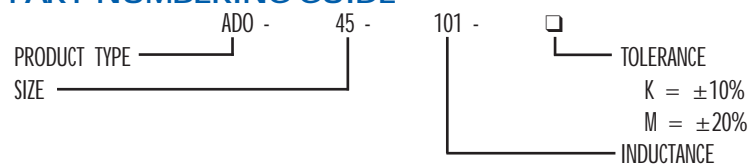
- High Q-value at high frequencies
- Low DC resistance permits high current flow
- Excellent solder heat resistance
- Both flow and reflow soldering resistance methods can be employed
- Applications: MP3 or walkman equipment, communications, and audio equipment



### STANDARD SPECIFICATIONS

PACKAGE TYPE	Dimension (mm)		
	(A)	(B)	(C)
ADO-32	3.2 ±0.30	2.5 ±0.20	2.3 MAX
ADO-45	4.7 ±0.30	3.2 ±0.20	2.9 MAX

### PART NUMBERING GUIDE



### PACKAGE DATA

SIZE	ADO32	ADO45
Quantity / Reel	1,500	500

# Power Inductors

Surface Mount

ADO32 and ADO45 — Continued

## STANDARD SPECIFICATIONS

Part CORD	Inductance (*H)	Q	Frequency Hz	ADO32		Q	Frequency Hz	ADO45	
				DCR (*)	IDC (mA)			DCR (*)	IDC (mA)
1R0	1	20	1M	0.5	445	35	1M		
1R4	1.4	20	1M	0.6	425	35	1M		
1R8	1.8	20	1M	0.6	400	35	1M		
2R2	2.2	20	1M	0.7	390	35	1M		
2R7	2.7	20	1M	0.8	370	35	1M		
3R3	3.3	20	1M	0.9	320	35	1M		
3R9	3.9	20	1M	1.1	300	35	1M		
4R7	4.7	20	1M	1.2	290	35	1M		
5R6	5.6	20	1M	1.3	270	35	1M		
6R8	6.8	20	1M	1.5	250	35	1M		
8R2	8.2	20	1M	1.6	240	35	1M		
100	10	35	796K	1.8	225	40	796K	0.56	400
120	12	35	796K	2	190	40	796K	0.62	380
150	15	35	796K	2.2	180	40	796K	0.73	360
180	18	35	796K	2.5	170	40	796K	0.82	340
220	22	35	796K	2.8	165	40	796K	0.94	320
270	27	35	796K	3.1	150	40	796K	1.1	300
330	33	40	796K	3.5	125	40	796K	1.2	270
390	39	40	796K	3.9	115	40	796K	1.4	240
470	47	40	796K	4.3	110	40	796K	1.5	220
560	56	40	796K	4.9	100	40	796K	1.7	200
680	68	40	796K	5.1	85	40	796K	1.9	180
820	82	40	796K	6.2	80	40	796K	2.2	170
101	100	40	796K	7	80	40	796K	2.5	160
121	120	40	796K	8	80	40	796K	3	150
151	150	40	796K	9.3	75	40	796K	3.7	130
181	180	40	796K	10.2	70	40	796K	4.5	120
221	220	40	796K	11.8	65	40	796K	5.4	110
271	270	40	796K	12.5	65	40	796K	6.8	100
331	330	40	796K	13	65	40	796K	8.2	95
391	390					40	796K	9.7	90
471	470					40	796K	11.8	80
561	560					40	796K	14.5	70
681	680					40	796K	17	65
821	820					40	796K	20.5	60
102	1000					40	252K	25	50
122	1200					40	252K	30	45

DCR & IDC is all MAX. value. Tolerance: K±20% K is standard.

Note: Testing inductance at 1MHz, but ADO45-471 to ADO45-1222 are 1K Hz.

Other specifications are available.

XTAL

OSC

VCXO  
VCO

TCXO  
VCTCXO

FLTR

RES

IND

INDUCTORS

