

Voltage Controlled Clock OSC.

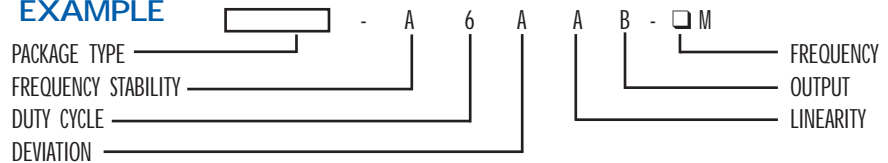
Surface Mount & Thru Hole

ADVCXO Series



Package Type	ADVCXO G4 SMD	pg31	ADVCXO I SMD	pg32
	ADVCXO G6 SMD	pg31	ADVCXO H Thru Hole	pg33
Frequency Stability	±100 ppm	A	±25 ppm	D
	±50 ppm	B	Custom	E
	±30 ppm	C		
Duty Cycle	45/55%	5	40/60%	6
Deviation	±100 ppm min	A	±50 ppm min	C
	±75ppm min	B	±200 ppm min	D
Linearity	20%	A	10%	C
	15%	B	None	Blank
Output	TTL	A	CMOS Compatible	C
	CMOS	B		

EXAMPLE



Voltage Controlled Clock OSC.

Surface Mount

ADVCXO Series (ADVCXOI)



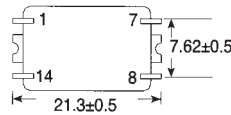
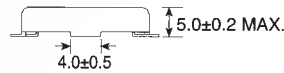
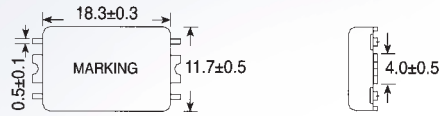
ADVCXOI

FEATURES

- Frequency adjustable
- Superior quality
- Low power consumption
- Application: Data communications, Set top box, ADSL modem.

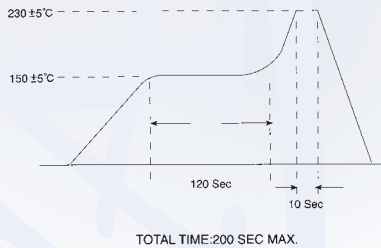


UNIT DIMENSION (unit: mm)

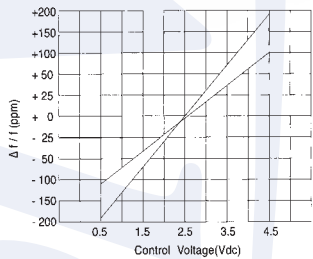


- Pin Connections
 Pin 1: Control Voltage
 Pin 7: Common and Case
 Pin 8: Output
 Pin 14: +Vcc

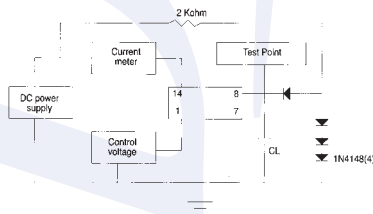
SOLDERING REFLOW PROFILE



FREQUENCY/MODULATION VOLTAGE CHARACTERISTICS



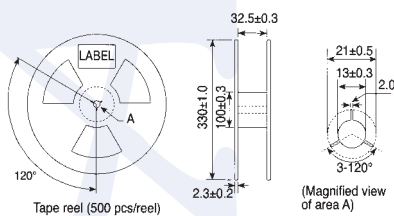
TEST CIRCUIT



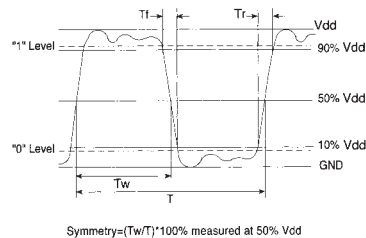
STANDARD SPECIFICATIONS

Package Type	ADVCXOI	
Standard Frequency	8.192, 10.24, 16.384, 27, 35.328 MHz	
Frequency Range	8.000 ~ 52.000 MHz	
Frequency Stability vs. Temperature Range	±50 ppm (0°C ~ 50°C) ±50 ppm (0°C ~ 70°C)	±30 ppm (-20°C ~ 60°C) Custom
Frequency Control Voltage	2.5 ±2.0 Vdc	
Frequency Control Range	±100 ppm min.	
Output Load	2 TTL or CMOS	
Output Symmetry (Tw/T)	40% ~ 60%	
Supply Voltage	5.0 ±0.25 Vdc	
Aging	±5 ppm/year	

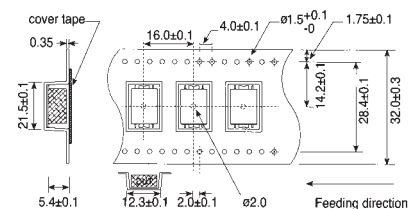
REEL PACKING (UNIT: mm)



OUTPUT WAVEFORM FOR CMOS



TAPE SPECIFICATIONS



SEE PAGE 30 FOR PART NUMBERING GUIDE