

Wound Chip Beads

Surface Mount

ADSMB2 Series



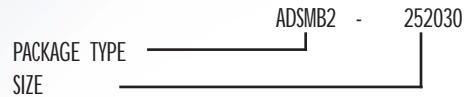
ADSMB2



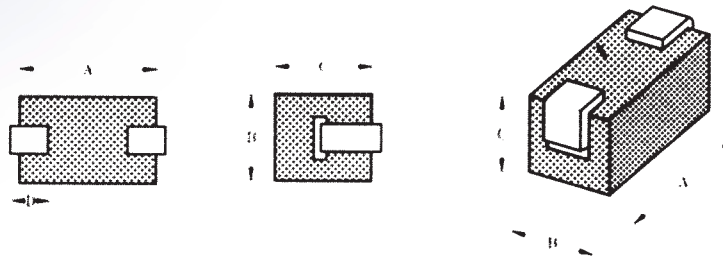
FEATURES

- High resistance to heat and humidity
- Accurate dimensions for automatically mounted
- Applications: cellular phones, telecommunications systems, wireless communications equipment, and computer products

PART NUMBERING GUIDE



Rectangular Ferrite Bead



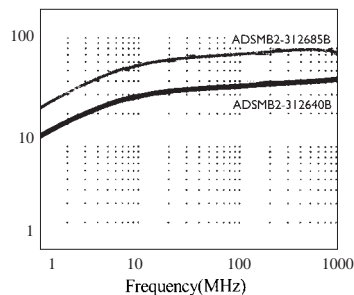
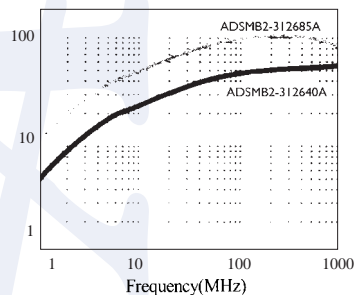
STANDARD SPECIFICATIONS

PACKAGE TYPE	IMPEDANCE	IMPEDANCE	SIZE			
	(Ω) at 25 MHz	(Ω) at 100 MHz	LENGTH (A) mm	WIDTH (B) mm	THICKNESS (C) mm	TERMINAL (D) mm
ADSMB2-252030	20 \pm 20%	30 \pm 20%	3.0 \pm 0.15	2.5 \pm 0.1	2.0 \pm 0.1	1.15 \pm 0.15
ADSMB2-312640A	30 -0	47 \pm 20%	4.0 \pm 0.15	3.1 \pm 0.1	2.6 \pm 0.1	1.35 \pm 0.20
ADSMB2-312685A	60 -0	90 \pm 20%	8.5 \pm 0.15	3.1 \pm 0.1	2.6 \pm 0.1	2.00 \pm 0.20
ADSMB2-312640B	30	30	4.0 \pm 0.15	3.1 \pm 0.1	2.6 \pm 0.1	1.35 \pm 0.20
ADSMB2-312685B	60	60	8.5 \pm 0.15	3.1 \pm 0.1	2.6 \pm 0.1	2.00 \pm 0.20

ELECTRICAL CHARACTERISTIC

ADSMB2-312685A & ADSMB2-312640A

ADSMB2-312685B & ADSMB2-312640B



TAPE DIMENSIONS

SIZE	QUANTITY/ REEL
ADSMB2-252030	1,000
ADSMB2-312640A	500
ADSMB2-312685A	3,000
ADSMB2-312640B	500
ADSMB2-312685B	3,000