

Power Wirewound Resistors,
vertical, circuit breaker, fibre glass core, ceramic case



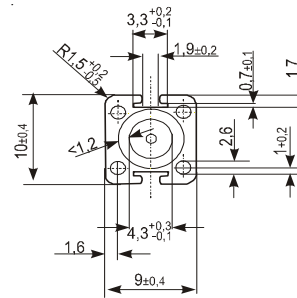
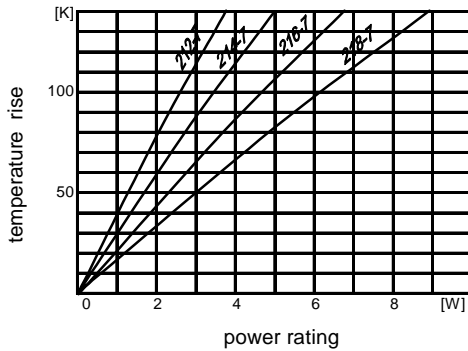
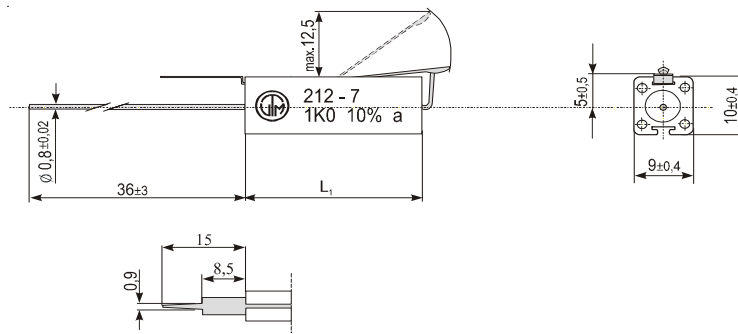
Specifications

Type		KT212-7	KT214-7	KT216-7	KT218-7
Power rating P_{70}	W	2	2,5	3,5	4,5
Resistance range	Ω	see below			
E-Series		E 24 (5%), E 12 (10%)			
Tolerances	%	$\pm 5, \pm 10$			
Temperature coefficient	$10^{-6} \cdot K^{-1}$	- 80 ... + 500			
max. cont. work. voltage	V_{RMS}	$\sqrt{P_{70} \cdot R}$			
Insulation voltage (1min.)	V_{RMS}	2000			
Insulation resistance	Ω	$> 10^4 M$			
Derating linear	$^{\circ}C$	see diagram next page			
Climatic category		55/150/56			
Temperature range	$^{\circ}C$	- 55 ... 150			
Failure rate (Total, ϑ_o , max., 60% conf. lev.)	$10^{-9} \cdot h^{-1}$	appr. 100, depends on value			
Endurance (P_{70} , 70 $^{\circ}C$, 1000h)	$\left[\frac{AR}{R}\right] \%$	$\pm 3,0$ average			
Damp heat, steady state (40 $^{\circ}C$, 93% r.h., 56d)	$\left[\frac{AR}{R}\right] \%$	$\pm 2,0$			
Climatic sequence	$\left[\frac{AR}{R}\right] \%$	$\pm 2,0$			
Terminal strength	$\left[\frac{AR}{R}\right] \%$	$\pm 1,0$			
Terminal tensile strength	N	50			
Resistance to soldering heat (260 $^{\circ}C$, 10s)	$\left[\frac{AR}{R}\right] \%$	$\pm 0,2$ typ.			
Solderability	s	2,5 Flowtime; solderglobule test IEC 60068-2-20-T			
Marking		Printed in clear			

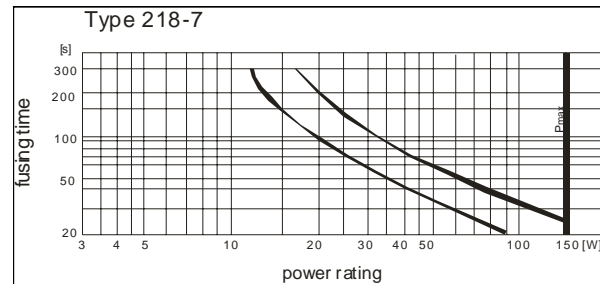
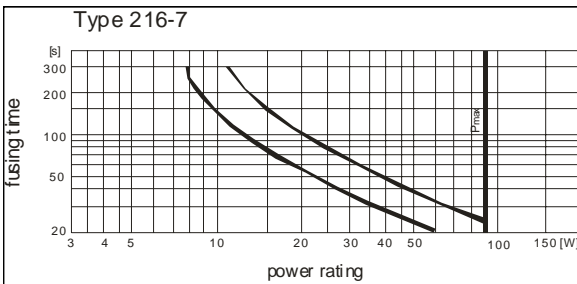
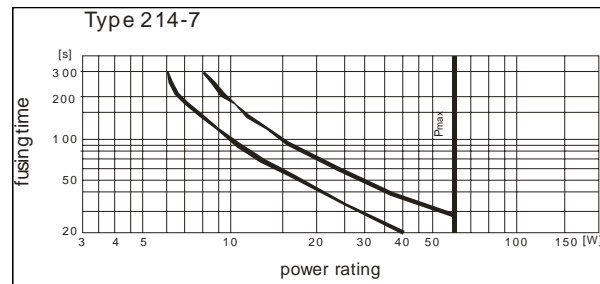
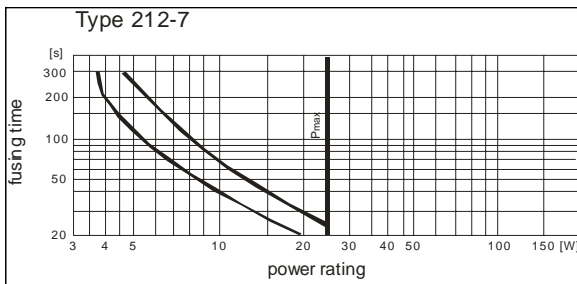
Type	Resistance range			L_1
	10%	5%	Max	
KT212-7	0R075	0R15	15K	25 $\pm 1,0$
KT214-7	0R11	0R33	33K	38 $\pm 1,0$
KT216-7	0R15	0R51	47K	50 $\pm 1,0$
KT218-7	0R27	0R91	82K	75 $\pm 1,0$

Revision 200807

Dimensions in mm



Fusing times vs. load:



Packaging:

Type	Packaging	Pieces	Pack.-Code
KT212-7	bulk	200	B
KT214-7	bulk	200	B
KT216-7	bulk	200	B
KT218-7	bulk	100	B

Ordering example:

KT212-7 5 B 1K5
 Type Tolerance Pack.-Code R-Value